

Repairing Parts of Images

Sometimes there are small blemishes in parts of a photograph or image that you wish to repair, or you may wish to remove a small section of a photograph or image. The CLONE STAMP and HEALING BRUSH TOOLS can be used to achieve this.

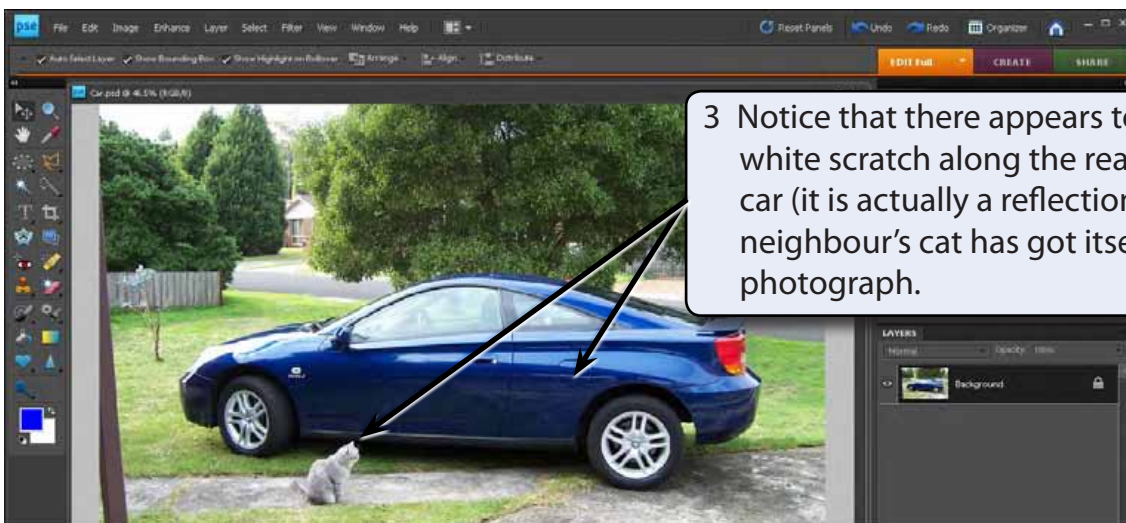
The Clone Stamp Tool

Cloning is the process of copying one part of an image onto another. For example, you might want to cover a freckle or bruise from a photograph of a person. To illustrate this we will repair a photograph of a car that a person wants to sell on the internet. The CLONE STAMP TOOL will be used to repair the photo.

A Loading the Image

- 1 Load Photoshop Elements in EDIT MODE or close the current file, then display the FILE menu and select OPEN.
- 2 Access the PSE8 SUPPORT FILES, open the CHAPTER 12 folder and open the file:

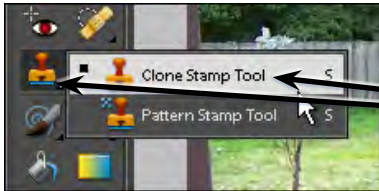
CAR



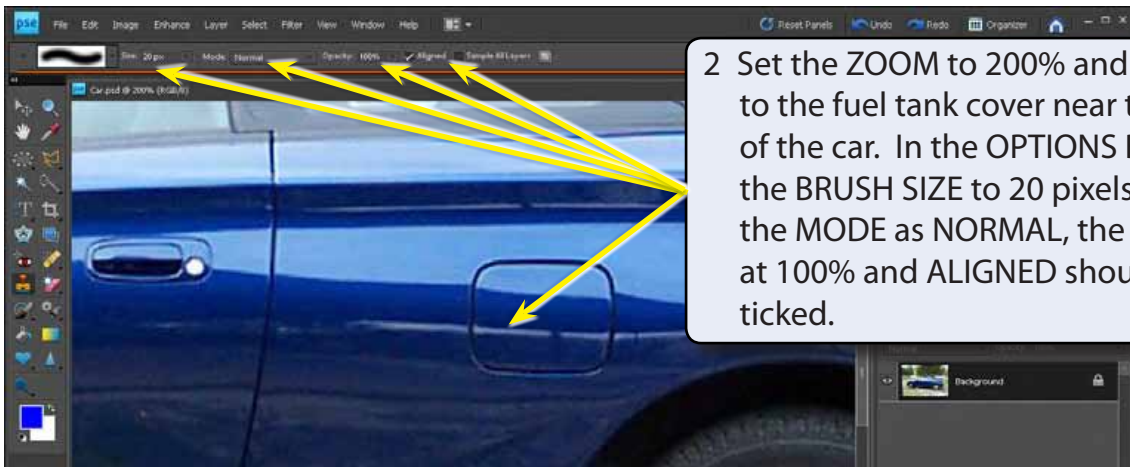
- 4 Let's remove both the white mark and the cat.

B The Clone Stamp Settings

The CLONE STAMP TOOL is used to copy from one part of the image and paint over the part that you want removed. There are a number of settings that can be applied to the CLONE STAMP TOOL to make the cloning process more efficient.



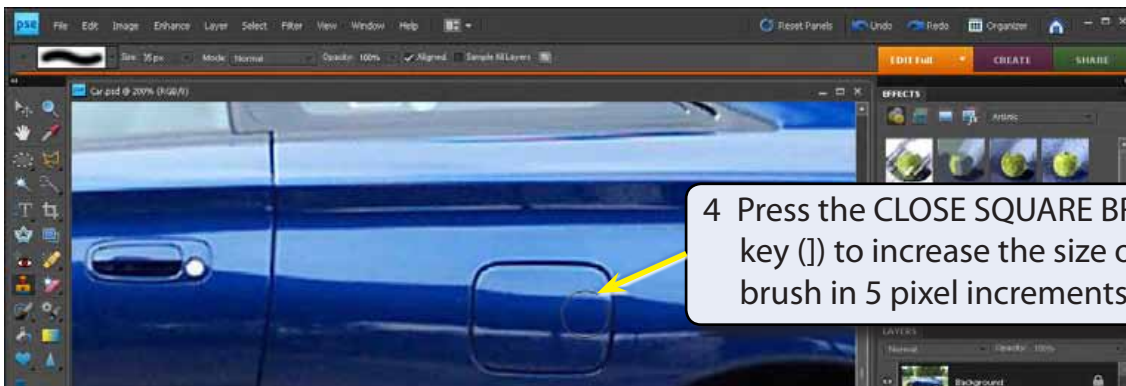
1 Select the CLONE STAMP TOOL from the TOOLS panel (it is near the ERASER TOOL).



2 Set the ZOOM to 200% and scroll to the fuel tank cover near the rear of the car. In the OPTIONS BAR set the BRUSH SIZE to 20 pixels, leave the MODE as NORMAL, the OPACITY at 100% and ALIGNED should be ticked.

NOTE: Some people prefer to clone with **OPACITY (or colour strength)** set to 50% and build the clone up gradually. We will use 100% here, but you might like to experiment with 50% once you are familiar with the cloning process.

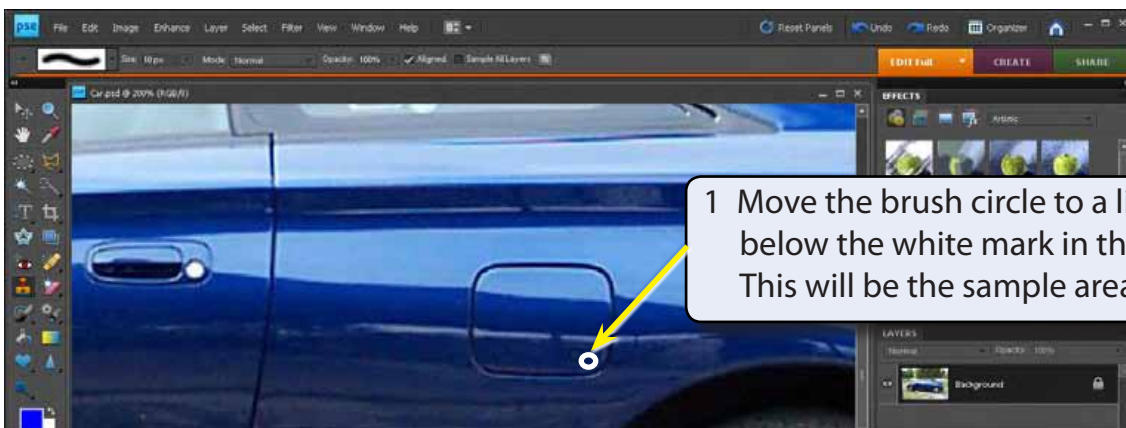
3 You can increase or decrease the BRUSH SIZE using keyboard shortcuts.



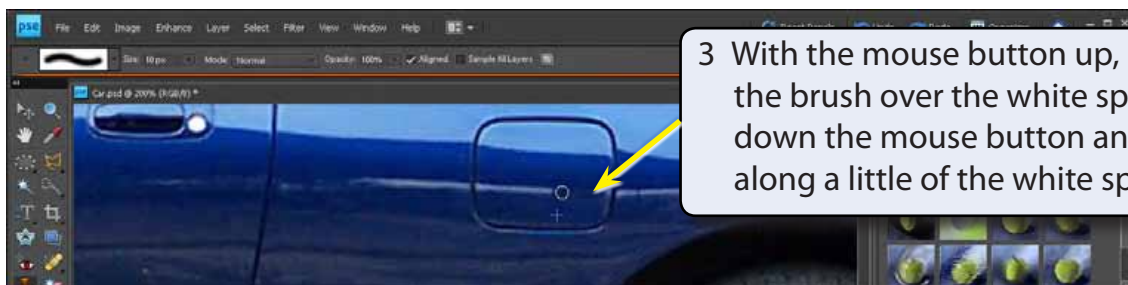
- 5 Press the OPEN SQUARE BRACKET key ([) several times to decrease the size of the brush to 10 pixels.

C Cloning

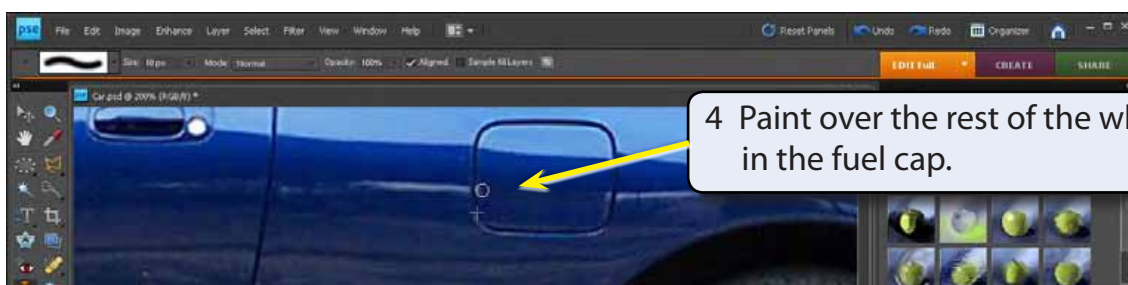
The cloning process involves selecting an area of an image that looks close to what the faulty area should look like, ALT or OPTION clicking to select the area, then painting over the problem area.



- 2 Hold down the ALT or OPTION key and click the mouse button to copy the sample area.



- NOTE:**
- i Notice that you have a circle brush shape and a cross-hair. The circle is the paint brush and the cross-hair is the sample area being copied.
 - ii As you paint along or up the problem area, the sampled area moves as well. This is what is meant by **ALIGNED**. If you wanted the sample area to remain from the original horizontal plane you would deselect **ALIGNED** in the **OPTIONS BAR**.
 - iii The **CLONED STAMP** tool was not designed to have lots of mouse clicks associated with it. The effect will not be realistic if you do this. You need to **ALT** or **OPTION** click once on an area then paint over the faulty part.



NOTE: If the cloning doesn't look right, use **UNDO** to remove the cloning and try again.