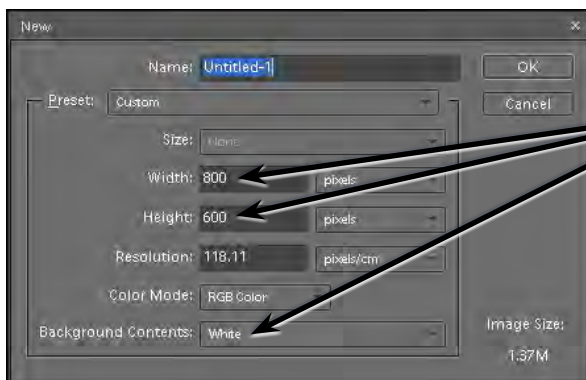


Combining Shapes

You can add or subtract one shape to or from another. This can help in the adding of drawings to photos and in the creation of designs.

Starting a New Document

- 1 Load Photoshop Elements in EDIT MODE or close the current files.
- 2 Display the FILE menu, highlight NEW and select BLANK FILE.



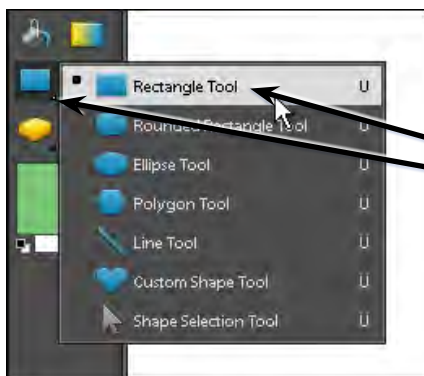
- 3 Set the WIDTH to 800 pixels, the HEIGHT to 600 pixels and the BACKGROUND CONTENTS to WHITE.

- 4 Select OK to start the new document.

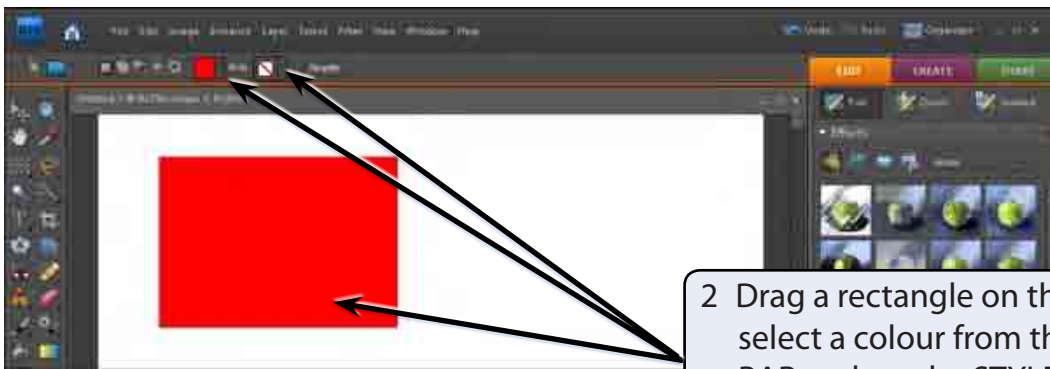
Creating a Combined Shape

A shape will be created that combines a number shapes.

A Drawing a Rectangle



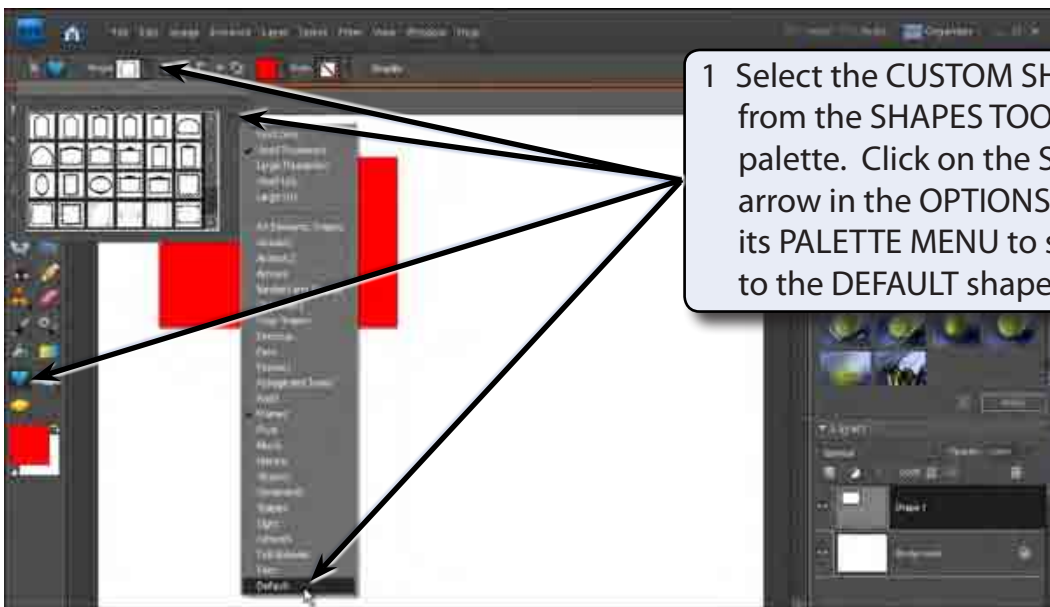
- 1 Click and hold the mouse button on the SHAPES TOOL in the TOOLS palette and select the RECTANGLE TOOL from the pop-up list of tools.



2 Drag a rectangle on the screen, select a colour from the OPTIONS BAR and set the STYLE box to REMOVE STYLE.

B Cutting a Shape Out of the Rectangle

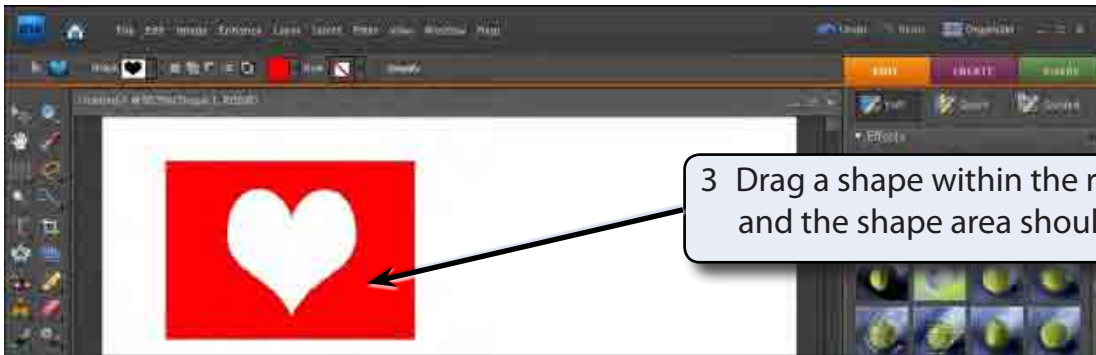
A custom shape can be cut from the rectangle.



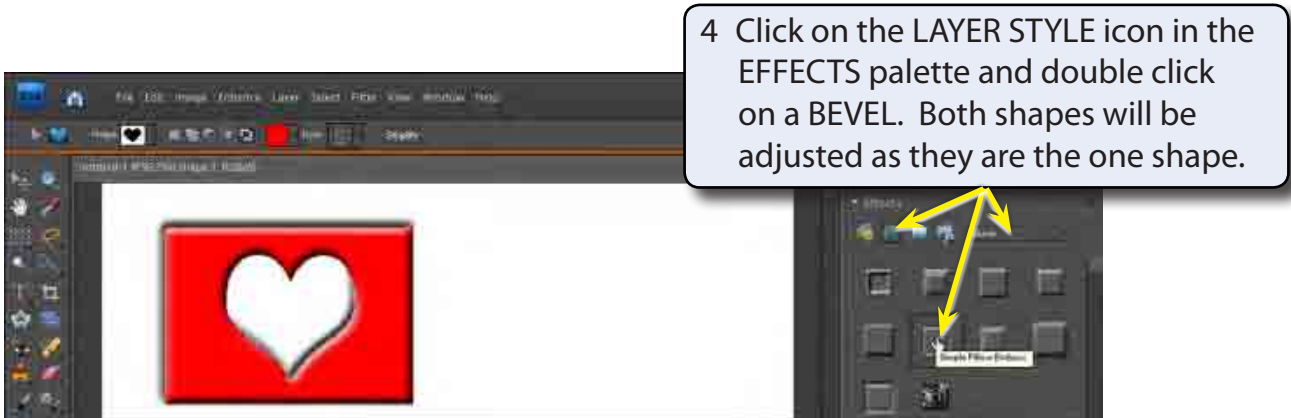
1 Select the CUSTOM SHAPE TOOL from the SHAPES TOOL in the TOOLS palette. Click on the SHAPE box arrow in the OPTIONS BAR and use its PALETTE MENU to set the shapes to the DEFAULT shapes.



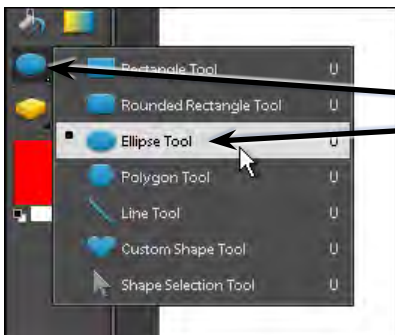
2 In the OPTIONS BAR select a shape and click on the EXCLUDE OVERLAPPING SHAPE AREAS button.



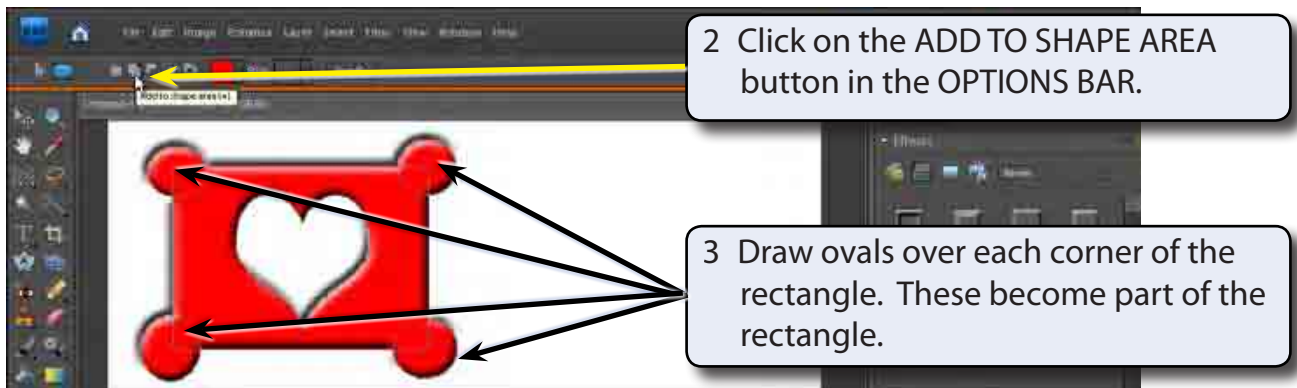
NOTE: The custom shape is white as that is the background colour and the shape has cut a hole in the rectangle. So you are seeing the background through the shape.



C Adding Shapes to Shapes



1 Select the ELLIPSE TOOL from the SHAPES TOOL in the TOOLS palette.



NOTE:

- i The ADD TO SHAPE AREA option causes the new shape to be combined with the previous shape.
- ii If you make a mistake when adding the ovals, press CTRL+Z to undo the step and try again.

D Subtracting From the Shape

