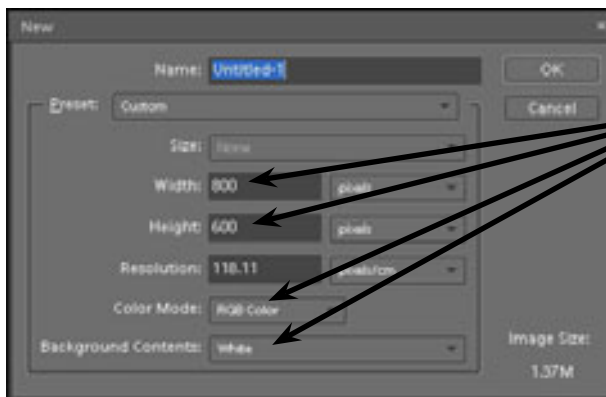


# Adding Text to Designs

Text can be added to photographs and manipulated. There are text effects available to curve letters, display them vertically and applying similar effects to those you added to shapes in the last chapter.

## Starting a New Document

- 1 Load Photoshop Elements or close the current file.
- 2 Display the FILE menu, highlight NEW and select BLANK FILE.

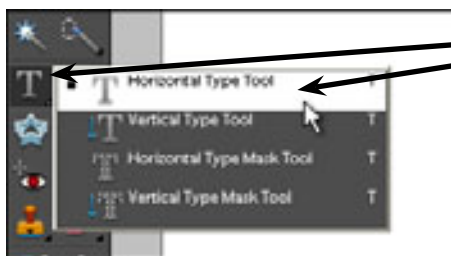


- 3 Set the WIDTH to 800 pixels, the HEIGHT to 600 pixels, the COLOUR MODE to RGB COLOUR and the BACKGROUND CONTENTS to WHITE.

- 4 Select OK to start the page.

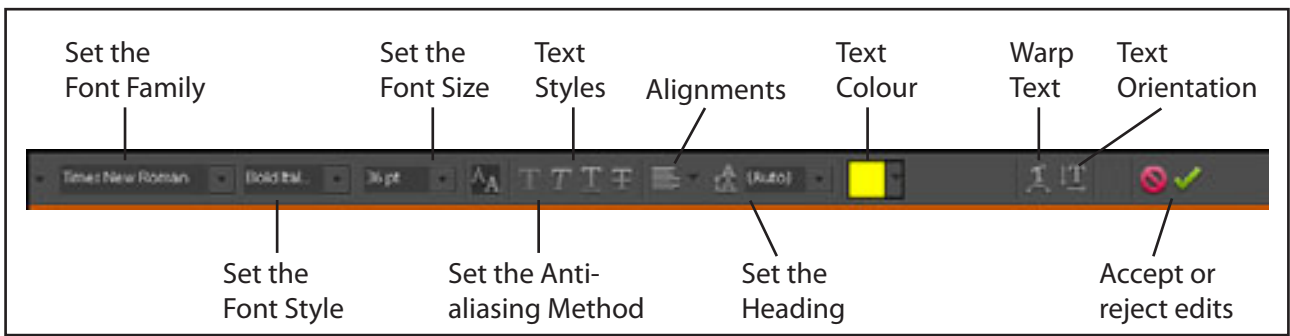
## Entering Text

The TEXT TOOLS are housed in the TYPE icon in the TOOLS palette.

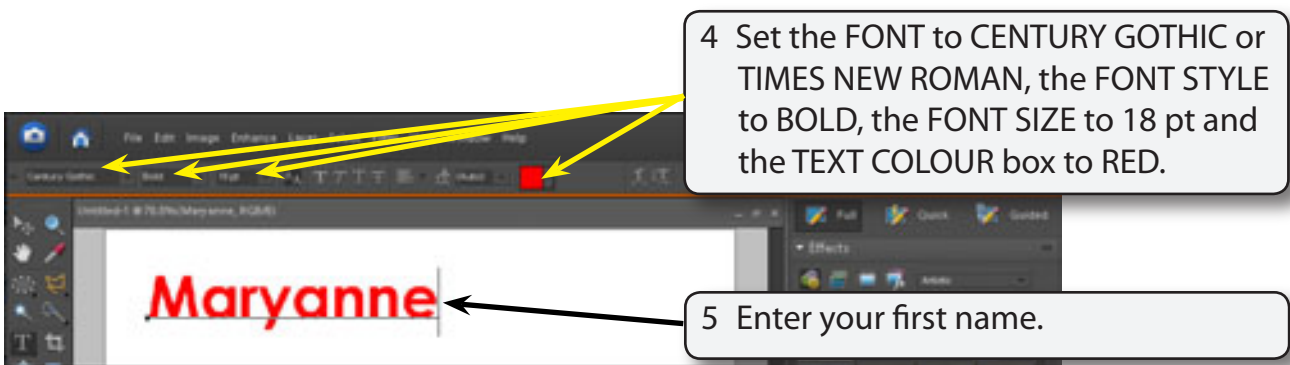


- 1 Click and hold down the mouse button on the TYPE TOOL and select the HORIZONTAL TYPE TOOL.

- 2 The OPTIONS BAR should display the text options which are labelled in the diagram at the top of the next page.



3 Click the cursor (which is now an I-Beam) near the top centre of the canvas.

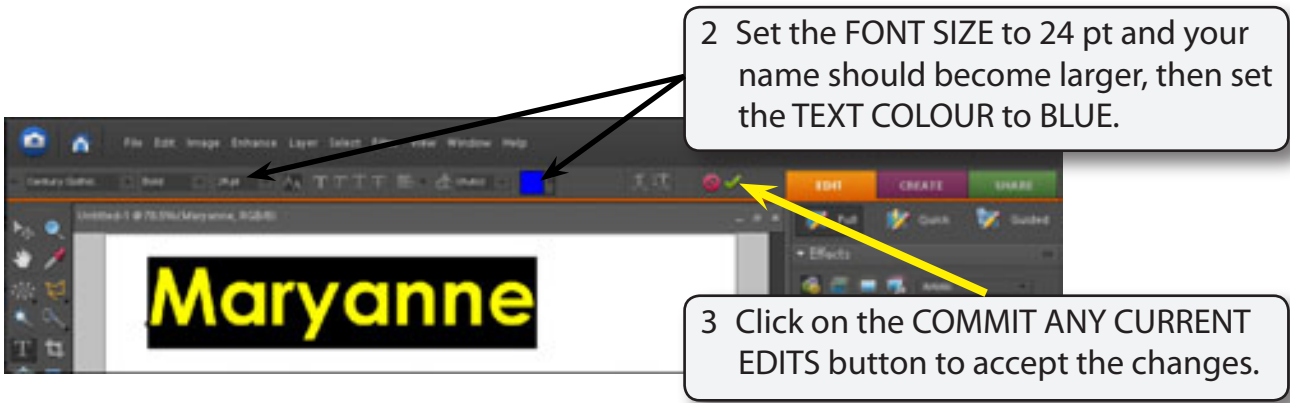


**NOTE:** A text layer is created when you click the I-Beam on the canvas.

## Altering Text

You can alter text once it has been entered.

1 Highlight your name by dragging the I-Beam across the letters or by double clicking on the letters.

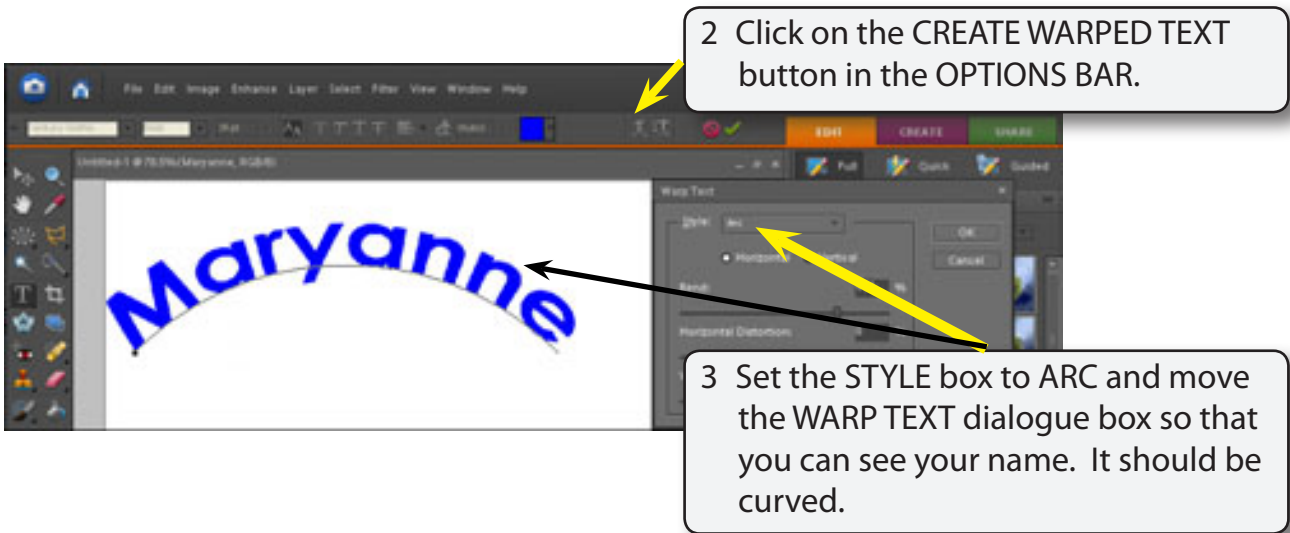


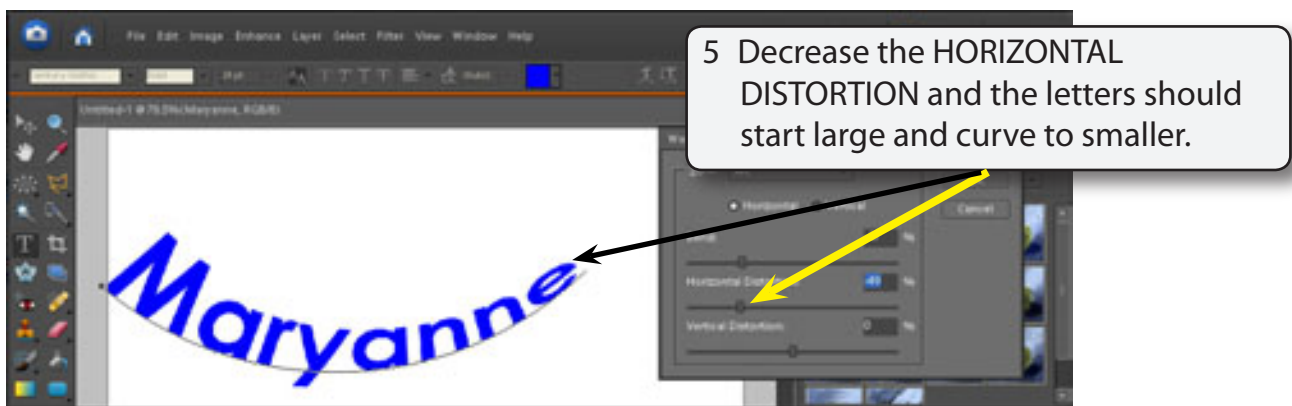
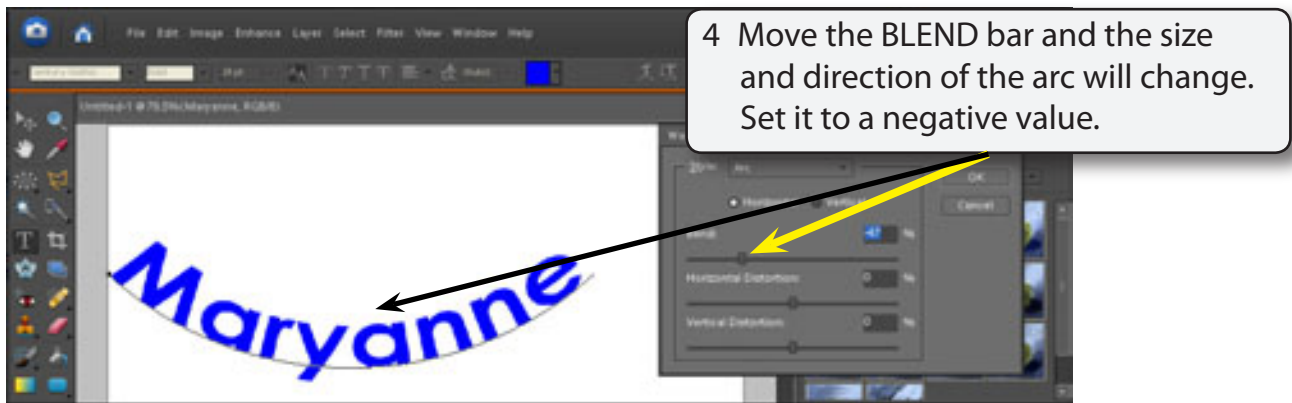
## Warping Text

There are a number of special curved effects that can be applied to the text. These are found in the WARP TEXT button in the OPTIONS BAR.

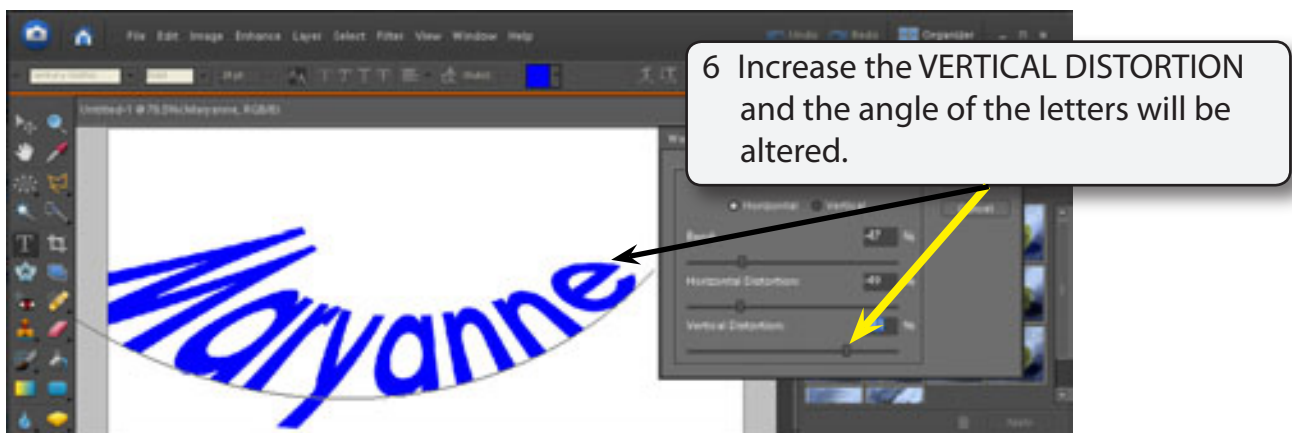
### A Single Arced Text

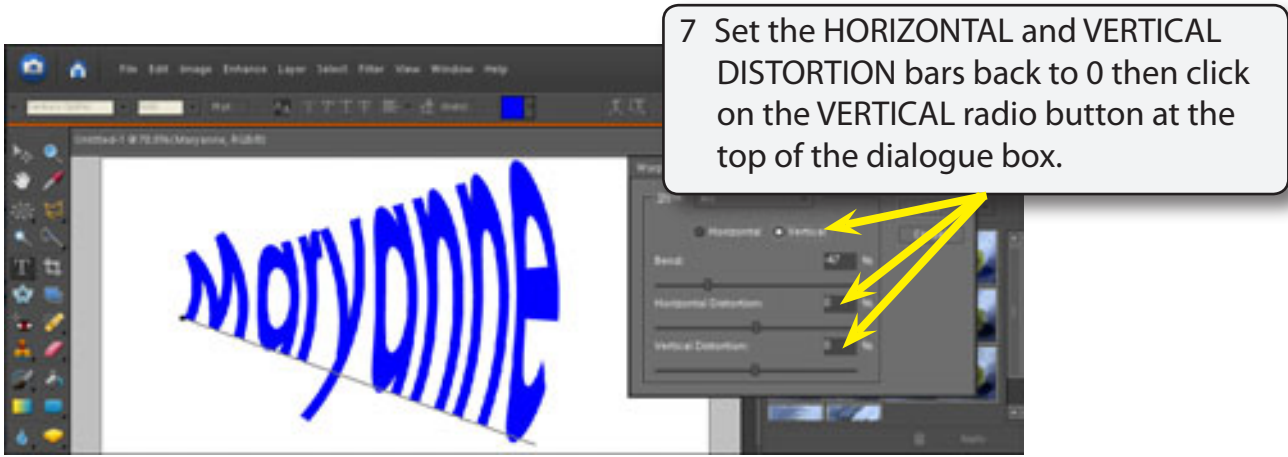
- 1 Click the I-Beam anywhere in your name.





**NOTE:** The reverse occurs if you increase the HORIZONTAL DISTORTION.





**NOTE:** The VERTICAL option gives text the illusion of the text moving out of the screen.

