

Adding Movie Clips to Slides

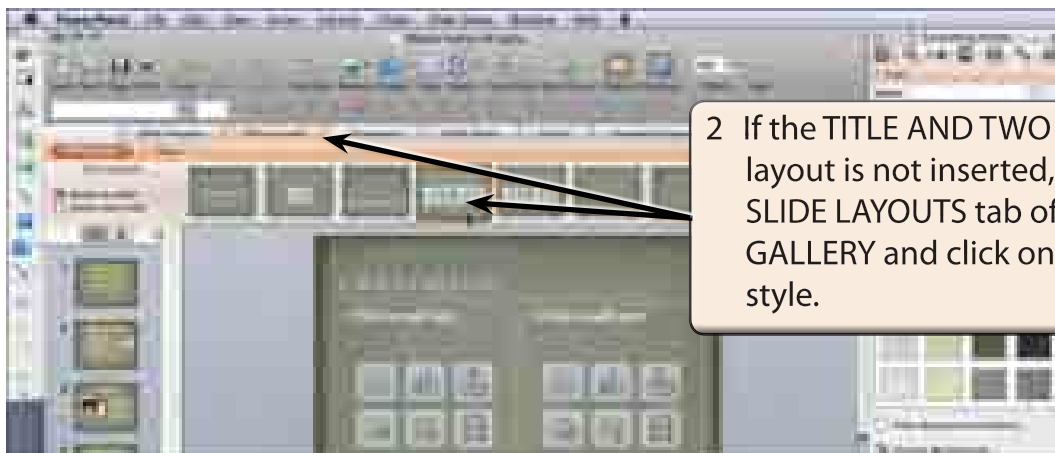
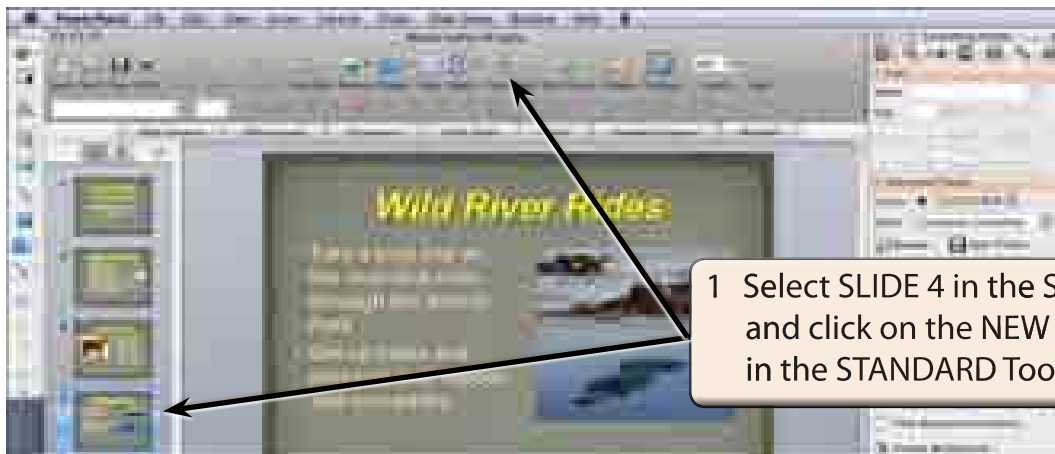
Movie clips can be included in slides and set to play when the slide is viewed or when the mouse is clicked on the clip.

Loading the Presentation

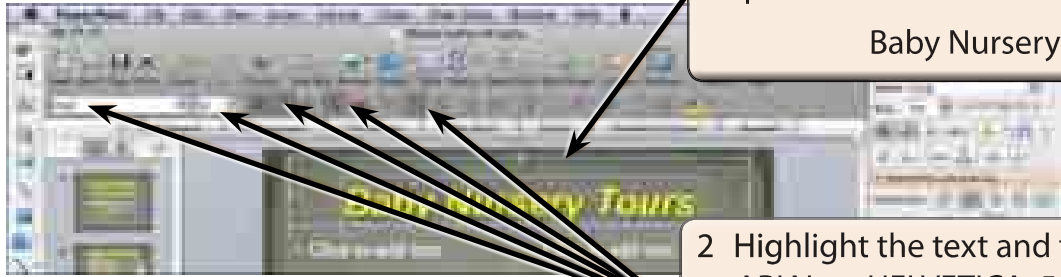
- 1 Load Microsoft PowerPoint or close the current presentation.
- 2 Display the FILE menu and select OPEN.
- 3 Access your STORAGE folder and open the WATTLE VALLEY AP file.

Creating a New Slide

A Selecting the Layout



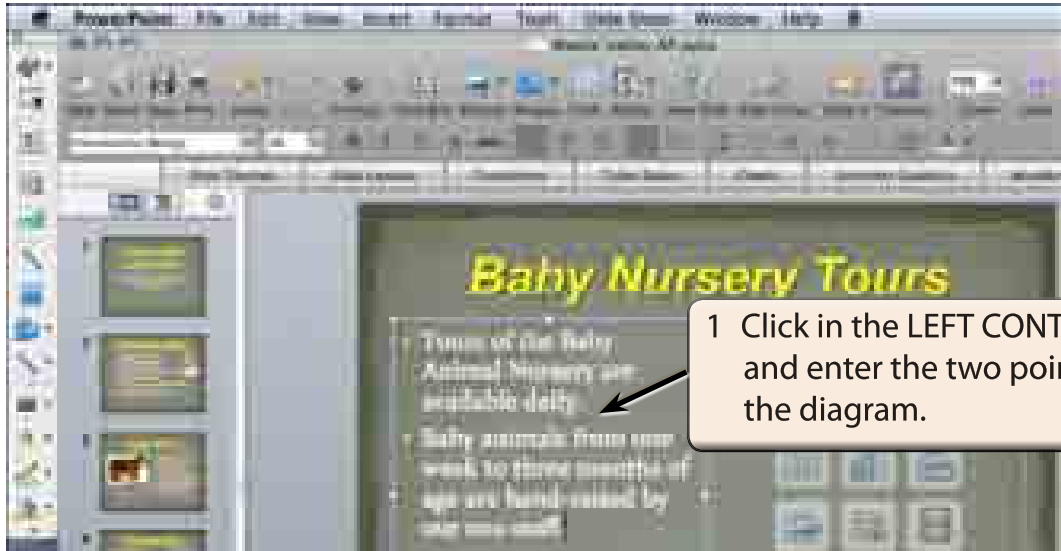
B Entering the Slide Title



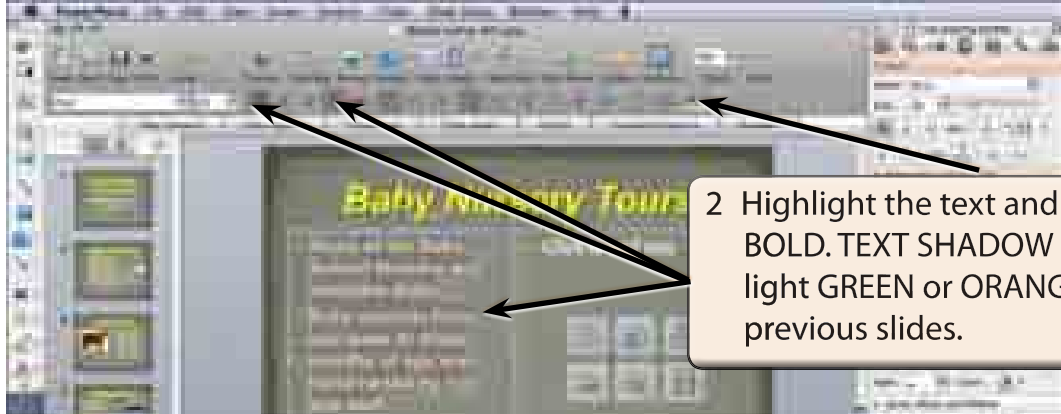
1 Click in the CLICK TO ADD TITLE placeholder and enter the title:
Baby Nursery Tours

2 Highlight the text and format it to ARIAL or HELVETICA, 54 point, BOLD, ITALIC, TEXT SHADOW, YELLOW and CENTRED.

C Adding the Text



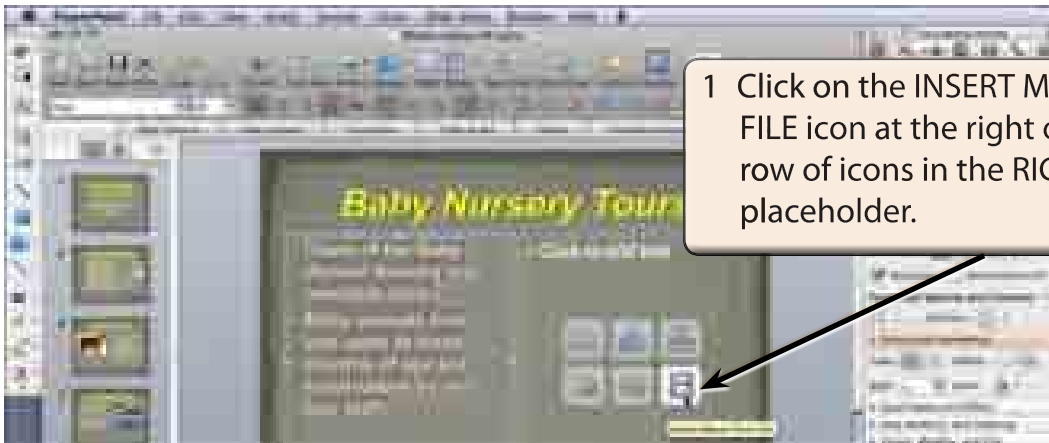
1 Click in the LEFT CONTENT frame and enter the two points shown in the diagram.



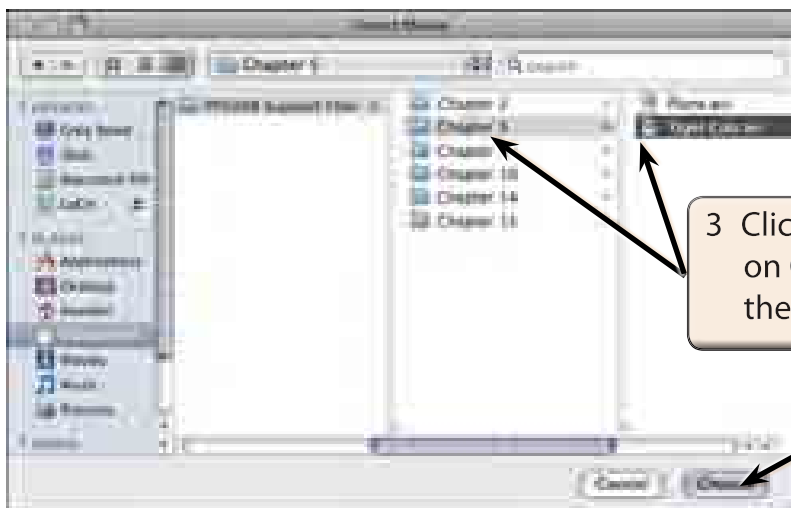
2 Highlight the text and set it to BOLD, TEXT SHADOW and the same light GREEN or ORANGE as the previous slides.

D Inserting the Movie Clip

A sample movie clip will be imported. However, your school may have better movie clips for you to use.



2 Access the PP2008 SUPPORT FILES and open the CHAPTER 5 folder.



NOTE: You may prefer to use a movie clip from your school's movie clips library.