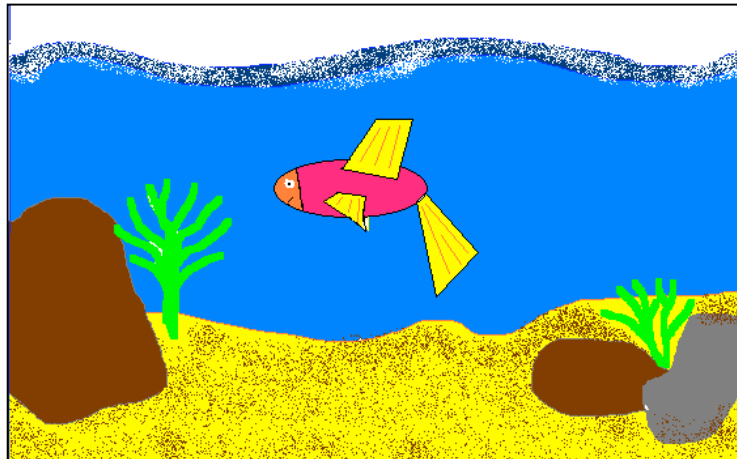


Making a More Detailed Sketch

Use the steps in this exercise to create a sketch of a fish swimming next to a rock as shown below. Once the sketch is complete, save it and print a copy of it in colour if a colour cartridge is available.



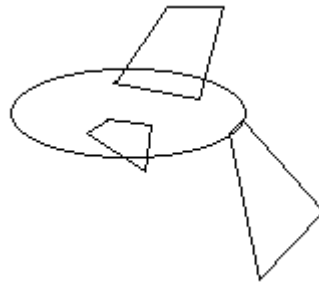
- 1 Use the ELLIPSE tool to draw an ORANGE oval shape filled with WHITE near the centre of the screen. This is the fish's body.



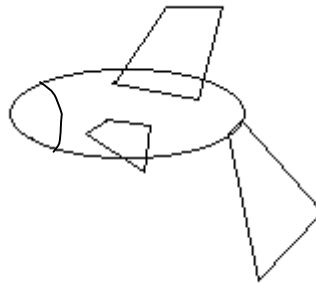
- 2 Use the POLYGON tool to create a fin at the top of the fish's body.



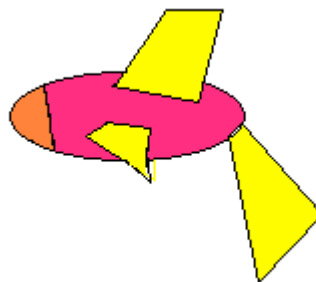
- 3 Add two more fins (POLYGONS) at the lower side of the body and at the end.



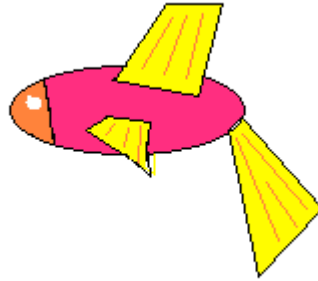
- 4 Use the CURVE tool to create the head of the fish.



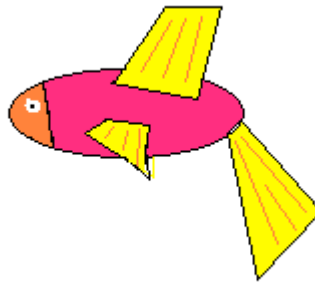
- 5 Use the FILL WITH COLOUR to fill the head with a solid orange colour, fill the body with orange and fill the fins with yellow.



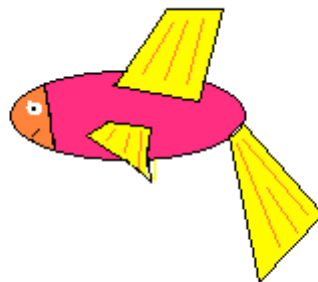
- 6 Use the LINE tool to add some ORANGE lines to the fins and use the ELLIPSE tool with WHITE to draw a small circle on the head to represent the eye.



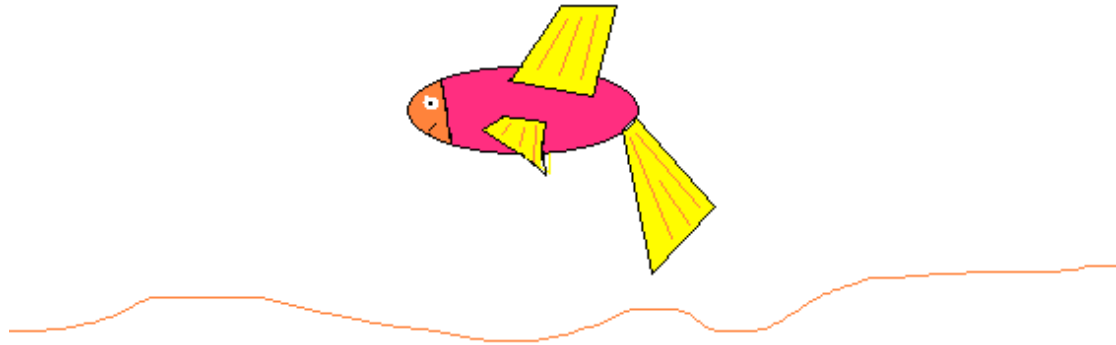
- 7 Click on BLACK and with the ELLIPSE tool draw a small circle inside the white circle to represent the eyeball.



- 8 Click on the CURVE tool and draw a small arc underneath the eye to represent the mouth.



- 9 Use the PENCIL tool to draw an ocean bed in YELLOW below the fish.



- 10 Use the PENCIL tool to add some GREY and BROWN rocks on the ocean bed.

