

Special Effects

The LIQUIFY filter allows you to modify the appearance of an object.

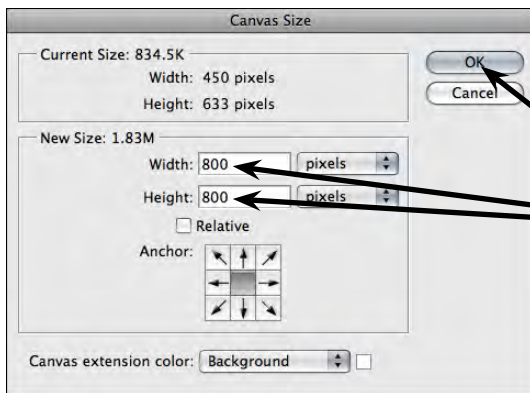
Loading the Prepared File

- 1 Load Adobe Photoshop CS3 or close the current document.
- 2 Display the FILE menu and select OPEN.
- 3 Access the PIT1 SUPPORT FILES, open the GRAPHICS folder and open the CAT file.

Increasing the Canvas Size

The canvas (or background) size can be increased to provide more room for the effects to be made.

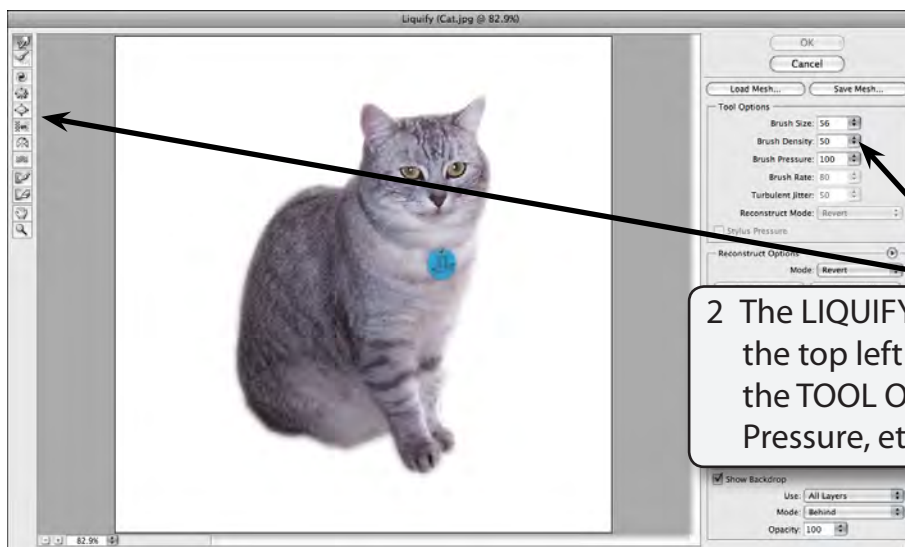
- 1 Display the IMAGE menu and select CANVAS SIZE.



2 Set the WIDTH and HEIGHT boxes to 800 pixels and select OK.

The Liquify Filter

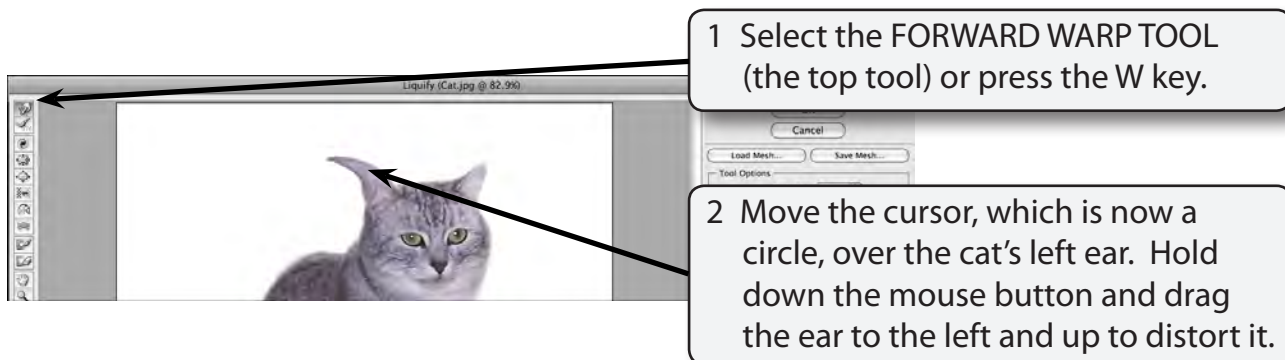
- 1 Display the FILTER menu and select LIQUIFY. The cat should be displayed in the LIQUIFY dialogue box.



- 2 The LIQUIFY tools are displayed at the top left of the dialogue box and the TOOL OPTIONS (Brush Size, Brush Pressure, etc.) at the right.

A The Forward Warp Tool

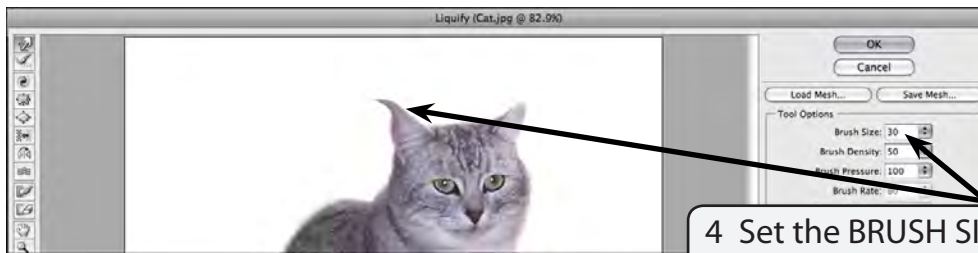
The FORWARD WARP TOOL pushes pixels (screen units) forward as you drag the mouse.



- 1 Select the FORWARD WARP TOOL (the top tool) or press the W key.

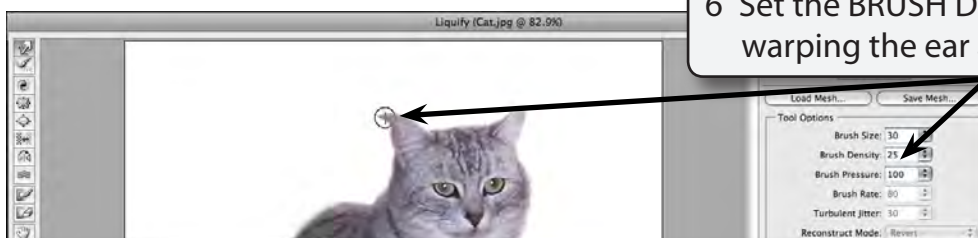
- 2 Move the cursor, which is now a circle, over the cat's left ear. Hold down the mouse button and drag the ear to the left and up to distort it.

- 3 Click on the RESTORE ALL button in the options at the right of the dialogue box and the image will be returned to its original state (you can also press CTRL+Z or COMMAND+Z to UNDO the last step of the effect, or ALT+CTRL+Z or OPTION+COMMAND+Z to STEP BACKWARDS through previous steps).



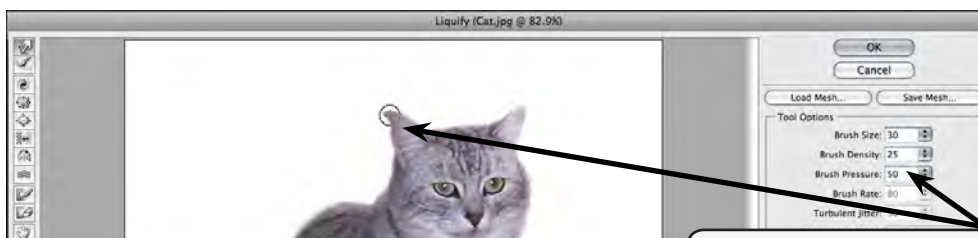
4 Set the BRUSH SIZE box to 30 in the TOOL OPTIONS and warp the ear again to see the effect that the different brush size has.

- 5 Click on the RESTORE ALL button at the right of the dialogue box or press CTRL+Z or COMMAND+Z to UNDO the effect.



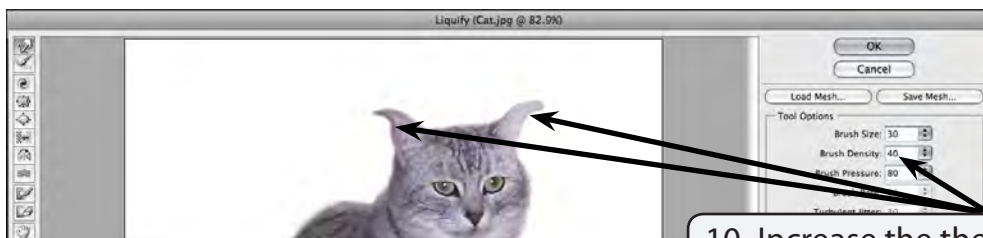
6 Set the BRUSH DENSITY to 25 and try warping the ear again.

- 7 Click on the RESTORE ALL button or press CTRL+Z or COMMAND+Z to UNDO the effect.



8 Set the BRUSH PRESSURE to 50 and try warping the ear again. The smaller BRUSH PRESSURE makes the warping more gradual.

- 9 Click on the RESTORE ALL button to UNDO the effect.



10 Increase the the BRUSH DENSITY to 40, the BRUSH PRESSURE to 80 and try warping both cat's ears.

11 Experiment with some other warps then click on the RESTORE ALL button to return to the original cat.

B The Reconstruction Tool

The RECONSTRUCTION TOOL gradually rebuilds parts of your image back to its original state. It is very handy if you change the image more than you intended and you just want sections to be a little less pronounced.



1 Make some warps to the cat's head.



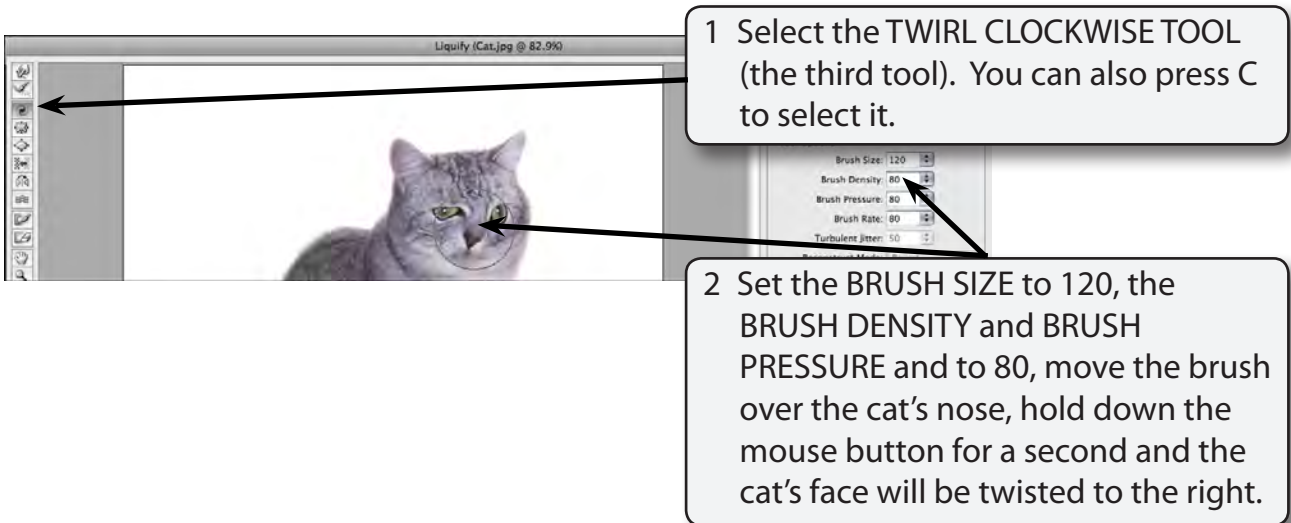
2 Select the RECONSTRUCTION TOOL (the second tool). You can also press R to select it.

3 Click a few times on some of the changes that you made and the program will gradually return that section to its original state.

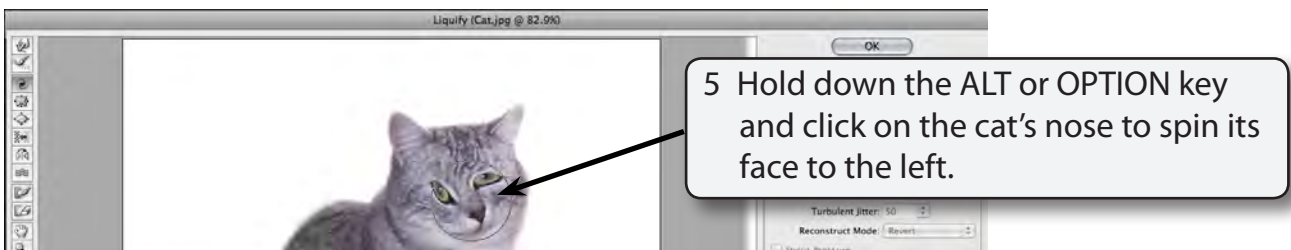
4 Restore the image to the original shape.

C Twirling

You can spin part of an image either clockwise or counter clockwise.



- 3 Restore the image to its original shape.
- 4 To twirl an image to the left (counter clockwise) the ALT or OPTION key is used.



- 6 Restore the image to its original shape.