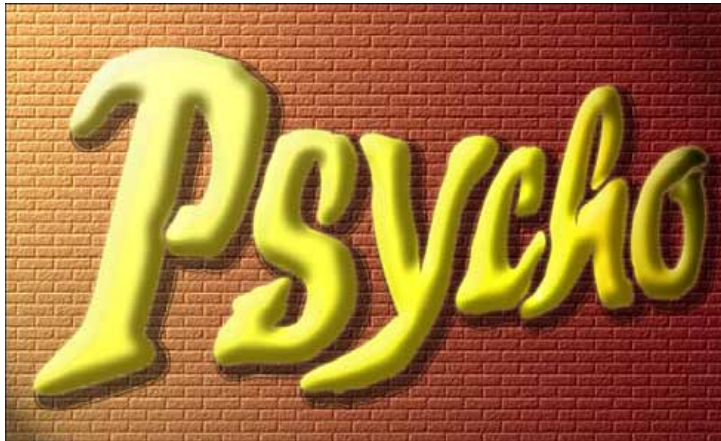


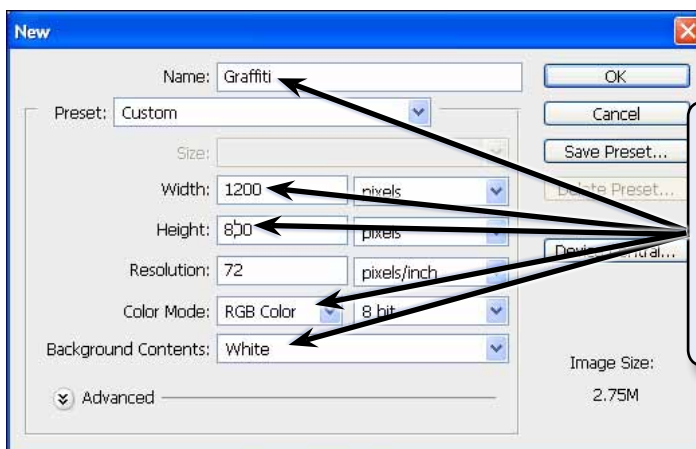
Graffiti on a Brick Wall

Graffiti on buildings can annoy some people, so graffiti can be created on a computer without annoying anyone. In this case a brick wall will be created and some text added to the wall as shown in the following diagram.



Starting a New Document

- 1 Load Photoshop or close the current files then display the FILE menu and select NEW.



2 Set the NAME of the document to GRAFFITI, the WIDTH to 1200 pixels, the HEIGHT to 800 pixels, the COLOUR MODE to RGB COLOUR, 8 BIT and the BACKGROUND CONTENTS to WHITE.

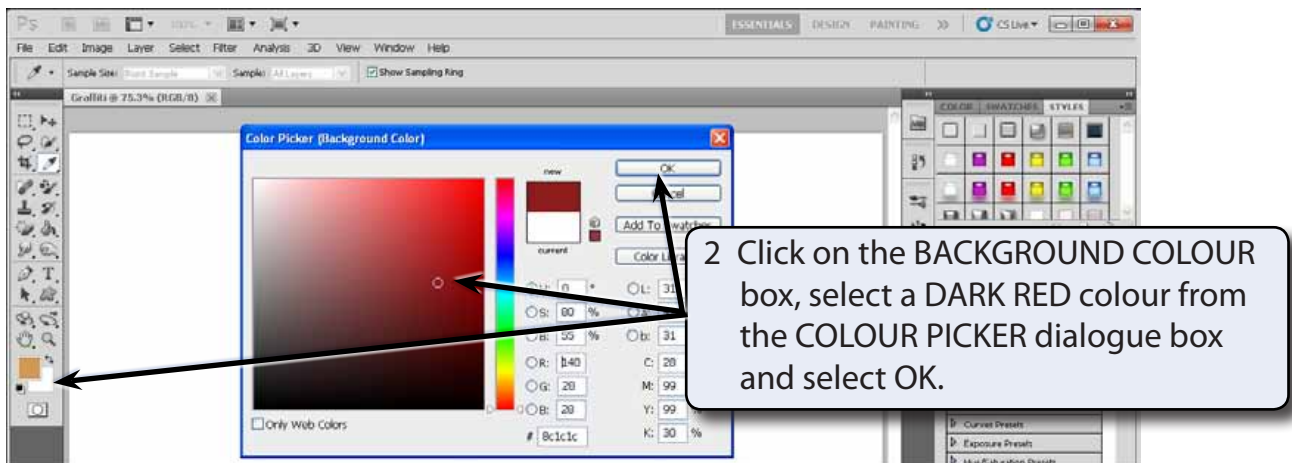
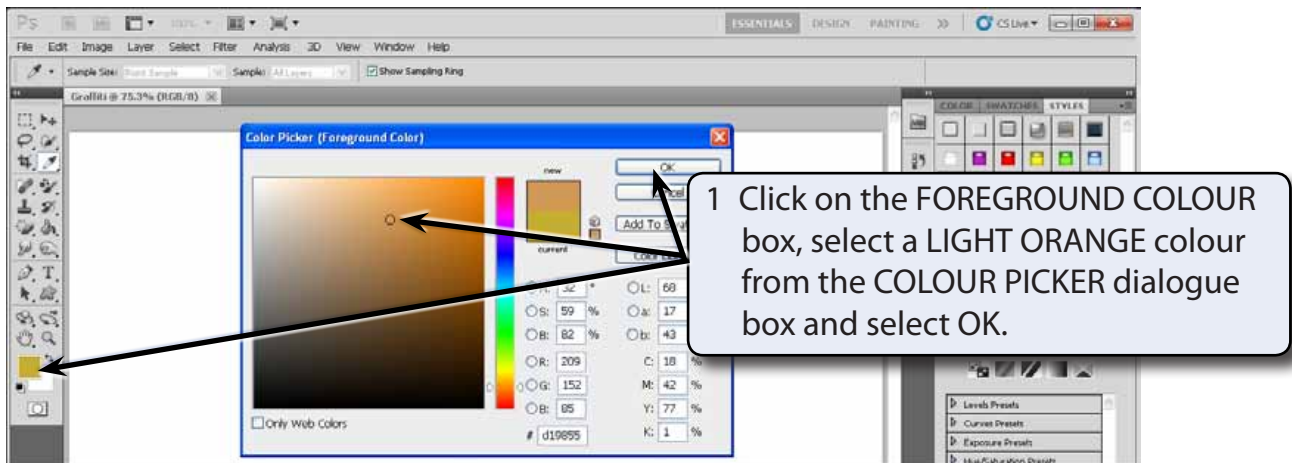
- 3 Select OK to start the document.

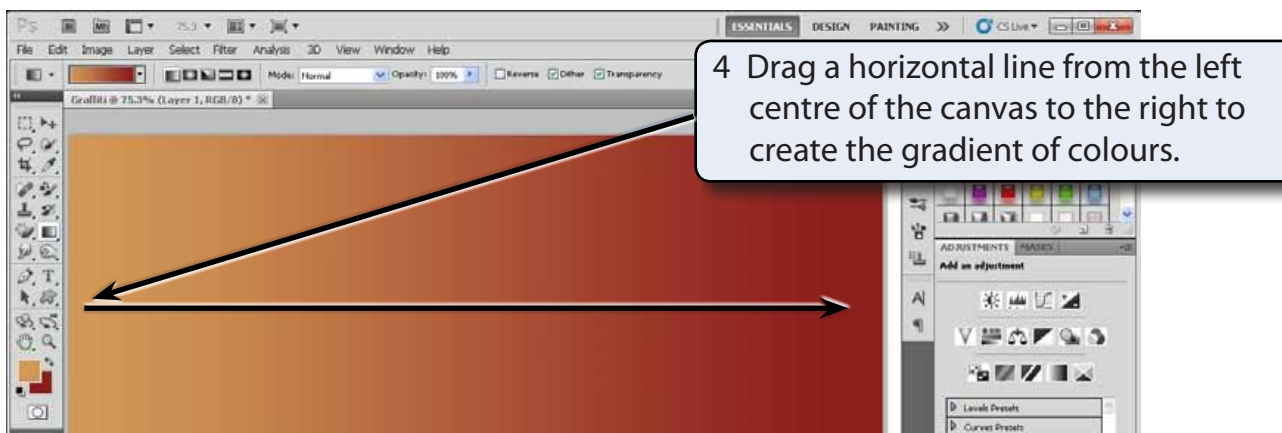
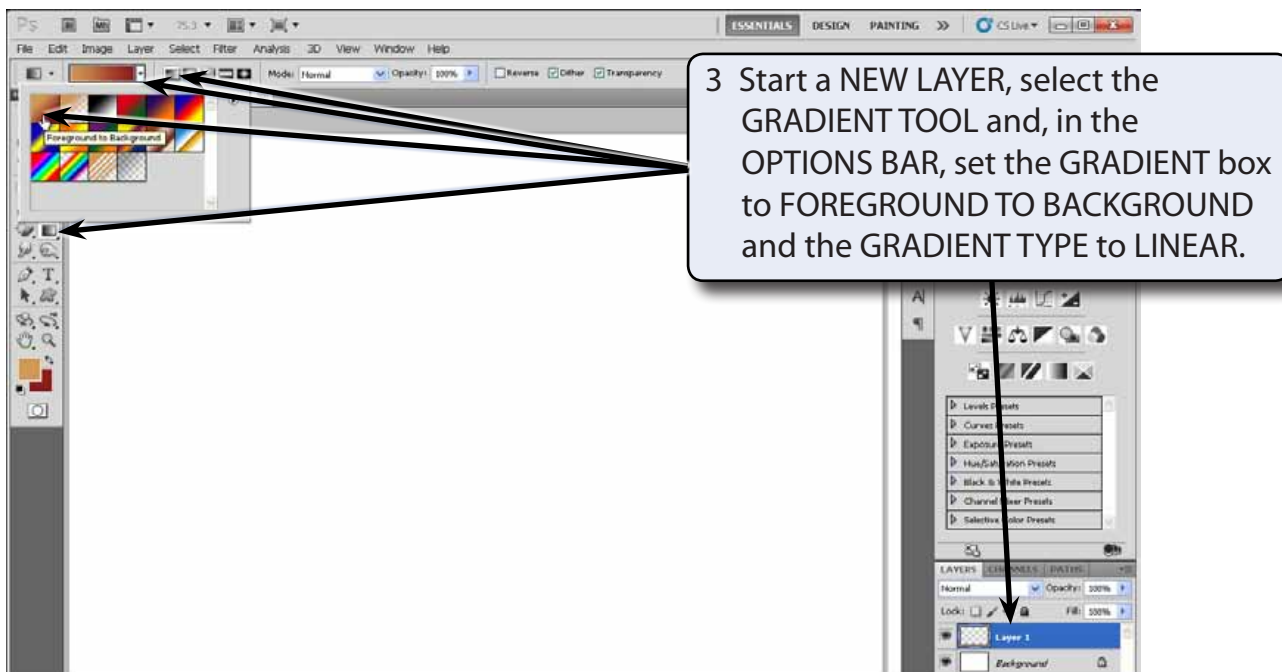
Creating the Brick Wall

Photoshop provides a brick TEXTURE filter that will be used to create the brick wall. It will be set with light coming from a street light at the top left of the canvas.

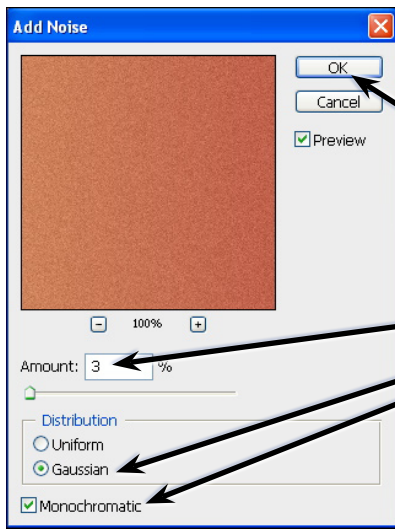
A Setting the Gradient Colours

A gradient fill will be used to set the brick's colour to fade from orange to dark red.





- 5 Some noise can be added to the colours to make it look more realistic. Display the FILTER menu, highlight NOISE and select ADD NOISE.

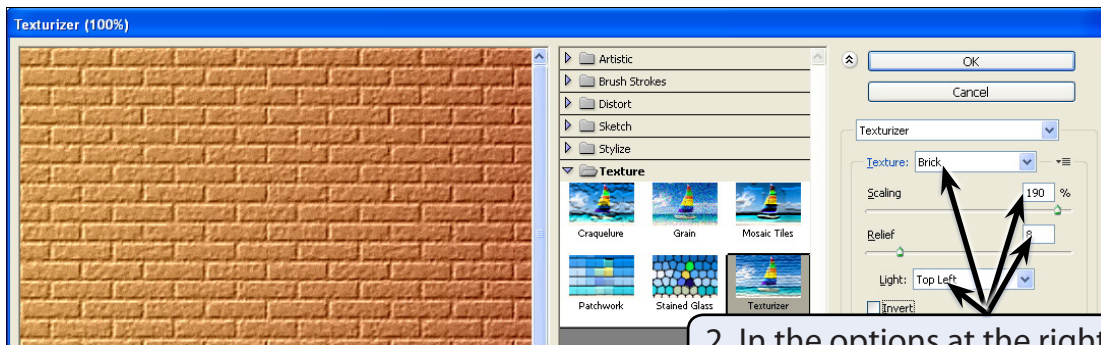


6 Set the noise AMOUNT to 3 per cent, turn on GAUSSIAN and MONOCHROMATIC, then select OK.

B Adding the Brick Texture

A brick texture can be used to create realistic looking brick work.

- 1 Display the FILTER menu, highlight TEXTURE and select TEXTURIZER.



2 In the options at the right of the TEXTURIZER dialogue box set the TEXTURE box to BRICK, the SCALING to 190%, the RELIEF to 8 and the LIGHT to TOP LEFT.

- 3 Select OK to set the brick texture.