

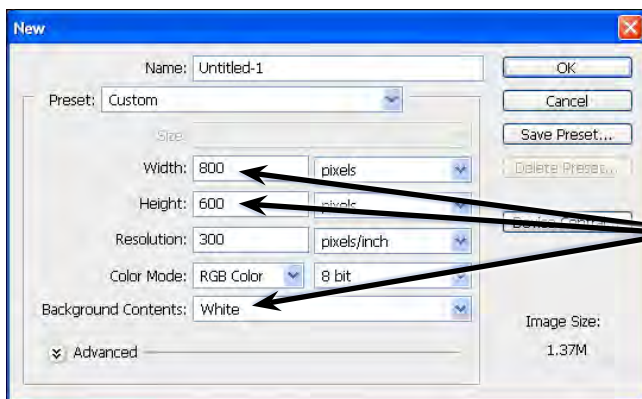
Graffiti on a Building

Rather than displaying graffiti on a flat surface, you can also display it on a photograph and use perspective tools to make it look realistic. In this Exercise some graffiti will be added to a building then moved behind the snow and branches as shown in the following diagram:



Starting a New Document

- 1 Load Photoshop or close the current files then display the FILE menu and select NEW.

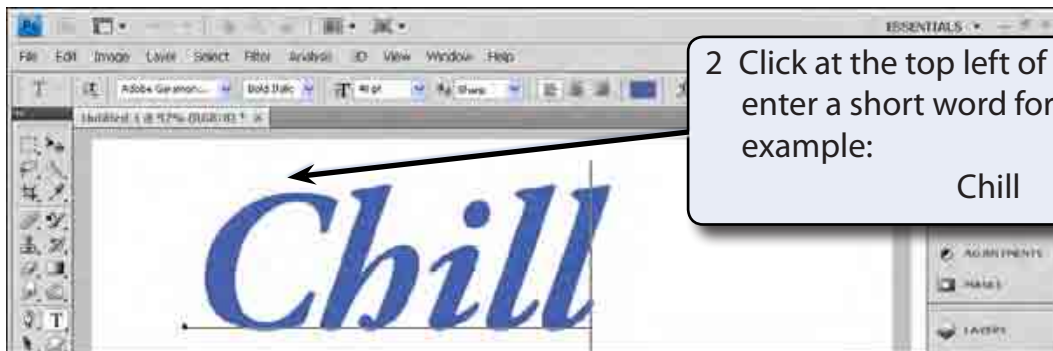
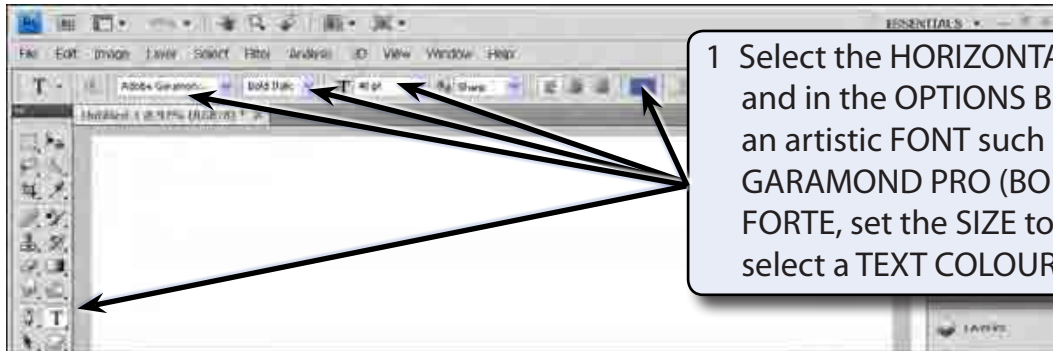


2 Set the WIDTH to 800 pixels, the HEIGHT to 600 pixels and the BACKGROUND COLOUR to WHITE.

- 3 Select OK to start the document.

Entering Some Text

Some text will be entered and the WARP transformation used to distort it.

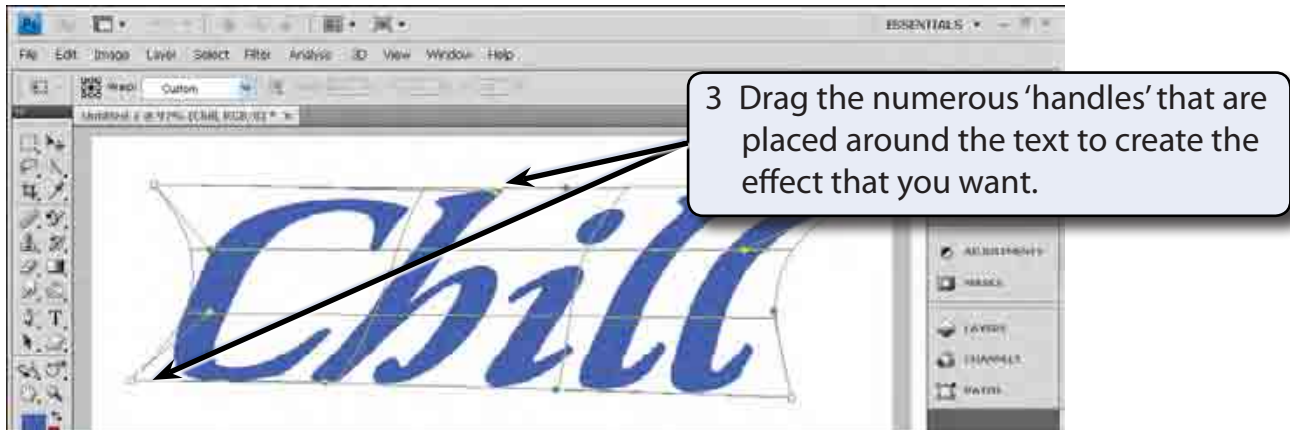


4 Press <enter> or <return> to accept the transformation.

Warping the Text

Rather than using the LIQUIFY filter to create the graffiti text, you can WARP the text. Again, to do this text must be rasterized.

- 1 Display the LAYER menu, highlight RASTERIZE and select LAYER.
- 2 Display the EDIT menu, highlight TRANSFORM and select WARP.



- 4 Press <enter> or <return> to accept the transformation.

NOTE: No effects will be applied to the text at this stage. The text will be made to look like graffiti once it has been added to the photo.

- 5 Save the document in your STORAGE folder as a PHOTOSHOP file under the file name:

Warped Text

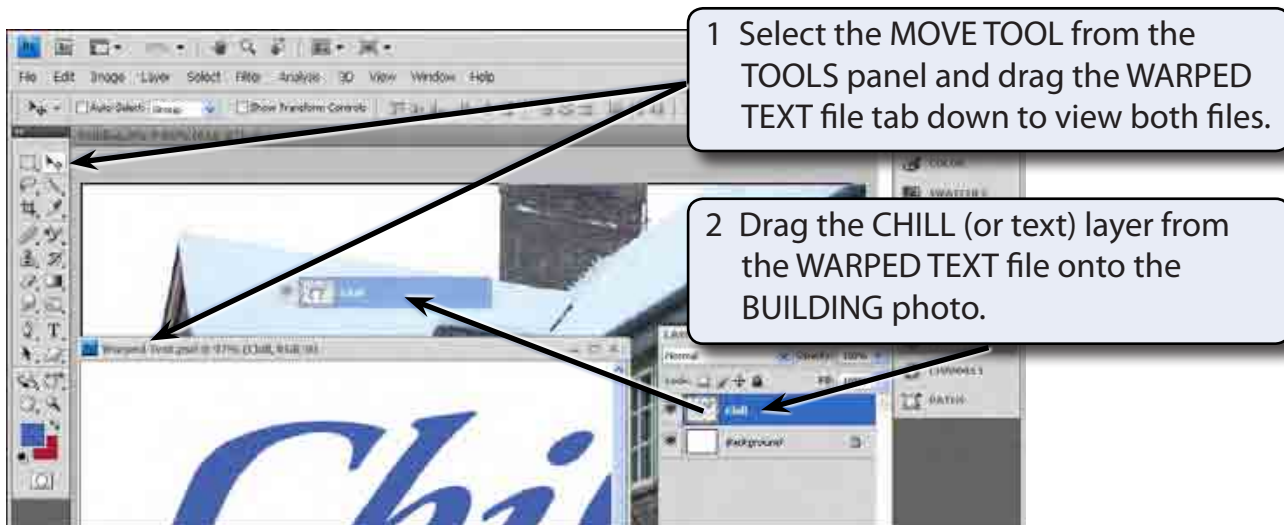
Loading the Photograph

A photo of a house has been prepared for you and the graffiti text will be placed on one of its walls.

- 1 Display the FILE menu and select OPEN.
- 2 Access the PSCs4 SUPPORT FILES, open the CHAPTER 26 folder and open the BUILDING photo.
- 3 The graffiti will be added below the right window.

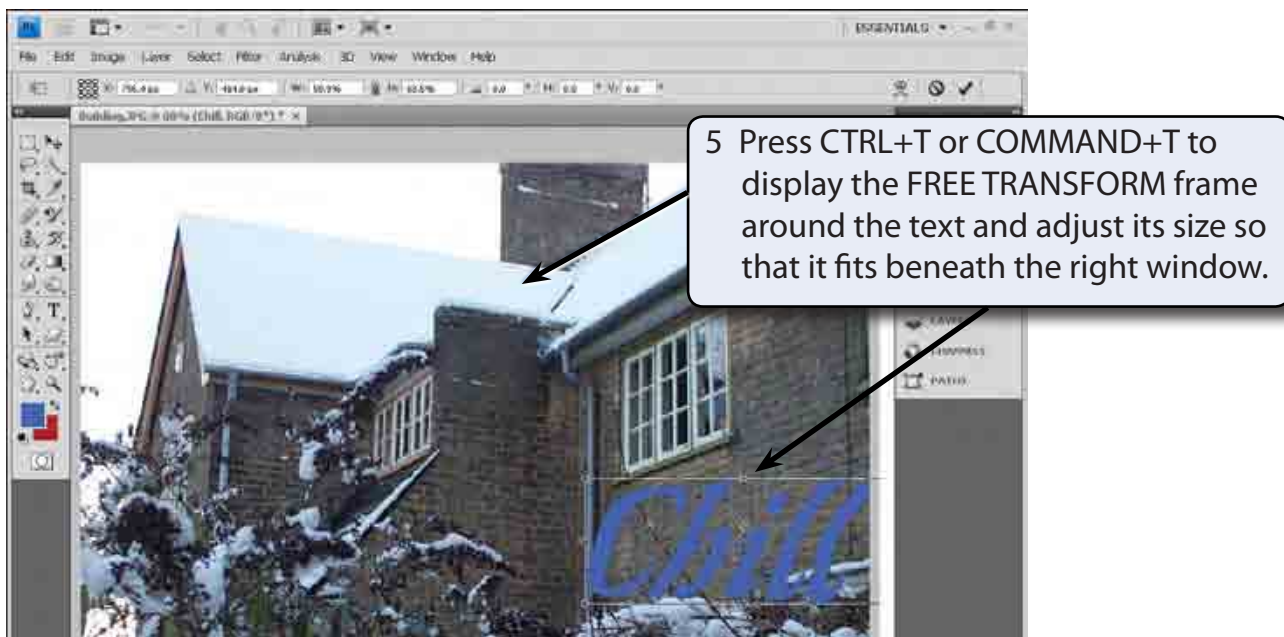
Inserting the Warped Text

The warped text needs to be added to the BUILDING file.



3 Select OK if you receive a message about converting colours.

4 Close the WARPED TEXT file.



- 6 Press <enter> or <return> to accept the transformation.

Setting the Vanishing Point

In order to make the text look more realistic, it needs to slant in the same perspective as the side of the building. The VANISHING POINT filter can be used to achieve this.

A Starting a New layer

The text will be copied into a vanishing point frame in a new layer.

