

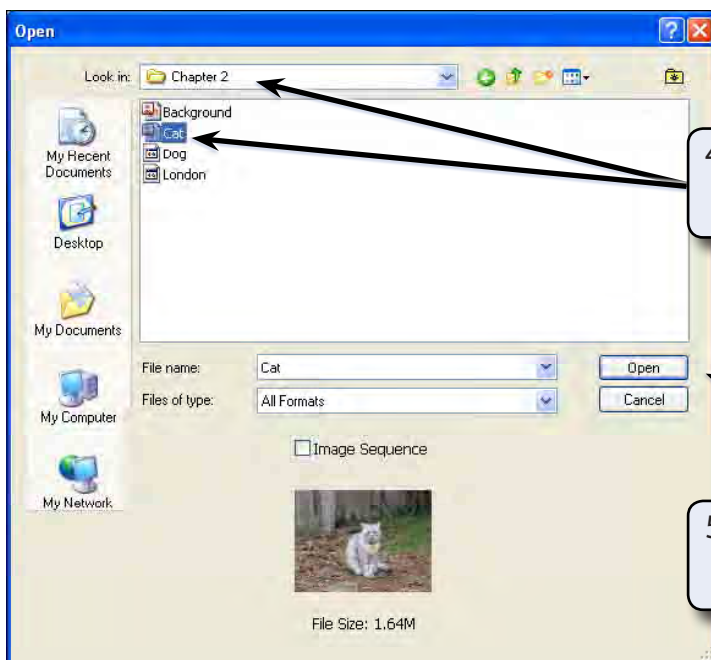
## Selecting Parts of Images

An important feature of any graphics program is its ability to select parts of images. This might include separating a image from its background or removing a background. In this chapter you will learn how to select parts of images using a variety of different tools.

### Loading a Sample Image

A sample photo will be opened and some editing carried out on it.

- 1 Load Photoshop or close the current file.
- 2 Display the FILE menu and select OPEN.
- 3 Access the PSCs4 SUPPORT FILES folder.



4 Open the CHAPTER 2 folder and select the CAT.JPG image

5 Select OPEN and the CAT.JPG image should load.

- 6 Press CTRL+0 or COMMAND+0 to set the size of the image window so that it fills the screen.

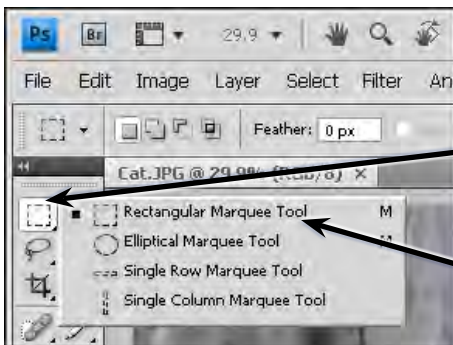
## The Editing Tools

Photoshop offers numerous ways of selecting parts of a drawing. Some of them are the basic, such as the EDIT MARQUEE TOOL and the LASSO TOOL, however, some are much more powerful, such as the QUICK SELECTION TOOL and the MAGIC WAND TOOL.

### The Edit Marquee

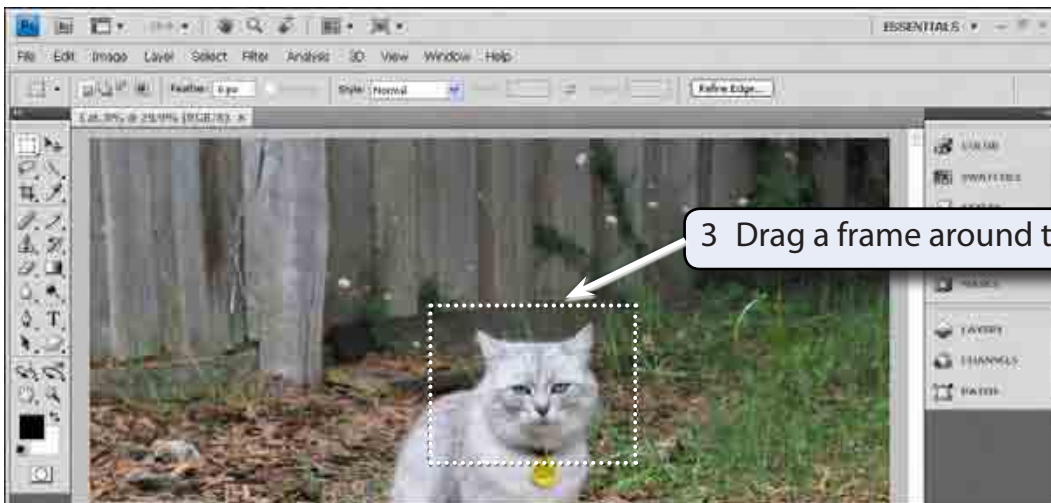
There are two main edit marquees, one is rectangular and the other is an oval.

#### A The Rectangular Marquee Tool



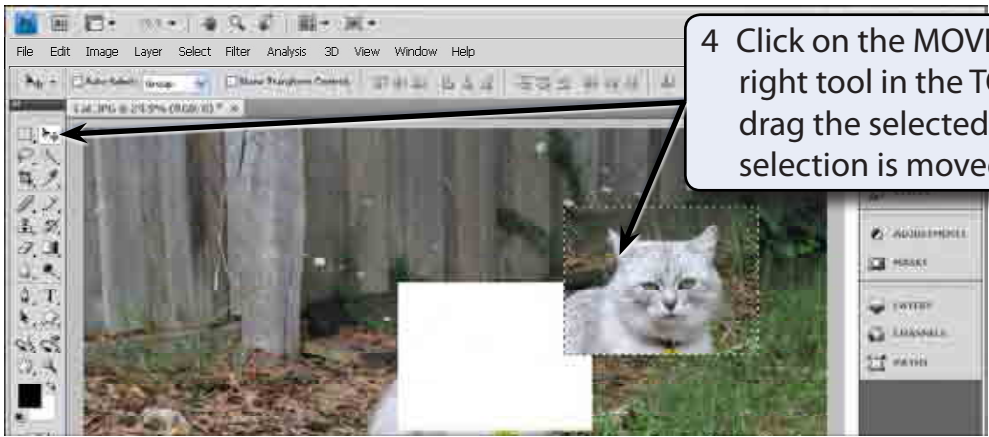
1 Move the pointer over the EDIT MARQUEE TOOL (the top left tool) in the TOOLS panel, hold down the mouse button and the edit marquees should be displayed.

2 Select the RECTANGULAR MARQUEE TOOL.



3 Drag a frame around the cat's head.

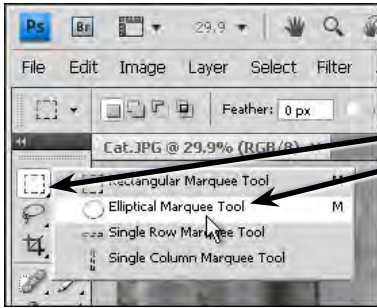
**NOTE:** A frame of 'marching ants' is added to the screen to highlight the selection. This selected area can be moved, copied, rotated, resized, transformed and adjusted.



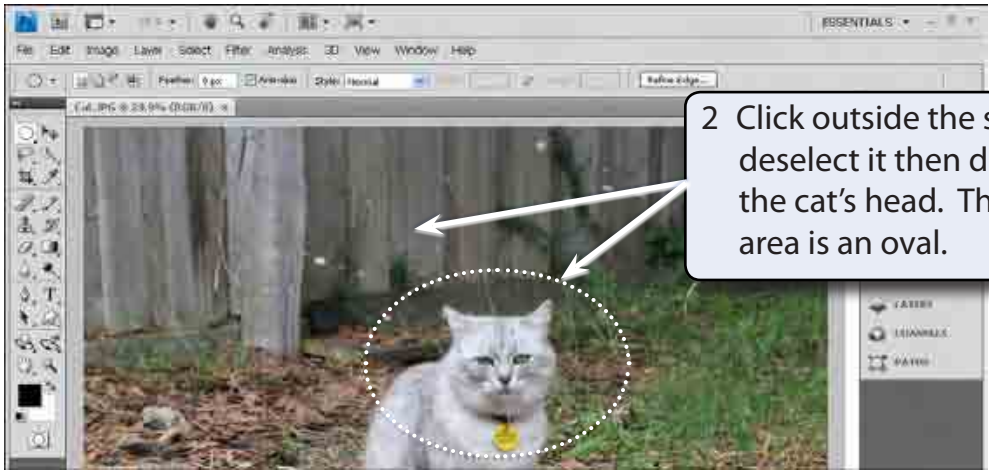
4 Click on the MOVE TOOL (the top right tool in the TOOLS panel) and drag the selected area. Just the selection is moved.

5 Press CTRL+Z or COMMAND+Z (or select UNDO MOVE from the EDIT menu) to return the selected area to its original position.

### B The Elliptical Marquee Tool

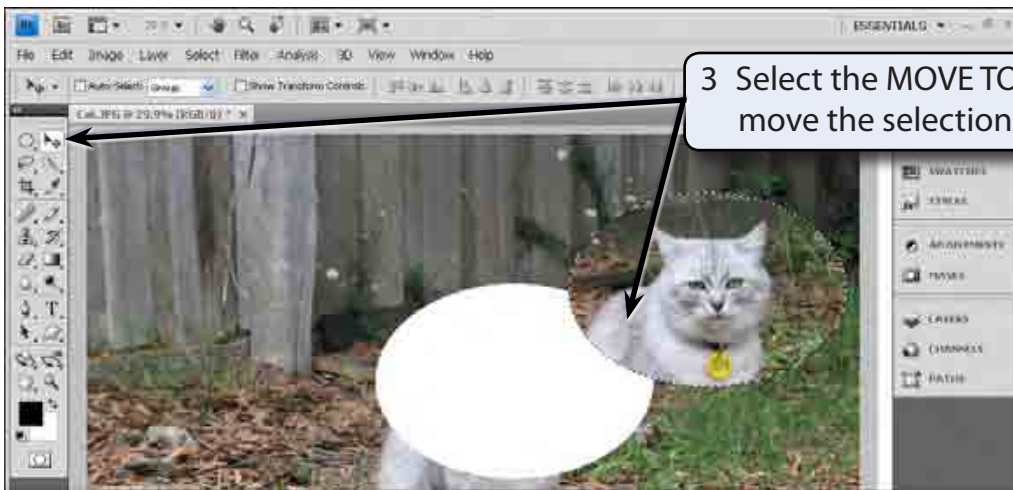


1 Click and hold on the EDIT MARQUEE TOOL again and select the ELLIPTICAL MARQUEE tool.

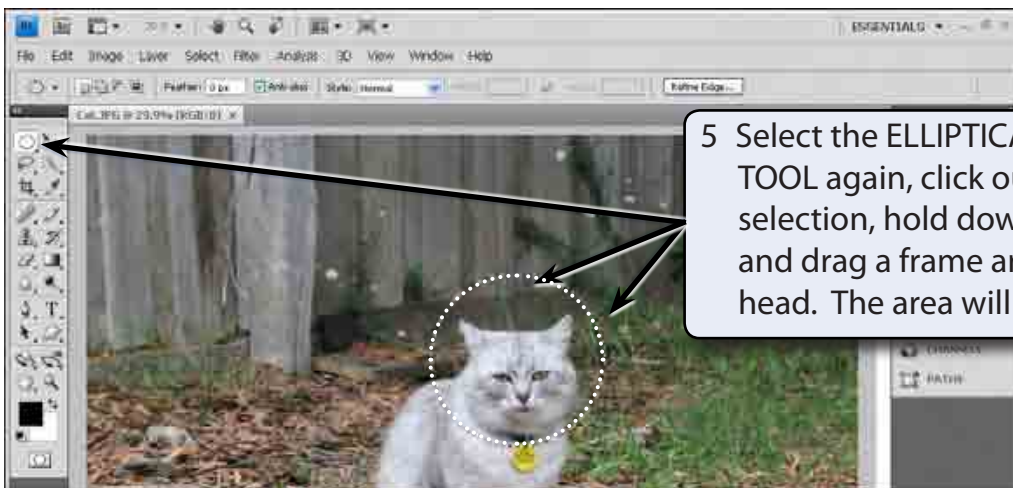


2 Click outside the selection area to deselect it then drag a frame around the cat's head. This time the selected area is an oval.

**NOTE:** When you select the EDIT MARQUEE tool you can press **SHIFT+M** to toggle between the **RECTANGULAR MARQUEE** and the **ELLIPTICAL MARQUEE**.



4 Press CTRL+Z or COMMAND+Z to undo the move.



**NOTE:** The SHIFT causes the ellipse to be a circle. If you hold down the SHIFT key and drag the RECTANGULAR MARQUEE TOOL, a square selection area is drawn.

## Deselecting Objects

When you select an area on the screen it remains selected until you select another area. To turn a selection off:

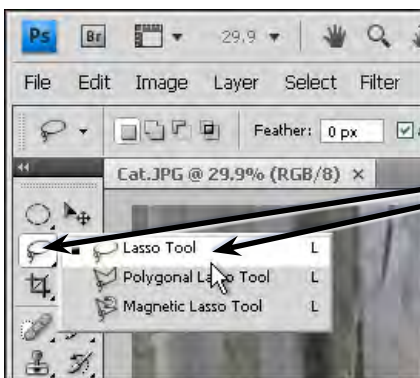
Press CTRL+D or COMMAND+D and the selection should be removed.

## The Lasso Tools

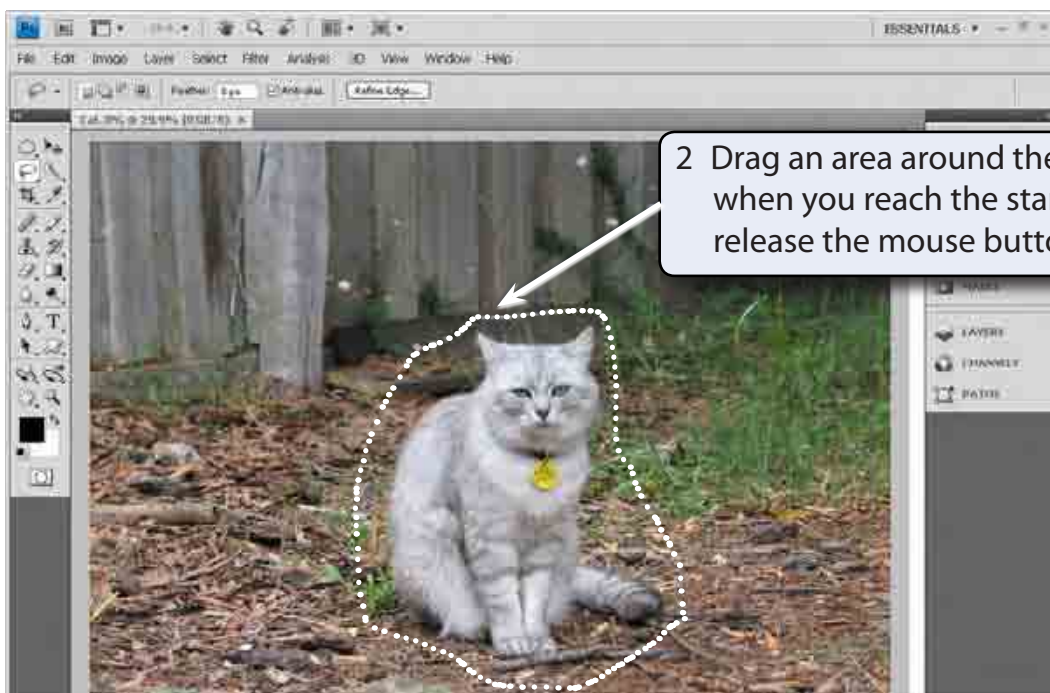
The LASSO tools allow you to make more detailed area selections. There are three LASSO tools. The normal LASSO TOOL that you may have used in paint programs before, the POLYGON LASSO TOOL and the MAGNETIC LASSO TOOL.

### A The Lasso Tool

The LASSO TOOL allows you to select freehand areas of an image.



1 Click and hold the mouse button on the LASSO TOOL in the TOOLS panel and the three LASSO TOOLS should be displayed. Select the LASSO TOOL.



2 Drag an area around the cat and, when you reach the starting point, release the mouse button.