

Adjusting the Look of Images

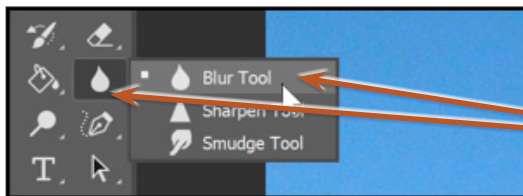
Photoshop offers a range of tools that allow you to adjust the colour and texture of images and photographs.

Loading a Sample File

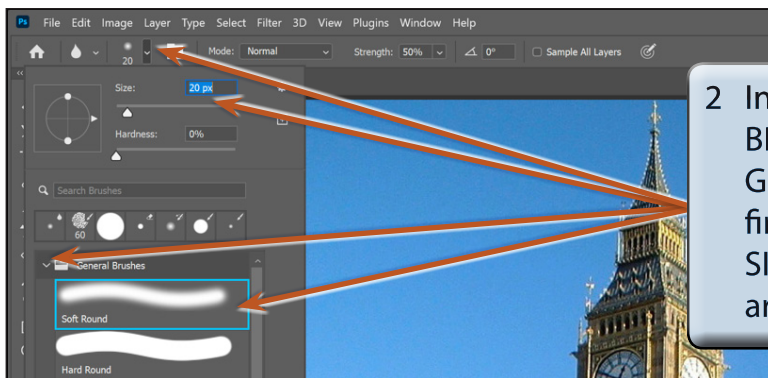
- 1 Load Photoshop or close the current file then select OPEN from the WELCOME screen or FILE menu.
- 2 Access the PScC SUPPORT FILES, open the CHAPTER 8 folder and open the LONDON image.
- 3 Press **CTRL+0** or **COMMAND+0** to set the view to FIT ON SCREEN and the TOOLS panel should be set to 2 columns.

The Blur Tool

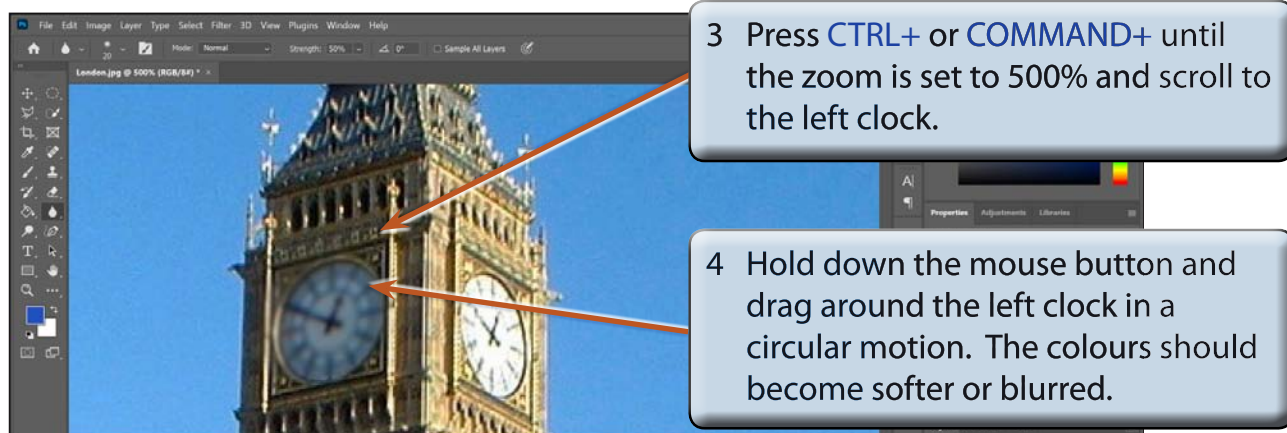
The BLUR TOOL softens hard edges in an image to reduce its details. Let's make one of Big Ben's clocks a little less detailed.



- 1 Click and hold down the mouse button on the tool below the ERASER TOOL and select the BLUR TOOL.



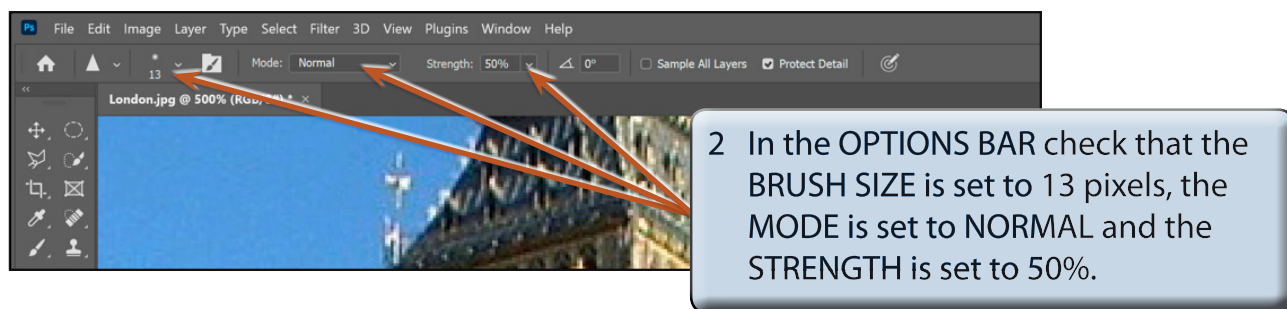
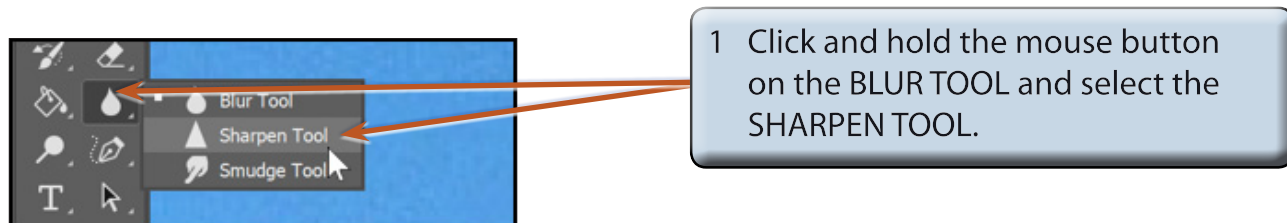
- 2 In the OPTIONS BAR click on the BRUSH SIZE arrow, expand the GENERAL BRUSHES folder, select the first SOFT ROUND brush and set the SIZE to 20 pixels then click on the arrow again to close the panel.



- 5 The settings in the **OPTIONS BAR** allow you to change the **BRUSH SIZE**, the **MODE** which is the way the paint blends with the pixels and the **STRENGTH** of the blur.
- 6 Try a few of the options then **UNDO** the changes using **CTRL+Z** or **COMMAND+Z**.

The Sharpen Tool

The **SHARPEN TOOL** has the opposite effect to the **BLUR TOOL**. It sharpens soft edges to increase the clarity or focus.

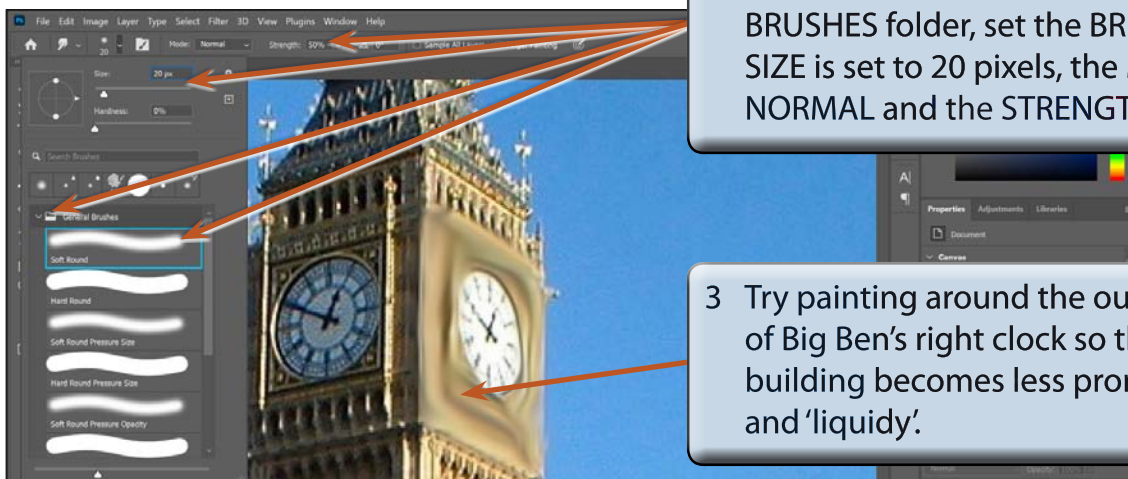
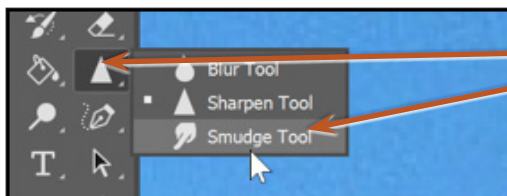




- 4 Try some of the other settings in the OPTIONS BAR.
- 5 Undo the changes by pressing **CTRL+Z** or **COMMAND+Z**.

The Smudge Tool

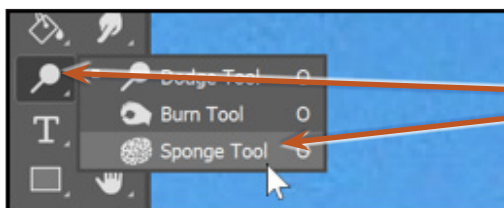
The SMUDGE TOOL picks up the colour where your cursor is and pushes it in the direction that you drag so that colours run into one another.



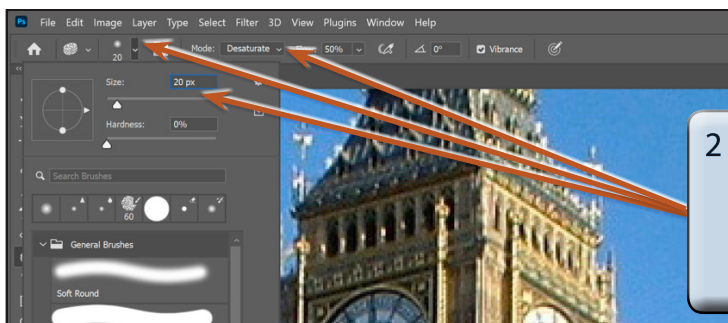
- 4 Again, the OPTIONS BAR can be used to adjust the degree of smudging. Experiment with some of the settings undo the changes.

The Sponge Tool

The SPONGE TOOL changes the saturation or vividness of colours.

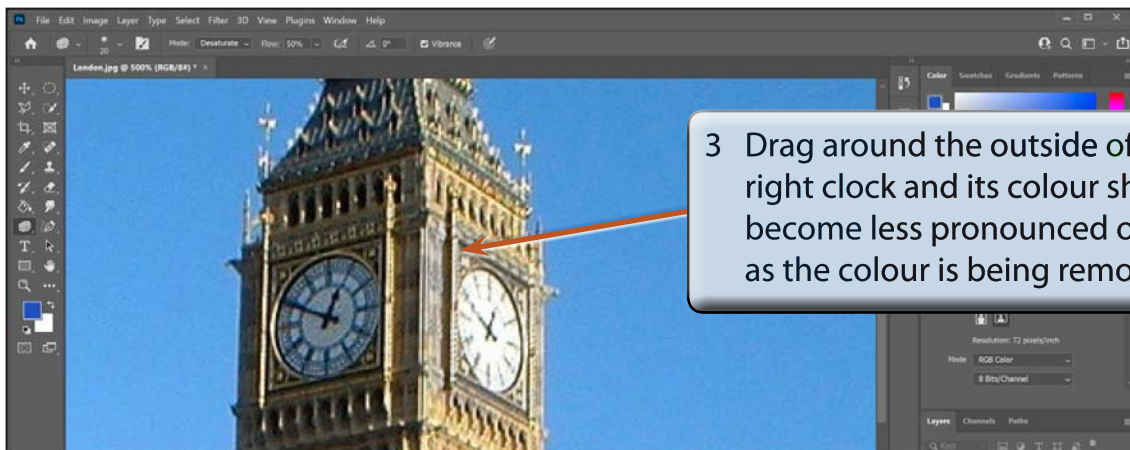


1 Click and hold down the mouse button on the button to the above the TYPE TOOL and select the SPONGE TOOL.



2 In the OPTIONS BAR set the BRUSH SIZE to 20 pixels and the MODE to DESATURATE (this will increase the colour intensity).

NOTE: You can increase the FLOW if you want the sponge effect to be more pronounced.



3 Drag around the outside of Big Ben's right clock and its colour should become less pronounced or duller as the colour is being removed.