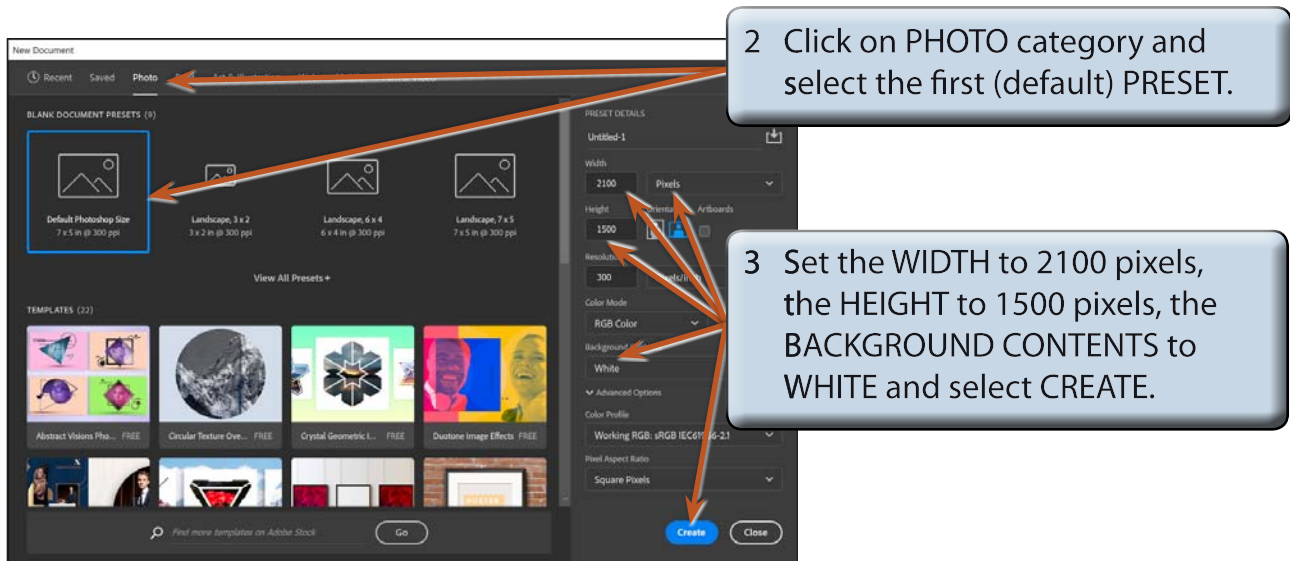


## Adding Text to Designs

Text can be added to photographs and manipulated. There are text effects available to curve letters, display them vertically, set text to follow a path and applying similar effects to those you added to shapes in the last few chapters.

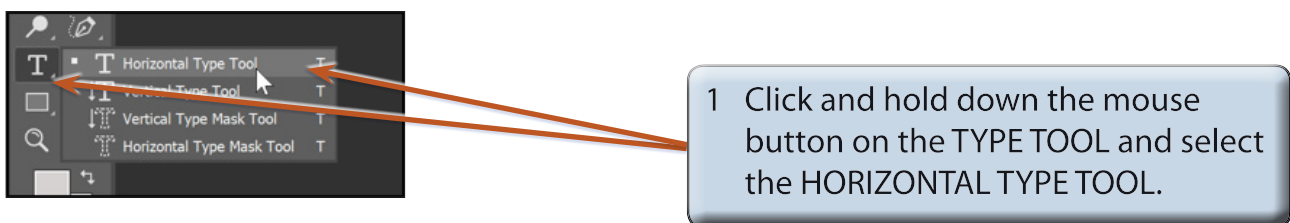
### Starting a New Document

- 1 Load Photoshop or close the current file and select NEW FILE from the WELCOME screen or select NEW from the FILE menu.



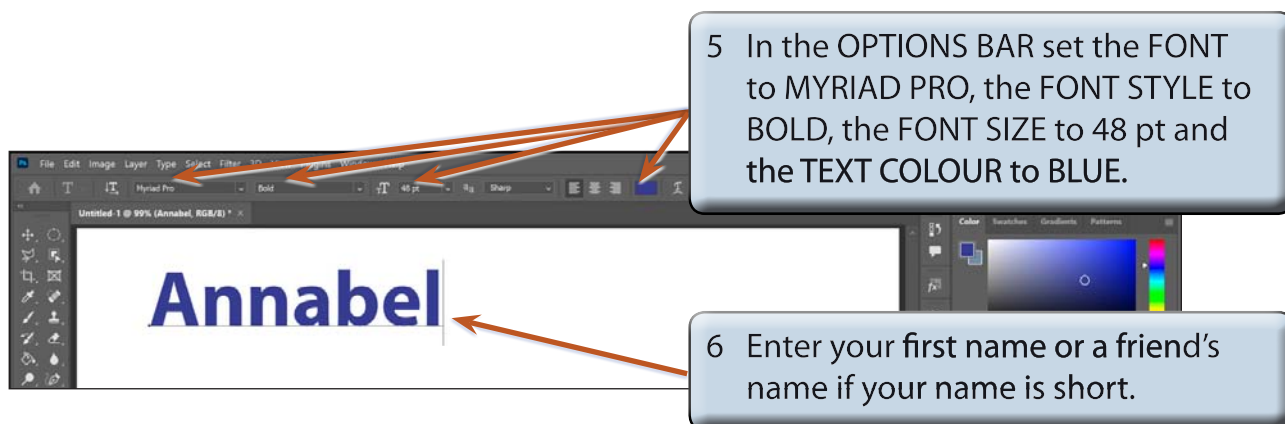
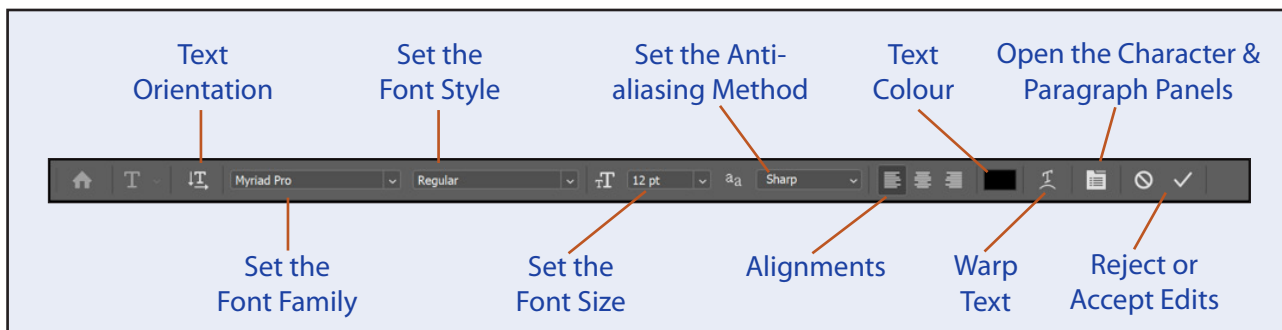
### Entering Text

The TEXT TOOLS are housed within the TYPE TOOL in the TOOLS panel.



- 2 Set the VIEW to FIT ON SCREEN by pressing **CTRL+0** on the Windows system or **COMMAND+0** on the Macintosh system.

- 3 Click the cursor (which is now an I-Beam) near the top left of the canvas.
- 4 The OPTIONS BAR should display the text options which are labelled in the following diagram.

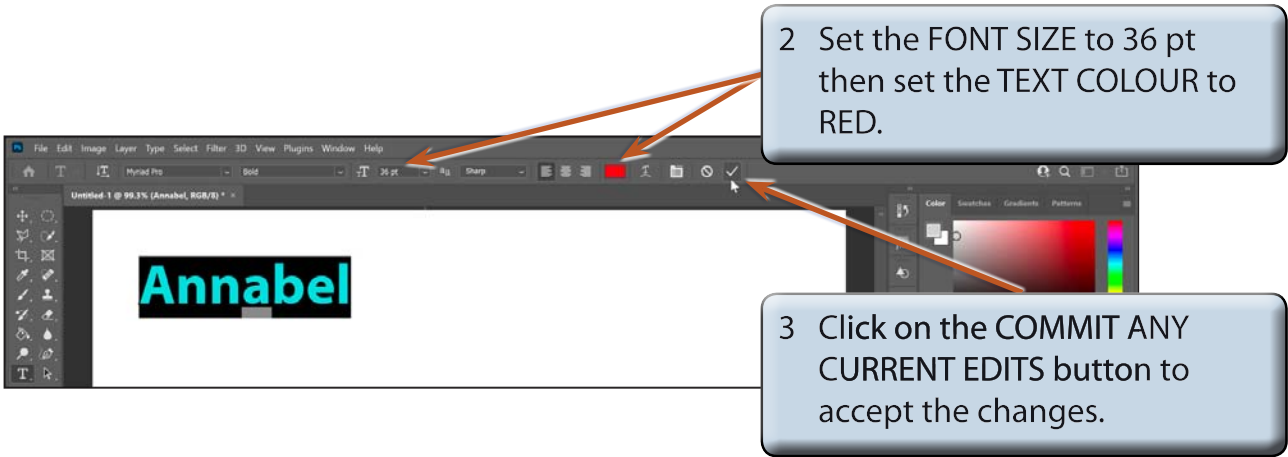


**NOTE: A text layer is created in the LAYERS panel when you click the I-Beam on the canvas.**

## Altering Text

You can alter text once it has been entered.

- 1 Highlight the name by dragging the I-Beam across the letters or by double clicking on the letters.



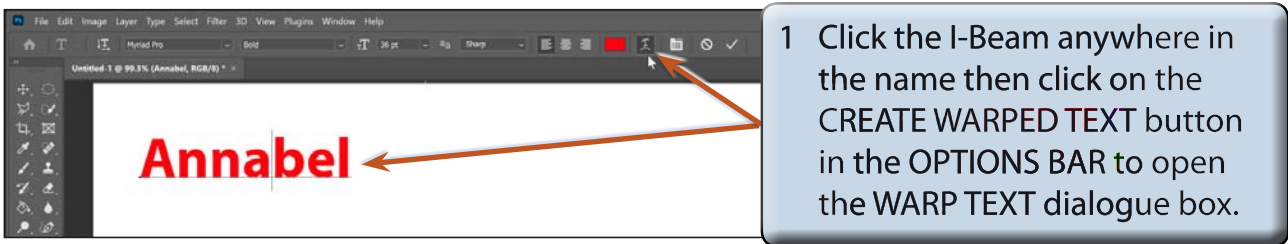
2 Set the FONT SIZE to 36 pt then set the TEXT COLOUR to RED.

3 Click on the COMMIT ANY CURRENT EDITS button to accept the changes.

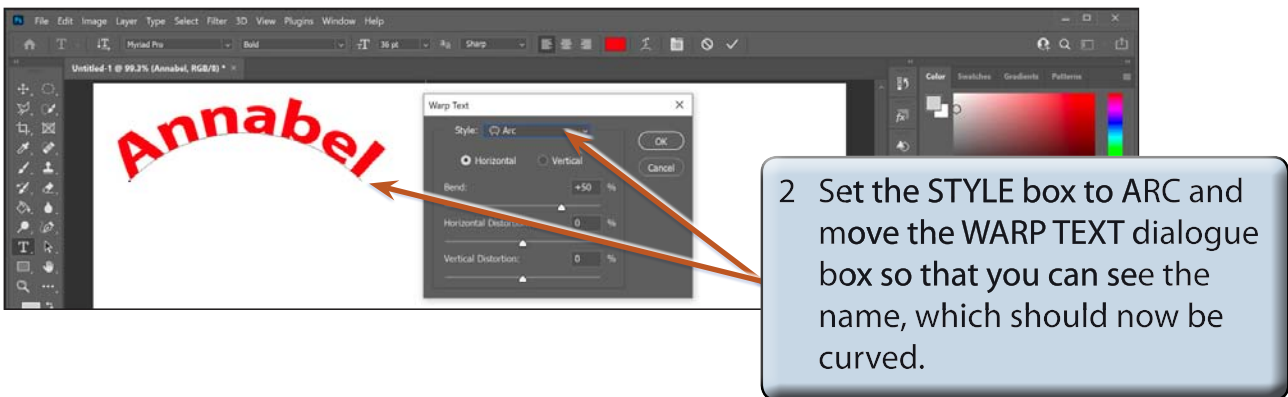
## Warping Text

There are a number of special curved effects that can be applied to the text. These are found in the CREATE WARPED TEXT button in the OPTIONS BAR.

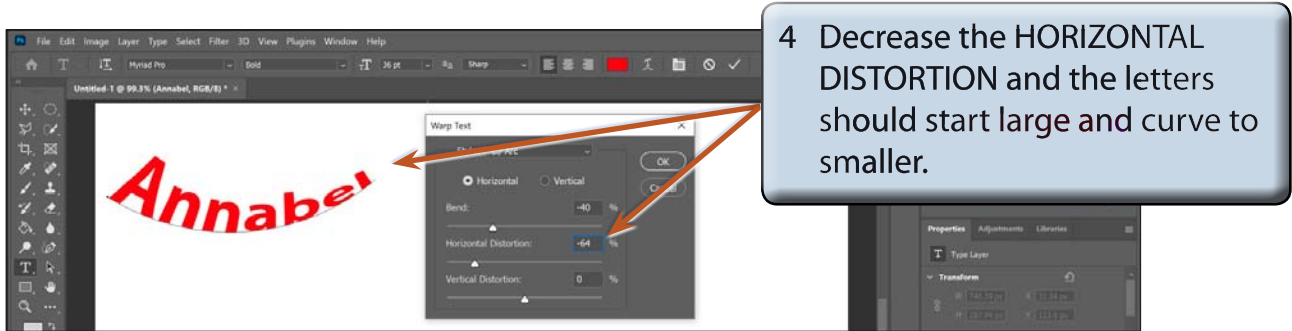
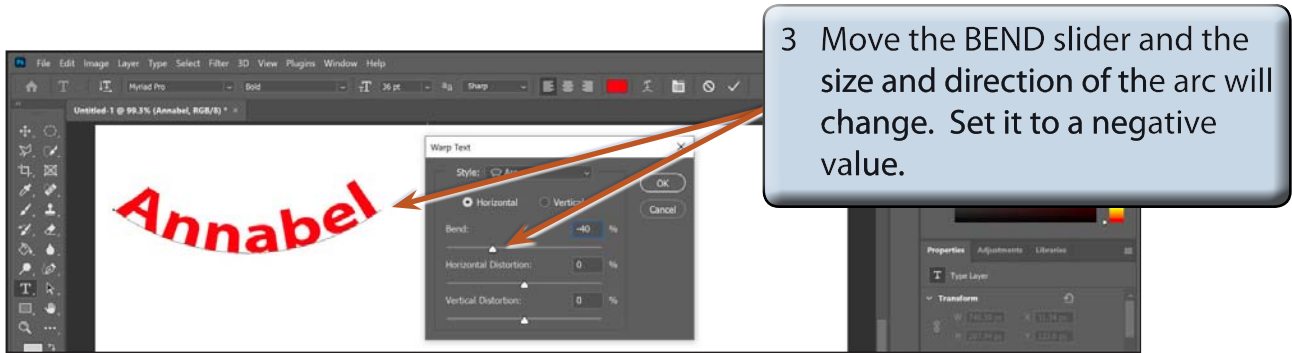
### A Single Arced Text



1 Click the I-Beam anywhere in the name then click on the CREATE WARPED TEXT button in the OPTIONS BAR to open the WARP TEXT dialogue box.



2 Set the STYLE box to ARC and move the WARP TEXT dialogue box so that you can see the name, which should now be curved.



**NOTE: The reverse occurs if you increase the HORIZONTAL DISTORTION.**

