

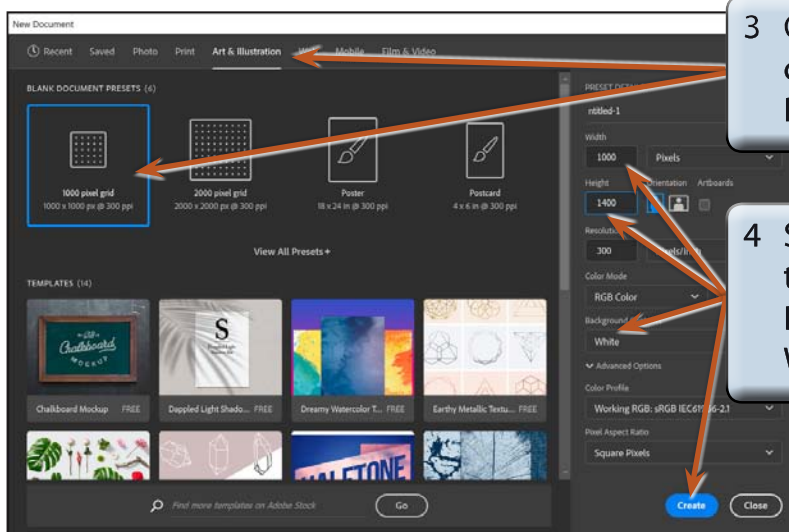
Creating a Detailed Sketch

To practice the use of layers and the drawing tools that Photoshop provides, the following sketch of a road leading to the ocean will be created.



Starting the Document

- 1 Load Adobe Photoshop CC or close the current documents.
- 2 In the WELCOME screen select NEW FILE or select NEW from the FILE menu.



3 Click on the ART & ILLUSTRATION category and select the first PRESET.

4 Set the WIDTH to 1000 pixels, the HEIGHT to 1400 pixels, the BACKGROUND CONTENTS to WHITE and select CREATE.

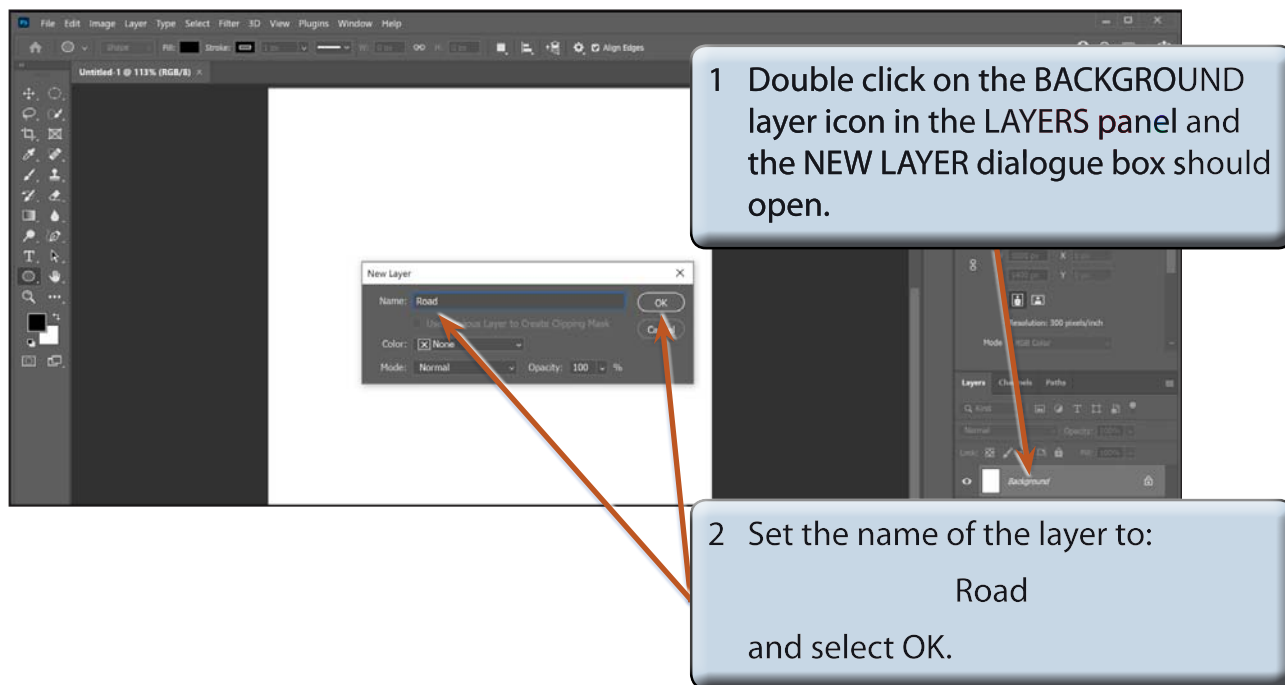
- 5 Press **CTRL+0** or **COMMAND+0** to set the screen view to FIT ON SCREEN, which will allow you to see the whole canvas.
- 6 Check that the screen is set to the ESSENTIALS workspace, with the PANEL GROUP expanded and set the TOOLS panel to 2 columns.

Creating the Road and Hill

The first part of the sketch will involve creating a road that appears to flow away from the viewer, with a hill to its right.

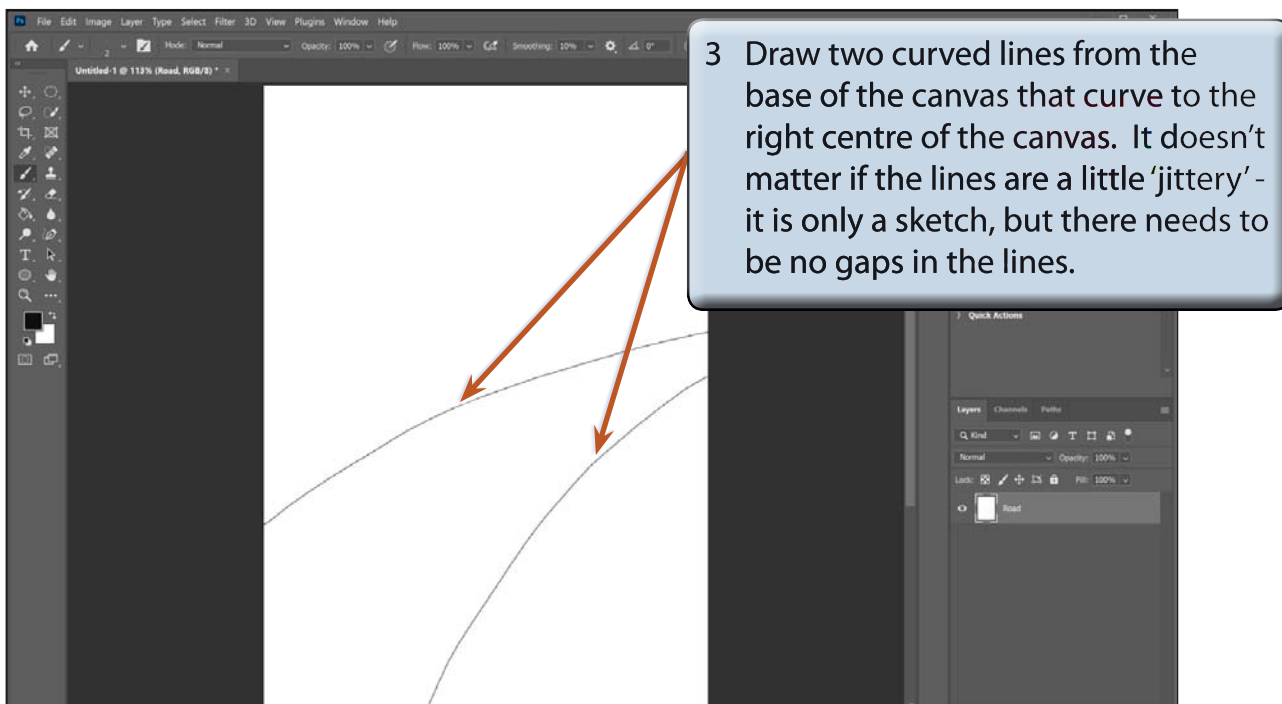
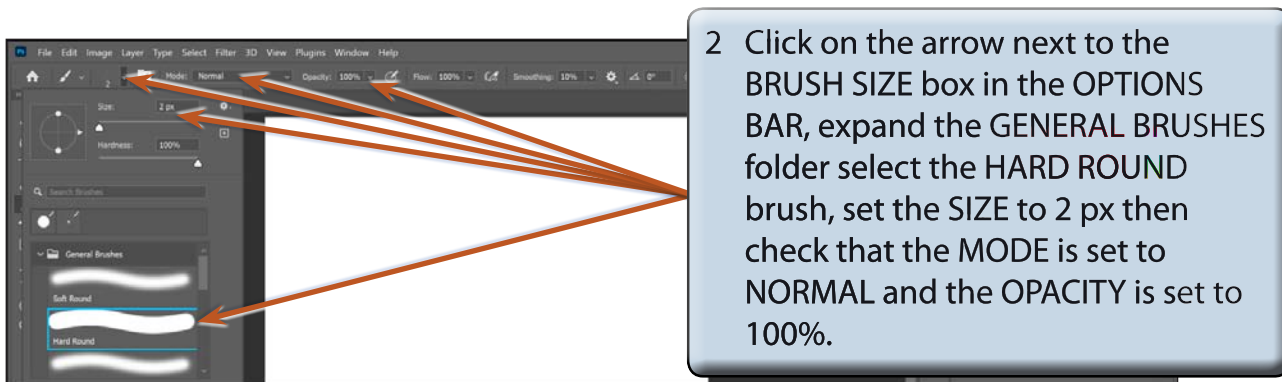
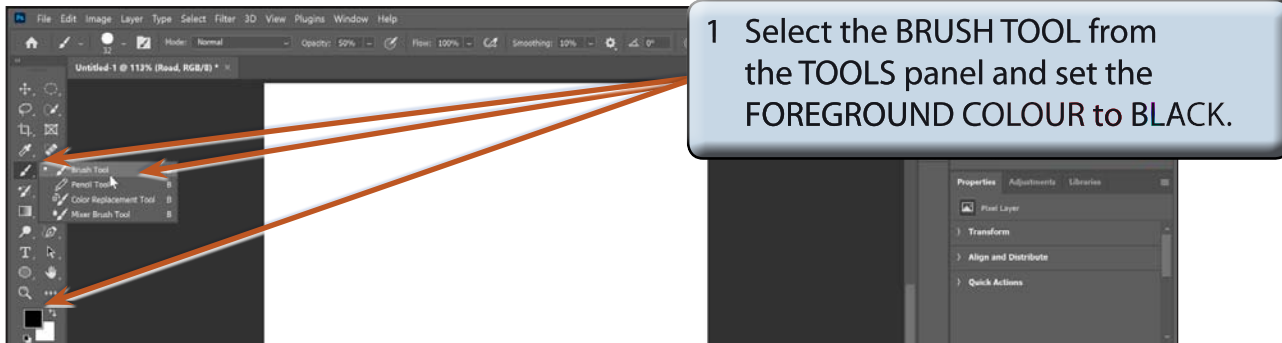
A Naming the First Layer

When you start a new Photoshop document a BACKGROUND layer is created and locked. The layer can be renamed and unlocked.



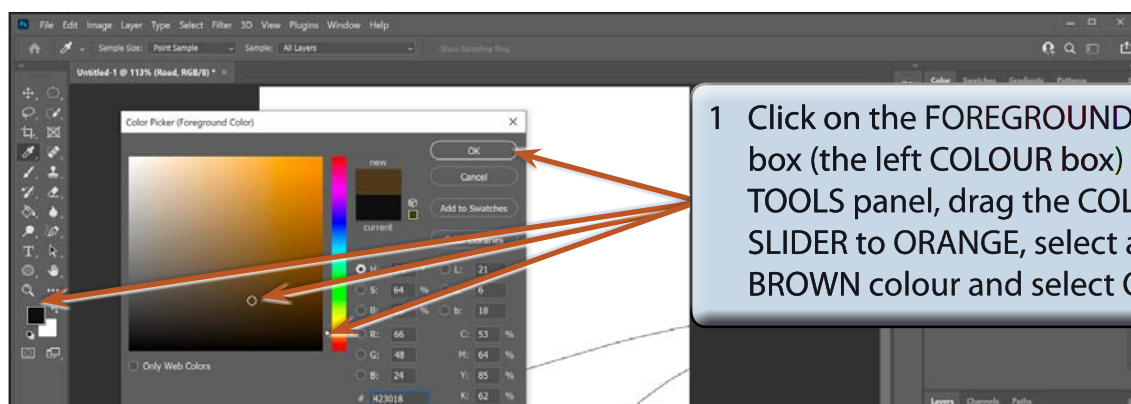
- 3 Renaming the BACKGROUND layer unlocks the layer. You can also unlock a layer by clicking on its lock symbol.

B Creating the Outline of the Road

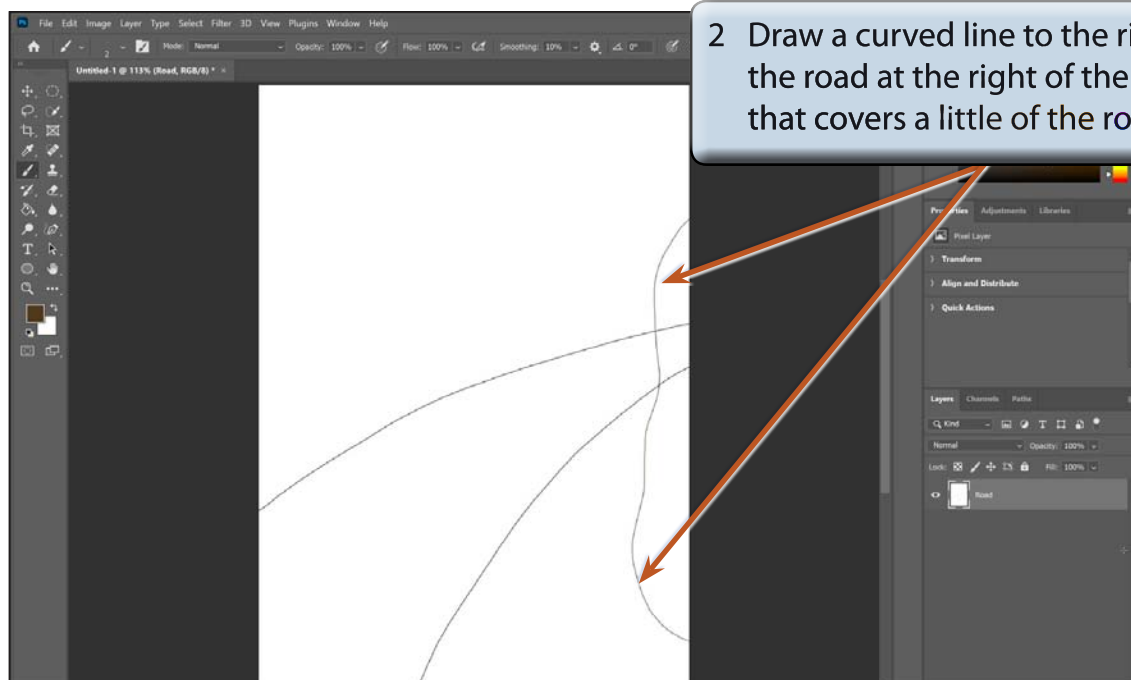


- NOTE:**
- i If you make a mistake with the lines, press **CTRL+Z** or **COMMAND+Z** to undo the line and try again. It may take a few goes to get the lines looking the way you want them to, and you can draw over any gaps.
 - ii You can increase the **SMOOTHING** value in the **OPTIONS BAR** to about **80%** if you have trouble creating smooth lines.

C Creating the Outline of the Hill



- 1 Click on the **FOREGROUND COLOUR** box (the left **COLOUR** box) in the **TOOLS** panel, drag the **COLOUR SLIDER** to **ORANGE**, select a **DARK BROWN** colour and select **OK**.



- 2 Draw a curved line to the right of the road at the right of the canvas that covers a little of the road.