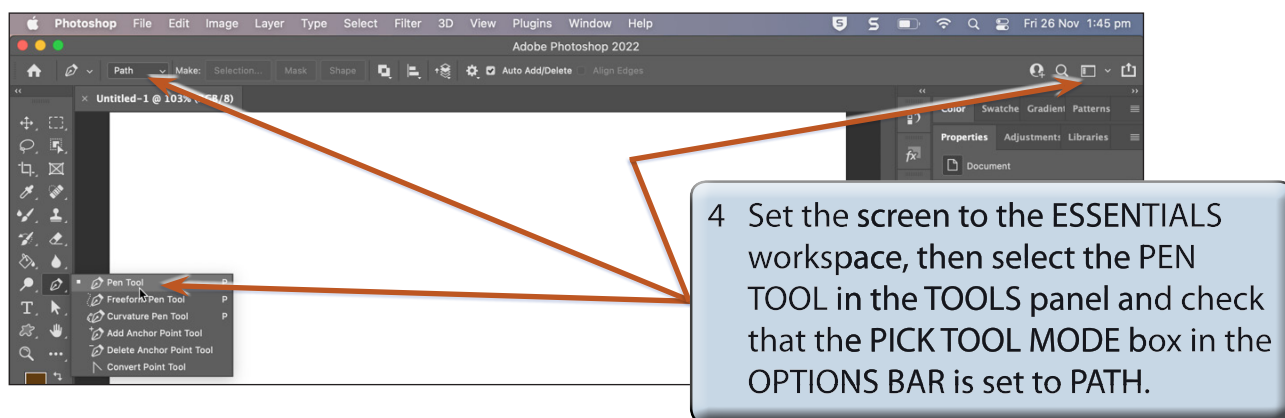
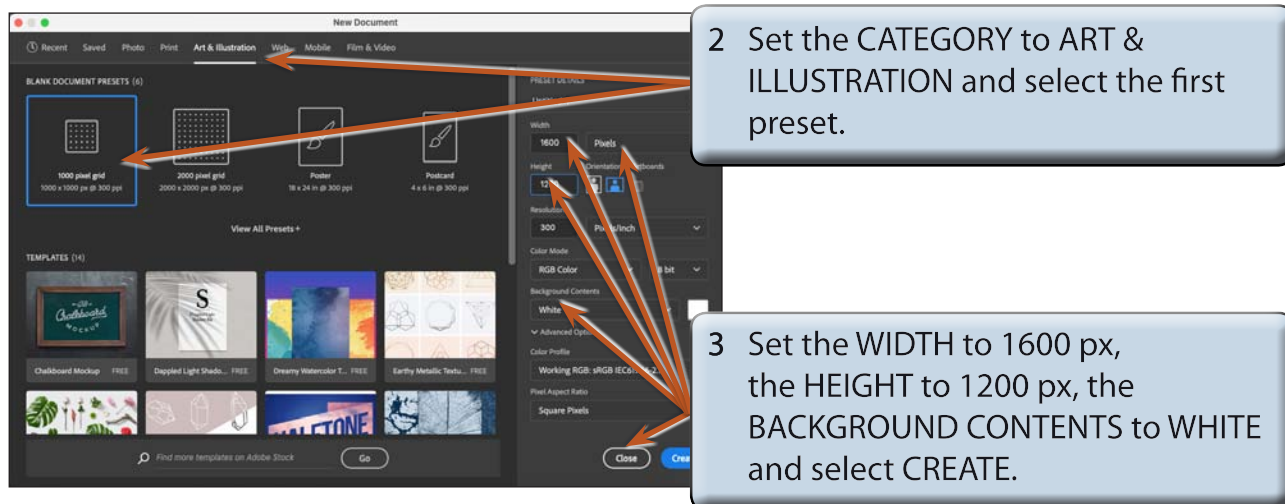


The Pen Tool

The PEN TOOL allows you to create custom vector paths that can be filled, outlined or selected. It is one of Photoshop's more difficult tools to master, but if you intend to use Photoshop to create detailed artwork, it is worth learning how to use it.

Starting a New Document

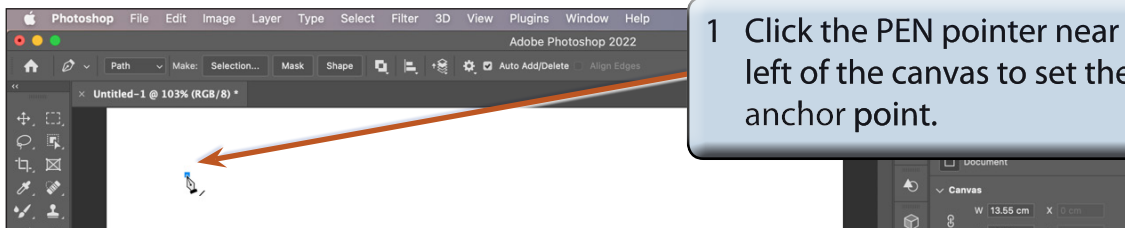
- 1 Load Photoshop or close the current files and select NEW FILE from the WELCOME screen or select NEW from the FILE menu.



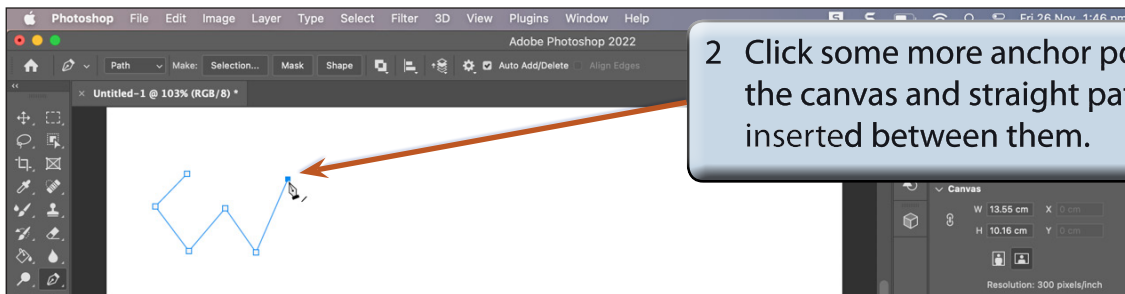
NOTE: If you want the paths created using the PEN TOOL to be filled as they are drawn, set the PICK TOOL MODE box in the OPTIONS BAR to SHAPE.

Drawing Straight Paths

Straight lines or paths are easily created with the PEN TOOL. Points are clicked on the canvas and straight paths are inserted between those points. The points are called ANCHOR POINTS.



1 Click the PEN pointer near the top left of the canvas to set the first anchor point.

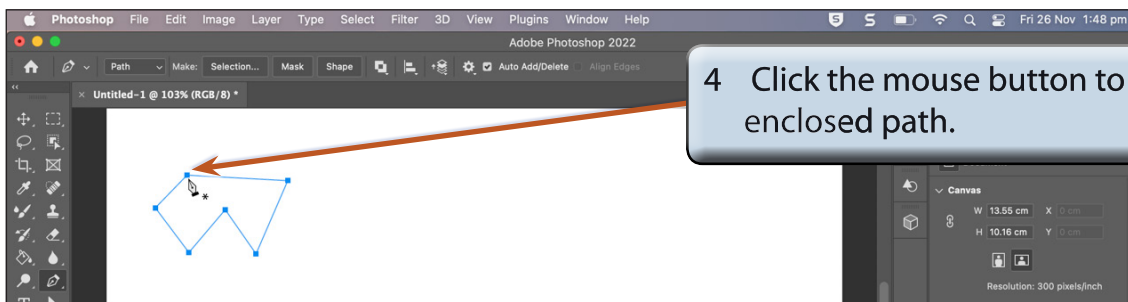


2 Click some more anchor points on the canvas and straight paths are inserted between them.



3 Move the pointer over the first anchor point until a small \circ is added to the pointer.

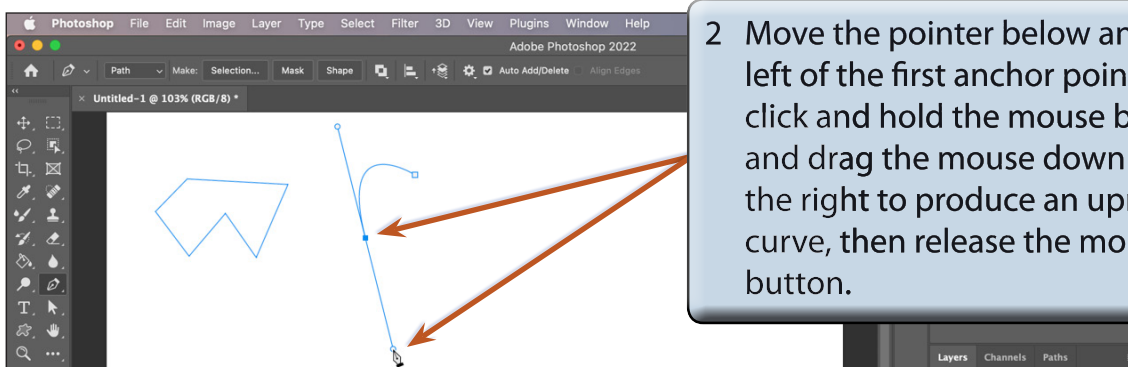
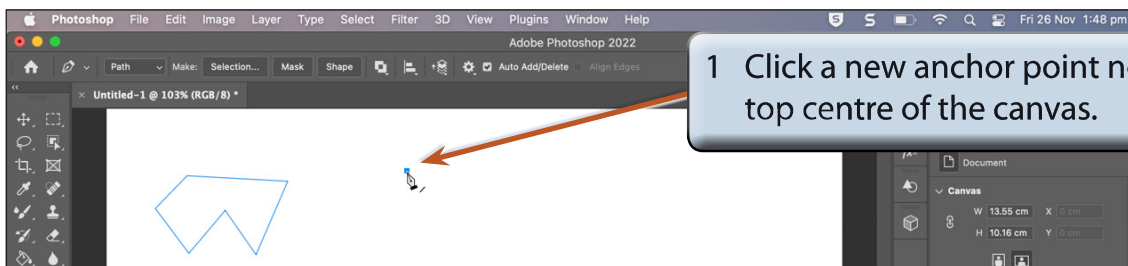
NOTE: The small \circ is added to the PEN pointer when it is exactly over the first anchor point.

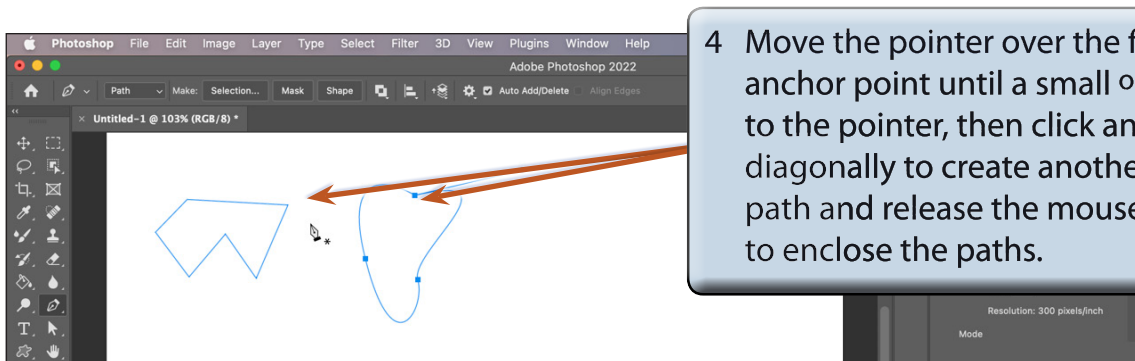
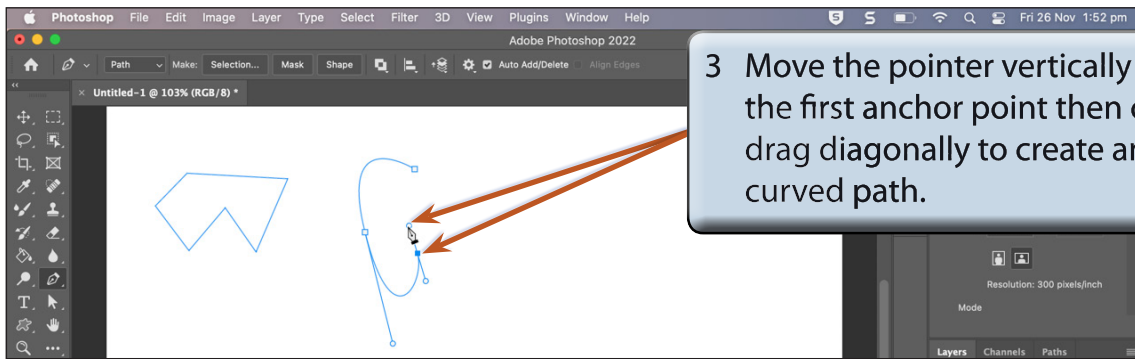


NOTE: If you don't want an enclosed shape, just some open paths, press the ESC key after the last anchor point to set the paths.

Creating Curved Paths

Curved paths are created by clicking and dragging an anchor point. When you do this lines with handles, called Bezier Lines, are added to the anchor point. These Bezier Lines allow you to adjust the curve.





NOTE: You can drag either of the Bezier handles to adjust the curve if you are not happy with it.

Combining Curved and Straight Paths

Curved and straight paths can be combined to create shapes.

