

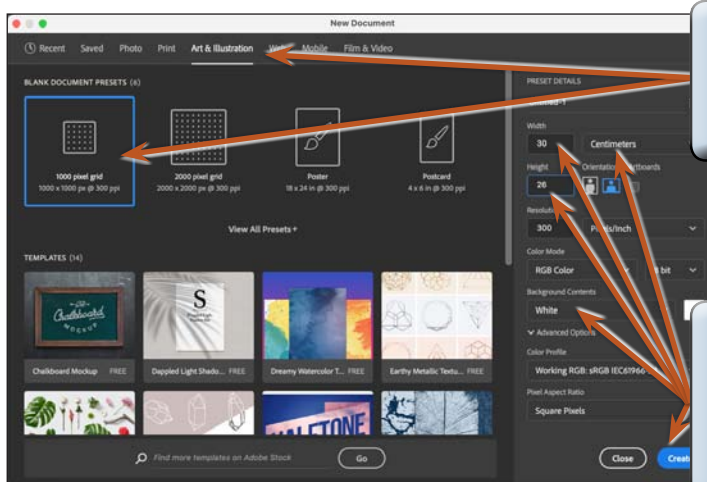
Creating Accurate Shapes

Photoshop provides the tools to create accurate shapes. Let's say that you have been contracted by a software producer, ArtSoft, to produce an image of the box for their recently released graphics program, Splosh Strokes, so that it can be placed on their web site. The following image will be produced:



Starting a New Document

- 1 Load Photoshop or close the current files and select NEW FILE from the WELCOME screen or select NEW from the FILE menu.



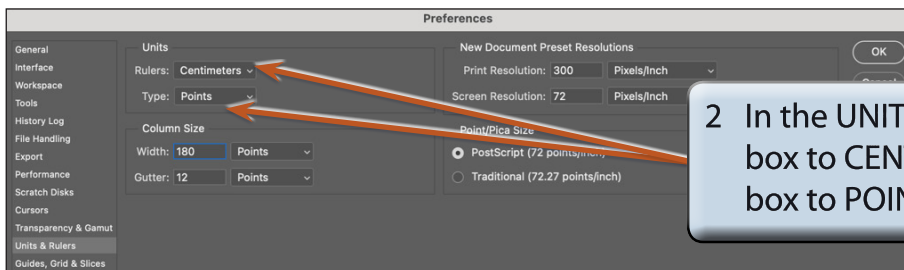
2 Set the CATEGORY to ART & ILLUSTRATION and select the first preset.

3 Set the UNITS to CENTIMETRES, the WIDTH to 30 the HEIGHT to 26, the BACKGROUND CONTENTS to WHITE and select CREATE.

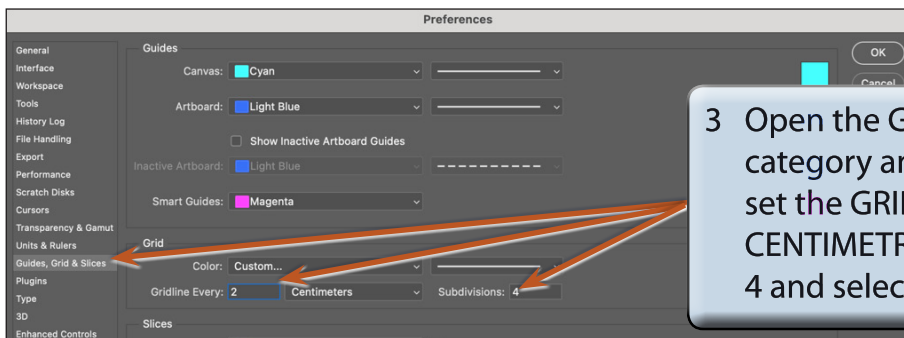
Setting the Ruler and Grid Units

You will be using RULERS and a GRID to accurately create the box, so the settings need to be checked.

- 1 On the Windows system display the EDIT menu, highlight PREFERENCES and select UNITS & RULERS. On the Macintosh system display the PHOTOSHOP menu, highlight PREFERENCES and select UNITS & RULERS.



2 In the UNITS frame set the RULERS box to CENTIMETRES and the TYPE box to POINTS.



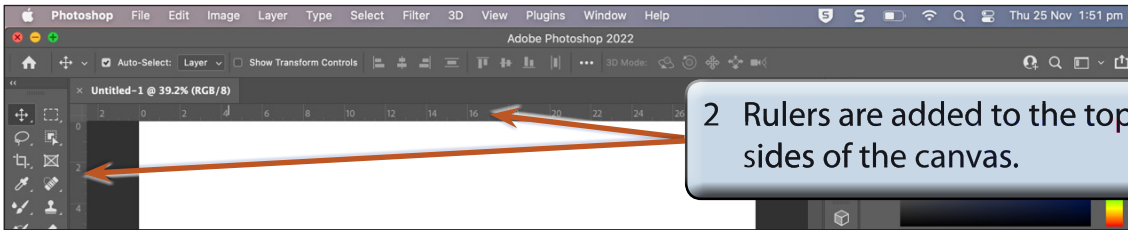
3 Open the GUIDES, GRID & SLICES category and, in the GRID frame, set the GRIDLINE EVERY box to 2 CENTIMETRES, the SUBDIVISIONS to 4 and select OK.

NOTE: You can also use the GUIDES, GRID & SLICES section to set the colour of the grid and guide lines.

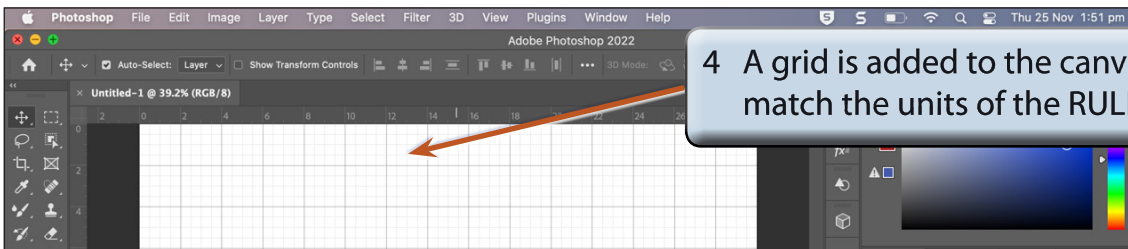
- 4 Set the screen view to FIT ON SCREEN.

Turning on the Rulers and Grid

1 Display the VIEW menu and select RULERS.



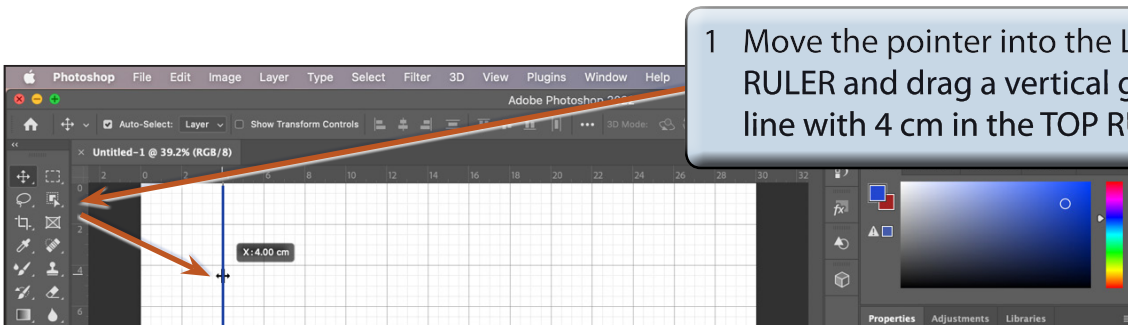
3 Display the VIEW menu again, highlight SHOW and select GRID.

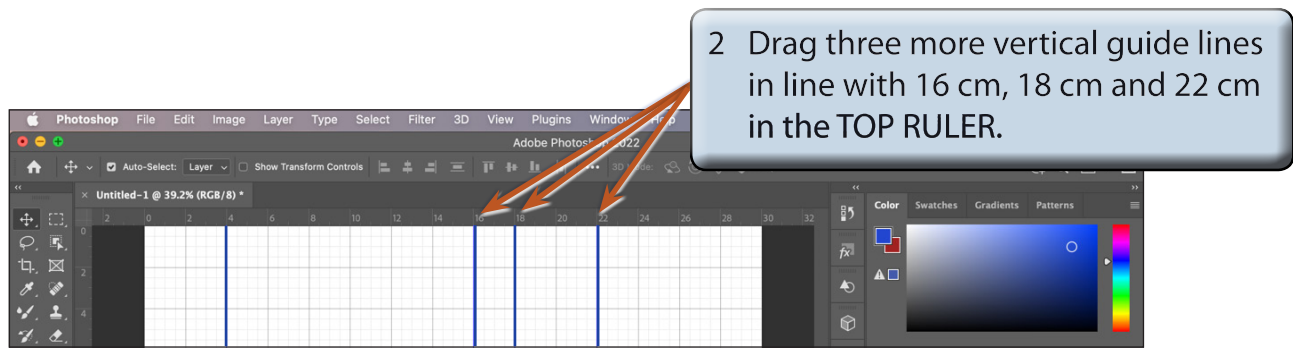


NOTE: You can RIGHT+CLICK or CONTROL+CLICK on the RULERS to quickly change their units

Setting Guide Lines

You can add guide lines to the canvas to help you layout a sketch. In this case guide lines will be needed for the front and side of the box.





NOTE: You can move guide lines to new positions by selecting the **MOVE TOOL**, moving the pointer over the guide line until it changes to parallel lines with arrows and dragging the guide line to a new position. Dragging a guide line back to its **RULER** removes the guide line from the screen.

