

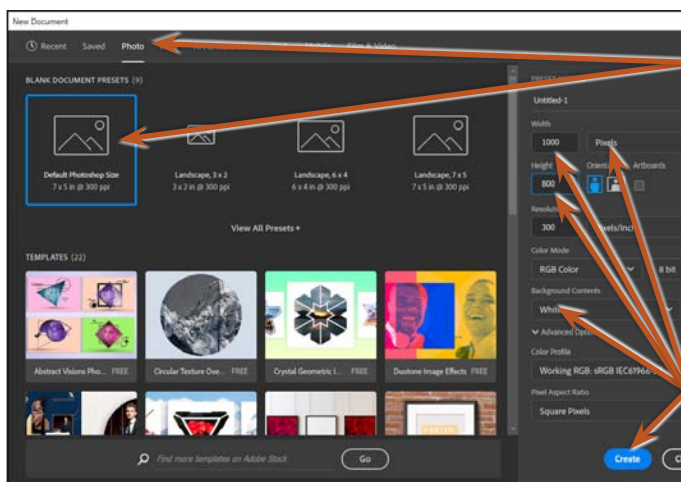
## Graffiti on a Building

Rather than displaying graffiti on a flat surface, you can also display it on a photograph and use the perspective tools to make it look realistic. In this Chapter some graffiti will be added to a building then moved behind the snow and branches as shown in the following diagram.



## Starting a New Document

- 1 Load Photoshop or close the current files then select NEW FILE from the WELCOME screen or select NEW from the FILE menu.

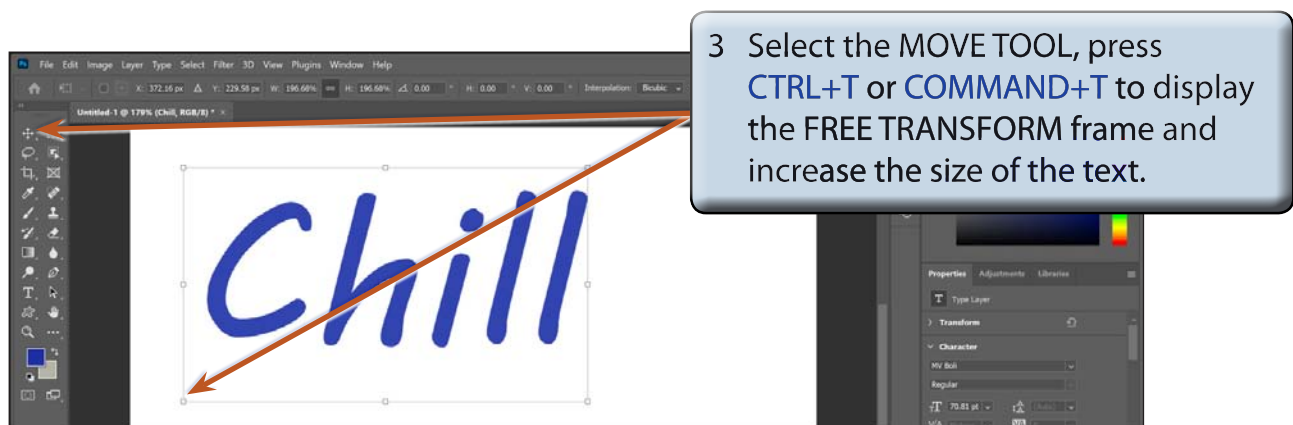
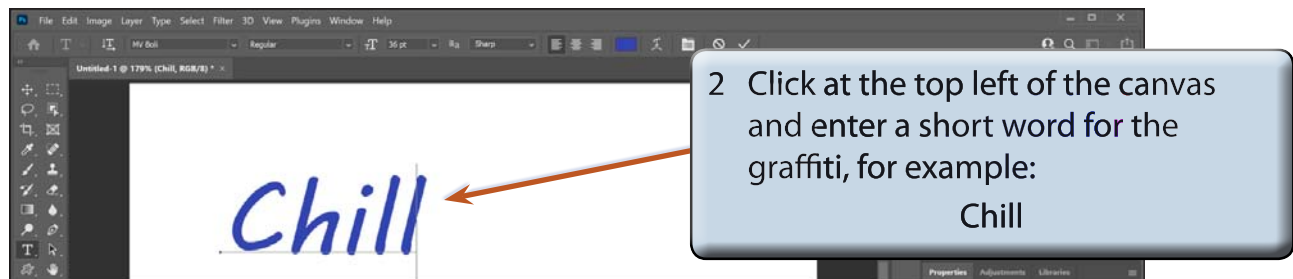
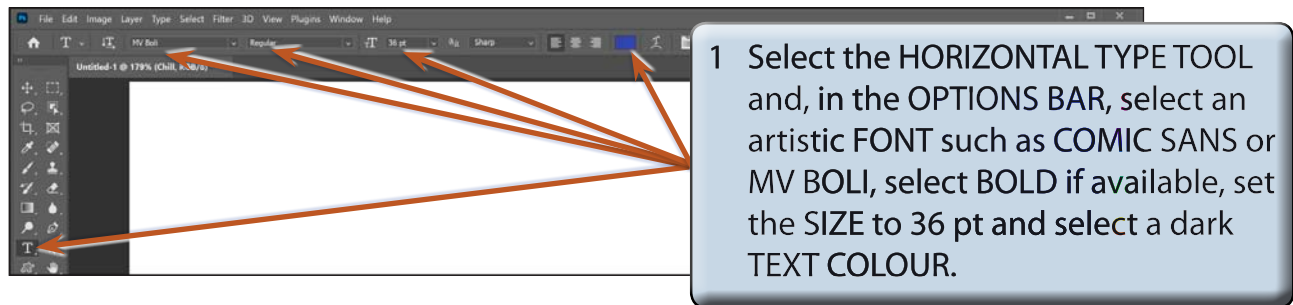


- 2 Set the CATEGORY to PHOTO and select the first preset.

- 3 Set the WIDTH to 1000 px, the HEIGHT to 800 px, the COLOUR MODE to RGB COLOUR, the BACKGROUND CONTENTS to WHITE and select CREATE.

## Entering Some Text

Some text will be entered and the WARP transformation used to distort it.

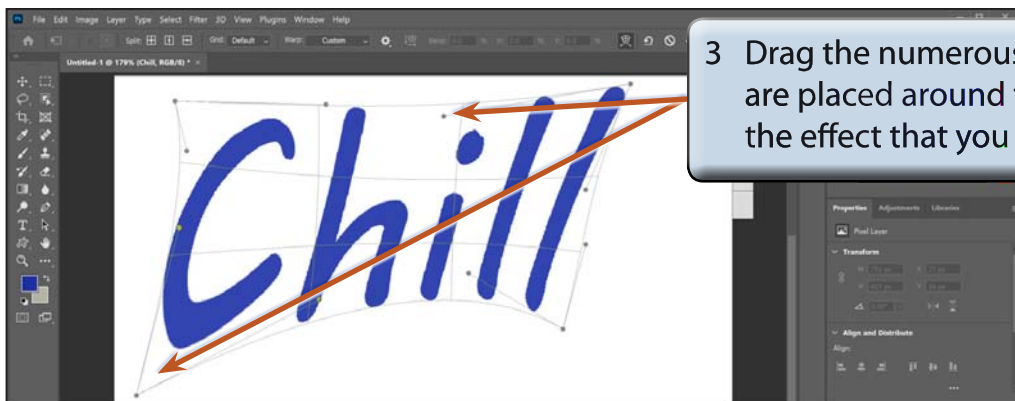


4 Press **<enter>** or **<return>** to accept the transformation.

## Warping the Text

Rather than using the LIQUIFY filter to create the graffiti text, you can WARP the text. To do this the text must be rasterized (converted to an image).

- 1 Display the LAYER menu, highlight RASTERIZE and select LAYER.
- 2 Display the EDIT menu, highlight TRANSFORM and select WARP.



- 4 Press <enter> or <return> to accept the transformation.

**NOTE: No effects will be applied to the text at this stage. The text will be made to look like graffiti once it has been added to the photo.**

- 5 Save the document in your STORAGE folder as a PHOTOSHOP file under the file name:

Warped Text

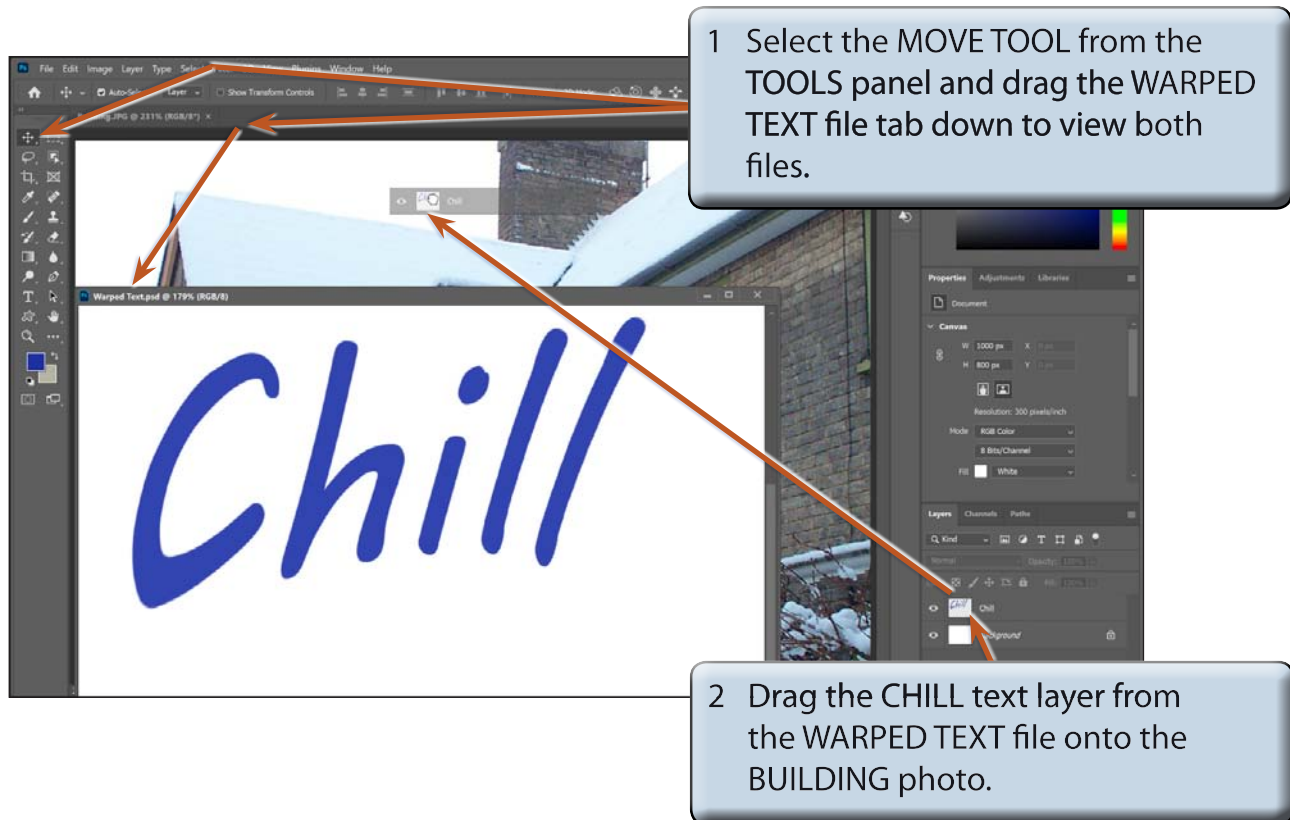
## Loading the Photograph

A photo of a house has been prepared for you and the graffiti text will be placed on one of its walls.

- 1 Display the FILE menu and select OPEN.
- 2 Access the PScC SUPPORT FILES, open the CHAPTER 31 folder, open the BUILDING photo and set the view to FIT ON SCREEN.
- 3 The graffiti will be added below the right window.

## Inserting the Warped Text

The warped text needs to be added to the BUILDING file.



**NOTE: Select OK if you receive a message about converting colours.**

3 Close the WARPED TEXT file.