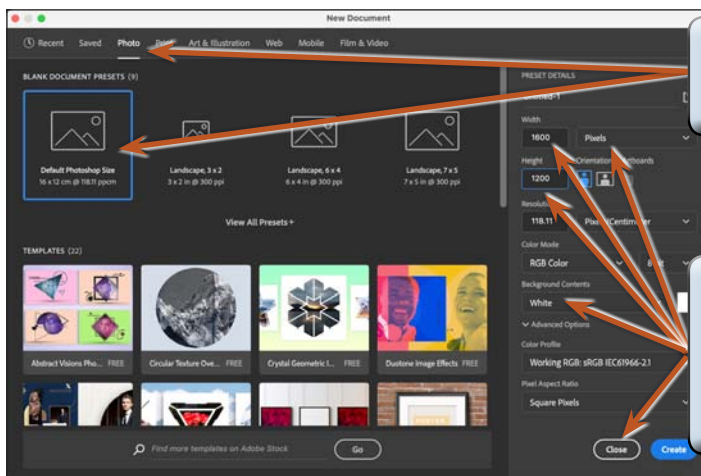


The Curvature Pen Tool

The CURVATURE PEN TOOL is basically a simplified PEN TOOL for those people who find the PEN TOOL difficult or annoying. The use of the PEN TOOL will be covered in Module 3. The CURVATURE PEN TOOL is not quite as powerful as the PEN TOOL, but it does allow you to create detailed drawings.

Starting a New Document

- 1 Load Photoshop or close the current files and select NEW FILE from the WELCOME screen or select NEW from the FILE menu.

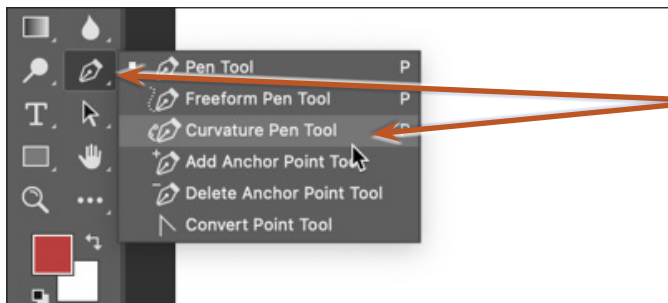


- 2 Set the CATEGORY to PHOTO and select the first preset.

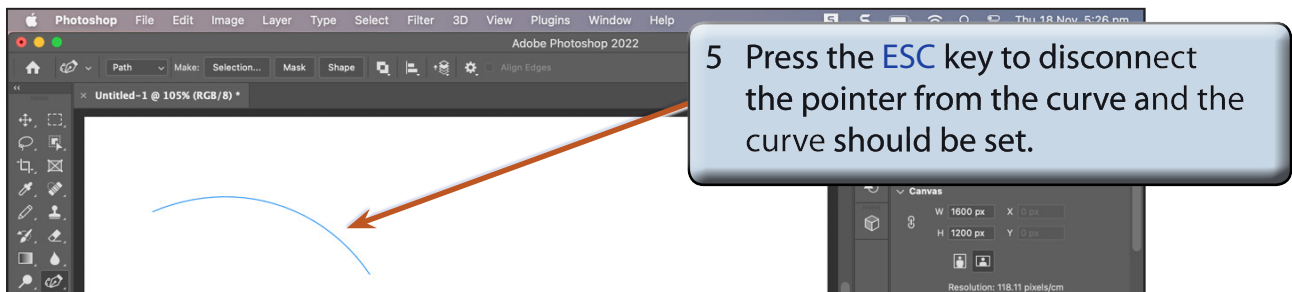
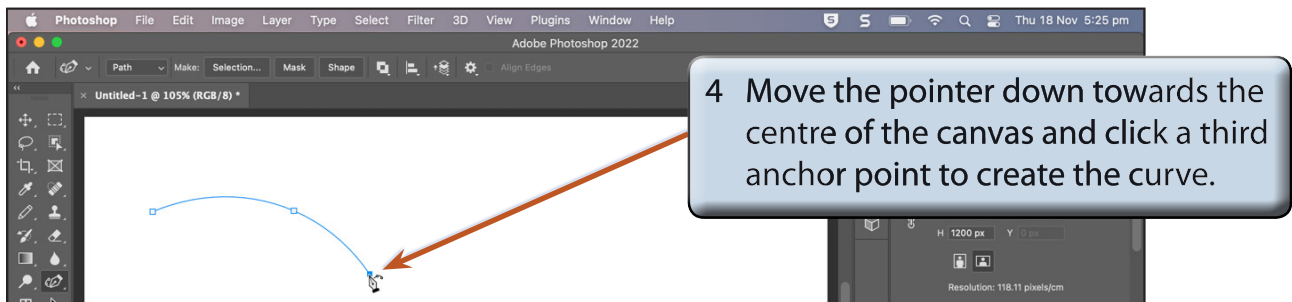
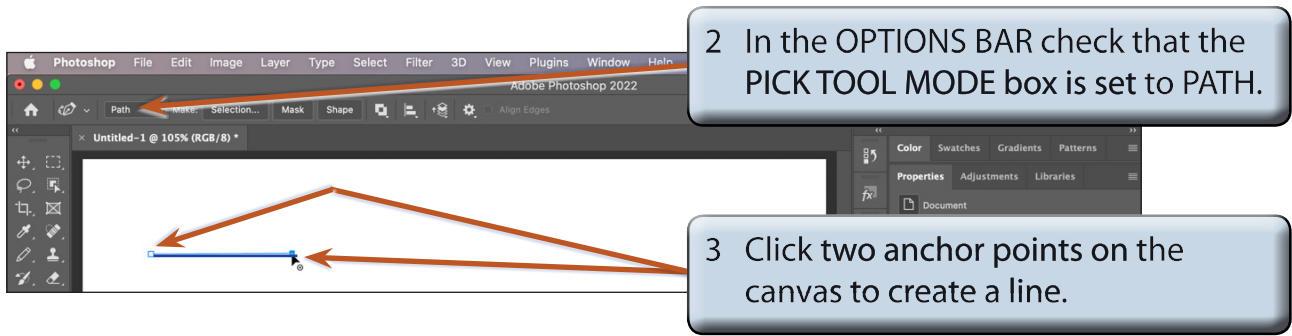
- 3 Set the WIDTH to 1600 px, the HEIGHT to 1200 px, the BACKGROUND CONTENTS to WHITE and select CREATE.

Drawing Simple Curves

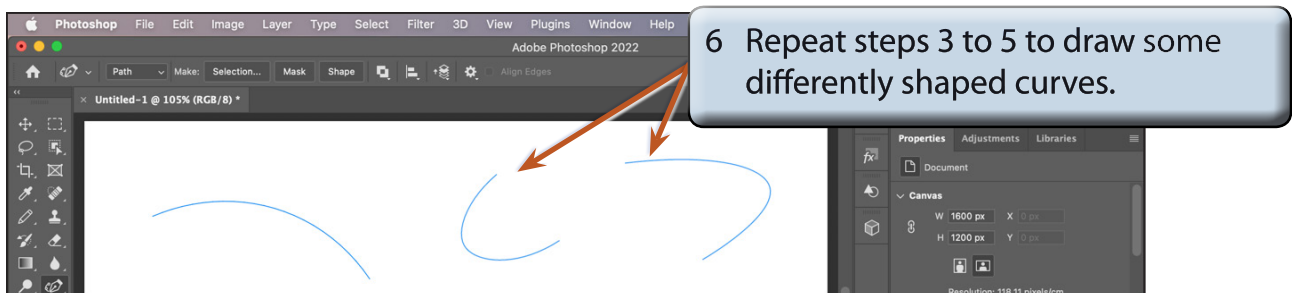
As the name suggests the CURVATURE PEN TOOL is used to create curves, but it can also be used to create straight paths. You click 3 anchor points to create the curve.



- 1 Select the CURVATURE PEN TOOL from the TOOLS panel. It is within the PEN TOOL.



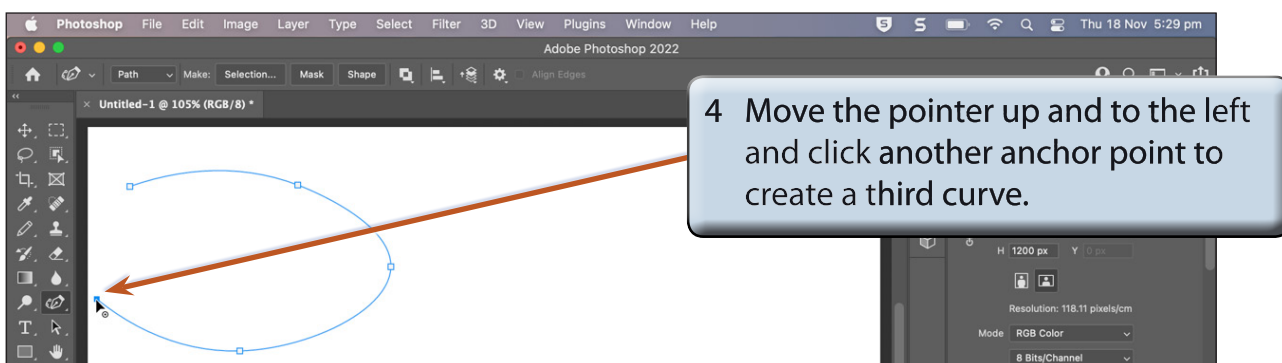
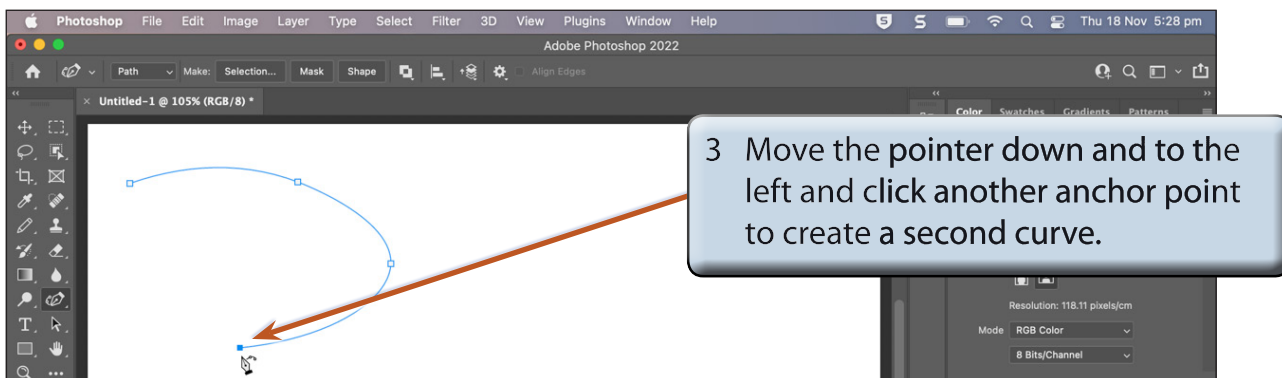
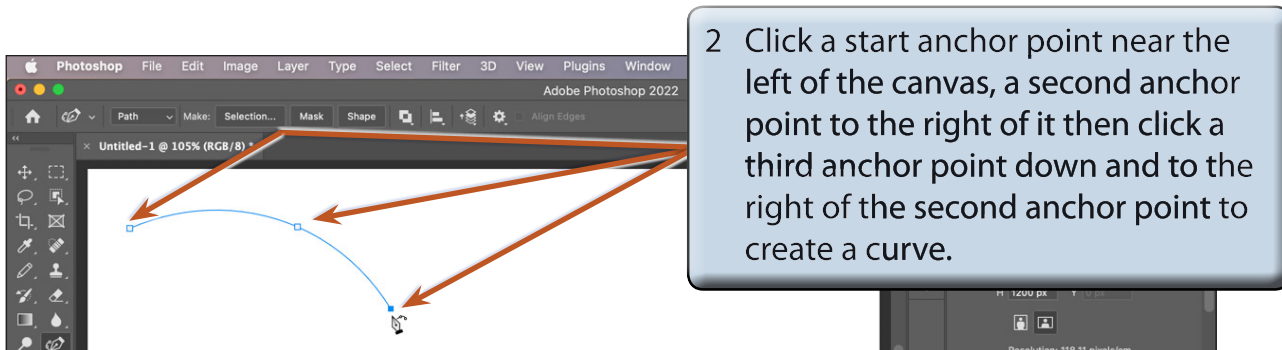
NOTE: In general you click the second anchor point part of the way along where you want the curve to finish, then click the third anchor point at the end to create the curve.

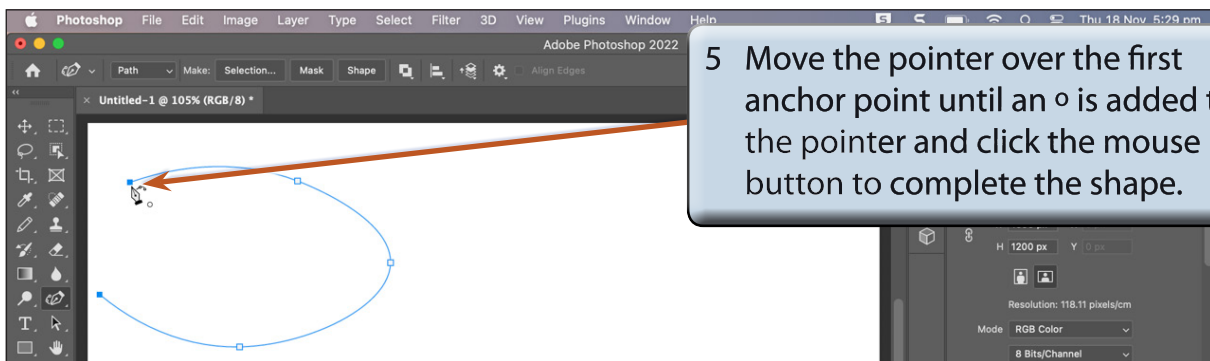


Combining Curves into Shapes

You are not limited to one curve. You can continue clicking anchor points to create shapes. To illustrate this, a rough oval shape will be drawn.

- 1 Press **CTRL+Z** or **COMMAND+Z** until all the curves are undone.

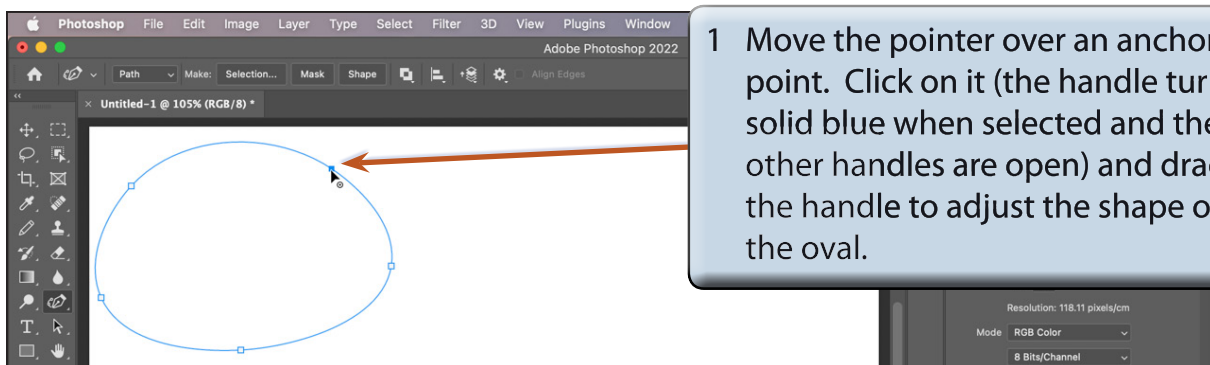




5 Move the pointer over the first anchor point until an o is added to the pointer and click the mouse button to complete the shape.

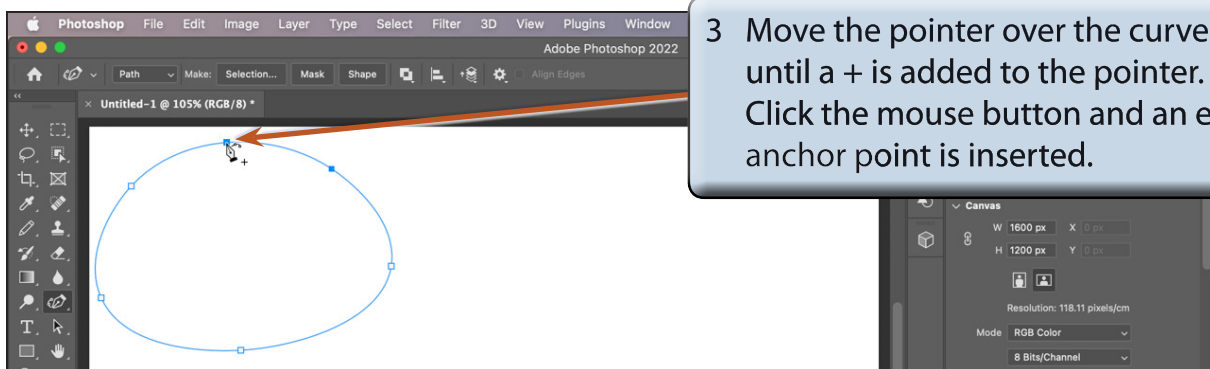
Editing Curves

Shapes produced using the CURVATURE PEN TOOL are live and anchor point positions can be altered or new anchor points added to the curve.



1 Move the pointer over an anchor point. Click on it (the handle turns solid blue when selected and the other handles are open) and drag the handle to adjust the shape of the oval.

2 Adding extra anchor points can help refine the shape.



3 Move the pointer over the curve until a + is added to the pointer. Click the mouse button and an extra anchor point is inserted.