

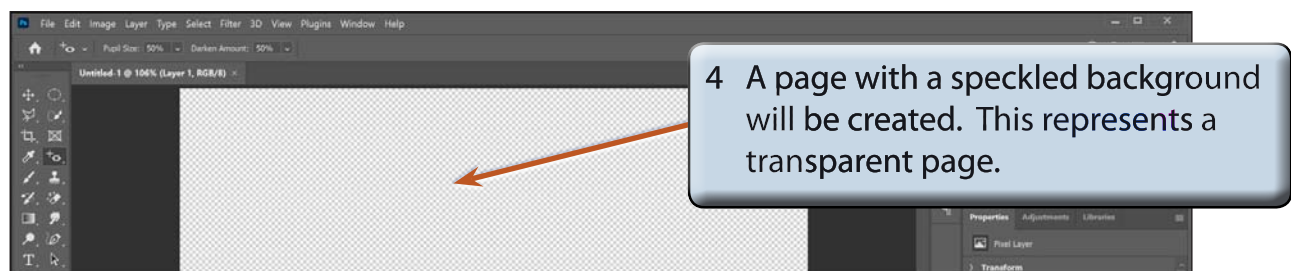
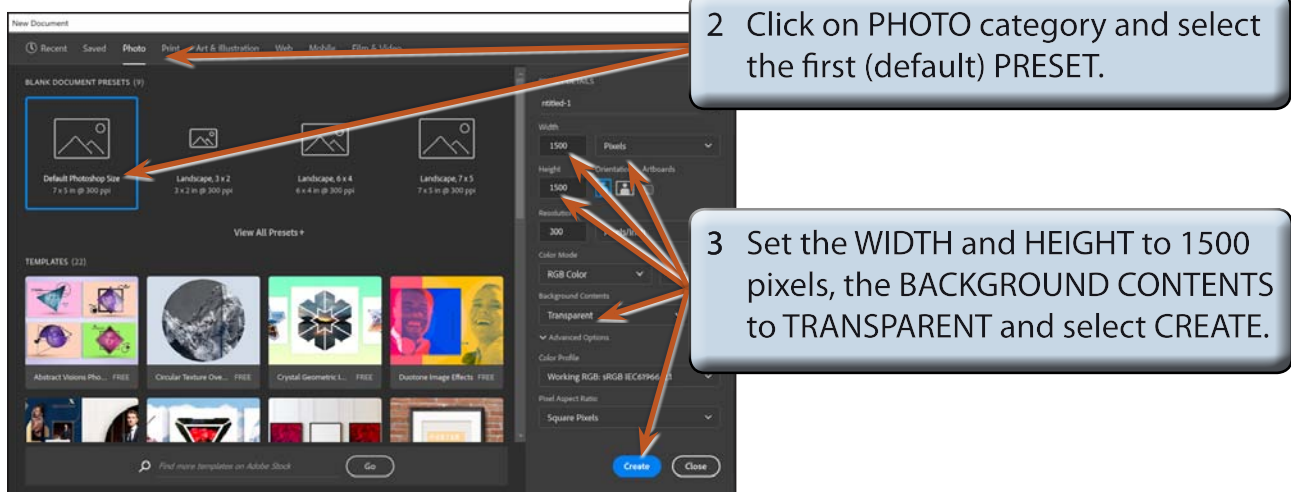
Creating Clipping Masks

In this chapter you will use layers to create masks. Masks are covers that you place over things. In Photoshop you can show parts of photos or images through a clipping mask placed over the image.

Creating a Transparent Layer

Layers can be set to have different types of backgrounds. One with a white background, one with a coloured background and another with a transparent (or clear) background. In this case a transparent layer will be used.

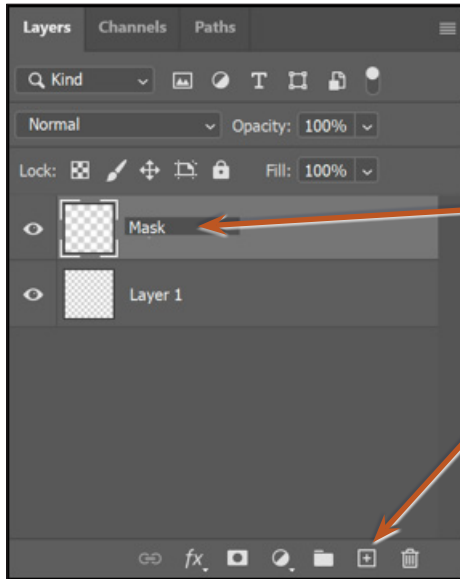
- 1 Load Photoshop or close the current files and select NEW FILE from the WELCOME screen or select NEW from the FILE menu.



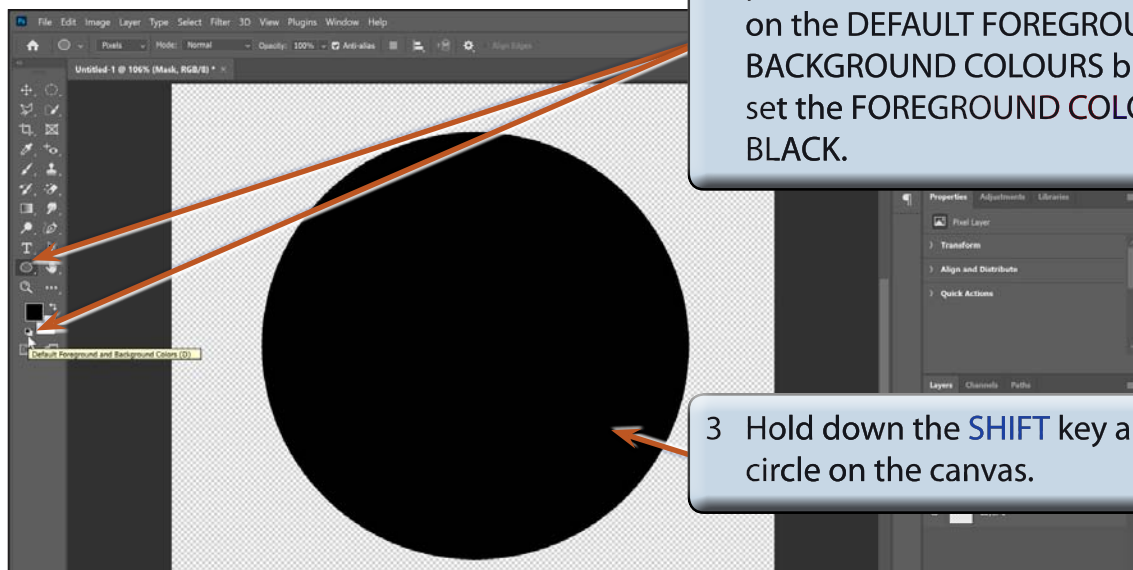
- 5 Press **CTRL+0** or **COMMAND+0** to set the view to FIT ON SCREEN.

Drawing the Mask Shape

The ELLIPSE TOOL will be used to draw a circle on the canvas. This will be filled and become a window (or mask) to view pictures through.



1 In the LAYERS panel click on the CREATE A NEW LAYER icon and call the new layer:
Mask



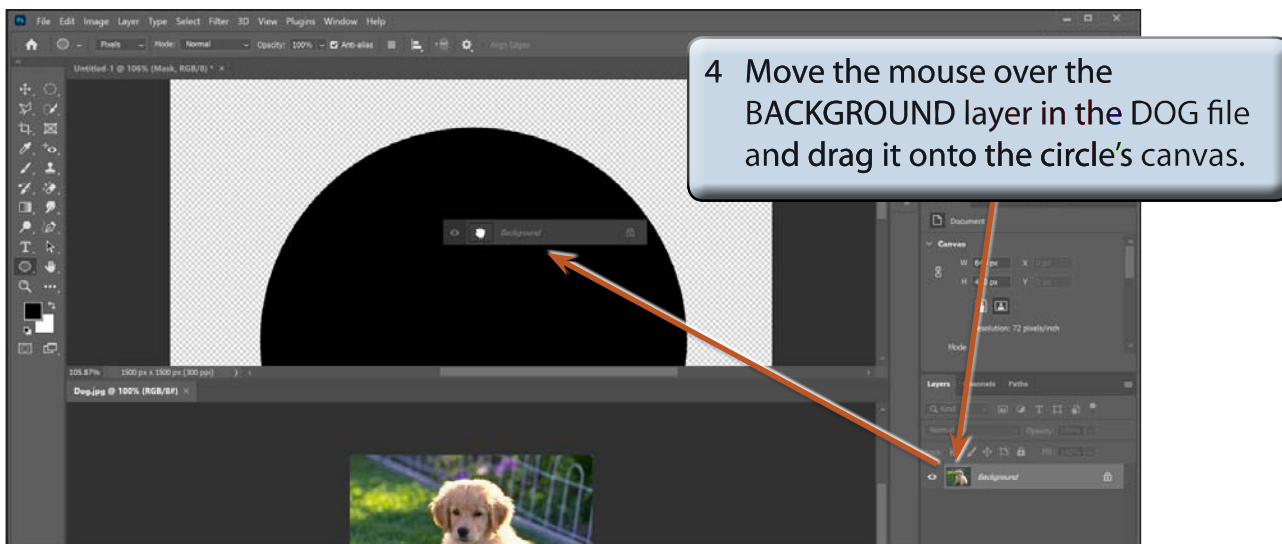
2 Set the SHAPES TOOL in the TOOLS panel to the ELLIPSE TOOL and click on the DEFAULT FOREGROUND AND BACKGROUND COLOURS button to set the FOREGROUND COLOUR to BLACK.

3 Hold down the **SHIFT** key and drag a circle on the canvas.

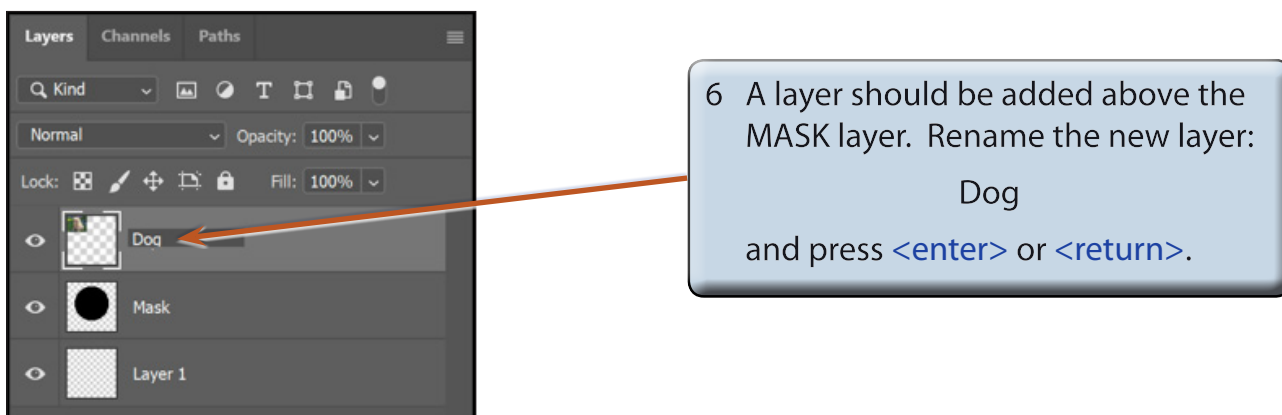
Adding a Background File

A picture of a dog will be used as the background image.

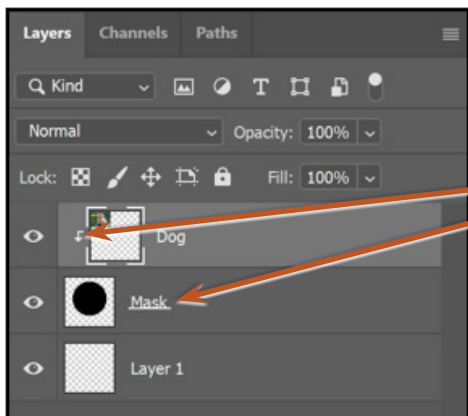
- 1 Display the FILE menu and select OPEN.
- 2 Access the PScC SUPPORT FILES, open the CHAPTER 10 folder and open the DOG file.
- 3 Display the WINDOW menu, highlight ARRANGE and select TILE ALL HORIZONTALLY to place the files above and below each other.



- 5 Close the DOG file by clicking on its CLOSE BOX or by selecting CLOSE from the FILE menu and press **CTRL+0** or **COMMAND+0** to resize the first file.

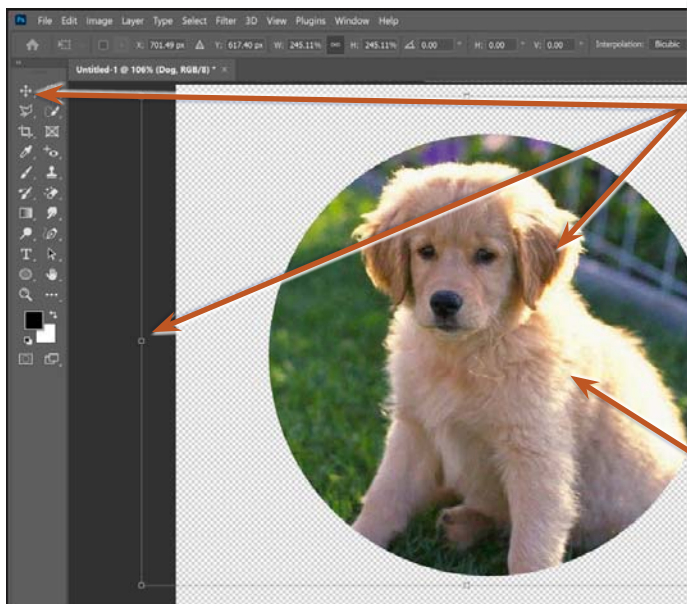


- 7 With the DOG layer selected in the LAYERS panel, display the LAYER menu and select CREATE CLIPPING MASK to combine the DOG layer with the MASK layer.



8 An arrow is added to the DOG layer and it is indented to indicate that it is combined with the MASK layer. The MASK layer label is underlined to indicate that it is the host layer.

NOTE: You can also hold down the ALT or OPTION key and click on the border between the DOG and MASK layers to create the mask.



9 Use the MOVE TOOL to move the dog into to circle then press **CTRL+T** or **COMMAND+T** to select FREE TRANSFORM and use the 'handles' to adjust the size of the dog.

10 You can now see part of the dog through the FOREGROUND layer. The background can only be seen where pixels have been drawn in the transparent layer.

- 11 Press **<enter>** or **<return>** to accept the transformation.