

Animation Effects

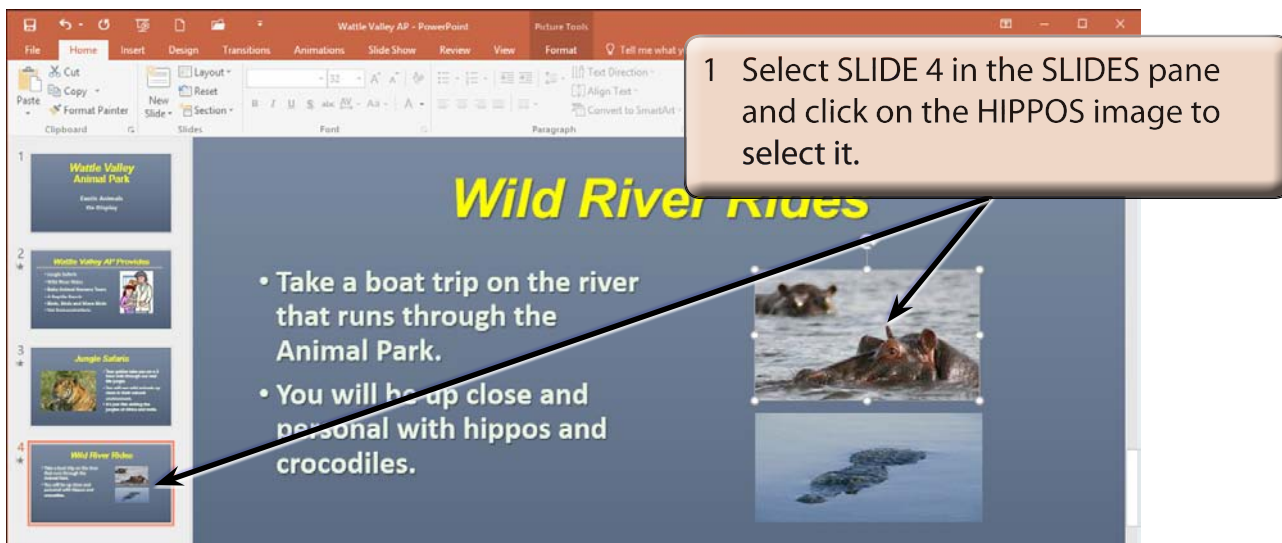
You can enhance the appearance of slides through the use of animation effects. For example, you can make text fly onto the screen one point at a time, dim it after it has been viewed, make graphics move around the screen or fade in and out, and add sounds to objects.

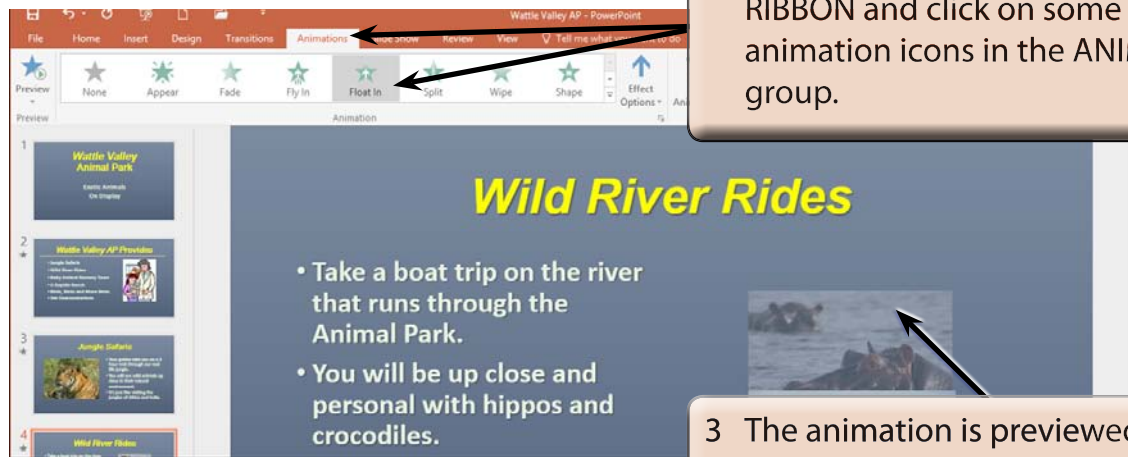
Loading the Presentation

- 1 Load Microsoft PowerPoint or close the current presentation and click on the FILE tab.
- 2 Click on OPEN OTHER PRESENTATIONS in the START window or OPEN in the BACKSTAGE VIEW.
- 3 Browse to your STORAGE folder and open the WATTLE VALLEY AP file.

Adding Animation Effects

You can quickly apply effects to placeholders to animate their contents.



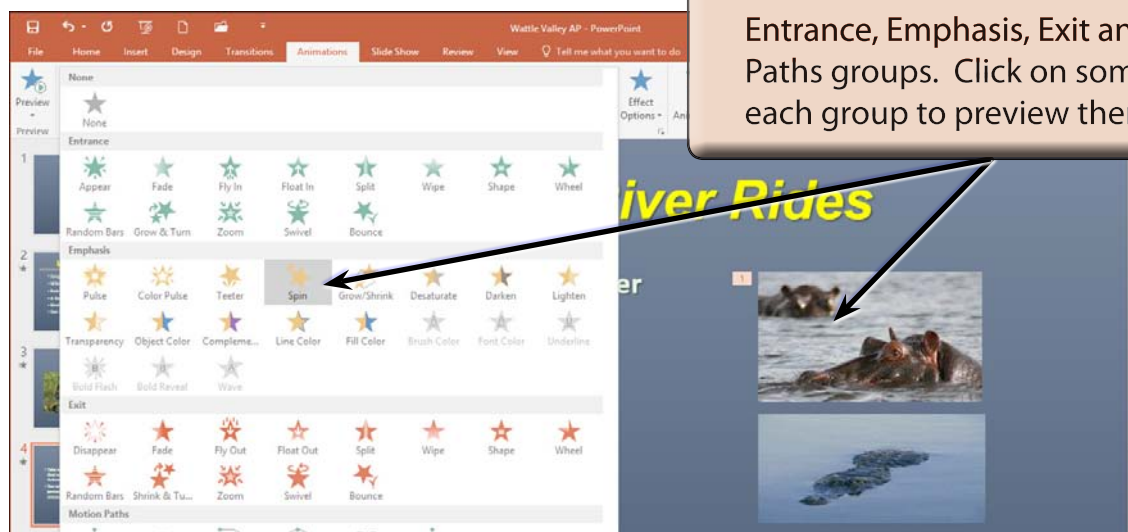


2 Open the ANIMATIONS tab of the RIBBON and click on some of the animation icons in the ANIMATION group.

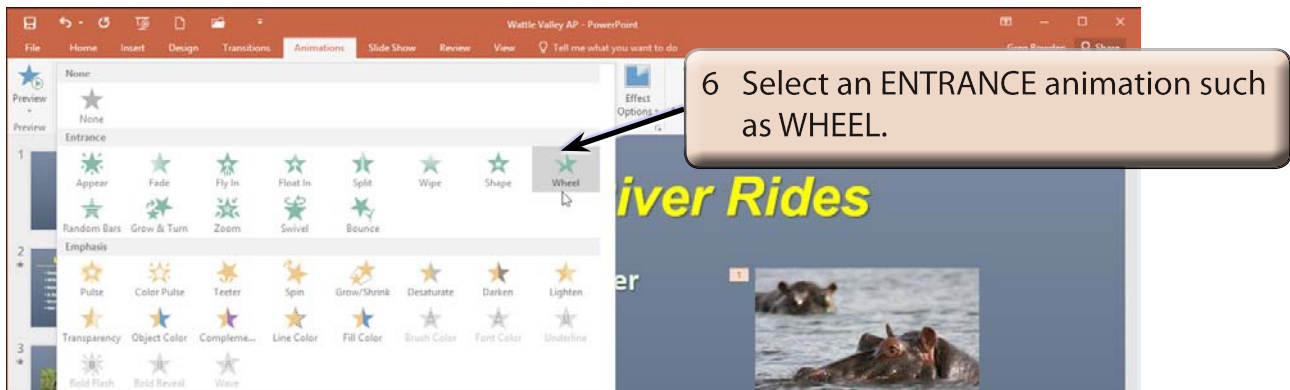
3 The animation is previewed on the HIIPPOS placeholder each time.



4 Click on the MORE icon at the bottom right of the ANIMATION group to see more animations.

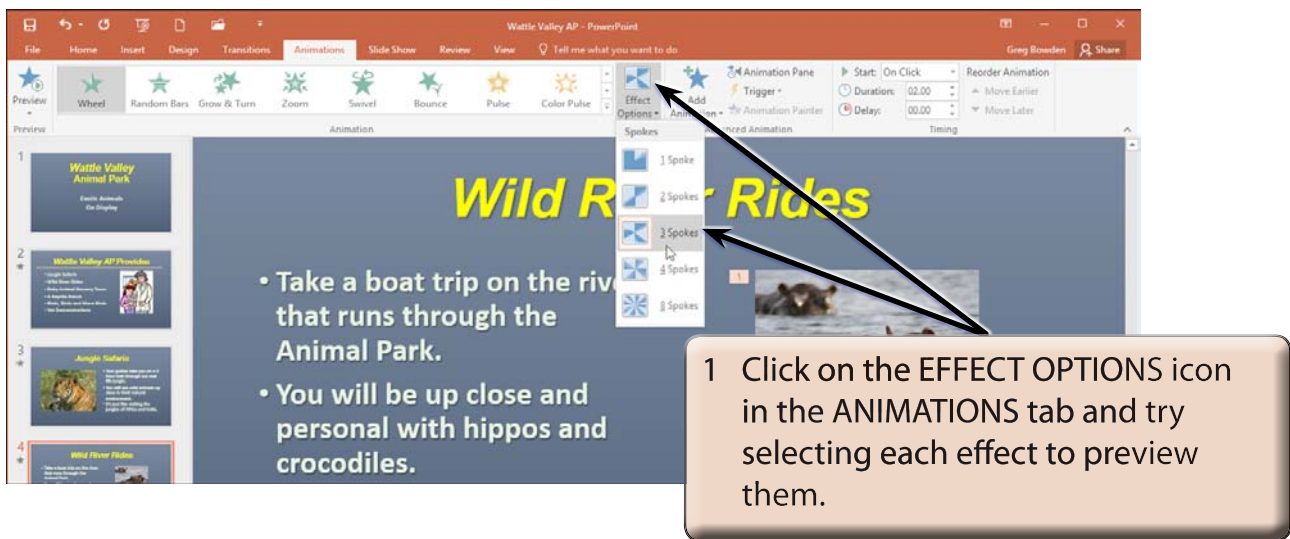


5 The animations are divided into Entrance, Emphasis, Exit and Motion Paths groups. Click on some from each group to preview them.



Effect Options

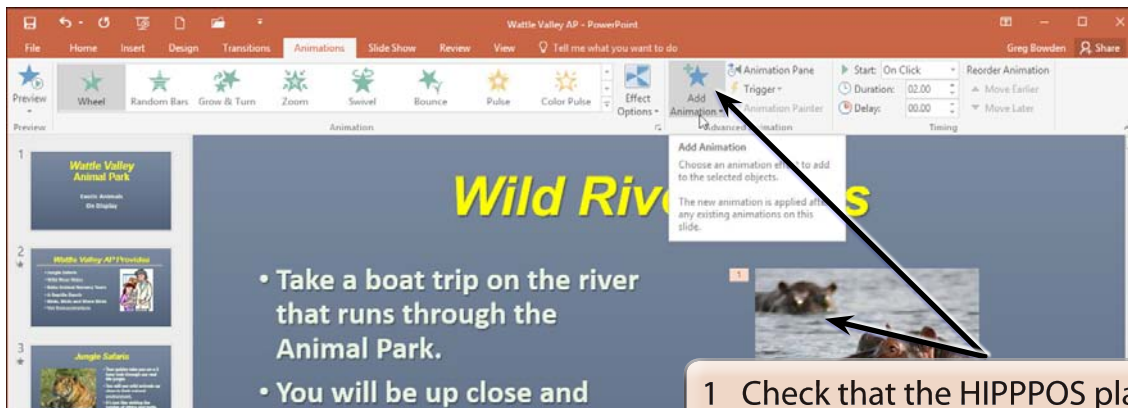
Most effects have a series of options that can be applied to them. These effects vary for different animations.



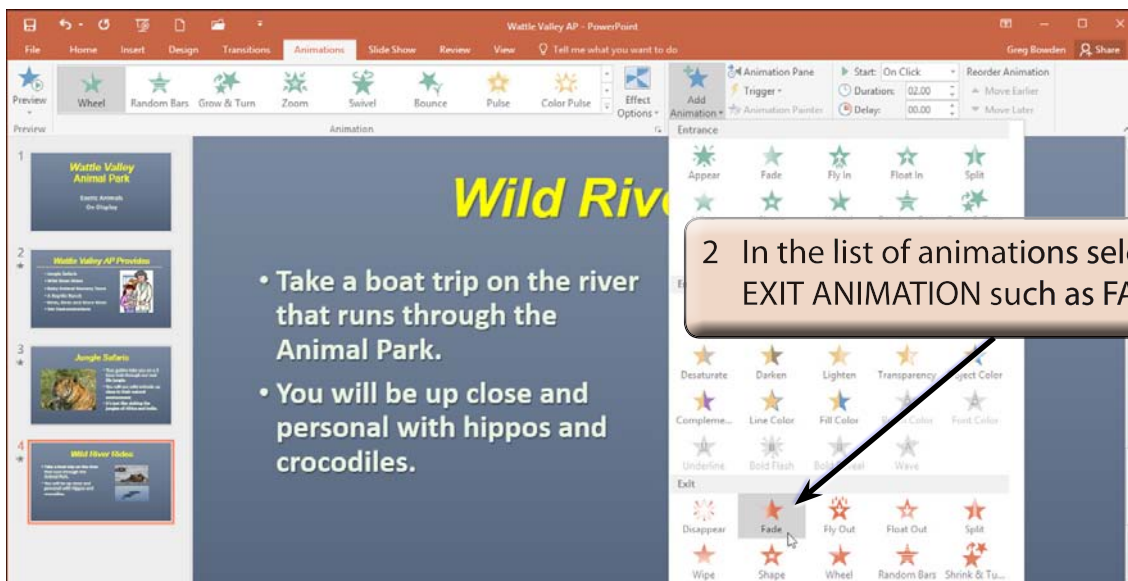
2 Select an effect that you like.

Adding Animation Effects

You can apply more than one animation effect to a placeholder. Additional animations play in the order that you apply them. Let's add an exit animation to the HIPPOS placeholder.



1 Check that the HIPPPPOS placeholder is selected then click on the ADD ANIMATION icon in the ANIMATIONS tab of the RIBBON.



2 In the list of animations select an EXIT ANIMATION such as FADE.

NOTE: Exit animations are usually set to operate at the end of a slide.