

Animation Effects

You can enhance the appearance of slides through the use of animation effects. For example, you can make text fly onto the screen one point at a time, dim it after it has been viewed, make graphics move around the screen or fade in and out, and add sounds to objects.

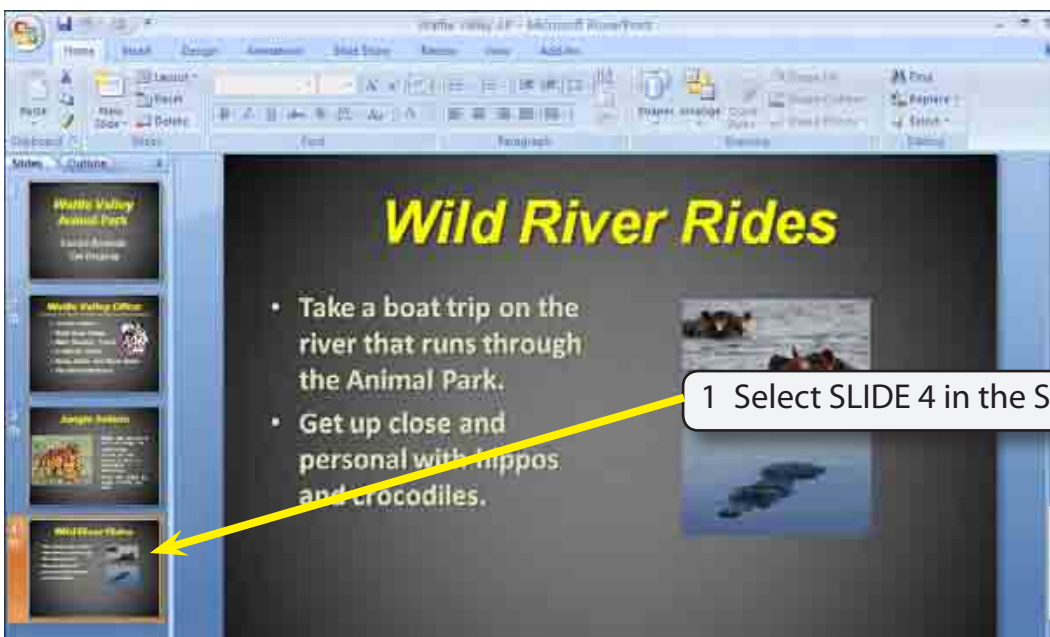
Loading the Presentation

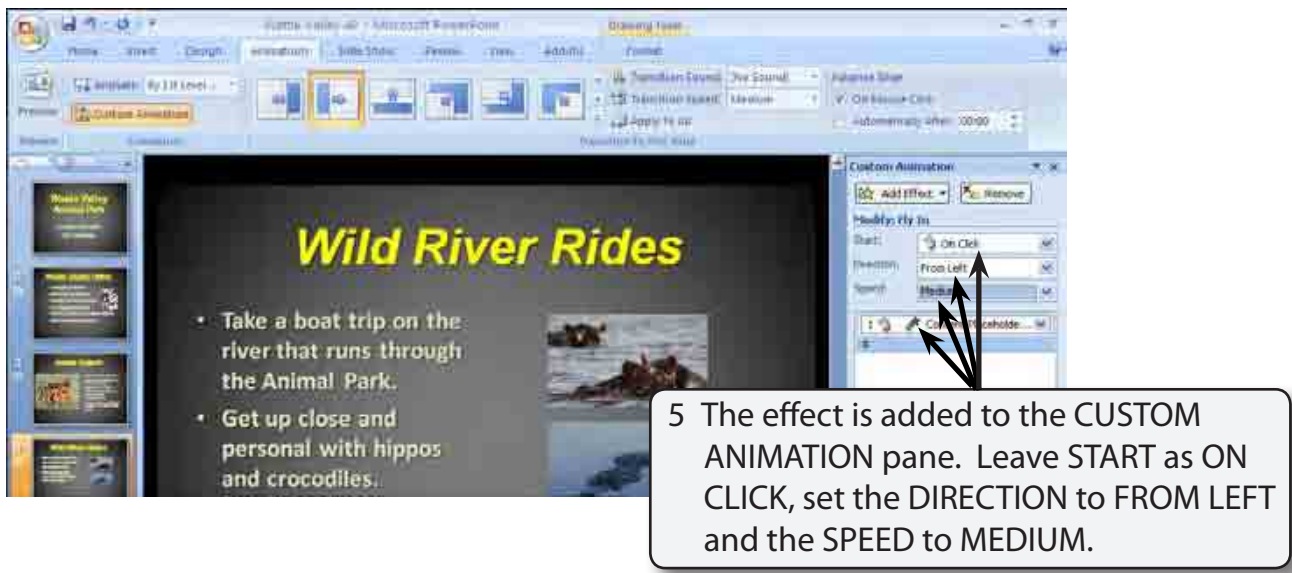
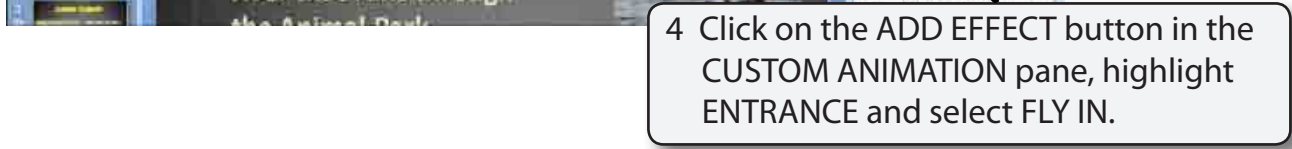
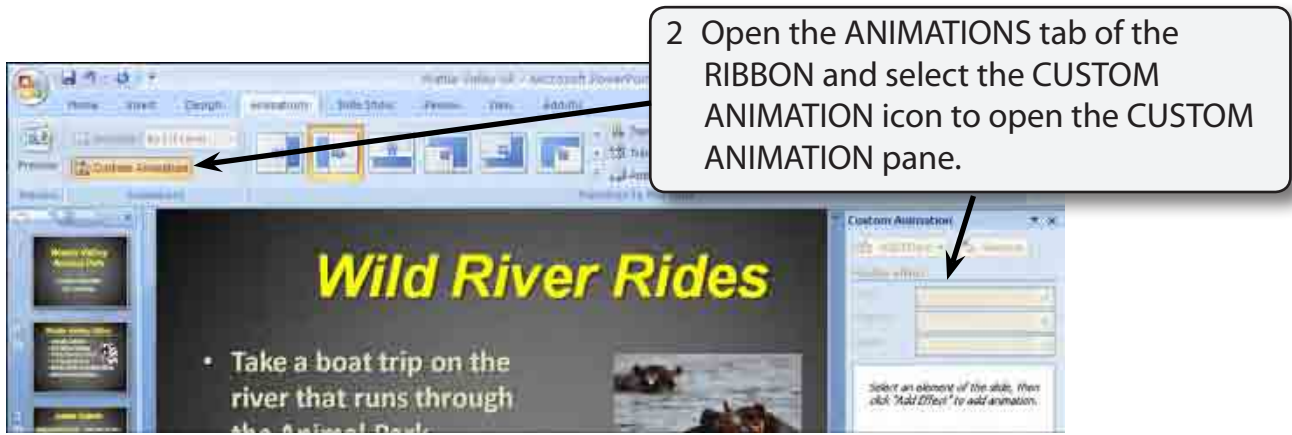
- 1 Load Microsoft PowerPoint or close the current presentation.
- 2 Click on the OFFICE BUTTON and select OPEN.
- 3 Access your STORAGE folder and open the WATTLE VALLEY AP file.

Animating Text

A Text Entrance

You can apply effects that allow text to animate as it enters the slide.

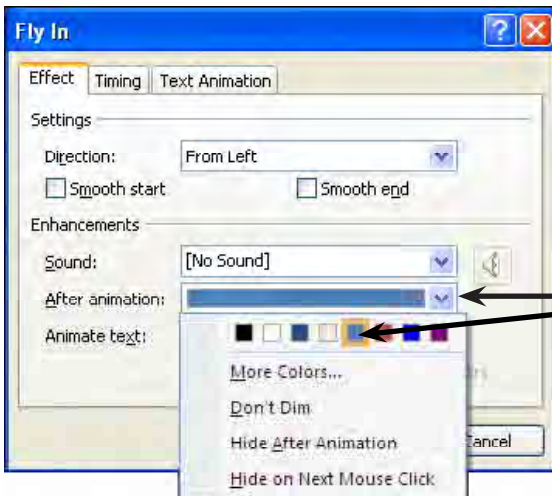






6 Numbers are added to each text point and each can be animated individually.

7 Click on the arrow next to the effect in the CUSTOM ANIMATION pane then select EFFECT OPTIONS.



8 Set the AFTER ANIMATION to LIGHT BLUE to dim the text after it appears on the screen.

NOTE: You can also adjust the TIMING and TEXT ANIMATION from the FLY IN dialog box.

- 9 Select OK to accept the change.
- 10 The effect should play. If it doesn't, click on the PLAY button at the bottom of the CUSTOM ANIMATION pane to preview the effect.

B Animating Just One Text Point

Often in a presentation you want only one point to be added to the screen at a time, then the next point added when you are ready for it.



NOTE: Both text points should be displayed in the CUSTOM ANIMATION pane.



NOTE:

- i You can also change animation effects in the MODIFY section of the CUSTOM ANIMATION pane.
- ii Each effect is given a number to indicate the order in which they will be played.