

Drawing and Painting Tools

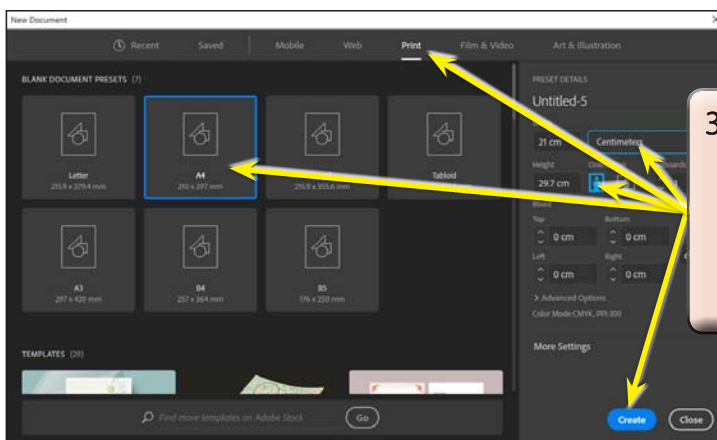
There are a range of drawing and painting tools that Adobe Illustrator provides. In this chapter we will look at the use of the PENCIL TOOL, the ERASER TOOL, the SMOOTH TOOL, the WIDTH TOOL, the PAINTBRUSH TOOL, the LIVE PAINT BUCKET and the JOIN TOOL.

When you create drawings in Illustrator you create a series of PATHS. A path is made up of one or more straight or curved lines, which can be closed (for example, a rectangle) or open with end points (called anchor points) at each end.

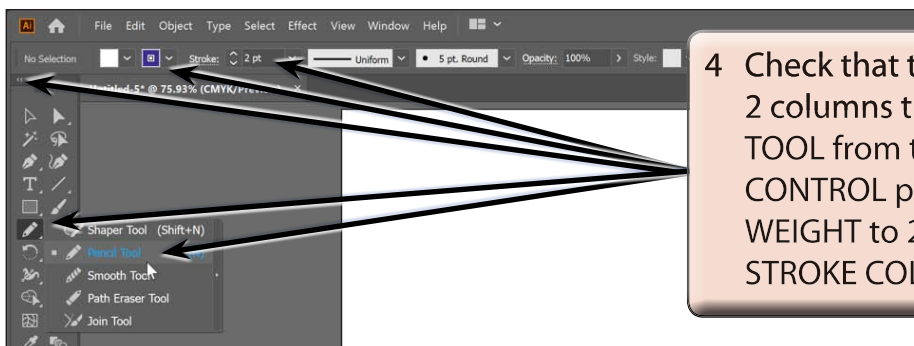
The Pencil Tool

The PENCIL TOOL lets you draw freely on the Artboard. Anchor points are added to the paths that you draw.

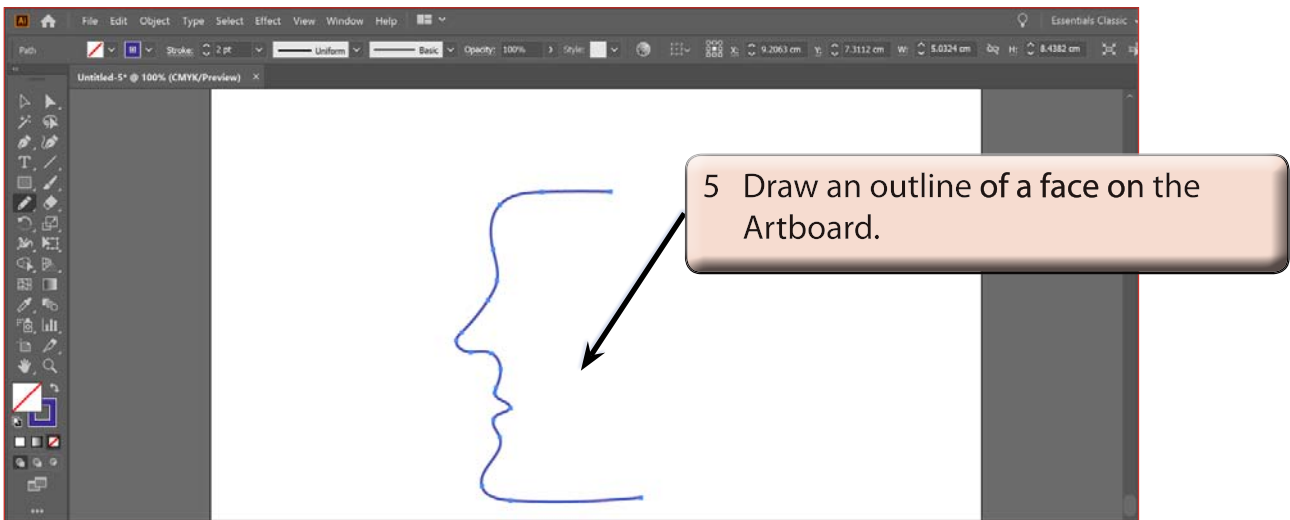
- 1 Load Adobe Illustrator CC or close the current document.
- 2 Select CREATE NEW from the WELCOME screen or NEW from the FILE menu to start a new document.



- 3 Select the PRINT profile followed by the A4 preset (or the paper size your printer uses), set the UNITS to CENTIMETRES, the ORIENTATION to PORTRAIT and select CREATE.



- 4 Check that the TOOLBAR is set to 2 columns then select the PENCIL TOOL from the TOOLBAR and, in the CONTROL panel, set the STROKE WEIGHT to 2 pt and select a dark STROKE COLOUR.

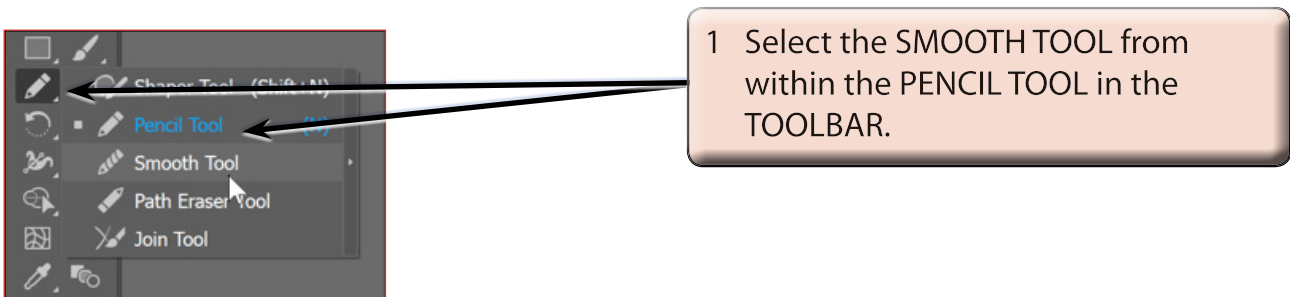


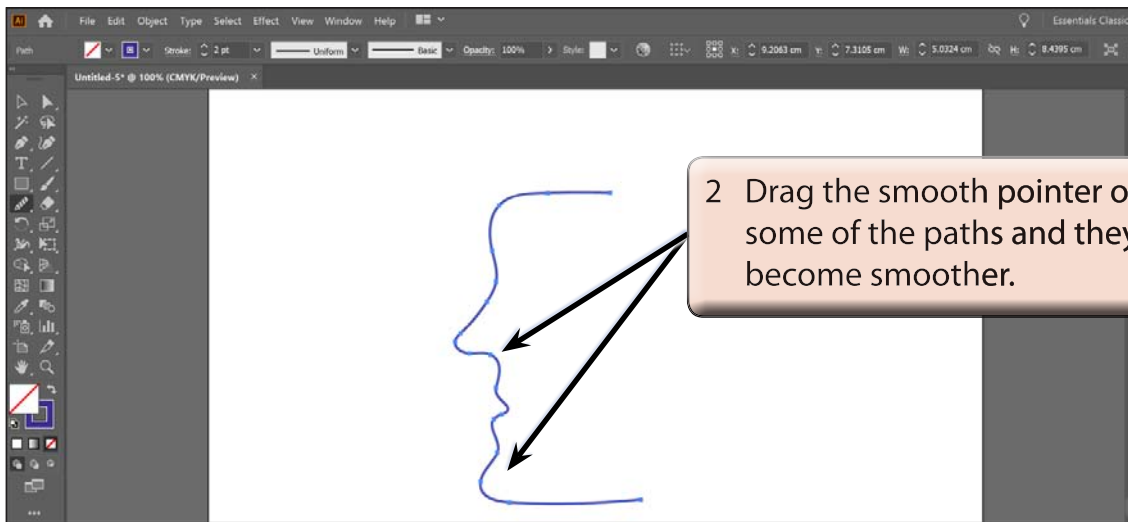
NOTE:

- i The outline does not need to be accurate. The SMOOTH and ERASER TOOLS will be used shortly to improve it.
- ii Notice that a series of anchor points have been added to the paths. These anchor points can be clicked on using the DIRECT SELECTION TOOL and adjusted if need be.

The Smooth Tool

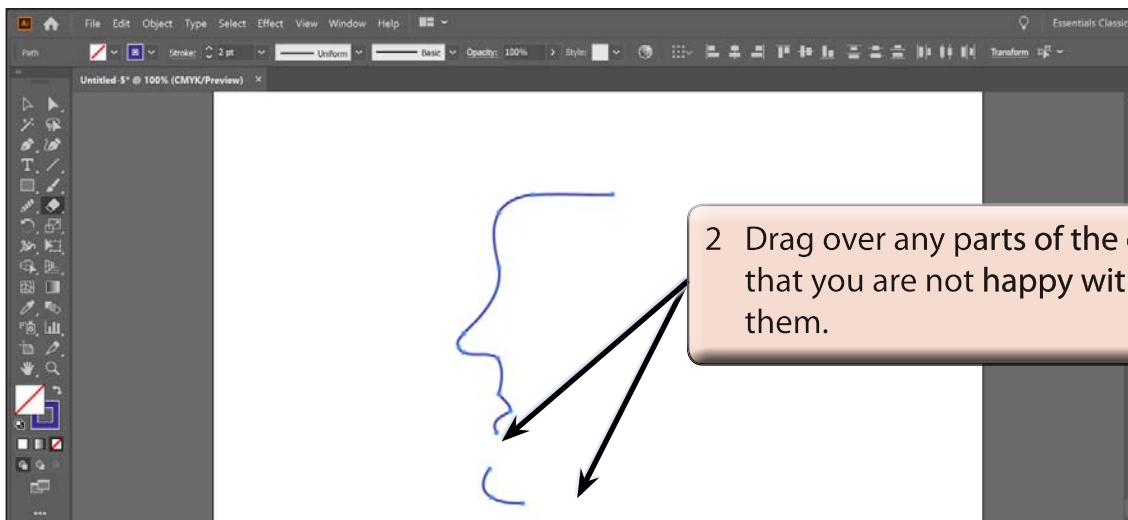
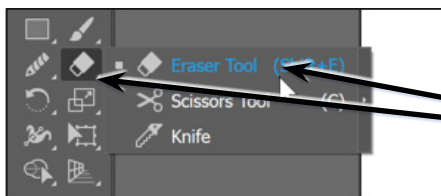
The SMOOTH TOOL allows you to smooth the paths so that the curves are more accurate.

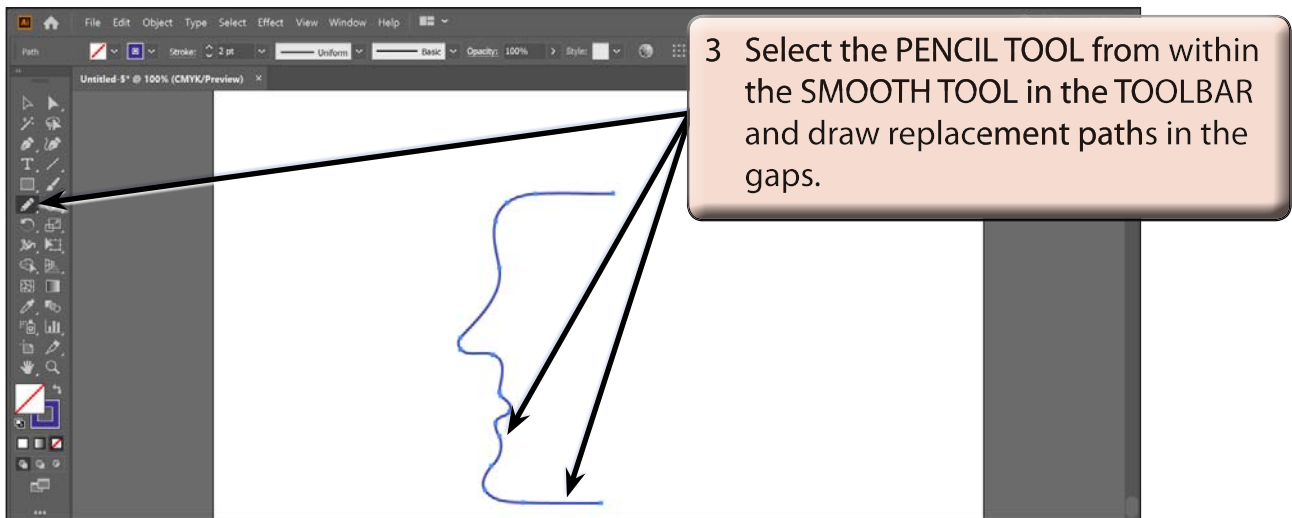




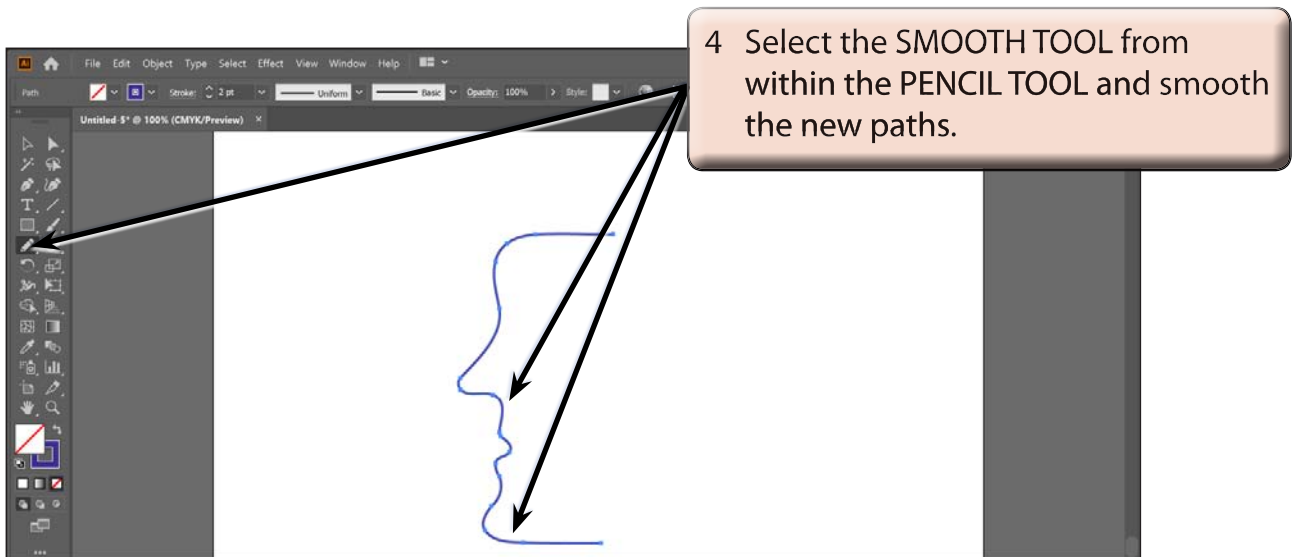
The Eraser Tool

The ERASER TOOL can be used to remove any parts of paths that are not correct.





NOTE: You can zoom the screen by pressing CTRL+ or COMMAND+ to ensure that the paths meet, then CTRL+0 or COMMAND+0 to return the view to FIT ARTBOARD IN WINDOW.



5 Save the document if you wish to then close it.