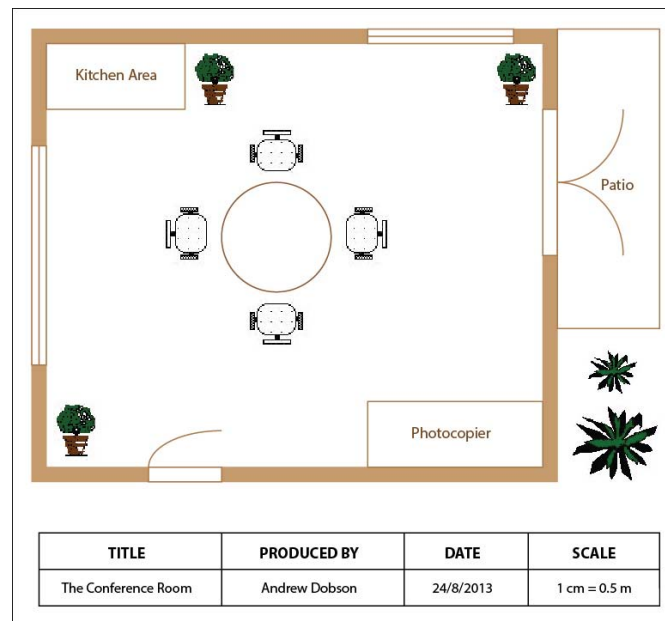


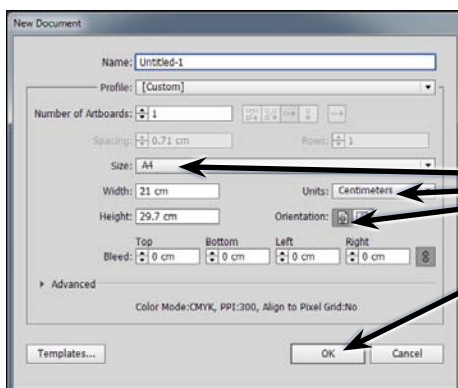
## Creating Accurate Designs

Adobe Illustrator provides tools to create highly accurate designs, some of which in the past have required a dedicated and expensive Computer Aided Design program. To illustrate how to produce an accurate design, the following Conference Room diagram will be created.



## Starting a New Document

- 1 Load Adobe Illustrator CS6 or close the current file and select NEW from the FILE menu to start a new document.



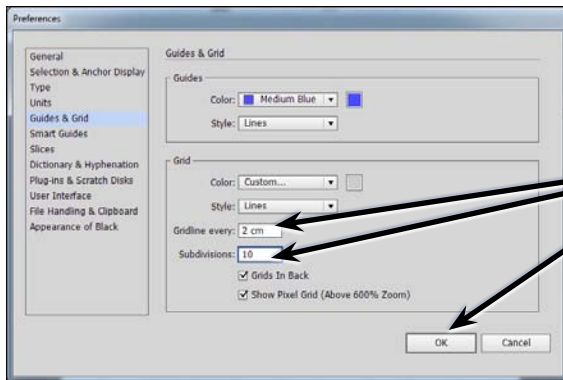
- 2 Set the SIZE to A4 (or the paper size your printer uses), the UNITS to CENTIMETRES, the ORIENTATION to PORTRAIT and select OK.

- 3 Use the VIEW menu to turn on SHOW RULERS, SHOW GRID and SNAP TO GRID.

## Setting the Scale

You should select an appropriate scale for a design such as this. A scale might be 1 cm = 1 m or 1 cm = 1 km, etc. So that the conference room will fit neatly on the page we will use a scale of 1 cm = 0.5 m. To do this a slightly more accurate grid will be used.

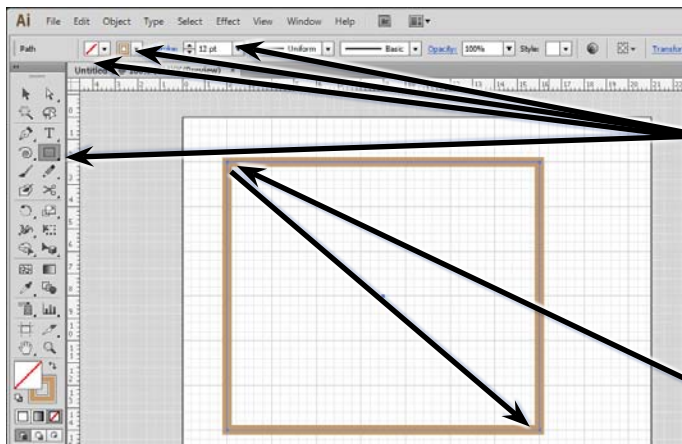
- 1 Display the EDIT menu on the Windows system or the ILLUSTRATOR menu on the Macintosh system, highlight PREFERENCES and select GUIDES & GRID.



- 2 Leave the GRIDLINES EVERY as 2 cm, enter 10 in the SUBDIVISIONS box and select OK.

## Entering the Walls of the Room

We will use thick shaded lines to produce the outline of the room.



- 1 Set the view to 100%, select the RECTANGLE TOOL, set the FILL COLOUR to NONE, the STROKE COLOUR to LIGHT BROWN and the STROKE WEIGHT to 12 pt.

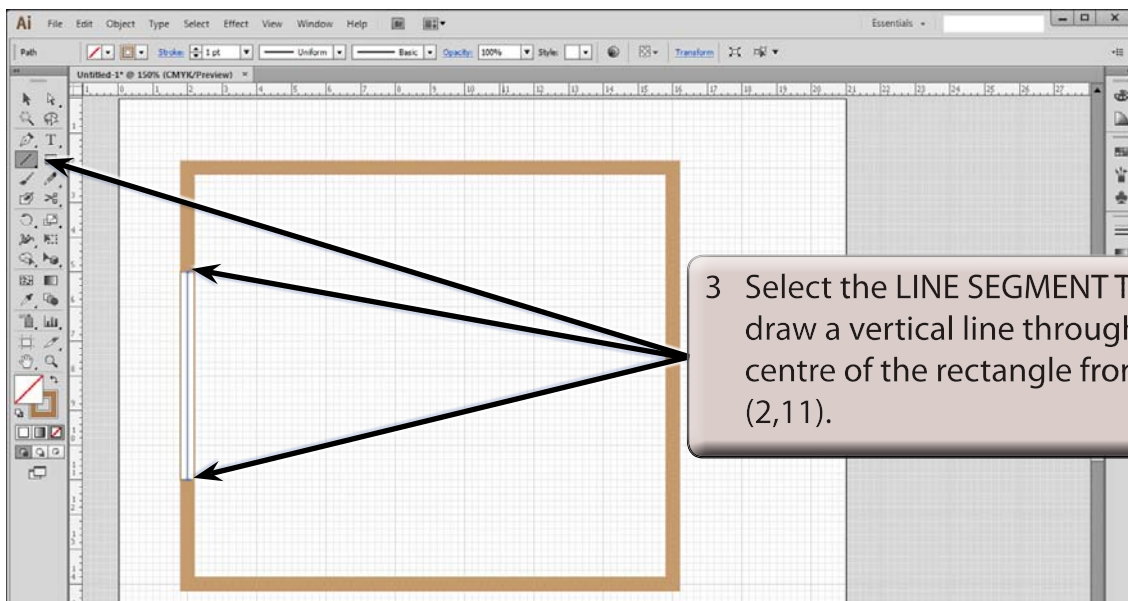
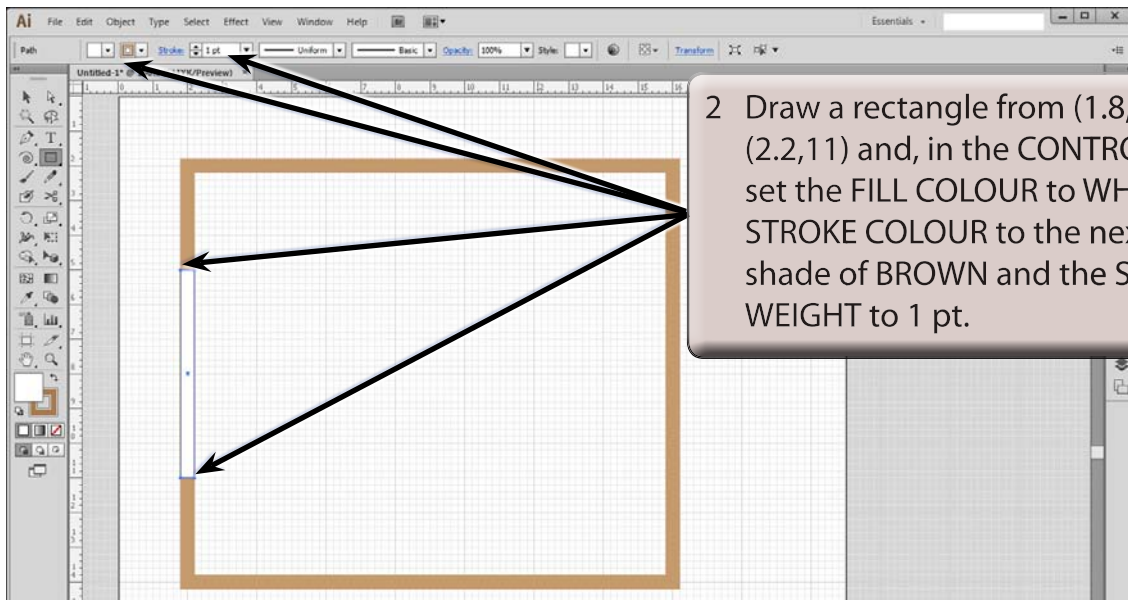
- 2 Drag a rectangle from 2 cm in the top Ruler and 2 cm in the left Ruler (2,2) to 16 cm in the top Ruler and 14 cm in the left Ruler (16,14).

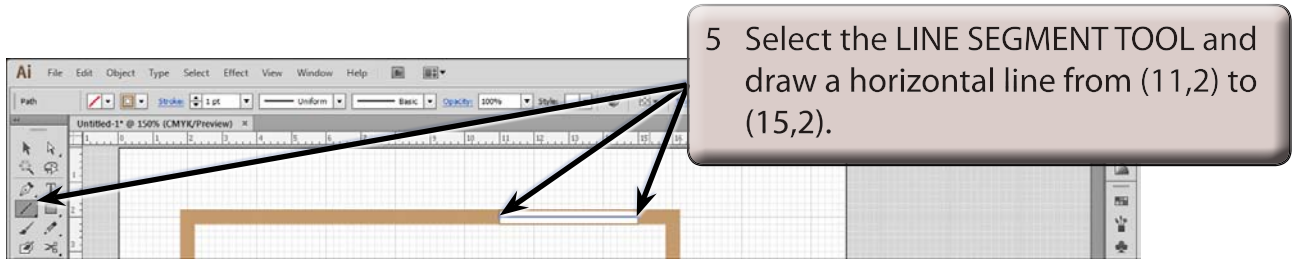
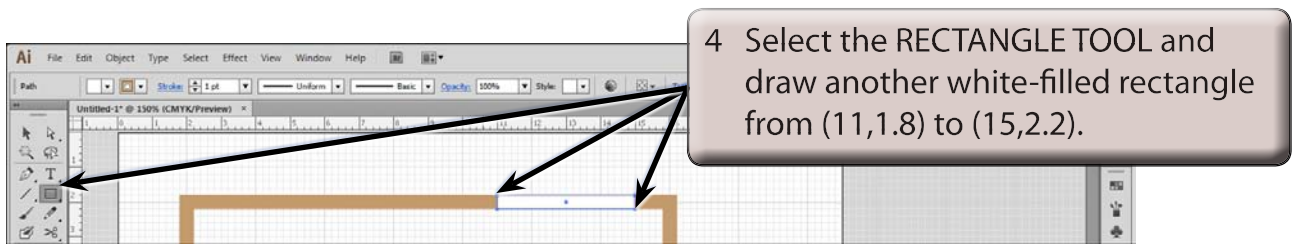
**NOTE:** This has drawn a rectangle that represents 7 m across (14 cm on the screen) and 6 m down (12 cm on the screen).

## Adding the Windows

Windows are usually represented by a thin rectangle with a line through it.

- 1 Increase the zoom to 150% using CTRL+ or COMMAND+ and scroll to the rectangle.

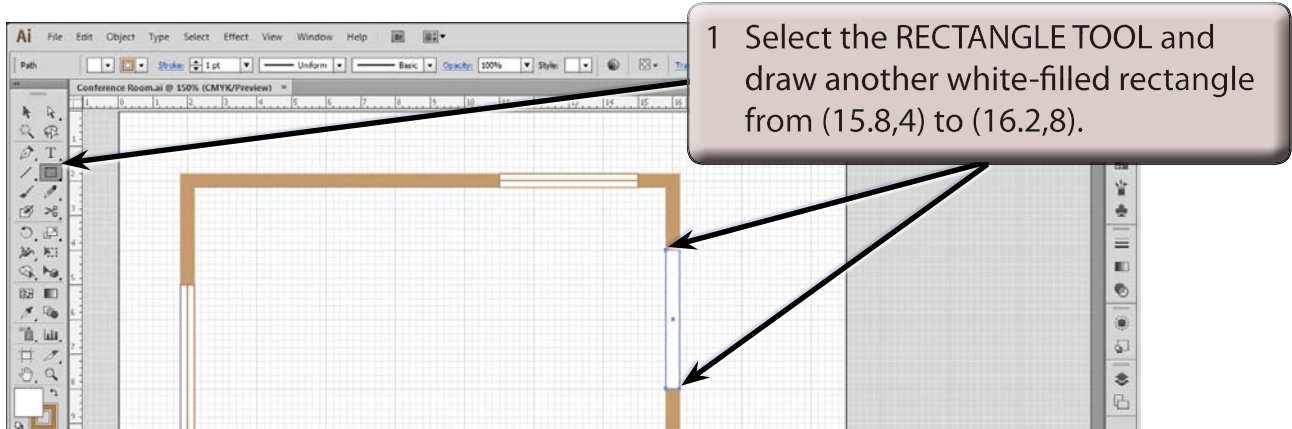




- 6 Save the document in your STORAGE folder as:  
Conference Room

## Adding the Doors

We will represent the doors with a rectangle and an arc attached to it. There are two sets of doors required, one set of double doors and one single door.



- 2 Select Deselect from the SELECT menu (or press SHIFT+CTRL+A or SHIFT+COMMAND+A) to deselect the rectangle.