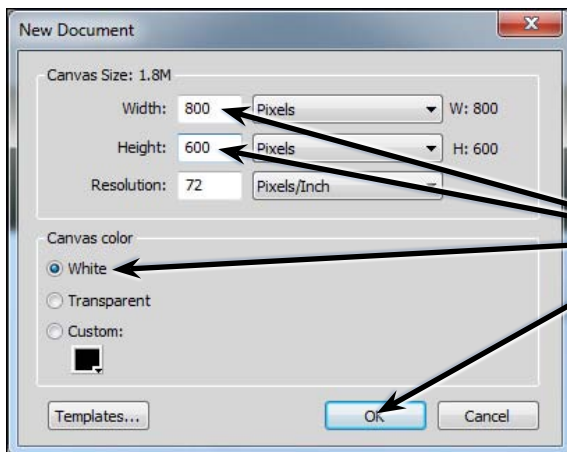


Symbols and the Library Panels

Adobe FireWorks allows you to store images, buttons and artwork as SYMBOLS, which means the item can be used over and over in documents. There are also prepared symbols that are provided within FireWorks. Symbols are stored in the LIBRARY panels at the base of the PANEL GROUP.

Starting a New Document

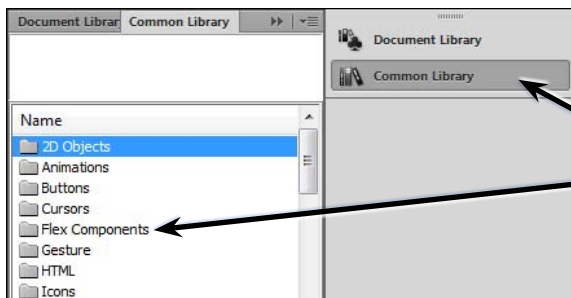
- 1 Load Adobe FireWorks or close the current document.
- 2 In the CREATE NEW section of the WELCOME screen click on FIREWORKS DOCUMENT to start a new document.



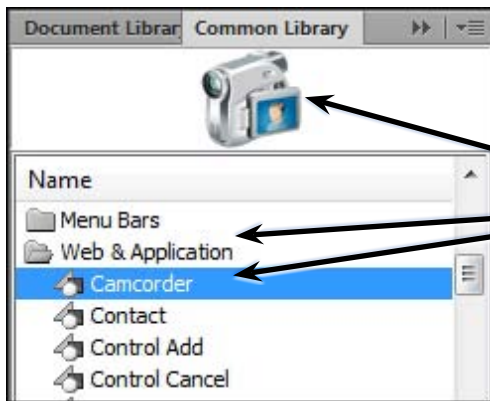
3 Set the WIDTH to 800 pixels, the HEIGHT to 600 pixels, the CANVAS COLOUR to WHITE and select OK.

Looking at the Provided Symbols

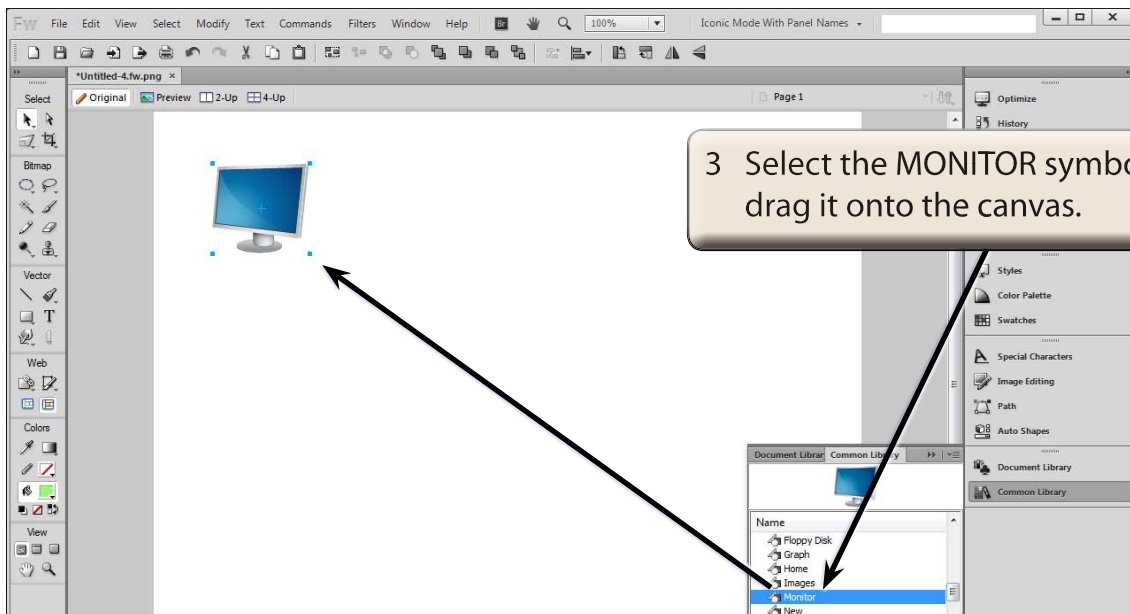
The symbols that FireWorks provides can be found in the COMMON LIBRARY panel.



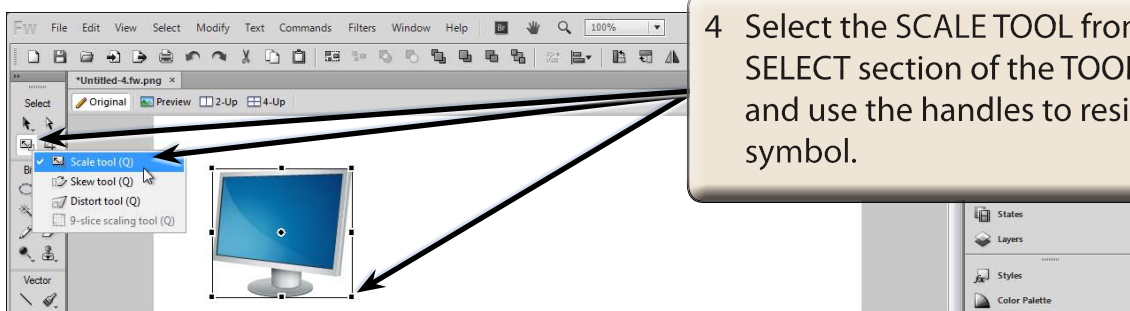
1 Expand the COMMON LIBRARY panel at the base of the PANEL GROUP and the symbol categories are displayed.



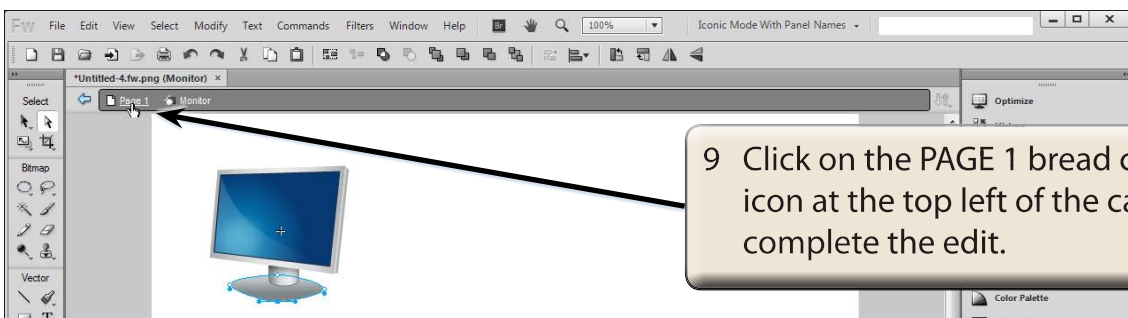
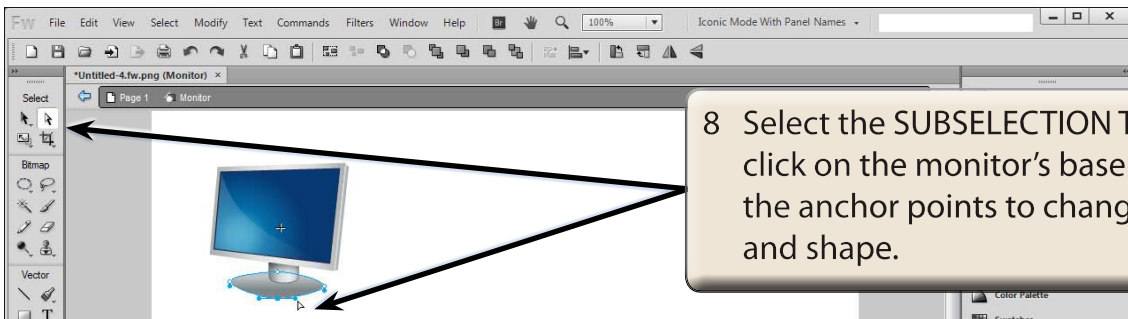
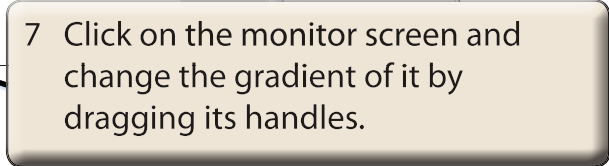
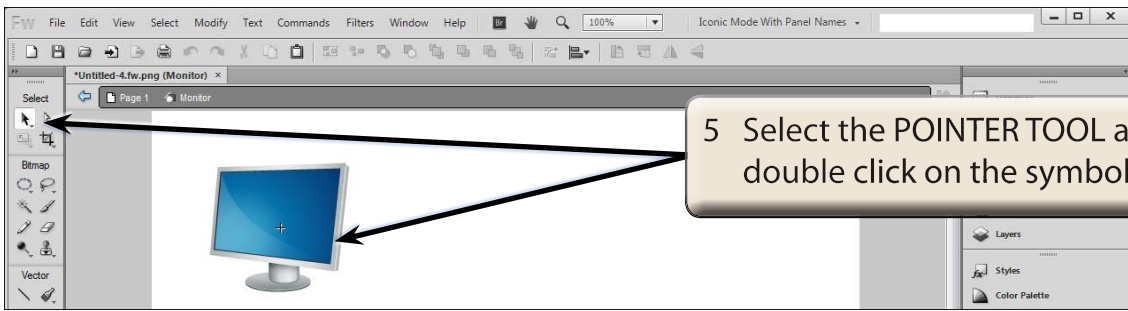
2 Double click on the WEB & APPLICATION icon and select some of its contents. A preview of the symbol is displayed at the top of the panel.



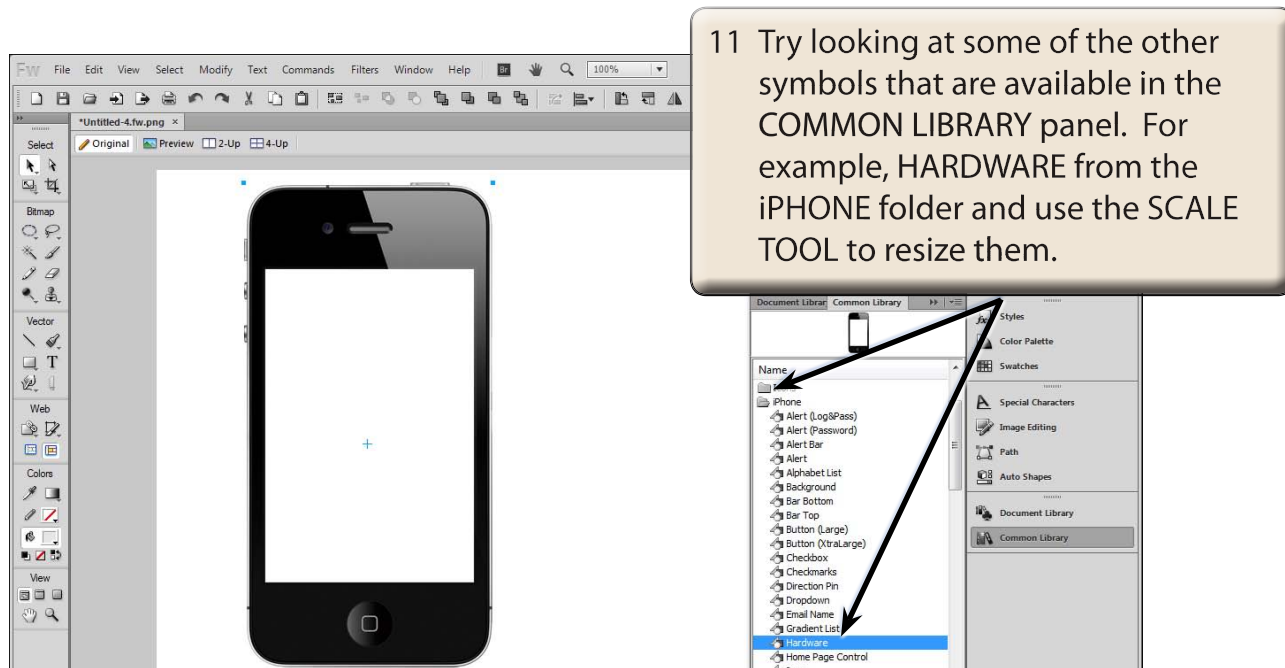
3 Select the MONITOR symbol and drag it onto the canvas.



4 Select the SCALE TOOL from the SELECT section of the TOOLS panel and use the handles to resize the symbol.



10 Select the POINTER TOOL and delete the monitor from the canvas.



Creating Symbols

You can create symbols of your own. Let's say that Harry's Tours requires a logo created for their web site and they will want to use it multiple times. It will involve placing some text over an image of the world.

A Inserting the Globe Image

- 1 Delete all the symbols that are on the canvas.
- 2 Display the FILE menu and select IMPORT.
- 3 Access the FWcs6 SUPPORT FILES, open the CHAPTER 16 folder and open the GLOBE image.