

Useful Tools

To complete this module, we will look at a few useful tools that FireWorks provides. These will include the REPLACE COLOUR TOOL, the 9-SLICE SCALE TOOL, creating Tween Animations, adding multiple pages to documents and using Templates.

The Replace Colour Tool

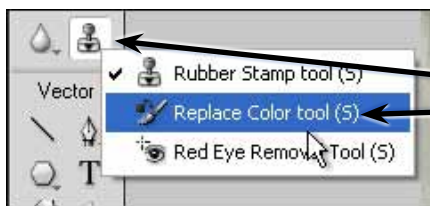
The REPLACE COLOUR TOOL can be used to replace one colour in an image with another or to apply a tint to part of an image.

A Opening a Sample Image

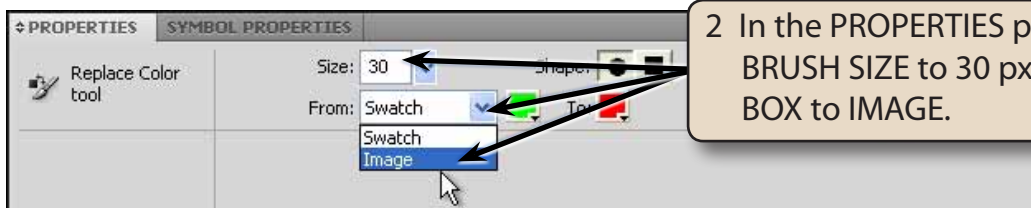
- 1 Load Adobe FireWorks or close the current document.
- 2 In the OPEN A RECENT ITEM section of the WELCOME screen click on OPEN button.
- 3 Access the FWcs5 SUPPORT FILES folder, open the CHAPTER 20 folder and open the HORSE image.

B Replacing a Colour

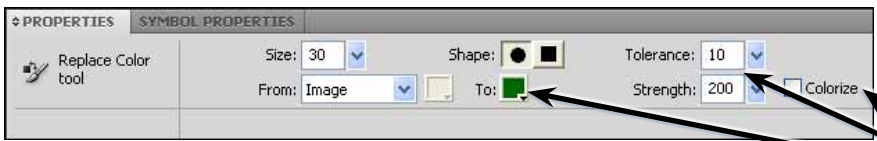
Let's change the guard's red coat to green.



1 Click and hold on the RUBBER STAMP TOOL and select the REPLACE COLOUR TOOL.



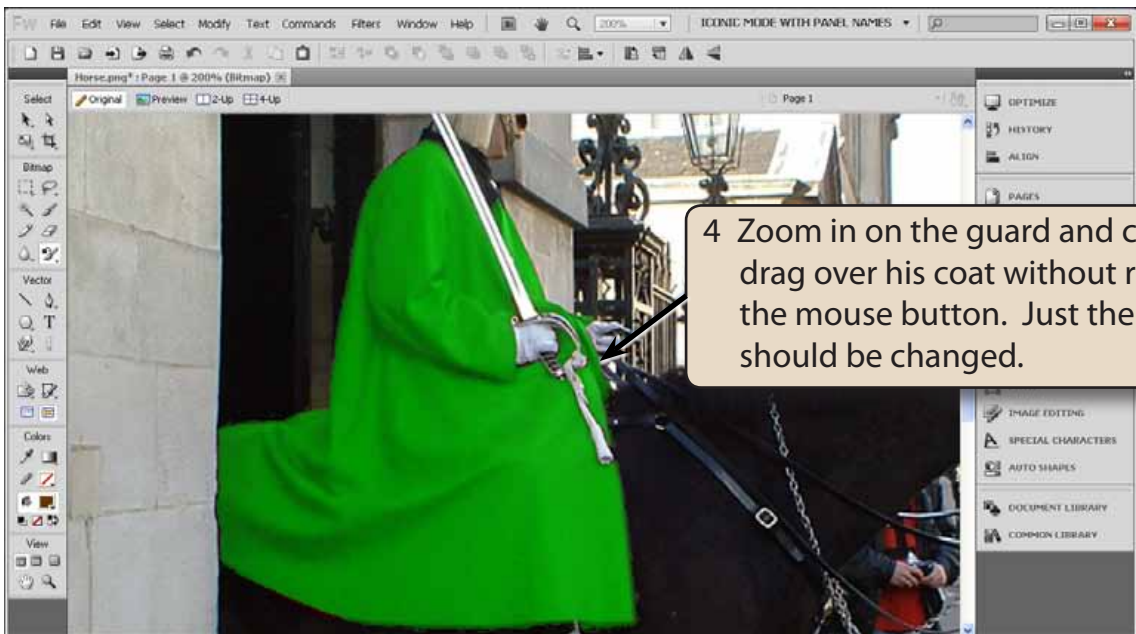
2 In the PROPERTIES panel set the BRUSH SIZE to 30 px and the FROM BOX to IMAGE.



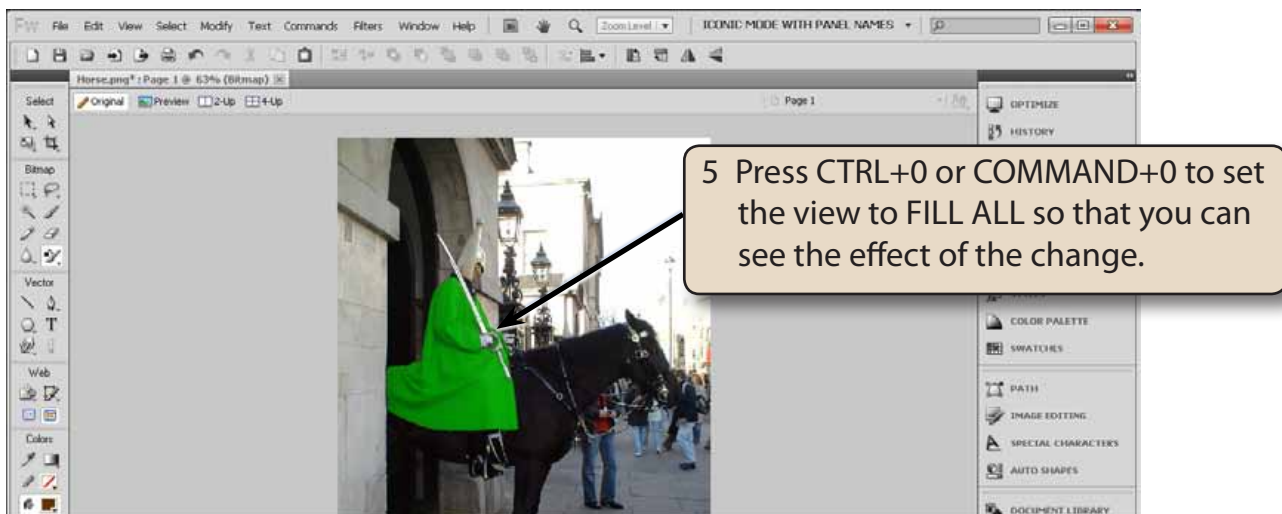
3 Set the TO box to GREEN, the TOLERANCE to 10, the STRENGTH to 200 and turn off COLOURIZE.

NOTE:

- i The lower the TOLERANCE the less colours close to the selected colour are changed.
- ii The SHAPE of the brush can be changed to a square when required.



NOTE: You can undo the recolour and try colouring with COLOURIZE turned on in the PROPERTIES panel to see the difference it makes.



NOTE: The first click on the image selects the colour to be replaced.

C Tinting Parts of the Image

The building behind the horse and the sky are over-exposed (too light) in this photograph. The REPLACE COLOUR TOOL can be used to tint these parts of the image to make their exposure less pronounced.

