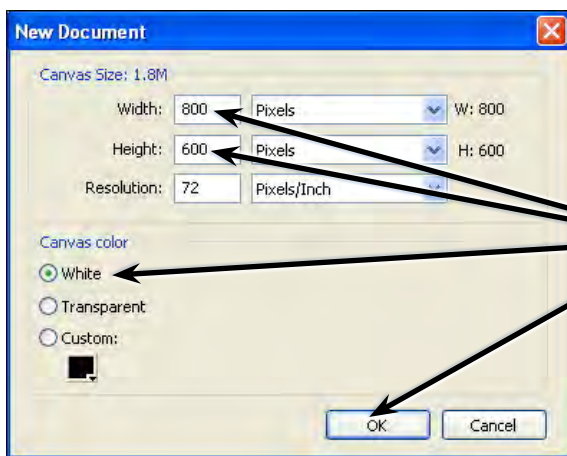


Applying Effects

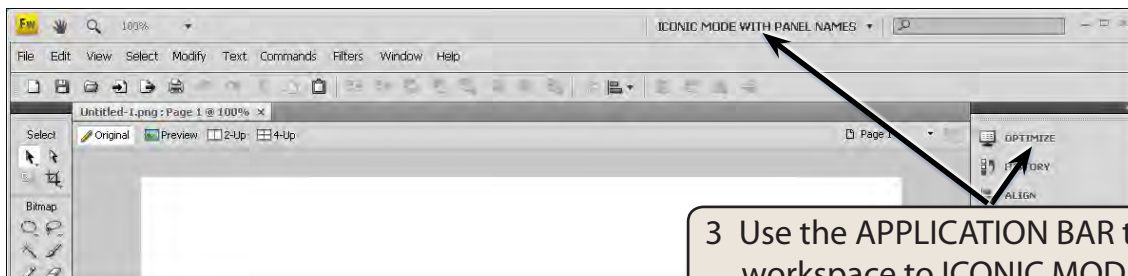
Numerous effects such as bevels, drop shadows, glows, etc. can be applied to vector objects in FireWorks. These are called LIVE FILTERS.

Starting the Document

- 1 Load Adobe FireWorks CS4 or close the current documents then select FIREWORKS DOCUMENT from the CREATE NEW section of the FIREWORKS WELCOME SCREEN.



- 2 Set the WIDTH to 800 pixels, the HEIGHT to 600 pixels, the CANVAS COLOUR to WHITE and select OK.

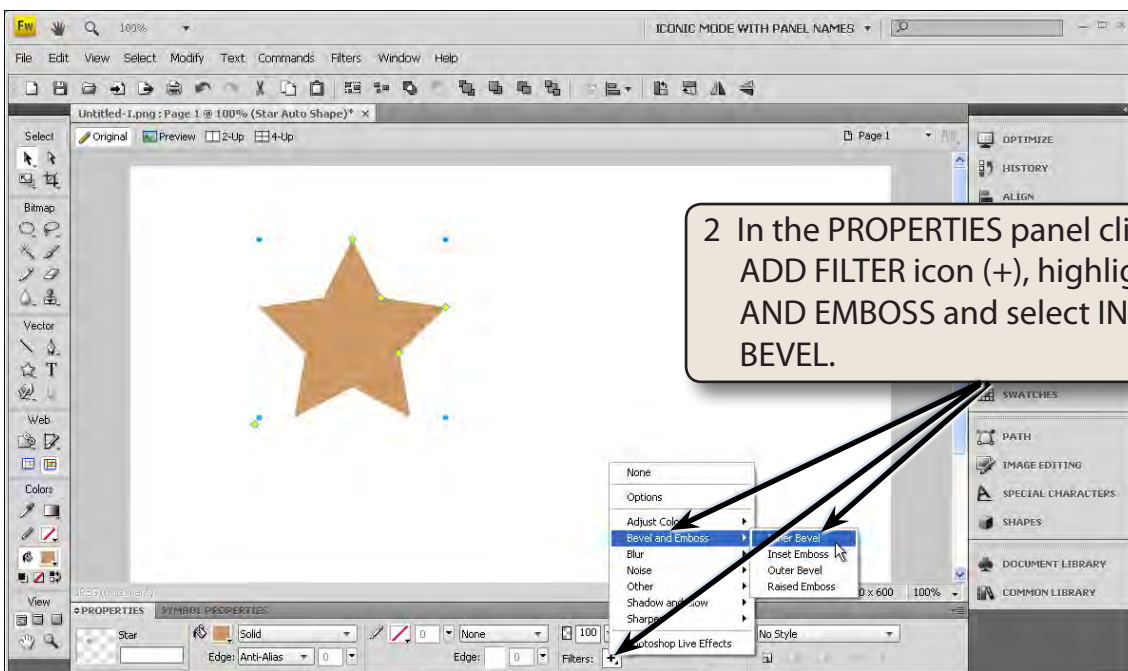
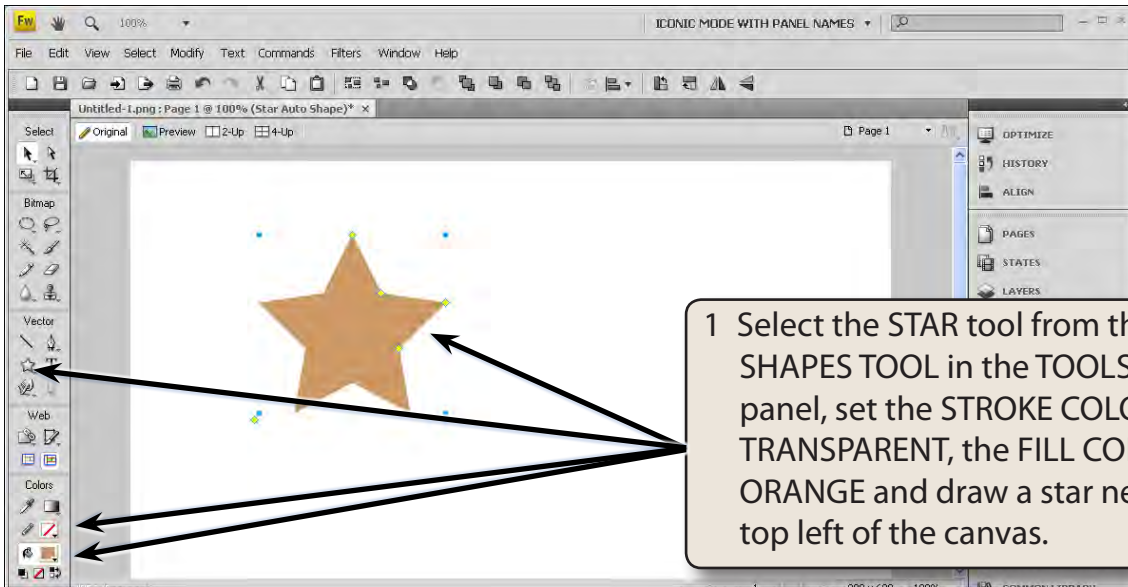


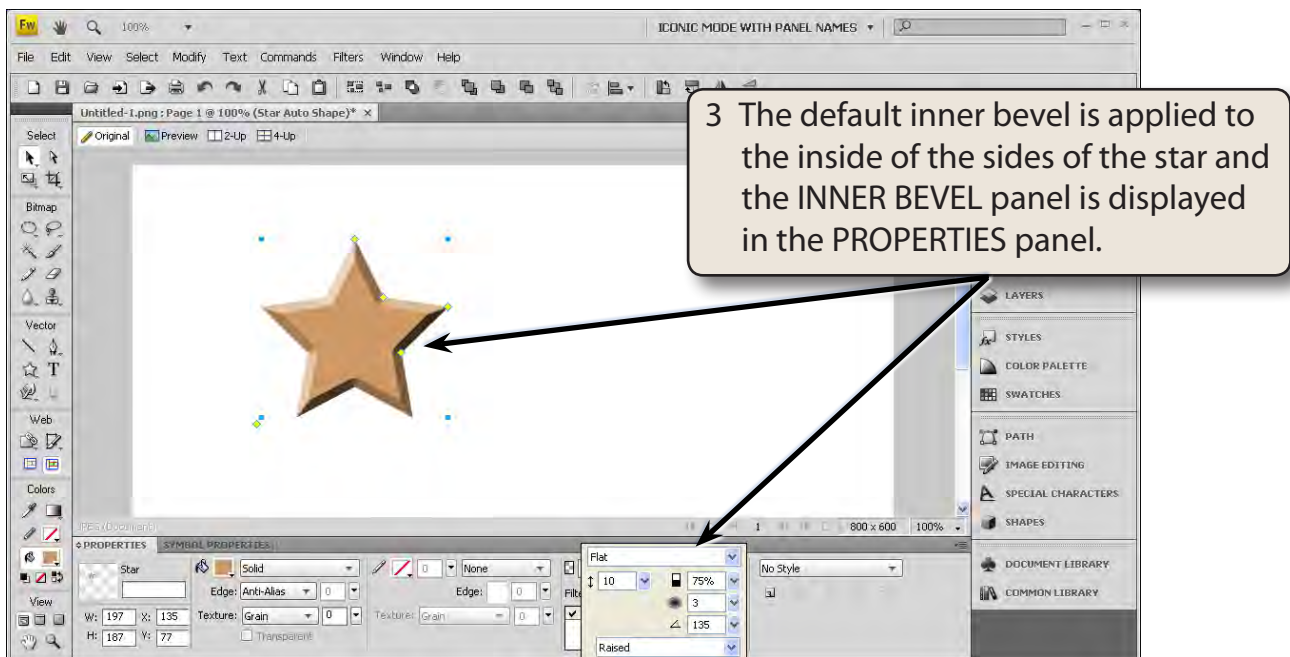
- 3 Use the APPLICATION BAR to set the workspace to ICONIC MODE WITH PANEL NAMES so that the panel names are displayed in the PANEL GROUP.

Bevel and Emboss

The BEVEL and EMBOSS effects raise or lower the sides of a vector object to create a three-dimensional effect.

A Applying an Inner Bevel





B Adjusting the Inner Bevel

The INNER BEVEL panel in the PROPERTIES panel can be used to customise the bevel.

