

# Pivot Tables

---

Pivot Tables allow spreadsheet data to be summarised into reports similar to those created in database programs such as Microsoft Access and FileMaker Pro. Within the spreadsheet data the columns become the fields of the database and the rows become the individual records.

There are three types of fields (columns) in a Pivot Table:

- Category Fields** which contain data that can be grouped together, for example, Departments of a business.
- Data Fields** which contain numerical data on which calculations such as sum or average can be applied.
- Arbitrary Fields** which contain general data that cannot be grouped or have calculations applied to it, for example, a person's first name.

## Loading the Prepared Data

The sales data for a month for an online store that sells products over the internet has been prepared for you and summaries of the data are required.

- 1 Load Microsoft Excel 2011 and cancel the EXCEL WORKBOOK GALLERY, or close the current workbook.
- 2 Display the FILE menu, select OPEN, access the CHAPTER 20 folder of the EXCEL 2011 SUPPORT FILES and load the file:

Selanything Sales

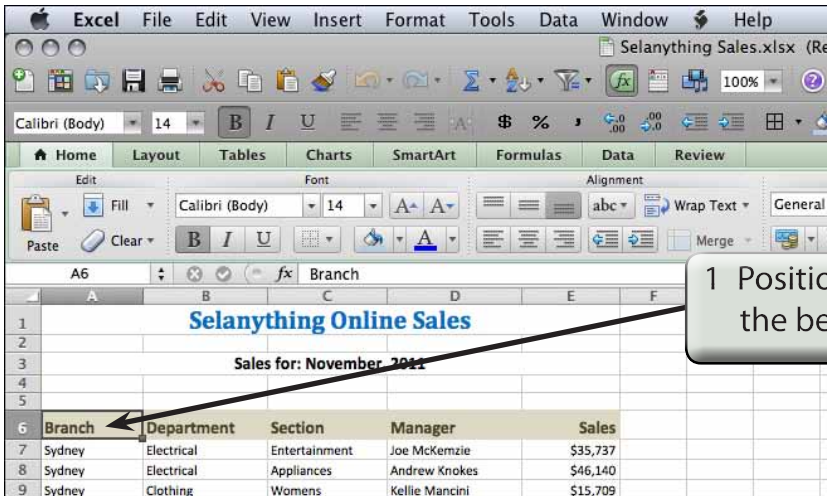
Selecting YES to the READ-ONLY dialogue box.

- 3 Look through the data to familiarise yourself with it. There are three Branches and within each branch there are 4 Departments with sections within each Department. The figures show the total sales for a month for each section.

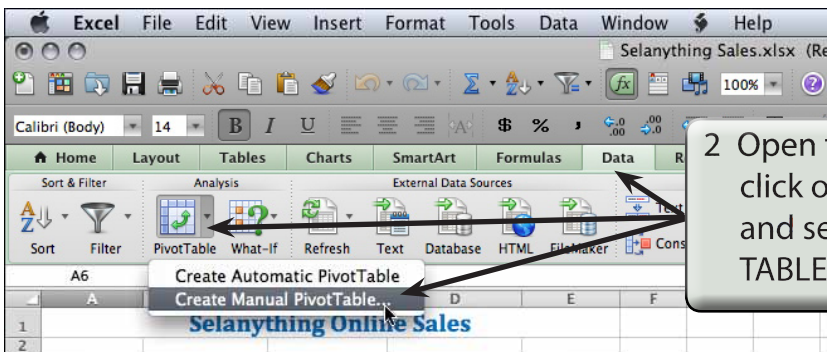
## Creating a Pivot Table

A Pivot Table will be used to summarize the sales for the month.

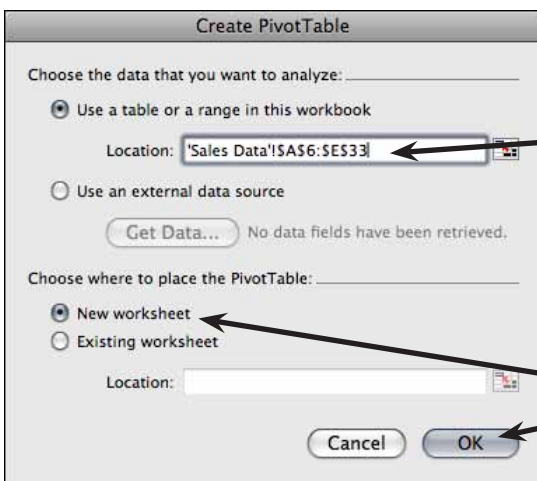
### A Setting Up the Pivot Table



1 Position the cursor at cell A6 which is the beginning of the table.



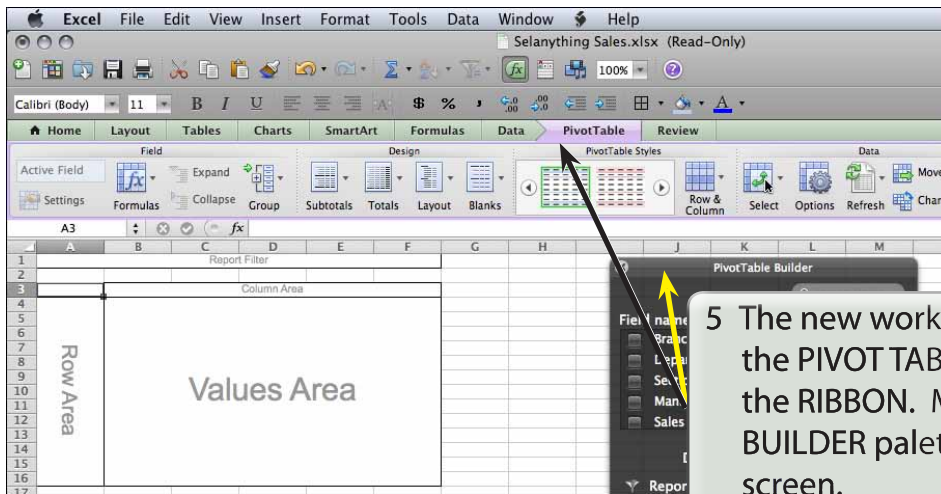
2 Open the DATA tab of the RIBBON, click on the PIVOT TABLE icon arrow and select CREATE MANUAL PIVOT TABLE.



3 The CREATE PIVOT TABLE dialogue box is opened and the spreadsheet data starting from the selected cell is inserted in the TABLE RANGE box.

4 Check that NEW WORKSHEET is selected and click on OK to create the Pivot Table in a separate worksheet.

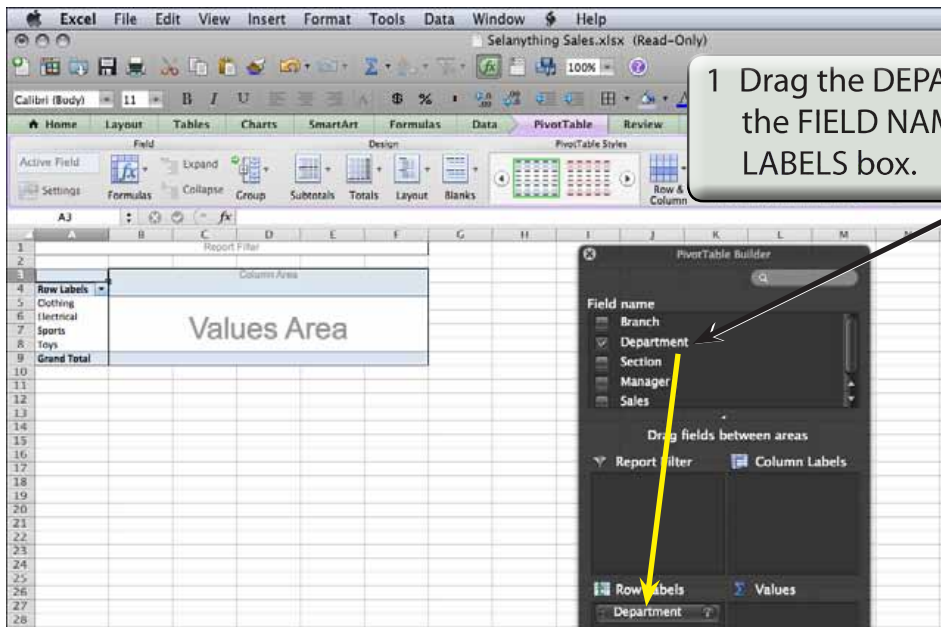
**NOTE:** When setting up a spreadsheet that will have Pivot Tables created from it, it is best to have no blank rows or columns. If there are blank rows or columns, the Pivot Table wizard will only select the data up to the blank row or column.



5 The new worksheet is created and the PIVOT TABLE tab is added to the RIBBON. Move the PIVOT TABLE BUILDER palette to the right of the screen.

## B Inserting the Rows, Columns and Data

The Pivot Table is created by placing fields in the boxes at the base of the FIELD LIST pane. Let's set the Departments to be down the left of the report, the Branches across the top and the Sales to be the data within the Pivot Table.



1 Drag the DEPARTMENT field from the FIELD NAME frame into the ROW LABELS box.

2 Drag the BRANCH field from the FIELD NAME frame into the COLUMN LABELS box.

The screenshot shows the PivotTable Builder task pane. In the 'Field name' list, 'Branch' is selected. A yellow arrow points from 'Branch' to the 'Column Labels' box. The 'Report Filter' box contains 'Department'. The 'Row Labels' box contains 'Department'. The 'Values' box is empty.

Report Filter	Column Labels			
	Brisbane	Melbourne	Sydney	Grand Total
Clothing				
Electrical				
Sports				
Toys				
Grand Total				

3 Drag the SALES field from the FIELD NAME frame into the VALUES box.

The screenshot shows the PivotTable Builder task pane. In the 'Field name' list, 'Sales' is selected. A yellow arrow points from 'Sales' to the 'Values' box. The 'Report Filter' box contains 'Department'. The 'Column Labels' box contains 'Branch'. The 'Row Labels' box contains 'Department'. The 'Values' box contains 'Sum of Sales'.

Report Filter	Column Labels			
Sum of Sales	Brisbane	Melbourne	Sydney	Grand Total
Clothing	46735	46735	38507	131977
Electrical	72118	72118	81877	226113
Sports	56769	56769	52248	165786
Toys	15767	15767	14469	46003
Grand Total	191389	191389	187101	569879

4 The summary table is created showing the sales for each Department within each Branch and Grand Totals are provided for the DEPARTMENT and BRANCH sales.