

Creating Menus and Tabbed Panels

As a web site becomes larger with more pages linked it can be a space saver to have some links or content hidden and set them to display when the user moves the mouse over a button or text link. In other words as a pop-up menu or tabbed panels. You can create pop-up menus and tabbed panels using a program such as FireWorks, however, DreamWeaver provides popup menus and tabbed panels as widgets, which are small pieces of code that can be edited and formatted. Think of a widget as a mini-program within the main program.

DreamWeaver provides a collection of SPRY widgets that combine CSS and Javascript, and allow you to add dynamic elements to your web sites. Two of these are SPRY popup menus and SPRY tabbed panels.

Popup Menu

A Saving the Prepared Pages

Three Airline pages that have been prepared for you will need to be saved in your TRAVELWISE2 folder so that links from the popup menu items can be set to them.

- 1 Load DreamWeaver or close the current files and set the FILES panel to your TRAVELWISE2 site.
- 2 Display the FILE menu and select OPEN.

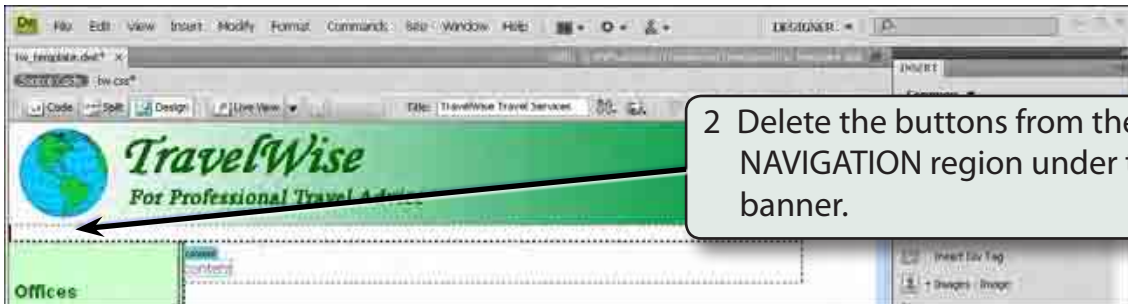


- 4 Use SAVE AS from the FILE menu to save the page in your TRAVELWISE2 folder under the same name. There is no need to update links, then close the pages.
- 5 Repeat steps 2 to 4 for the BA.HTML and SINGAPORE.HTML pages.

B Adjusting the Template

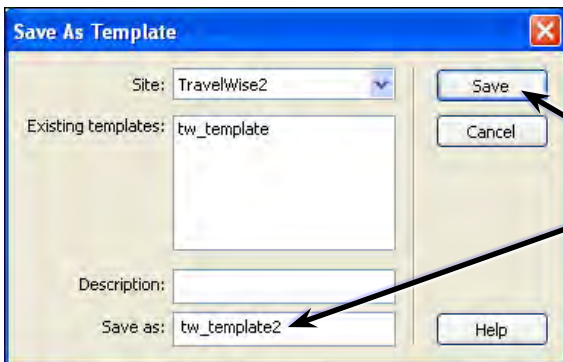
The popup menu will be placed in the main navigation section of the template. The template will then be saved under a different name so that you still have a copy of the original template.

- 1 Open the TW_TEMPLATE.DWT page from the TEMPLATES folder of the FILES panel.



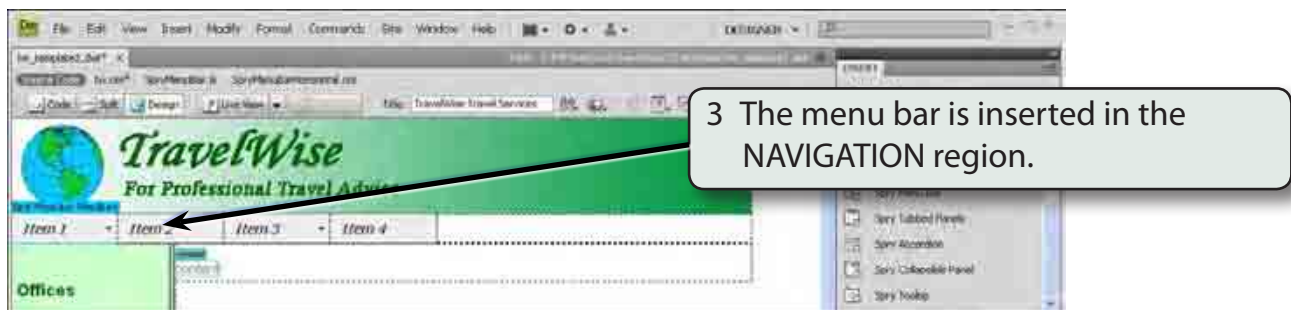
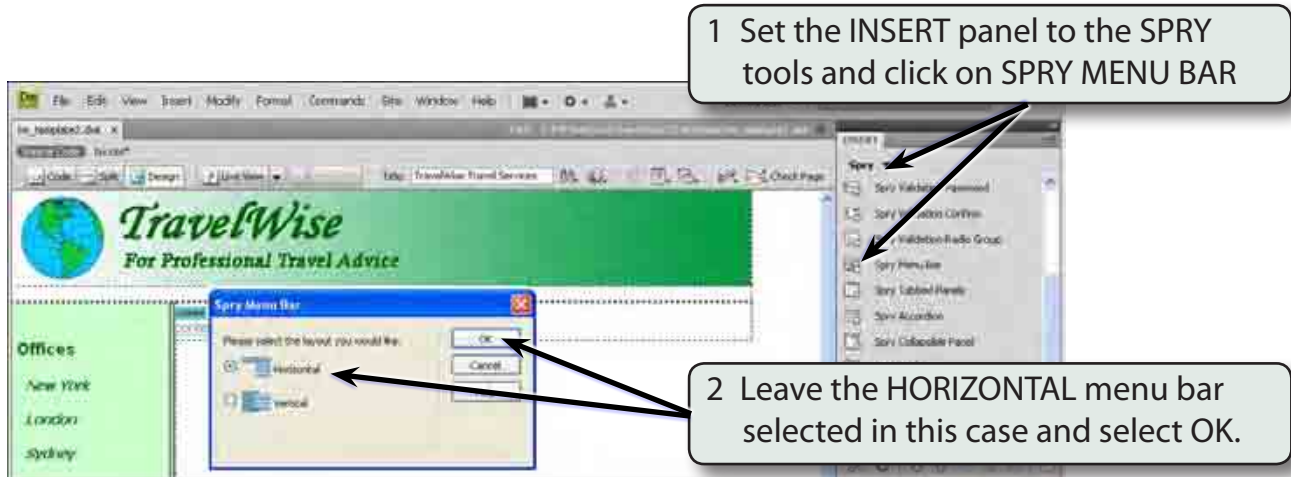
NOTE: If the CONTENT region has been centred from the previous exercise, you can click in the CONTENT region and select the LEFT ALIGN button from the PROPERTIES INSPECTOR to left align it.

- 3 Display the FILE menu and select SAVE AS TEMPLATE



C Inserting the Popup Menu

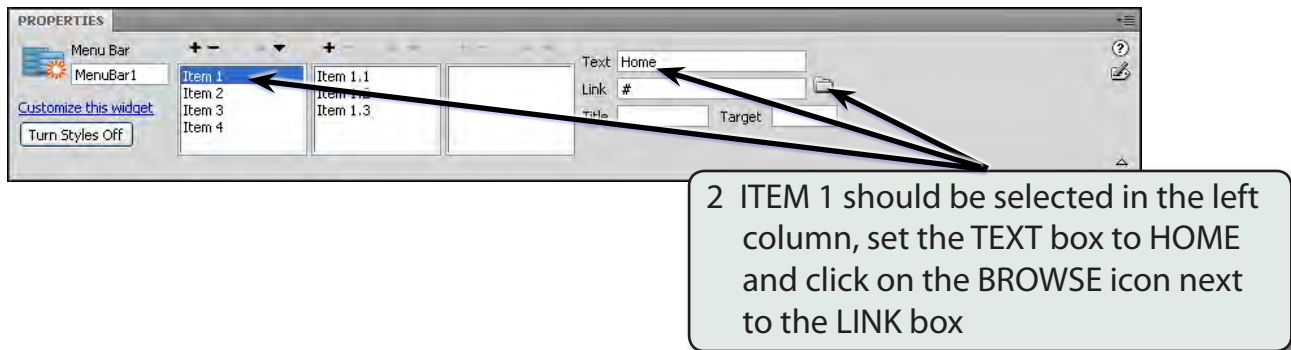
The SPRY widgets are displayed in the SPRY tools of the INSERT panel.

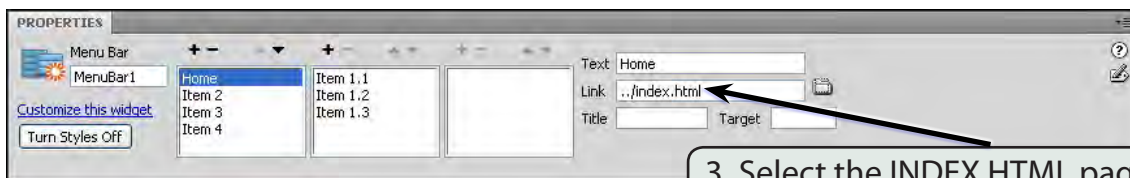


D Adjusting the Menu Buttons

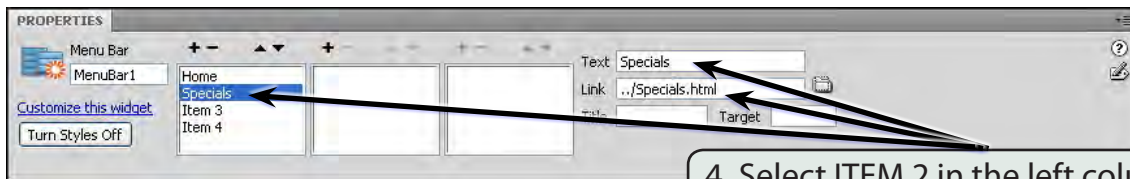
The text in the menu bar, the number of buttons and the sub-menus are all set in the PROPERTIES INSPECTOR. In this case we will create a menu bar with five buttons and set a popup menu on one of those buttons.

- 1 In the PROPERTIES INSPECTOR leave the MENU BAR name as MenuBar1.

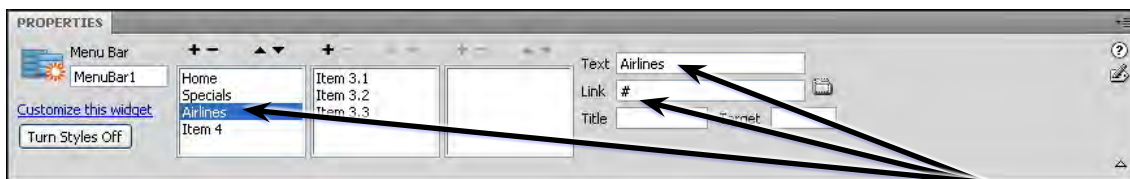




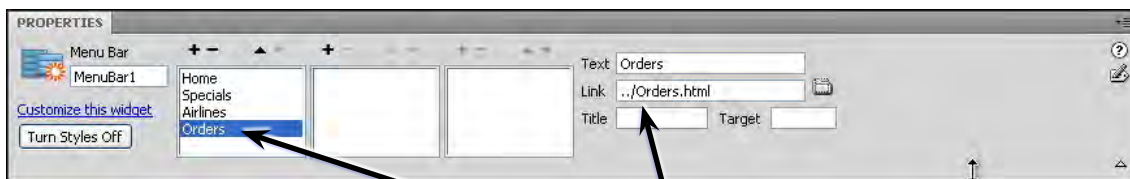
3 Select the INDEX.HTML page from your TRAVELWISE2 folder to insert the link.



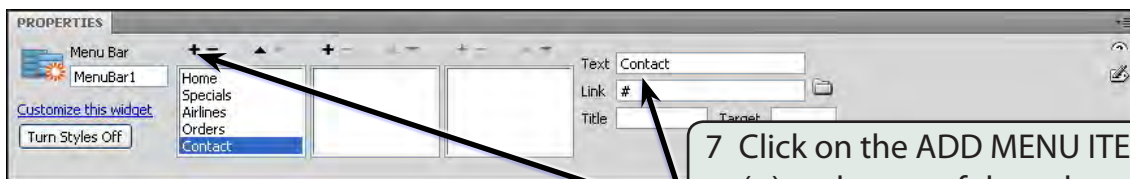
4 Select ITEM 2 in the left column, set its TEXT box to SPECIALS and its LINK box to the SPECIALS.HTML page.



5 Select ITEM 3 in the left column and set its TEXT box to Airlines, but leave its LINK box as #.



6 Select ITEM 4 in the left column and set its TEXT box to ORDERS and its LINK box to the ORDERS.HTML page.



7 Click on the ADD MENU ITEM button (+) at the top of the column to insert another button. Set the TEXT box to CONTACT and leave the LINK as #.