

Adding Content to CSS Pages

Adding content to CSS page layouts is basically the same as adding content to normal pages. With CSS page layouts you need to take care to position the cursor in the required DIV tag.

Let's add a simple company logo, some navigation buttons and some text to the layout you created in the last chapter.

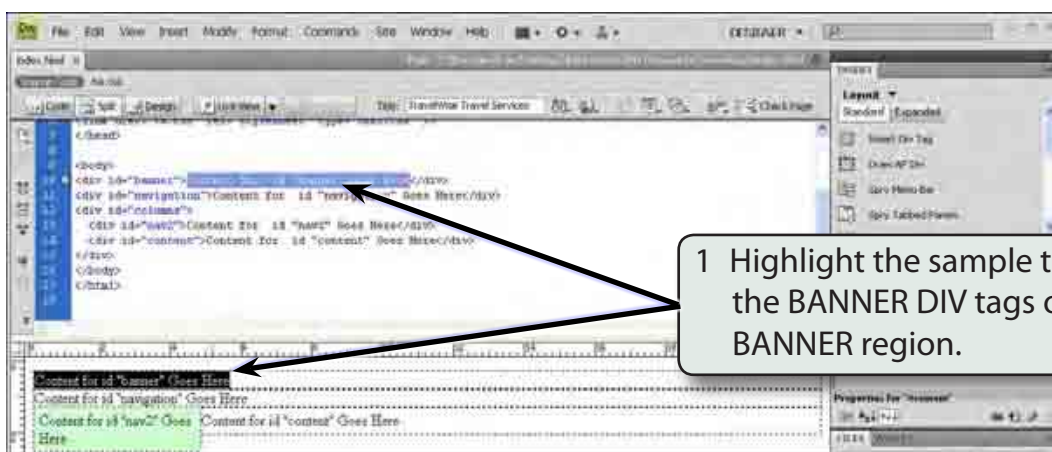
Inserting the Company Logo

The company logo will be placed in the BANNER region. This can be done in the CODE pane or the DESIGN pane.

A Opening the Page

- 1 Load DreamWeaver, set the FILES panel to your TRAVELWISE2 site and the screen should be set to DESIGNER view.
- 2 Open the INDEX.HTML page and click on the SPLIT VIEW button to show both the CODE and DESIGN panes.

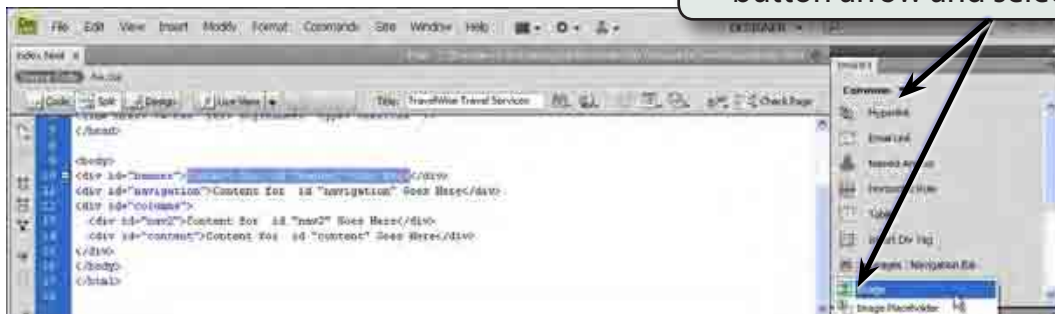
B Inserting the Image



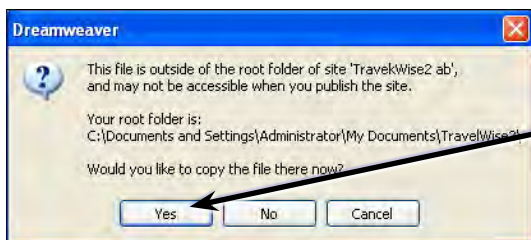
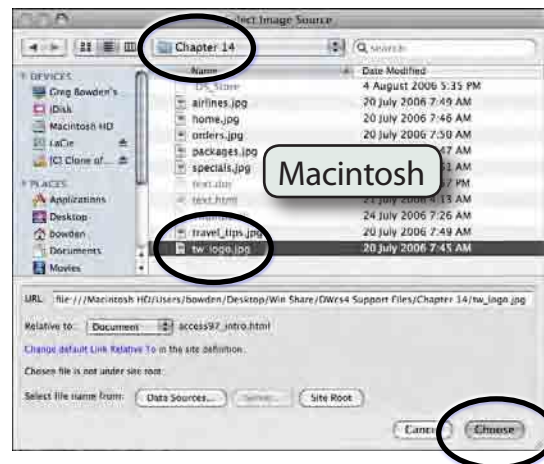
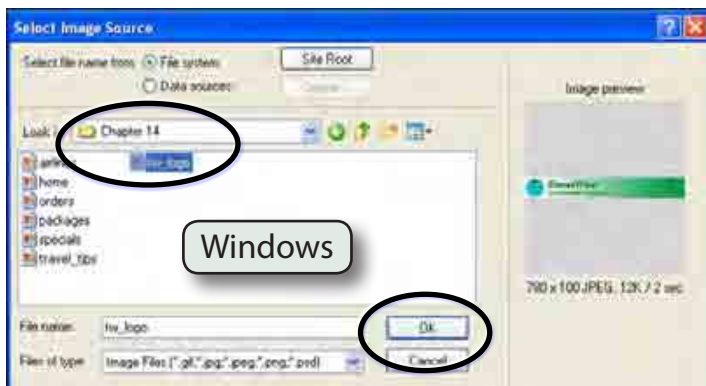
1 Highlight the sample text between the BANNER DIV tags or in the BANNER region.

- 2 Press the BACKSPACE or DELETE key to remove the text.

3 Set the INSERT panel to the COMMON tools, click on the IMAGES button arrow and select IMAGE.

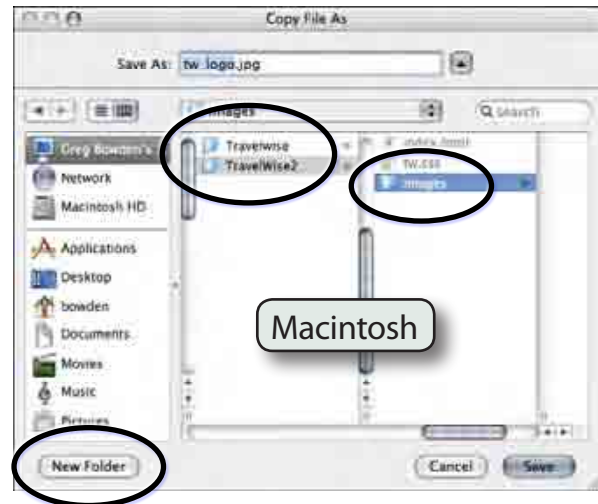
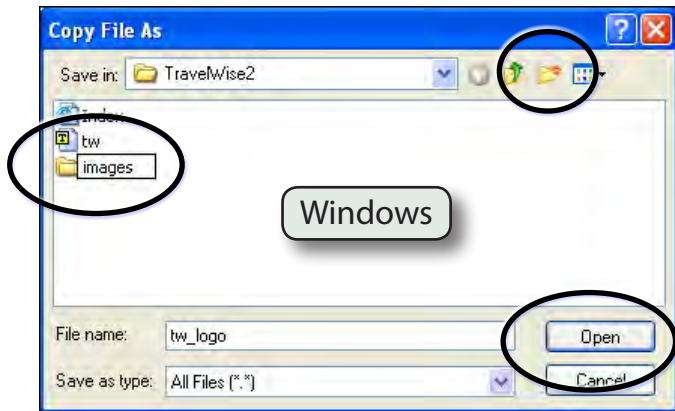


4 Access the DWcs4 SUPPORT FILES, open the CHAPTER 14 folder, select the TW_LOGO.JPG file and select OK or CHOOSE. Refer to the following diagrams.



5 Click on YES to the dialogue box telling you that the image is outside the TRAVELWISE2 site.

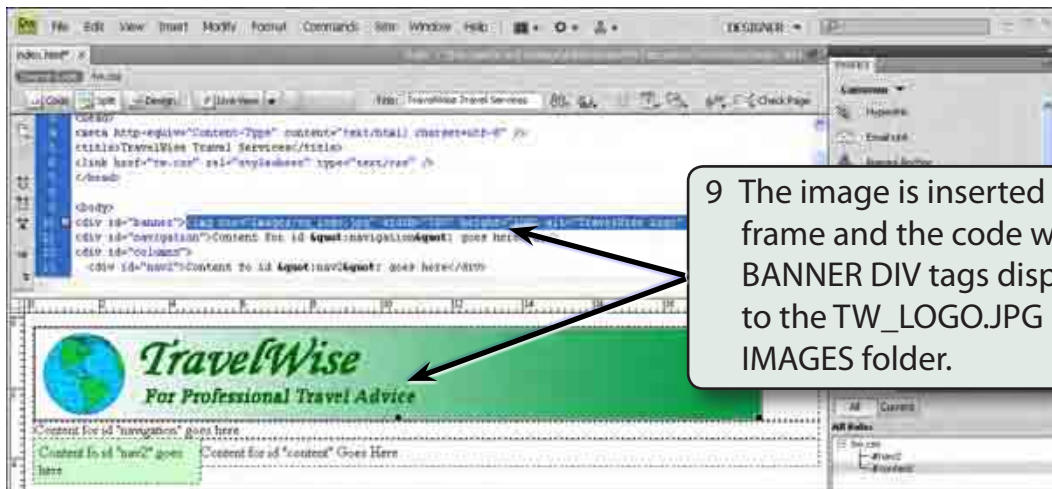
- 6 Create a NEW FOLDER in your TRAVELWISE2 folder called IMAGES and open the folder. Refer to the following diagrams.



- 7 Click on SAVE to insert the image.



8 Set the ALTERNATE TEXT to:
TravelWise Logo
and select OK.



9 The image is inserted in the BANNER frame and the code within the BANNER DIV tags displays the link to the TW_LOGO.JPG image in the IMAGES folder.

NOTE: Click on the REFRESH button in the CSS STYLES panel or in the PROPERTIES INSPECTOR if the image is not displayed.