

# Anchor Points and Hotspots

Some other types of links that are used within web sites are Anchor Points and Hotspots. Anchor Points are links within a page that allow the user to move to sections of the page that are not visible on the screen. Hotspots allow you to assign areas of an image or page that can be set to a link.

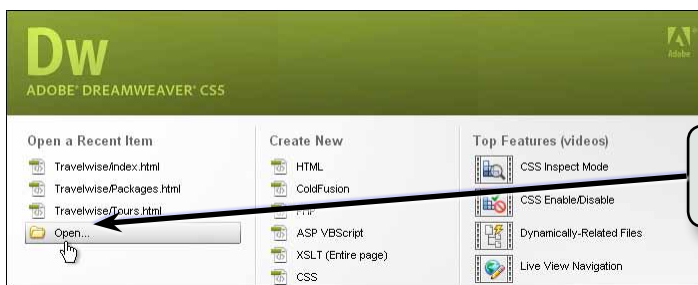
## Links Within a Page

There are times when you may have a long page of text and/or images that won't fit on the screen. You can provide links within the page so that the user can quickly skip from section to section. This is achieved by setting ANCHOR POINTS then setting links to those points.

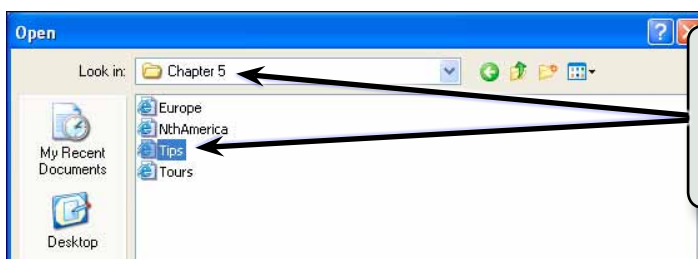
A page with two screens of text has been prepared for you. It needs ANCHOR POINTS inserted.

## A Loading the Prepared Page

- 1 Load DreamWeaver CS5 or close the current pages, saving any changes.
- 2 Set the FILES panel to your TRAVELWISE site and the screen to DESIGNER view.



3 Click on the OPEN button in the WELCOME screen.



4 Access the DWcs5 SUPPORT FILES, open the CHAPTER 5 folder and open the TIPS.HTML page. It provides tips for touring Britain.

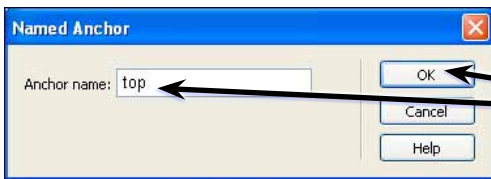
- 5 Use SAVE AS from the FILE menu to save the page in your TRAVELWISE folder under the same name (TIPS.HTML). Select NO if an UPDATE LINKS message appears.

## B Setting the Anchor Points

Users need to be able to jump from one section of the page to another. Anchor points need to be placed at significant points to allow this to occur. You need to think carefully where you place these anchors, remembering that not all internet users have the same sized monitors. Spaces can be added to the document to make the sections more clearly defined.



1 Check that the cursor is at the beginning of the first line 'Tips for Touring Britain' then click on the NAMED ANCHOR button in the COMMON tools of the INSERT panel.

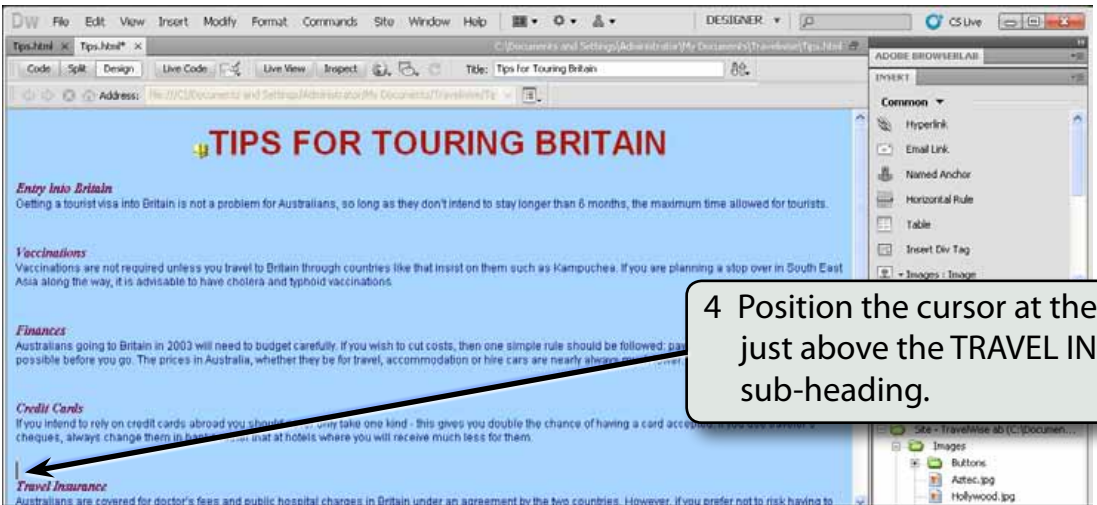


2 In the NAMED ANCHOR dialogue box call the anchor: top to allow a link to be set back to the top of the page and select OK.

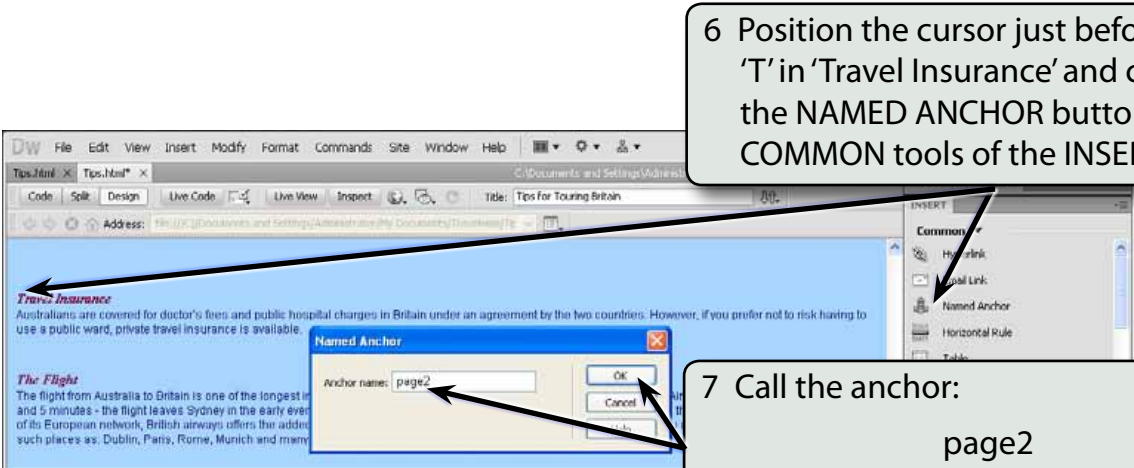


3 An ANCHOR symbol will be added next to the text.

**NOTE:** The anchor symbol will not be displayed in the browser and it can be turned off using the VIEW menu - VISUAL AIDS - INVISIBLE ELEMENTS. However, it is probably better to know where you have set anchor points.



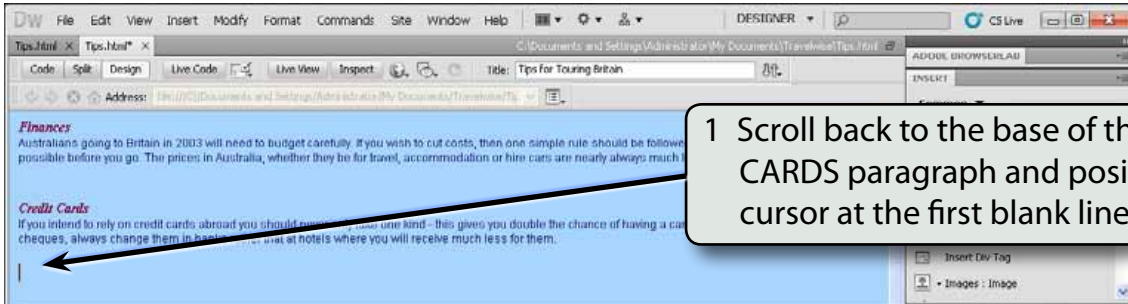
5 Press the <enter> or <return> key about 8 times to add some blank lines. This will significantly separate screen 1 from screen 2.



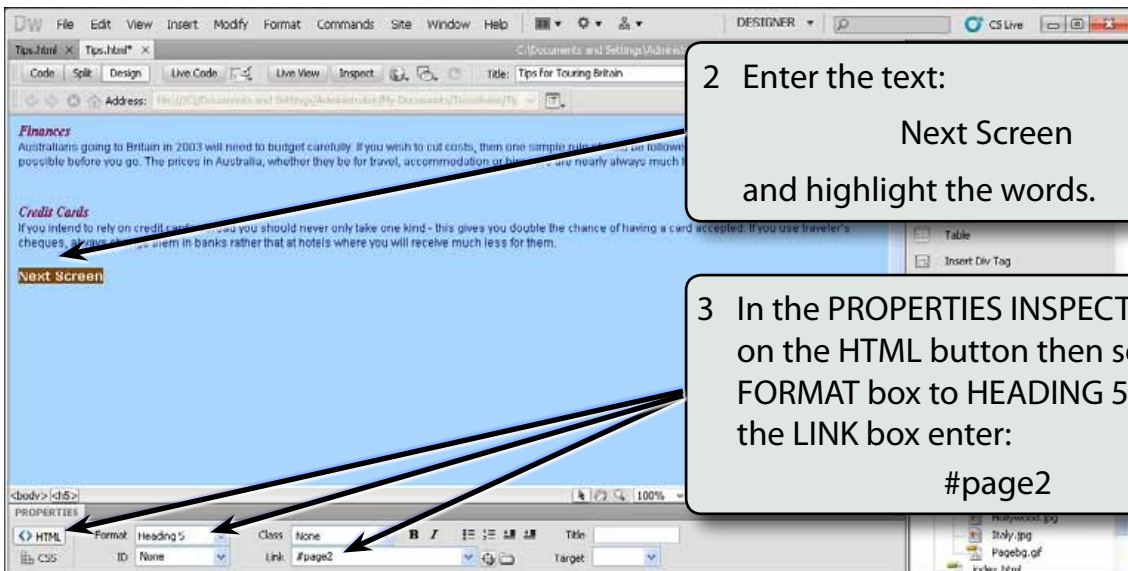
**NOTE:** The ANCHOR NAME must be one word. If you want to use more than one word, connect the words with the \_ symbol.

## C Setting the Anchor Links

Links can now be provided to the anchor points.

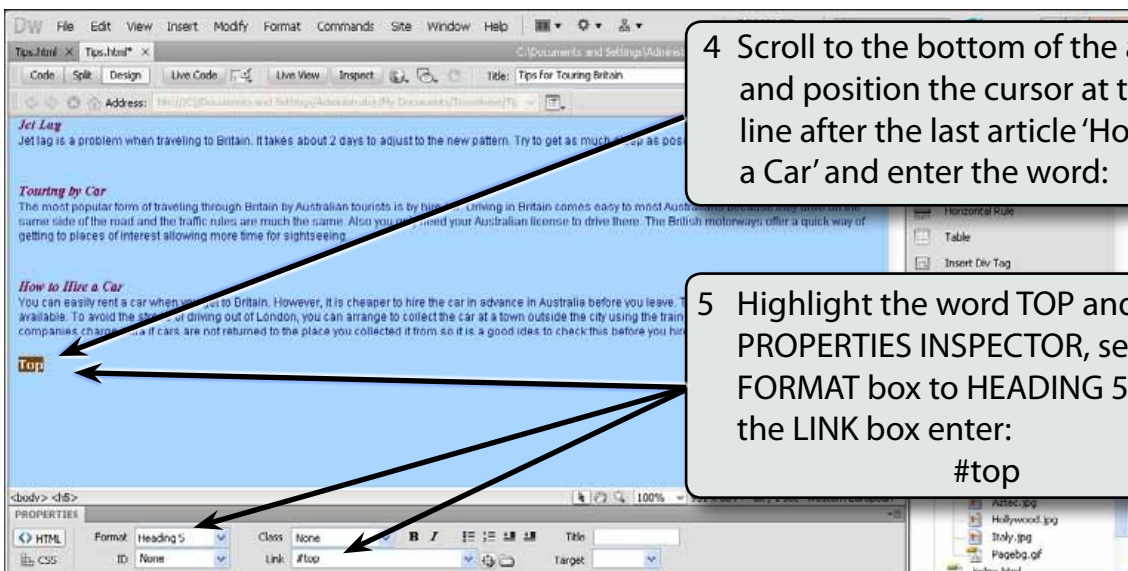


1 Scroll back to the base of the CREDIT CARDS paragraph and position the cursor at the first blank line after it.



2 Enter the text:  
Next Screen  
and highlight the words.

3 In the PROPERTIES INSPECTOR turn on the HTML button then set the FORMAT box to HEADING 5 and in the LINK box enter:  
#page2



4 Scroll to the bottom of the article and position the cursor at the blank line after the last article 'How to Hire a Car' and enter the word: Top

5 Highlight the word TOP and, in the PROPERTIES INSPECTOR, set the FORMAT box to HEADING 5 and in the LINK box enter:  
#top