

# Adjusting the Look of Images

Photoshop offers a range of tools that allow you to adjust the colour and texture of images and photographs.

## Loading a Sample File

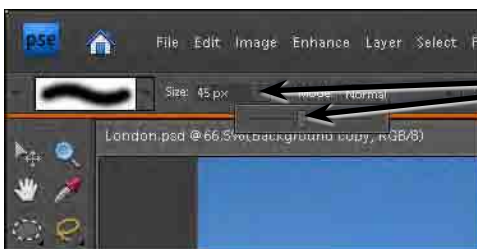
- 1 Load Photoshop Elements in EDIT MODE or close the current file then display the FILE menu and select OPEN.
- 2 Access the PSE7 SUPPORT FILES, open the CHAPTER 7 folder and open LONDON image.

## The Blur Tool

The BLUR TOOL softens hard edges in an image to reduce its details. Let's make one of Big Ben's clocks a little less detailed.

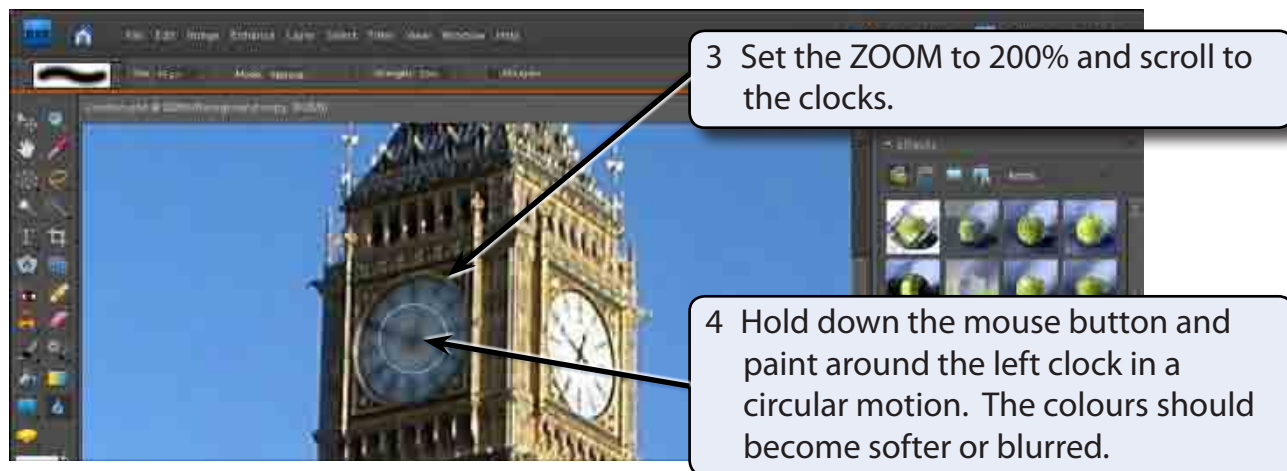


- 1 Click and hold down the mouse button on the second last tool and select the BLUR TOOL.



- 2 In the OPTIONS BAR click on the arrow next to SIZE and set the brush size slider to about 45 pixels.

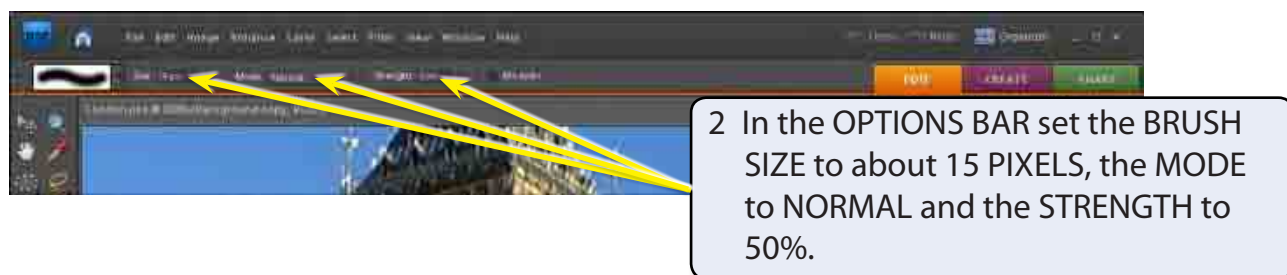
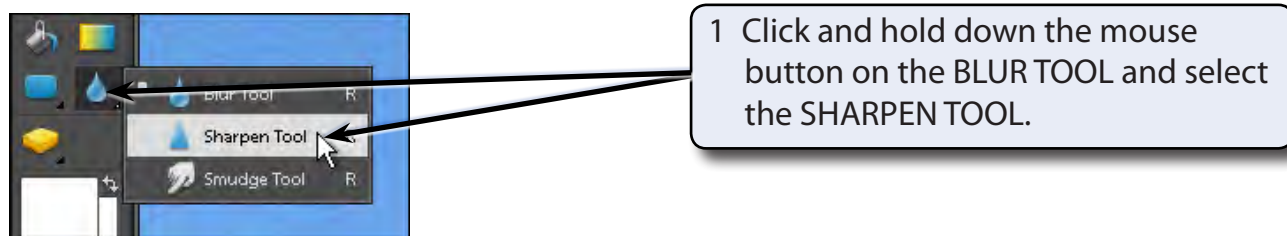
**NOTE:** You can also select a brush from the SHOW SELECTED BRUSH PRESETS box at the left of the OPTIONS BAR.

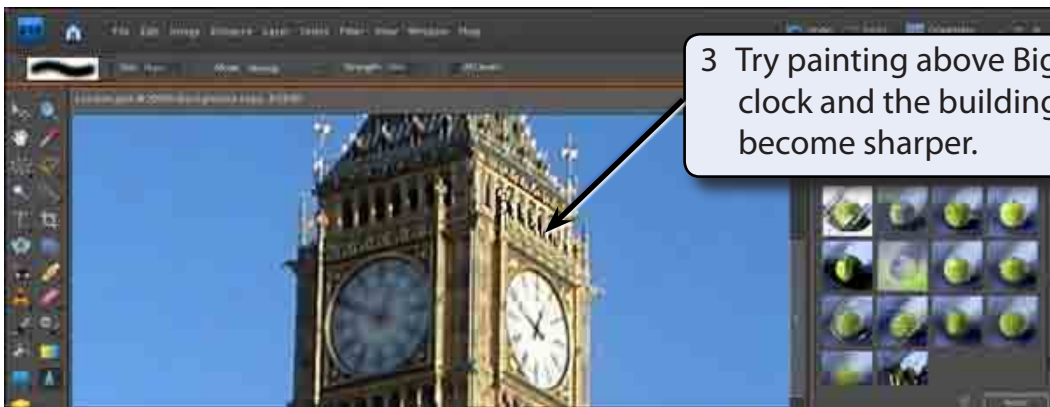


- 5 The items in the OPTIONS BAR allow you to change the MODE, which is the way the paint blends with the pixels, and the STRENGTH of the blur.
- 6 Try a few of the options then press CTRL+Z a few times to undo the changes.

## The Sharpen Tool

The SHARPEN TOOL has the opposite effect to the BLUR TOOL. It sharpens soft edges to increase the clarity or focus.



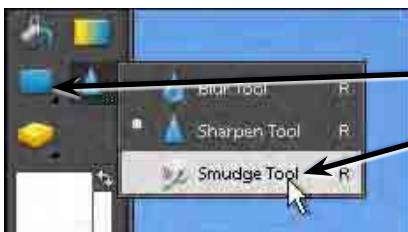


3 Try painting above Big Ben's right clock and the building should become sharper.

- 4 Try some of the other settings in the OPTIONS BAR.
- 5 Press CTRL+Z to undo the changes.

## The Smudge Tool

The SMUDGE TOOL picks up the colour where your cursor is and pushes it in the direction that you drag so that colours run into one another.



1 Click and hold down the mouse button on the SHARPEN TOOL and select the SMUDGE TOOL.



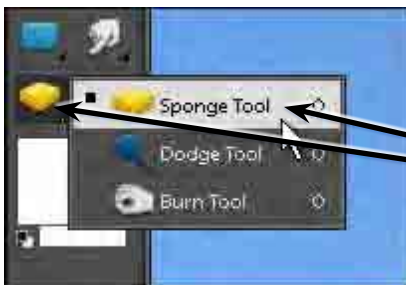
2 In the OPTIONS BAR set the BRUSH SIZE to about 13 PIXELS, the MODE to NORMAL and the STRENGTH to 20%.

3 Try painting around the outside of Big Ben's right clock so that the building becomes less pronounced.

- 4 Again the OPTIONS BAR can be used to adjust the degree of smudging. Experiment with some of the settings then press CTRL+Z to undo the changes.

## The Sponge Tool

The SPONGE TOOL changes the saturation or vividness of colours.



1 Click and hold down the mouse button on the last tool in the TOOLS palette and select the SPONGE TOOL.



2 In the OPTIONS BAR set the BRUSH SIZE to about 35 pixels and the MODE to DESATURATE (this will increase the colour intensity).

3 Drag around the outside of the right clock of Big Ben and its colour should become less pronounced or duller.

**NOTE:** You can increase the FLOW if you want the sponge effect to be more pronounced. The SPONGE TOOL removes colour as you paint.