

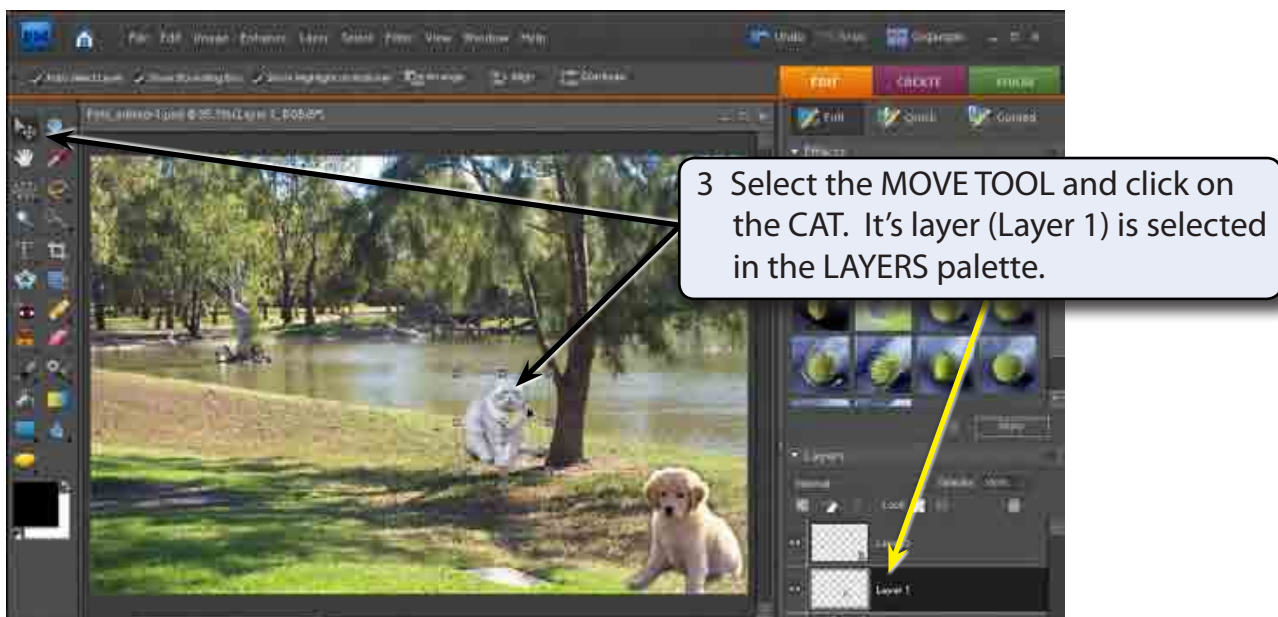
Modifying Images

Photoshop allows you to make extensive changes to graphics. In this chapter we will look at a few examples including distorting images and applying filters and effects.

Selecting the Correct Layer

Each time you pasted an object into the Pets background the new object was placed in a separate layer. So the background is in one layer, the cat in another layer and the dog in a third layer. To edit an object you must select the layer that it is in.

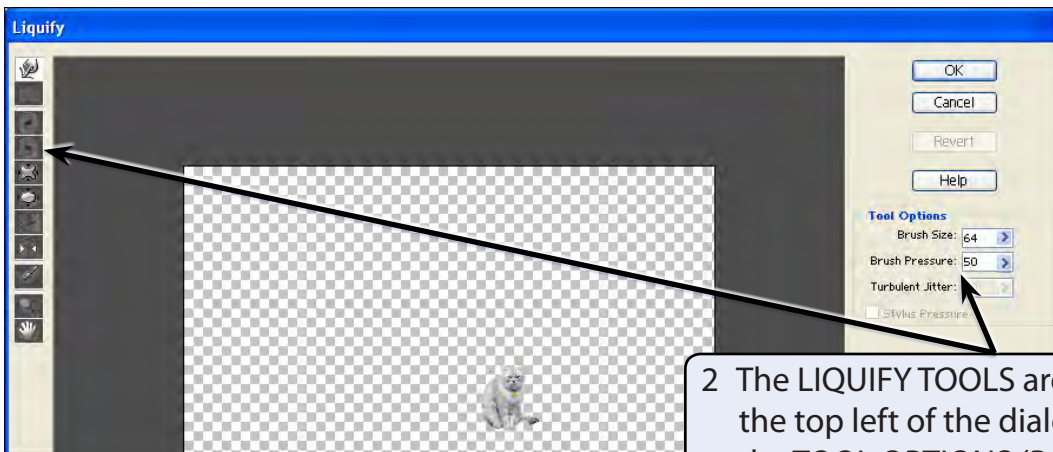
- 1 Load Photoshop Elements in EDIT MODE and open your PETS.PSD file.
- 2 When you wish to edit part of a picture you select the appropriate layer.



The Liquify Filter

The LIQUIFY filter allows you to modify the appearance of an object.

- 1 Display the FILTER menu, highlight DISTORT and select LIQUIFY. The cat should be displayed in the LIQUIFY dialogue box.

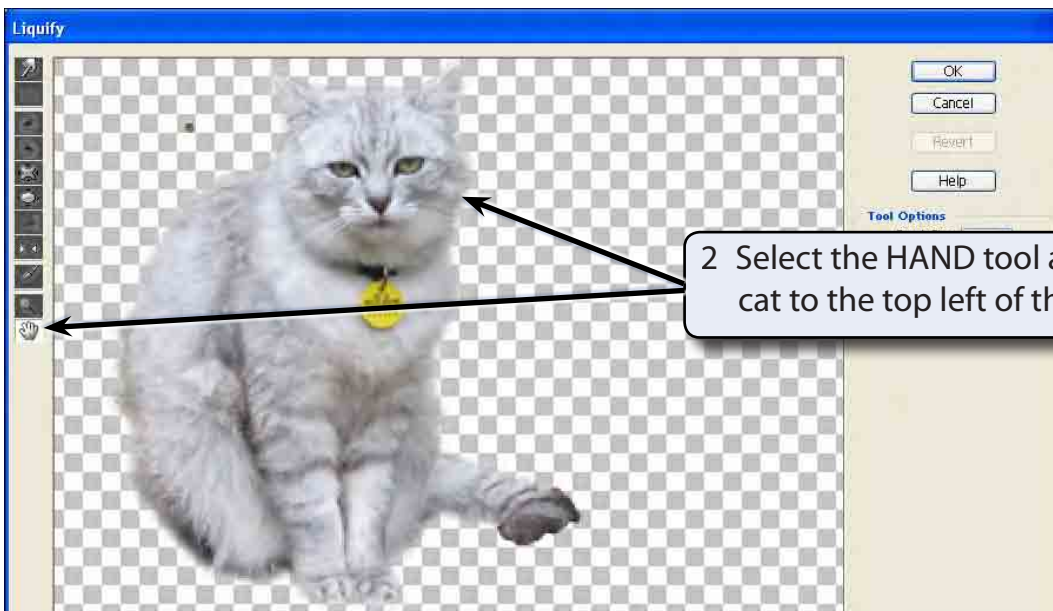


2 The LIQUIFY TOOLS are displayed at the top left of the dialogue box and the TOOL OPTIONS (Brush Size, Brush Pressure, etc.) at the right.

A The Hand Tool

The HAND TOOL allows you to drag the image around the view area.

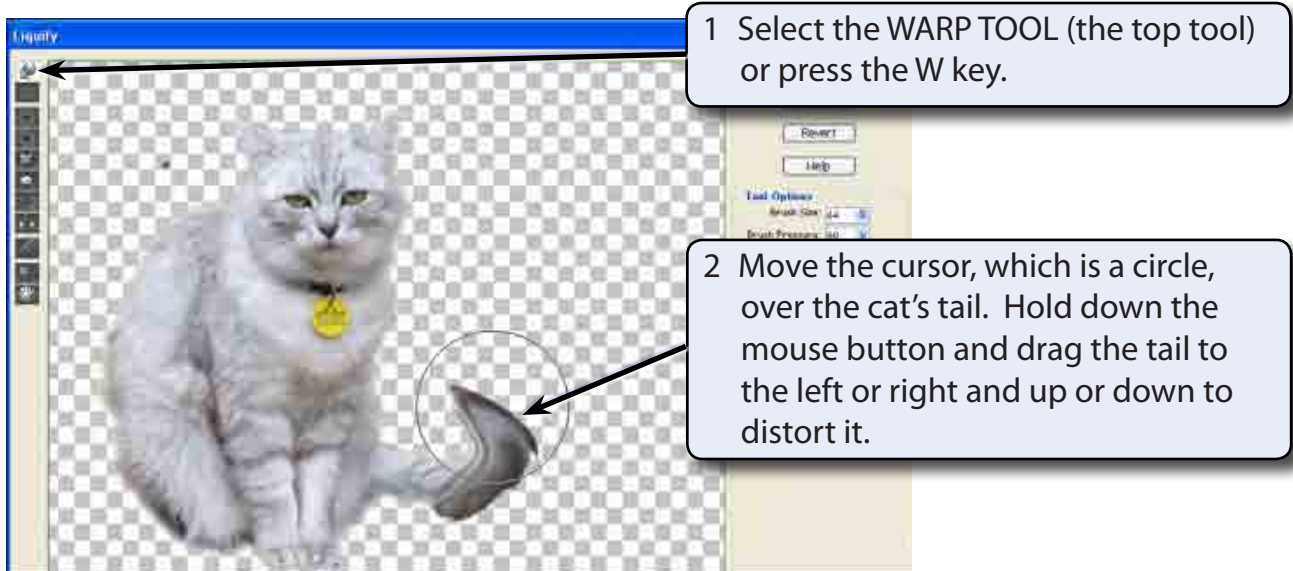
- 1 Press CTRL+ a few times to zoom in on the cat.



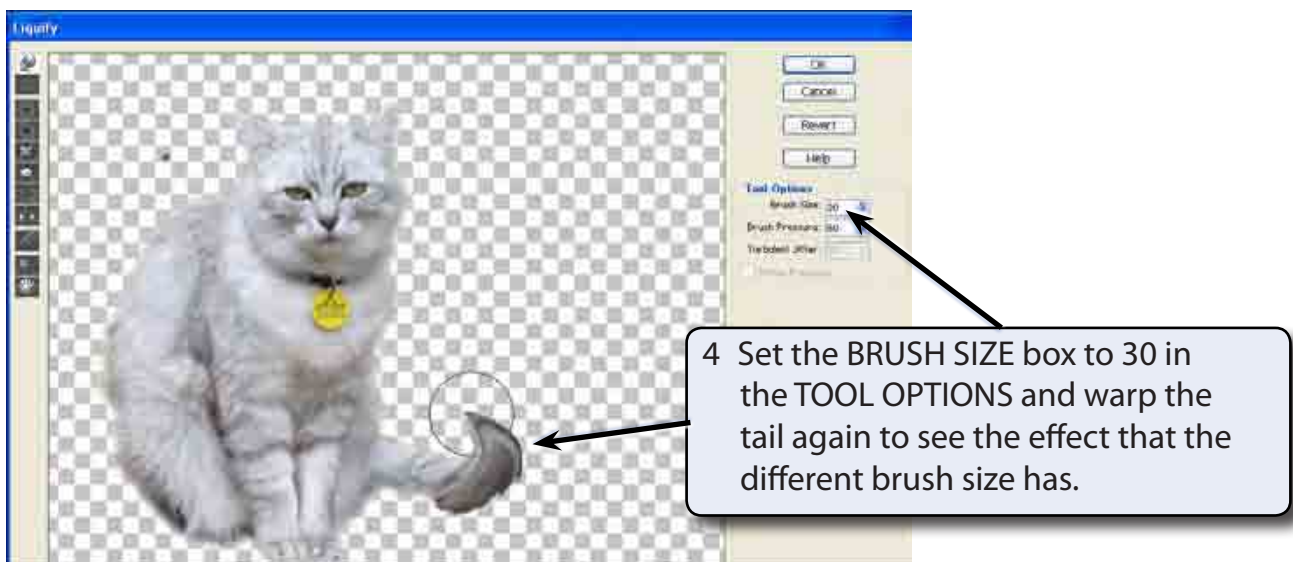
2 Select the HAND tool and drag the cat to the top left of the view area.

B The Warp Tool

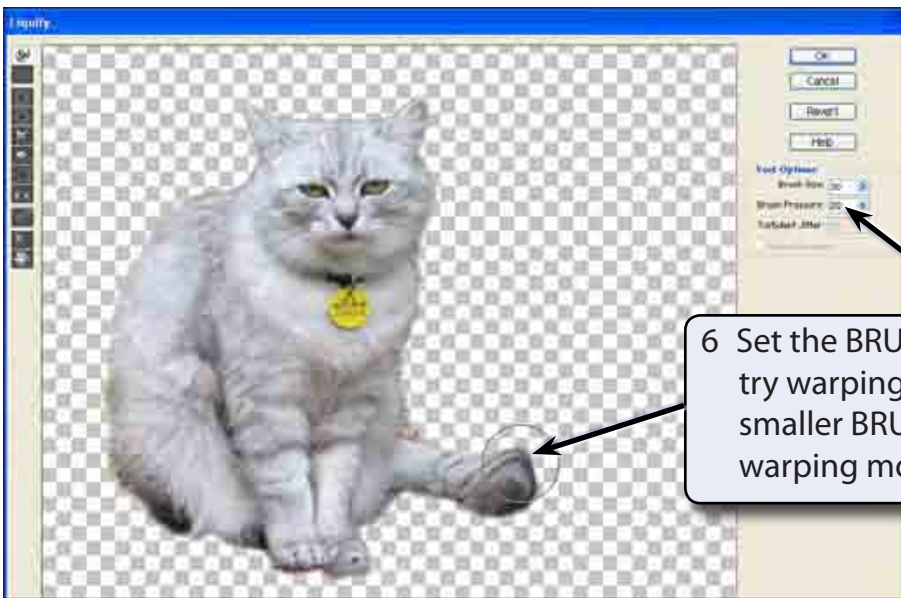
The WARP TOOL pushes pixels (screen units) forward as you drag the mouse.



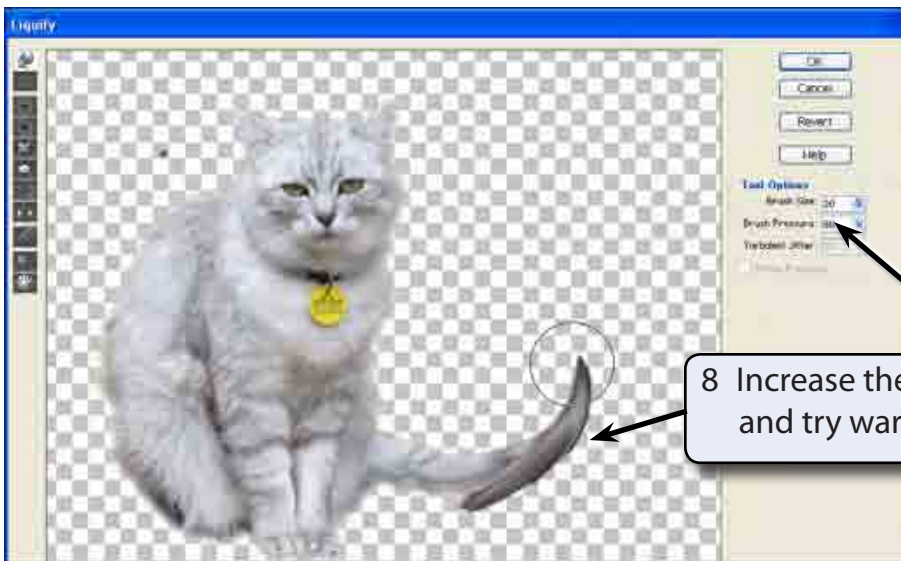
- 3 Click on the REVERT button in the OPTIONS at the right of the dialogue box and the image will be returned to its original state (you can also press CTRL+Z to UNDO the last step of the effect).

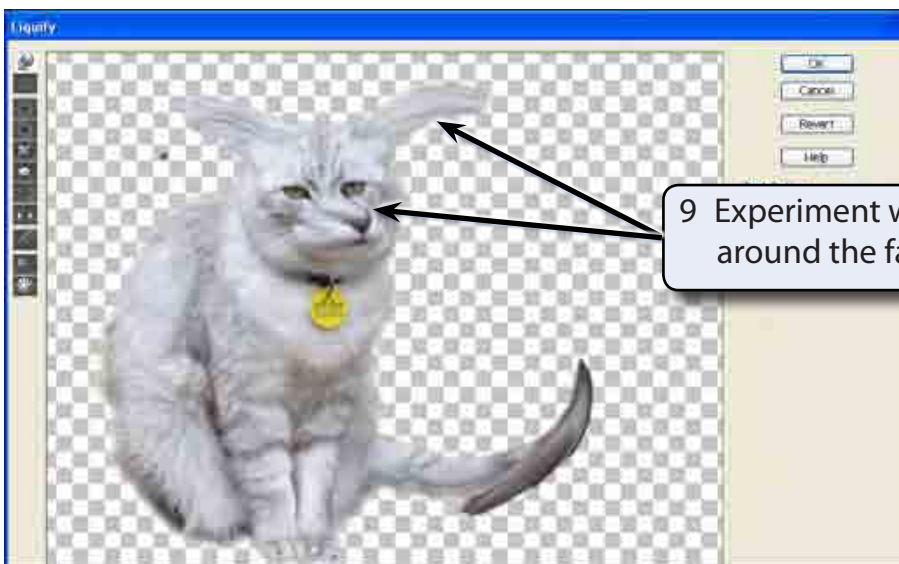


- 5 Click on the REVERT button at the right of the dialogue box or press CTRL+Z to UNDO the effect.



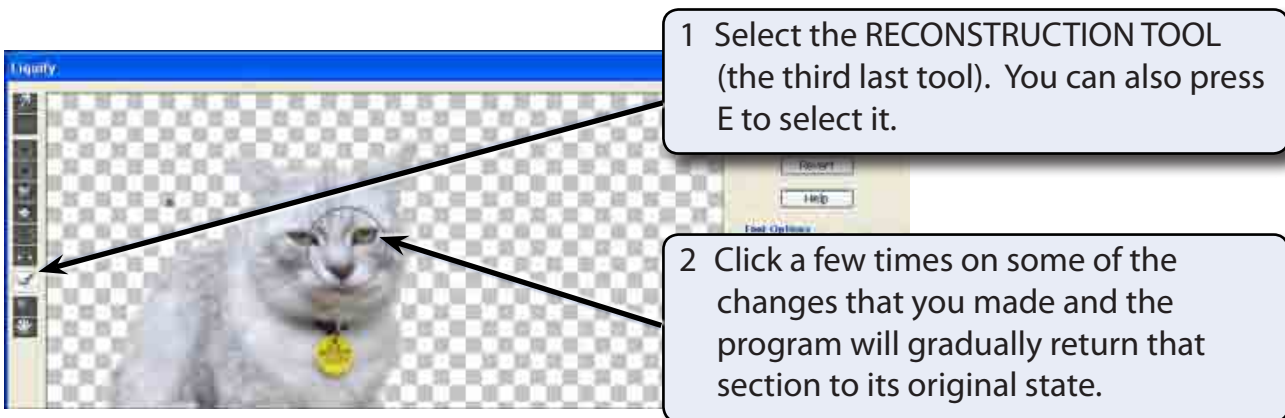
7 Click on the REVERT button to UNDO the effect.





C The Reconstruction Tool

The RECONSTRUCTION TOOL gradually rebuilds parts of your image back to its original state. It is very handy if you change the image more than you intended and you just want sections to be a little less pronounced.



3 Click on the REVERT button to restore the image to the original shape.