

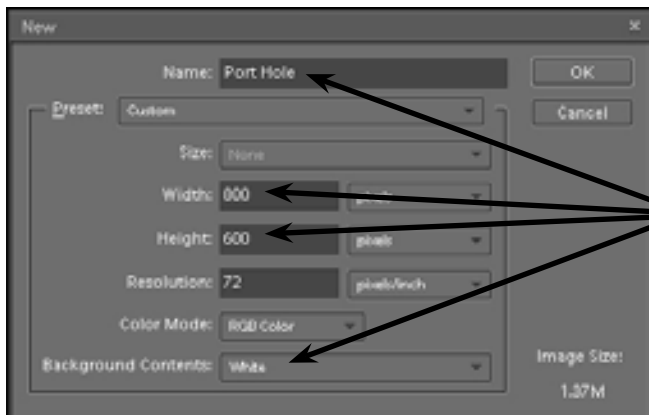
Artistic Filters

You can use the filters that Photoshop provides to create artistic sketches. To illustrate this, the following sketch of a shipwreck viewed through the porthole of another ship will be created:



Starting a New Document

- 1 Load Photoshop Elements, display the FILE menu, highlight NEW and select BLANK FILE.

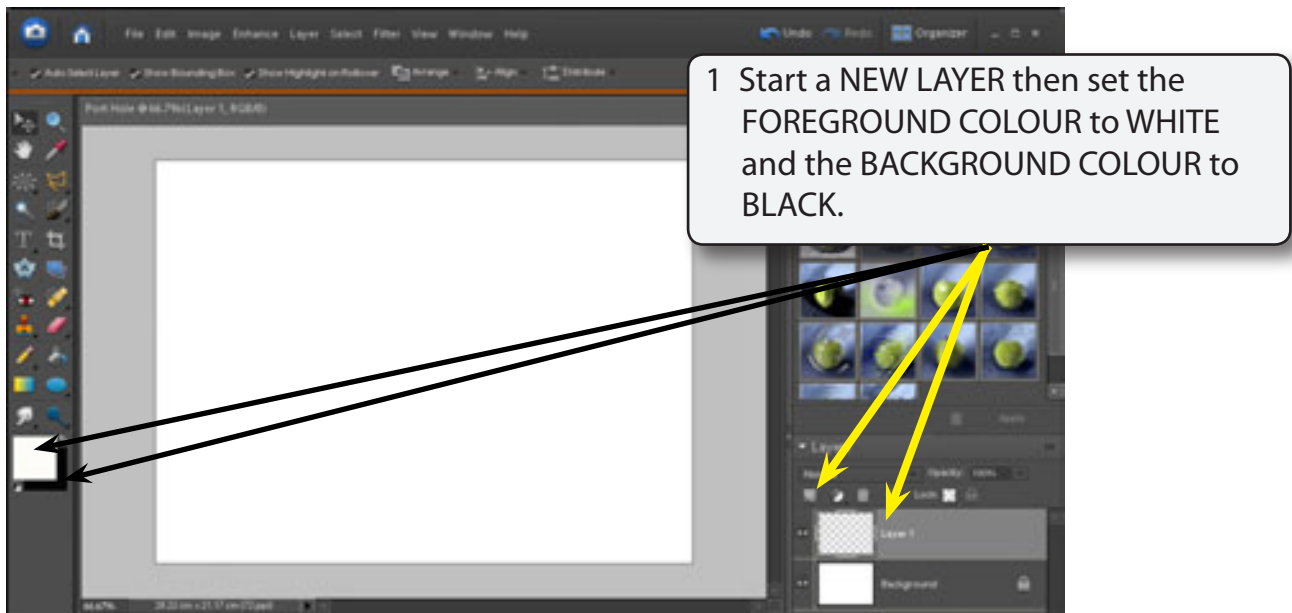


- 2 Set the NAME to PORT HOLE, the WIDTH to 800 pixels, the HEIGHT to 600 pixels and the BACKGROUND COLOUR to WHITE.

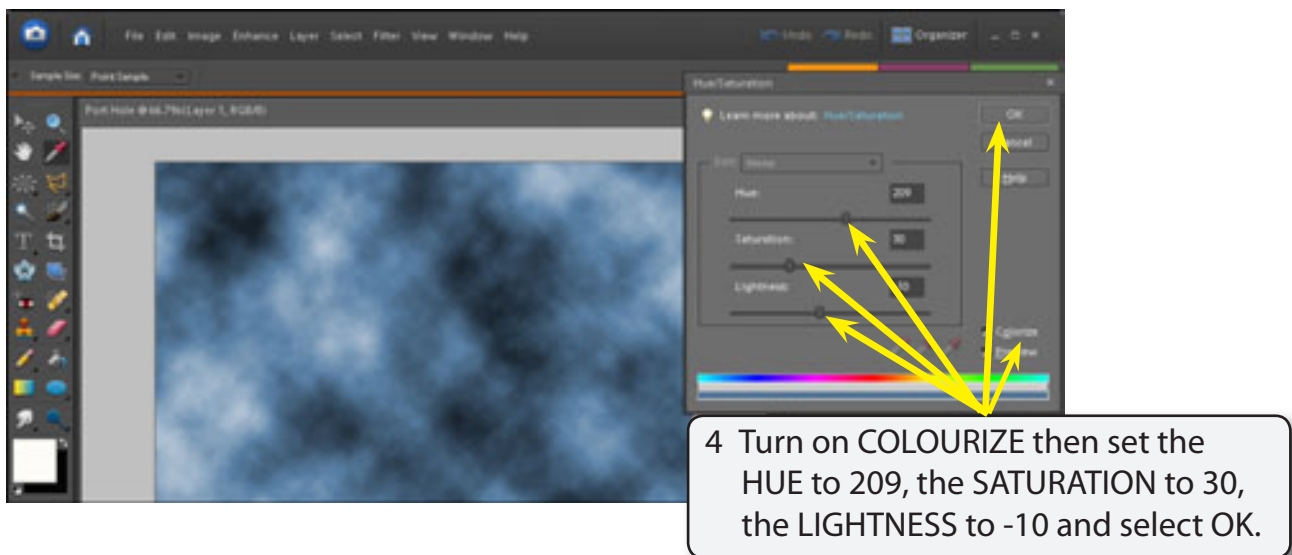
- 3 Select OK to start the document.

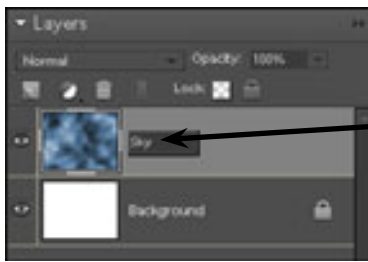
Setting the Background

The CLOUDS filter will be used to create the sky for the sketch.



- 2 Display the FILTER menu, highlight RENDER and select CLOUDS to fill the layer with black and white colours.
- 3 The clouds can be coloured to make them look more natural. Display the ENHANCE menu, highlight ADJUST COLOUR and select ADJUST HUE/SATURATION.

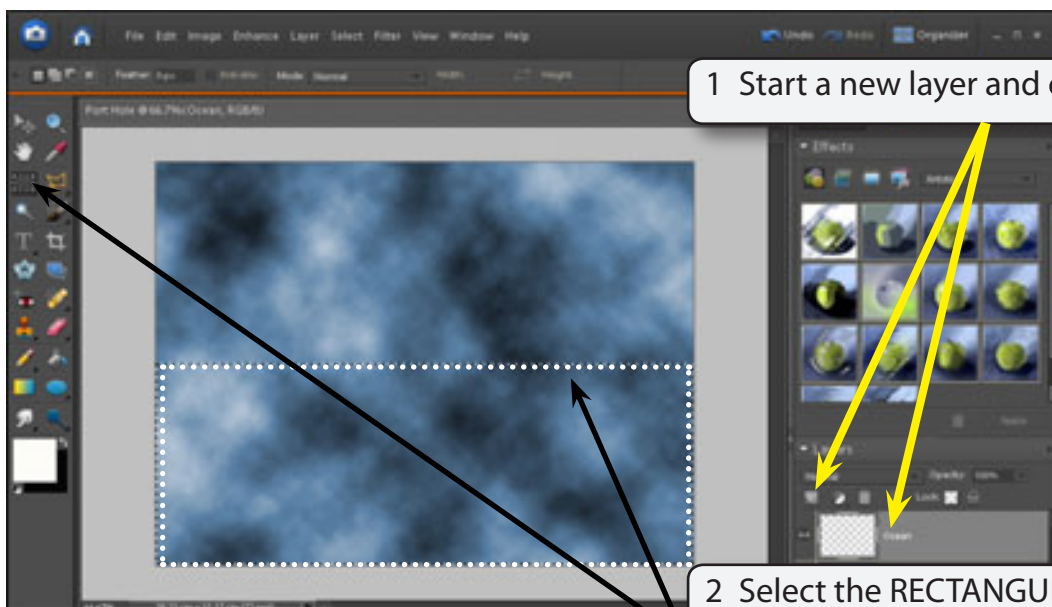




5 Rename the layer: Sky

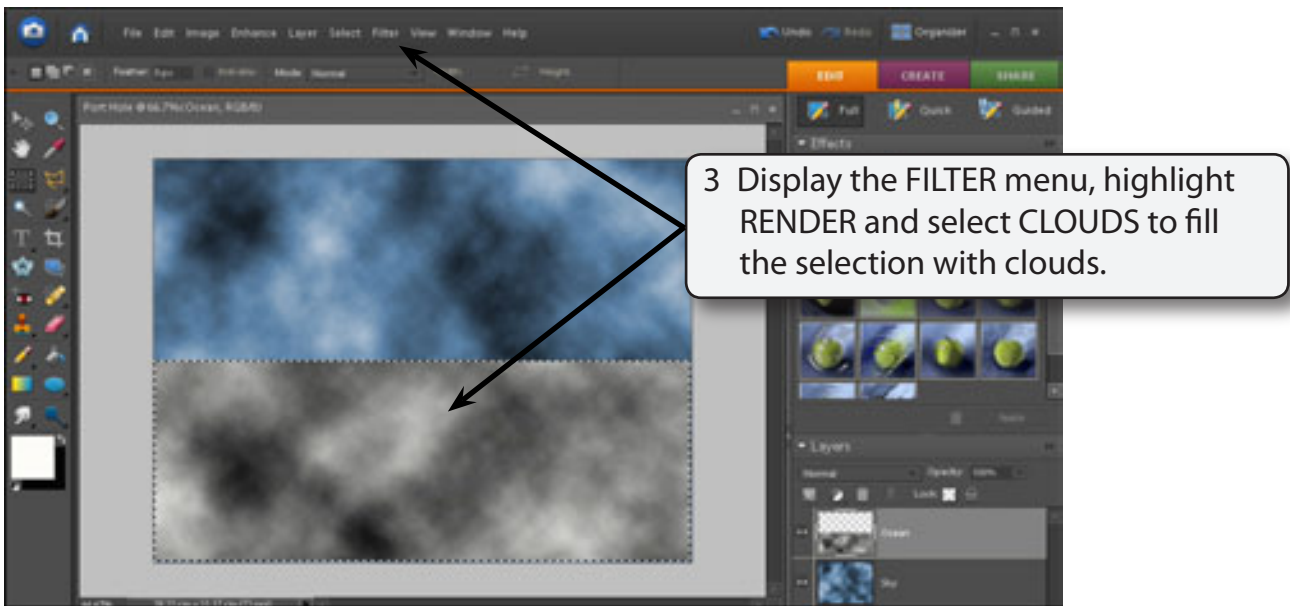
Creating the Ocean

The ocean can be created by combining the CLOUDS and BAS RELIEF filters.

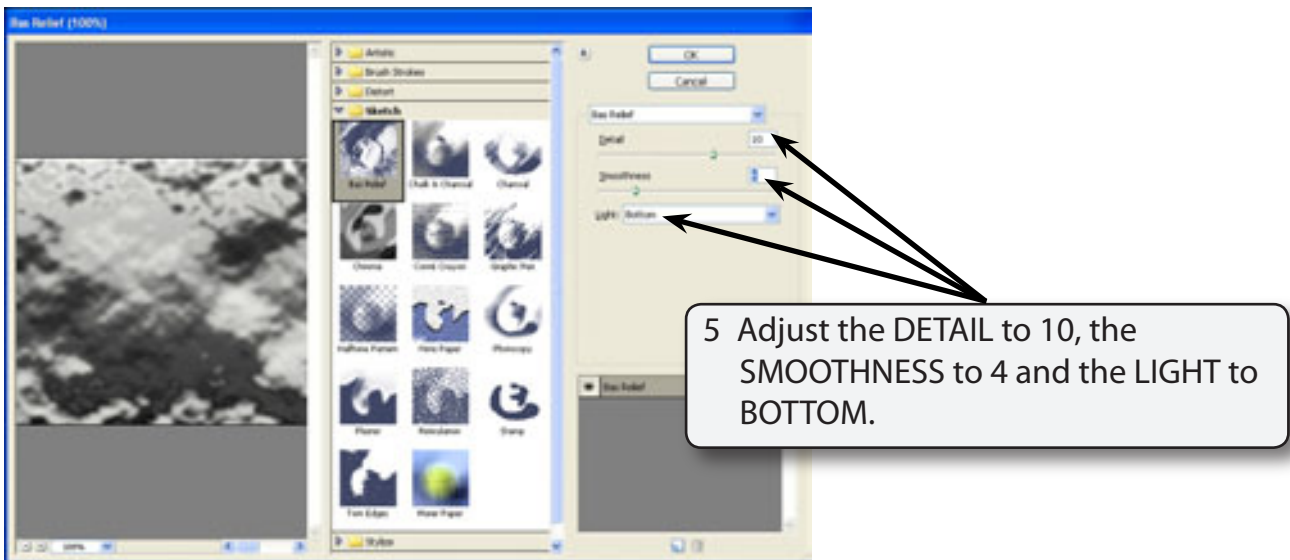


1 Start a new layer and call it: Ocean

2 Select the RECTANGULAR MARQUEE TOOL and drag a frame around the bottom half of the sky.

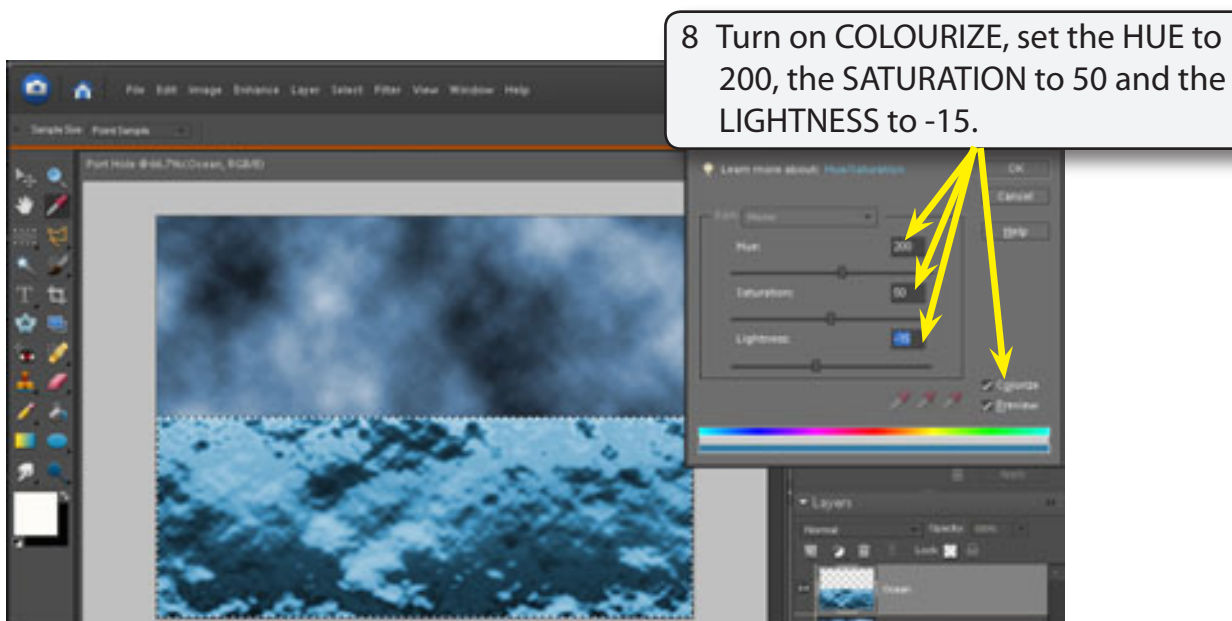


4 Display the FILTER menu again, highlight SKETCH and select BAS RELIEF.



6 Select OK to set the filter.

7 The colour of the ocean needs to be adjusted. Display the ENHANCE menu, highlight ADJUST COLOUR and select ADJUST HUE/SATURATION.



- 9 Select OK to complete the filter.

Adding Perspective to the Ocean

To make the ocean look more realistic, its perspective can be altered.

- 1 Set the screen view to 50% so that you can see the whole canvas.
- 2 Display the IMAGE menu, highlight TRANSFORM and select PERSPECTIVE.

