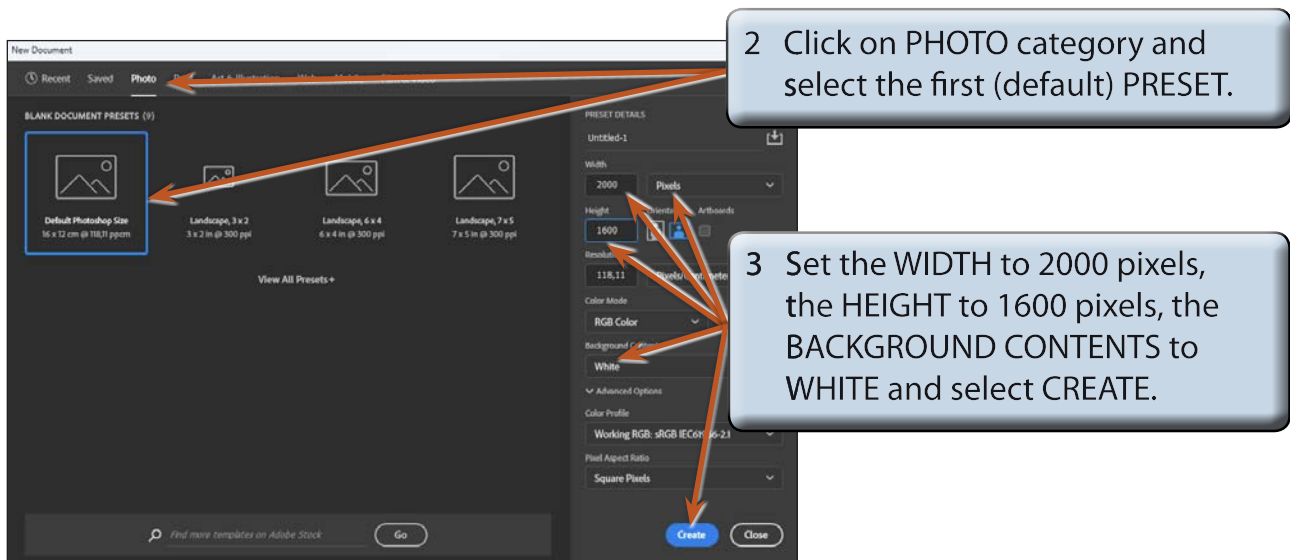


Adding Text to Designs

Text can be added to photographs and manipulated. There are text effects available to curve letters, display them vertically, set text to follow a path and applying similar effects to those you added to shapes in the last few chapters.

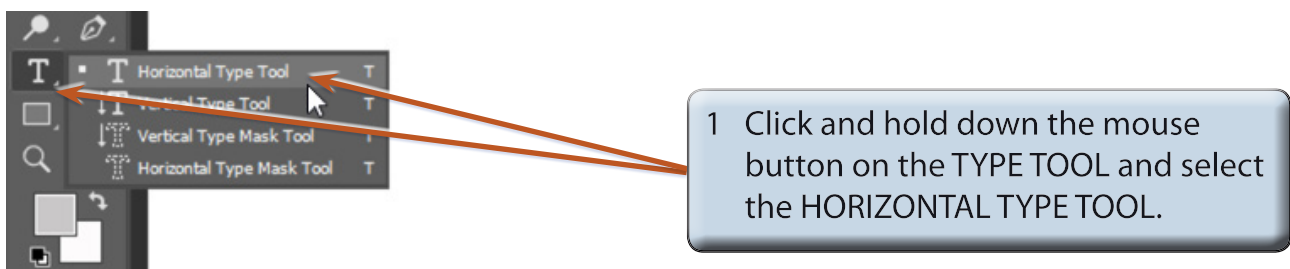
Starting a New Document

- 1 Load Photoshop or close the current file and select NEW FILE from the WELCOME screen or select NEW from the FILE menu.



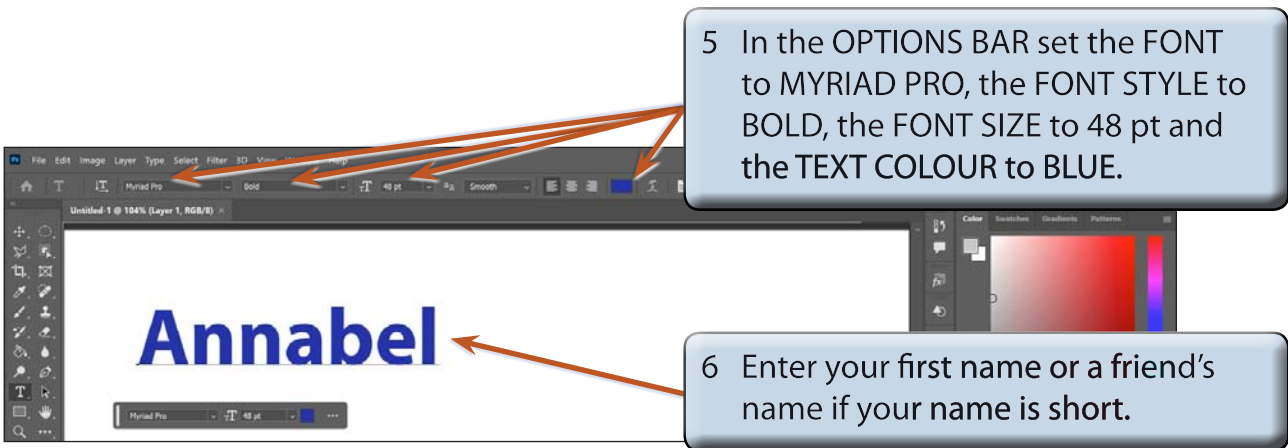
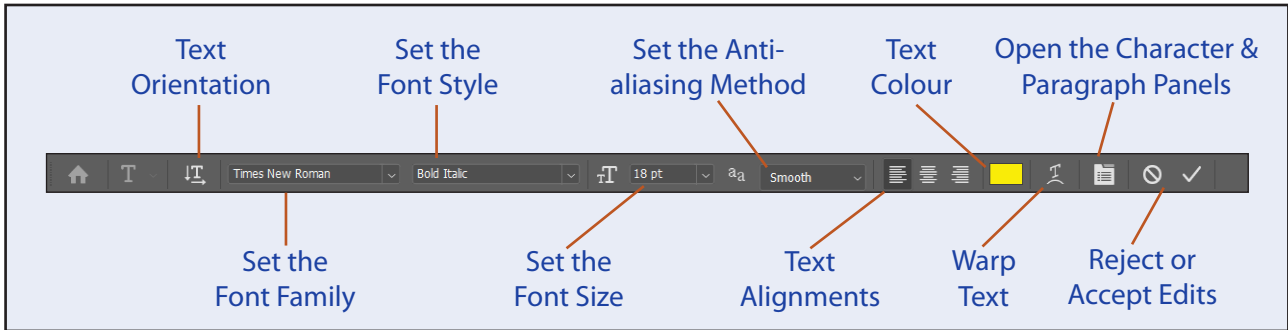
Entering Text

The TEXT TOOLS are housed within the TYPE TOOL in the TOOLS panel.



- 2 Set the VIEW to FIT ON SCREEN by pressing **CTRL+0** on the Windows system or **COMMAND+0** on the Macintosh system.

- 3 Click the cursor (which is now an I-Beam) near the top left of the canvas.
- 4 The OPTIONS BAR should display the text options which are labelled in the following diagram.



NOTE: A text layer is created in the LAYERS panel when you click the I-Beam on the canvas.

Altering Text

You can alter text or its format once it has been entered.

- 1 Highlight the name by dragging the I-Beam across the letters or by double clicking on the letters.

2 Set the FONT SIZE to 36 pt then set the TEXT COLOUR to RED.

3 Click on the COMMIT button to accept the changes.

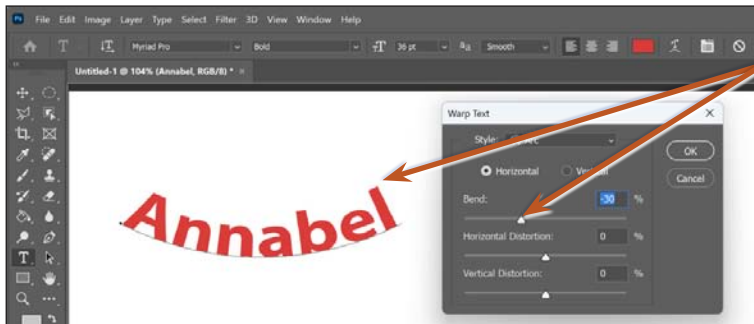
Warping Text

There are a number of curved effects that can be applied to the text. These are found in the CREATE WARPED TEXT button in the OPTIONS BAR.

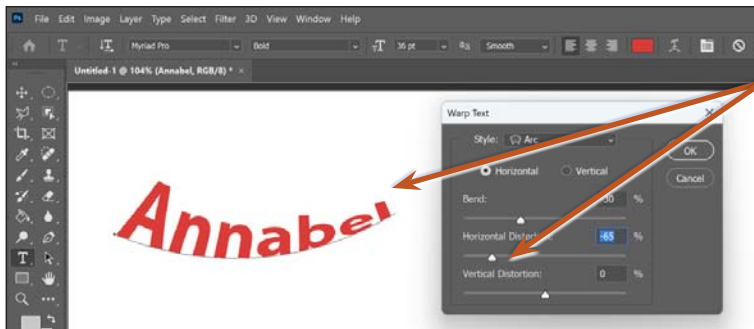
A Single Arced Text

1 Click the I-Beam anywhere in the name then click on the CREATE WARPED TEXT button in the OPTIONS BAR to open the WARP TEXT dialogue box.

2 Set the STYLE box to ARC and move the WARP TEXT dialogue box so that you can see the name, which should now be curved.

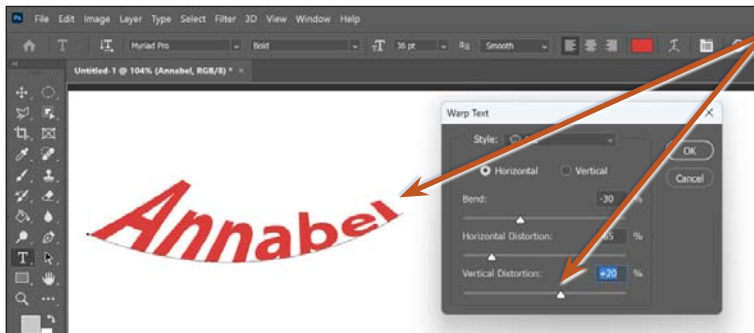


3 Move the BEND slider and the size and direction of the arc will change. Set it to a negative value.



4 Decrease the HORIZONTAL DISTORTION and the letters should start large and curve to smaller.

NOTE: The reverse occurs if you increase the HORIZONTAL DISTORTION.



5 Increase the VERTICAL DISTORTION and the angle of the letters will be altered.