

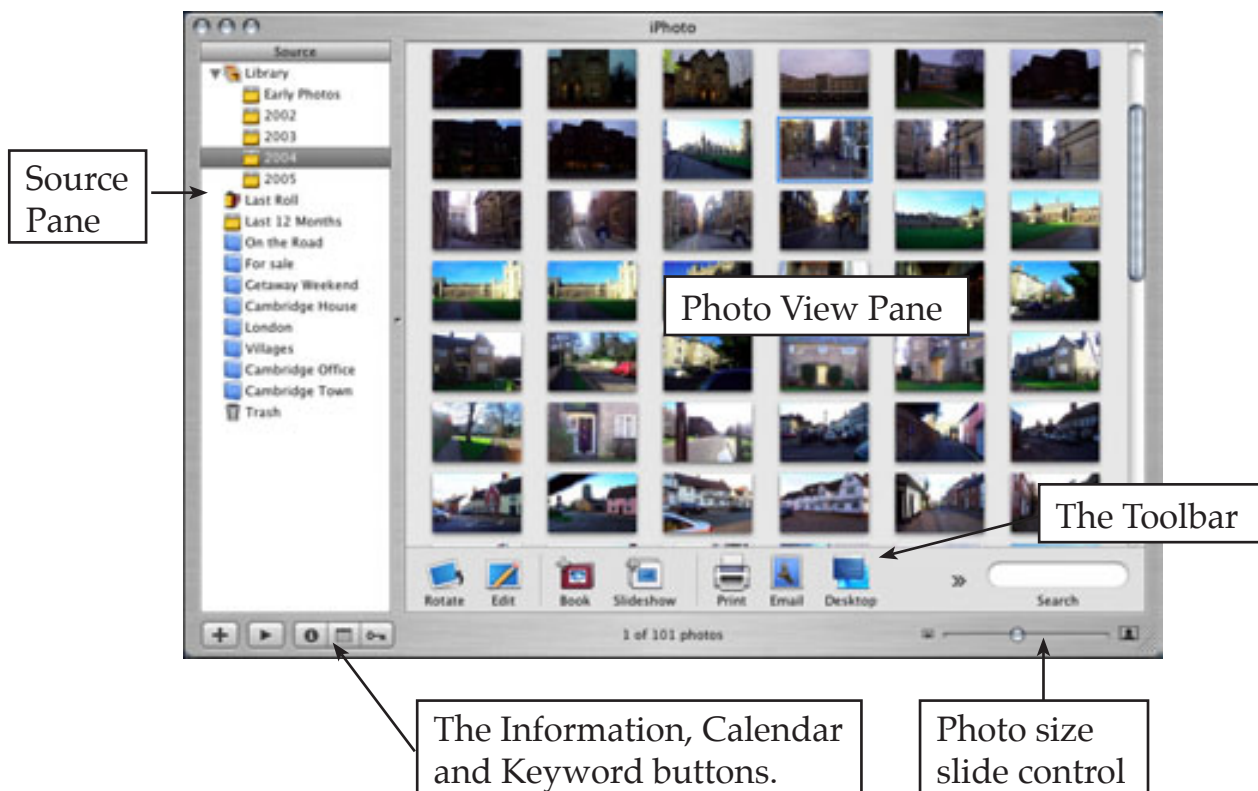
Introduction to iPhoto

iPhoto is a program that allows you to manage and edit photos. These photos can be imported from other programs, scanned using a Scanner or imported directly from a digital camera. Photos can be placed in groups (Photo Albums), rotated, cropped, improved, placed into slide shows or books or exported to other programs.

iPhoto is a support program to more detailed photo editing programs such as Adobe Photoshop.

Starting iPhoto

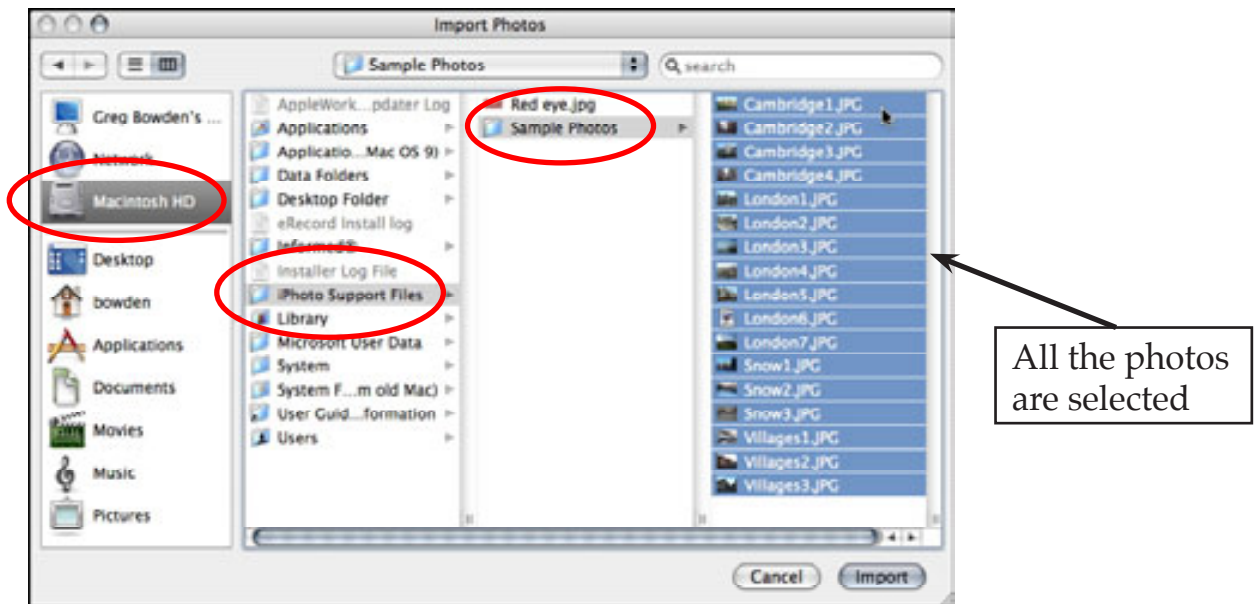
- 1 Load iPhoto and the iPhoto ORGANISER VIEW should be displayed. There might not be any photos in the PHOTO VIEW PANE.
- 2 The following diagram labels its sections.



Importing Some Sample Photos

Some sample photos have been prepared for you so that you can learn the sections of iPhoto. These photos will need to be imported into iPhoto. Later on you should be able to use a digital camera to take your own photos and import them.

- 1 Display the FILE menu and select ADD TO LIBRARY.
- 2 Access the iPHOTO SUPPORT FILES and open the SAMPLE PHOTOS folder.
- 3 Click on the first photo and press **⌘+A** to highlight all the photos.



- 4 Click on the IMPORT button and all the photos should be inserted into the photo library.



Adjusting the Size of the Photo Thumbnails

You can adjust how big the photo thumbnails are using the PHOTO SIZE SLIDE CONTROL at the bottom right of the screen.

- 1 Move the slider to the right to increase the size of the photos. If you have a large number of photos in your library you see less photos on the screen when you do this.



- 2 Drag the slider to the left to decrease the size of the thumbnails. This allows you to display more photos on the screen.



- 3 Set the slider to a position you prefer.

Looking at the Folders

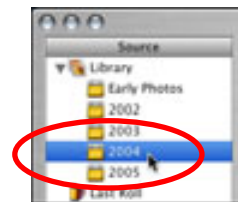
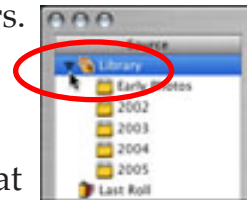
You can view your photos in a number of different folders.

- 1 Click on the ARROW next to LIBRARY in the SOURCE pane to display the photo year folders.
- 2 Most of the photos were taken in 2004 so click on that folder and most of the photos should be displayed.

NB: i iPhoto can show photos from your library in many different places.

- ii **The LAST 12 MONTHS folder will show any photos taken in the last year.**

- 3 Click on the LIBRARY or LAST ROLL folders to display all your photos.



Looking at Individual Photos

You can look at each photo individually, and make adjustments to those photos as you will see in a later chapter.

- 1 Double click on the first photo and the screen will change to EDIT VIEW with the photo enlarged and thumbnails across the top of the screen.

