

# Adding Motion and Video Effects

There are two general kinds of special effects that you can easily add to your movie:

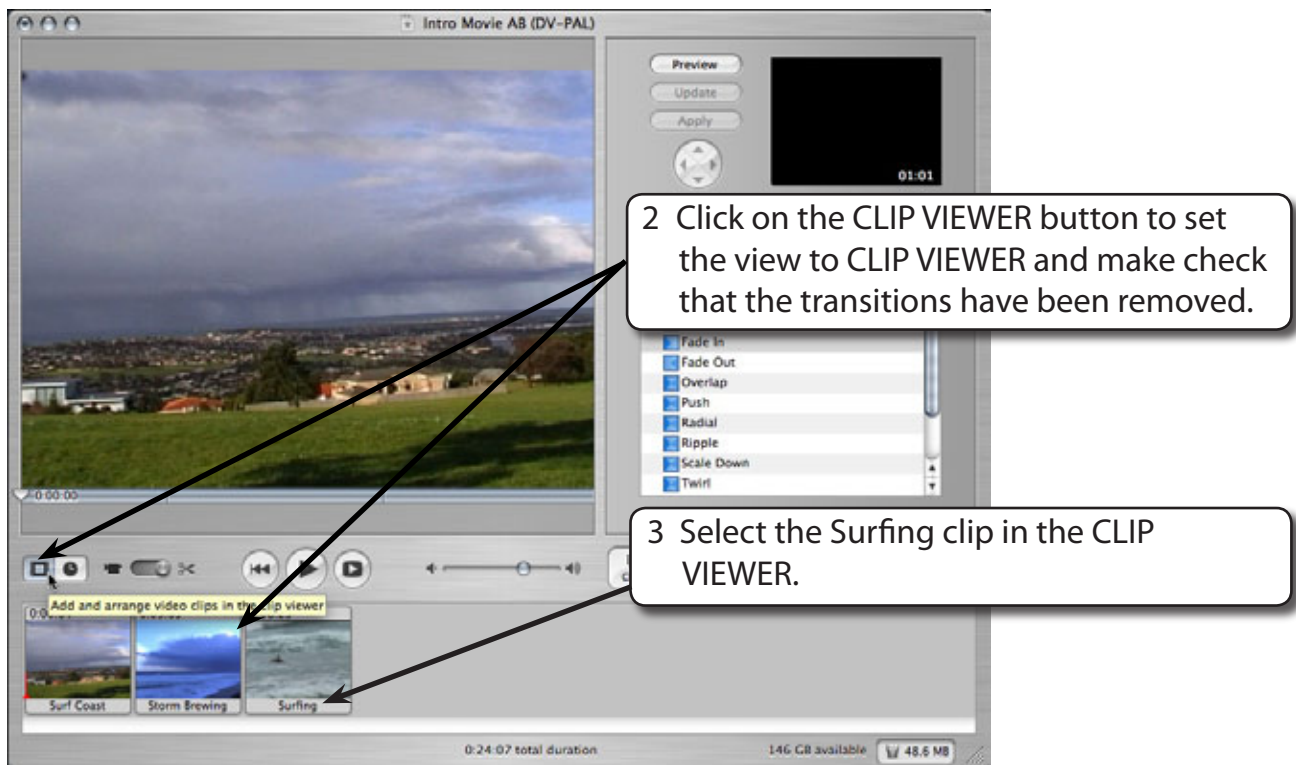
- Adding a MOTION EFFECT to speed up, slow down or make the movie clip play in reverse.
- Adding a VIDEO EFFECT to change the colour and feel of your footage, for example, adding a sepia tone for an “old-fashioned” feel, or add rain or fog.

## Motion Effects

### A Making a Clip Play in Reverse

You can make a video clip play in reverse.

- 1 Load your INTRO MOVIE AB project.

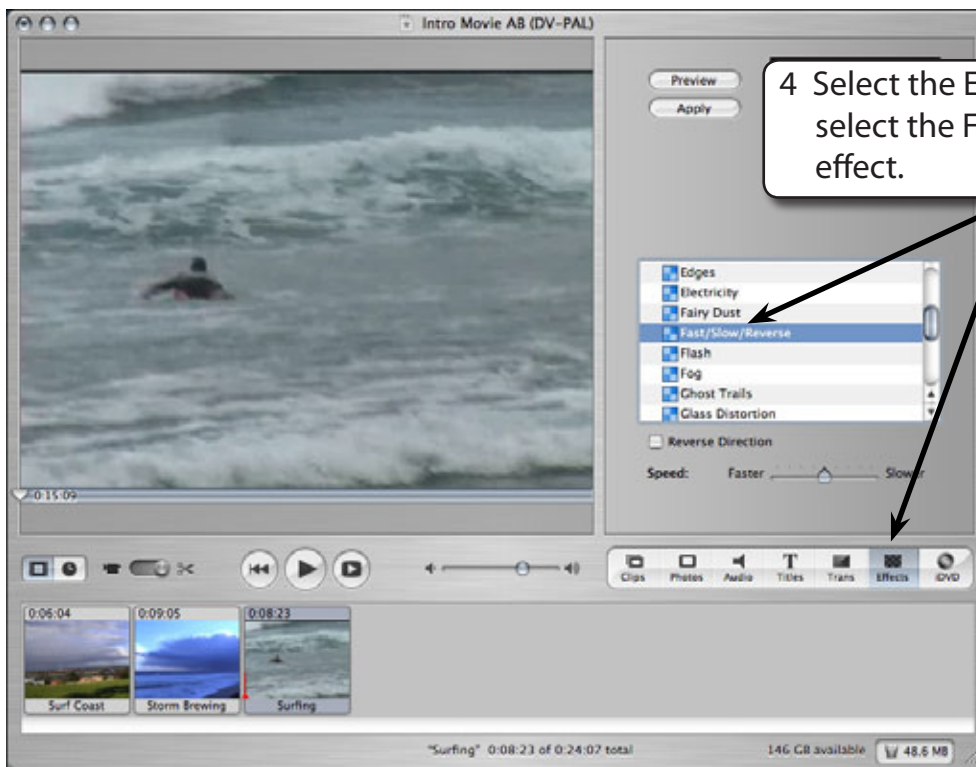


The screenshot shows the iMovie interface with the 'Intro Movie AB (DV-PAL)' project open. The main preview window displays a landscape scene. Below it, the 'Clip Viewer' pane is active, showing a list of video clips: 'Surf Coast', 'Storm Brewing', and 'Surfing'. The 'Surfing' clip is selected. To the right of the clip viewer, a list of video effects is visible, including 'Fade In', 'Fade Out', 'Overlap', 'Push', 'Radial', 'Ripple', 'Scale Down', and 'Twirl'. A 'Preview' button is located above the effects list. Two callout boxes with arrows provide instructions: the first points to the 'Clip Viewer' button and the effects list, and the second points to the 'Surfing' clip.

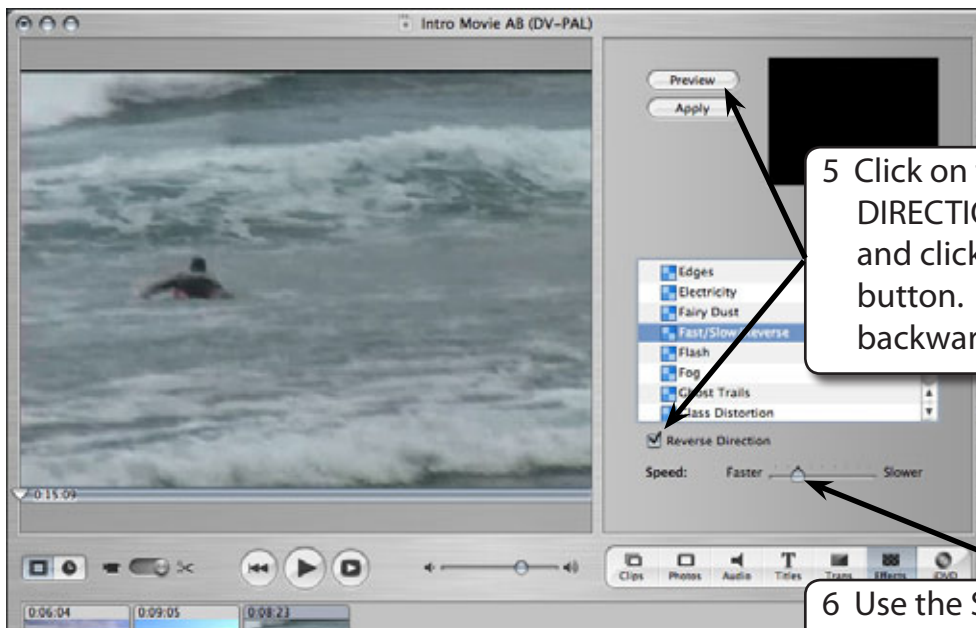
2 Click on the CLIP VIEWER button to set the view to CLIP VIEWER and make check that the transitions have been removed.

3 Select the Surfing clip in the CLIP VIEWER.

**NOTE:** You can select a clip in the CLIP VIEWER, the TIMELINE VIEWER or CLIPS PANE when you wish to apply an effect.



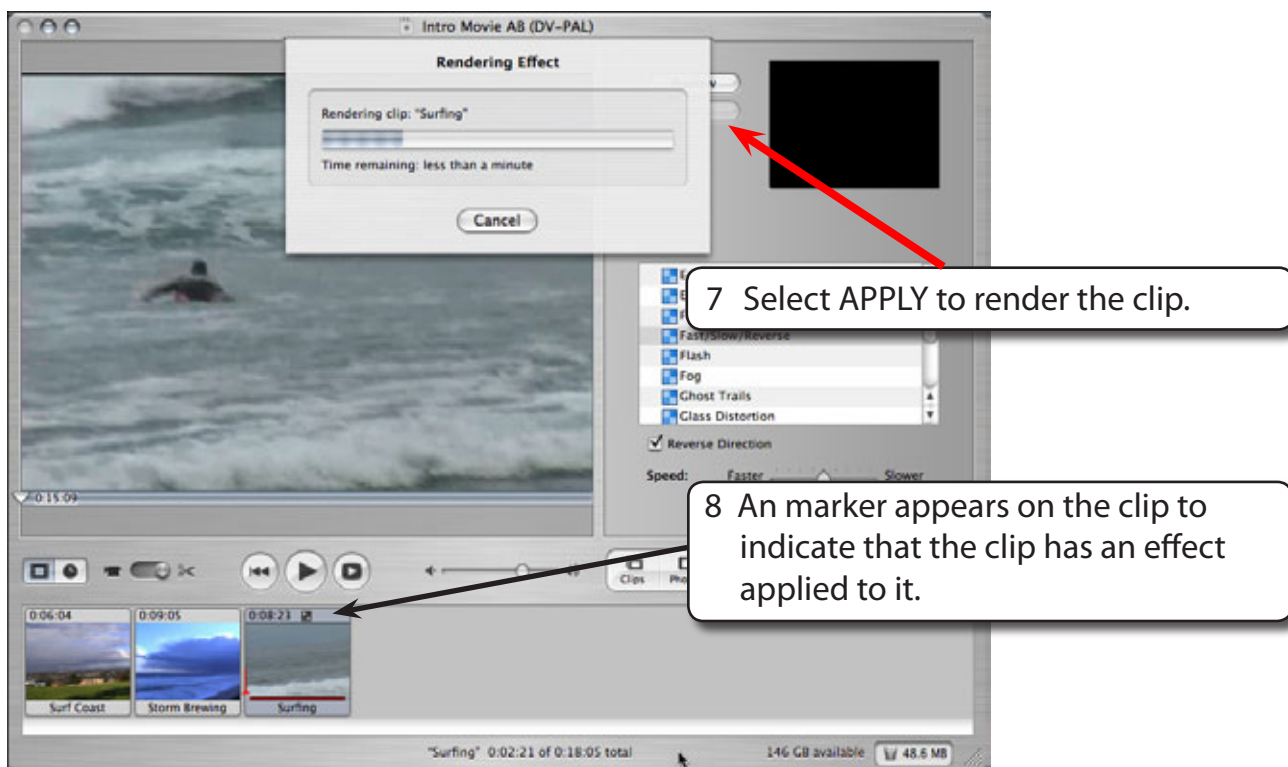
4 Select the EFFECTS tab and select the FAST/SLOW/REVERSE effect.



5 Click on the REVERSE DIRECTION check box and click on the PREVIEW button. The clip should play backwards.

6 Use the SPEED slider to slow down or speed up the clip.

**NOTE:** The PREVIEW may have difficulty displaying the reverse direction clip if you set it to run too fast.



- 9 Click on the first clip, click on the grey area of the screen and click on the PLAY button to play all the clips. The SURFING clip should play in reverse.

**NOTE: The movie clip takes some time to render because it has over a hundred frames to change.**

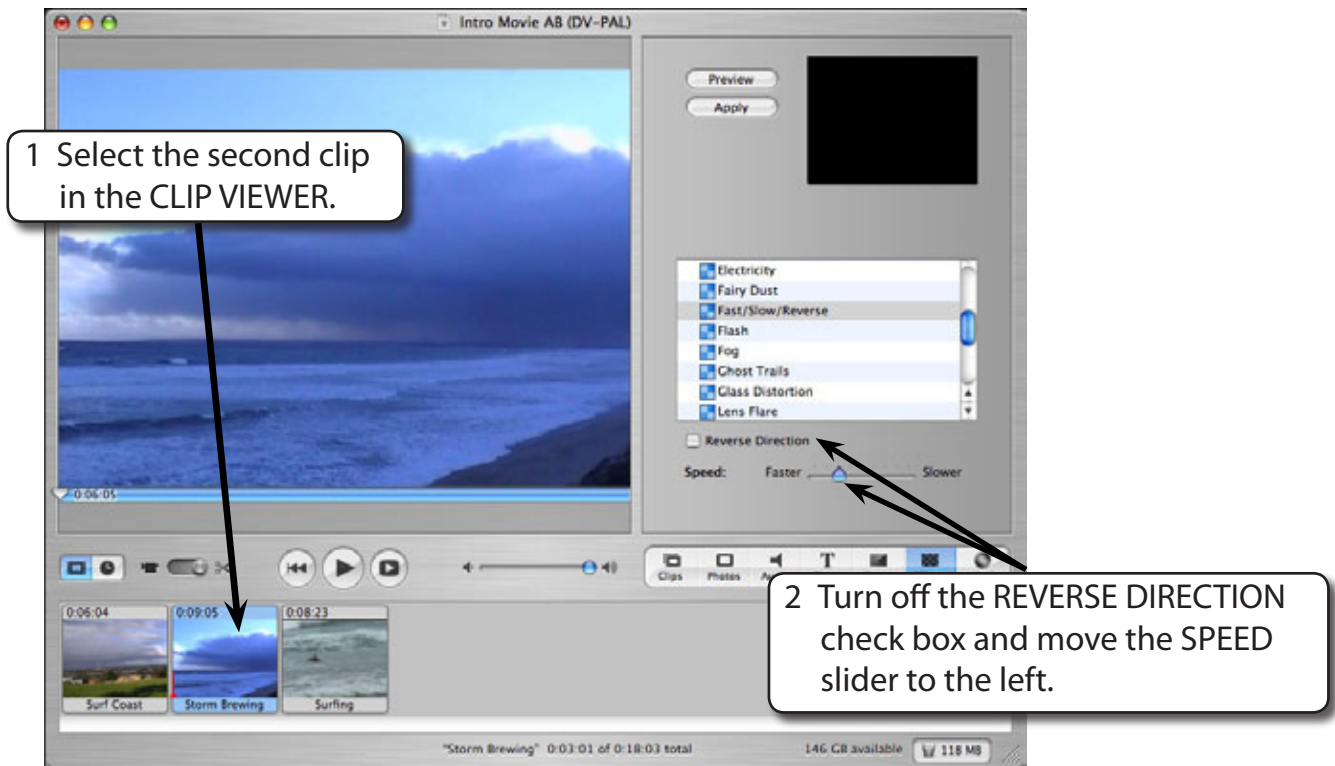
## B Removing Effects

You can remove an effect if you haven't saved the movie project or emptied the iMovie Trash since you rendered the effect. If you've done either of these things, you'll have to start again with a new clip if you don't want to keep the effect. Let's remove the effect you just added to the SURFING clip.

- 1 The SURFING CLIP should still be selected in the Clip Viewer.
- 2 Display the ADVANCED menu and select REVERT CLIP TO ORIGINAL.
- 3 Play the movie to check that the clip has been returned to its original state.

## C Fast or Slow Motion

You add speed up or slow down the motion of a video clip.



**NOTE:** Moving the speed slider one tick to the left doubles the speed of your video clip. Moving the speed slider two ticks to the left trebles the speed of your video clip. The same applies to slowing down a clip.

- 3 Select APPLY followed render the clip.
- 4 Play the clip to see the fast motion effect in the iMovie monitor.