

## Tabbed Interfaces

As databases become larger it is impossible to show all the data on the one data entry screen. To overcome this problem fields can be placed in hidden regions on a layout and those regions opened by clicking on a tab. It is called a **TABBED INTERFACE**. The tabs act like buttons.

In this case we will add simplified tabbed sections to the bottom of the **LIBRARY ENTRY** layout that you used in the last chapter.

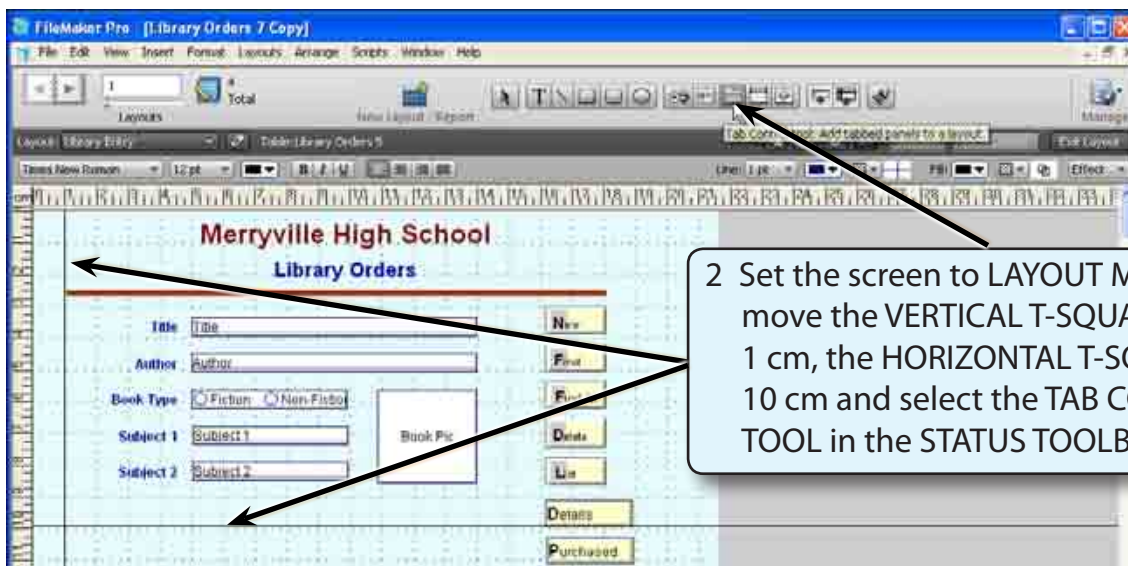
- 1 Load FileMaker Pro 10, click on **OPEN DATABASE** and select **BROWSE FILES**. Or close the current file and select **OPEN** from the **FILE** menu.
- 2 Access your **FMP10 FILES** folder and open:

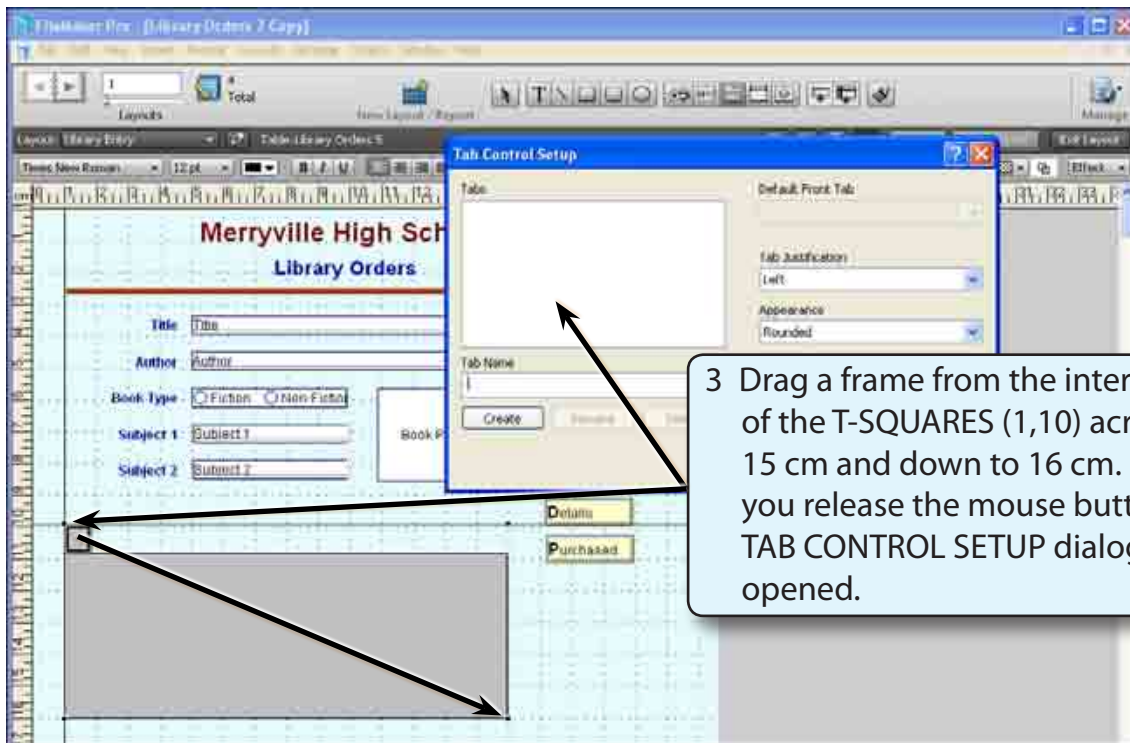
Library Orders 7 Copy

## Inserting the Tab Control

The **TAB CONTROL TOOL** from the **STATUS TOOLBAR** is used to create the **TABBED INTERFACE**.

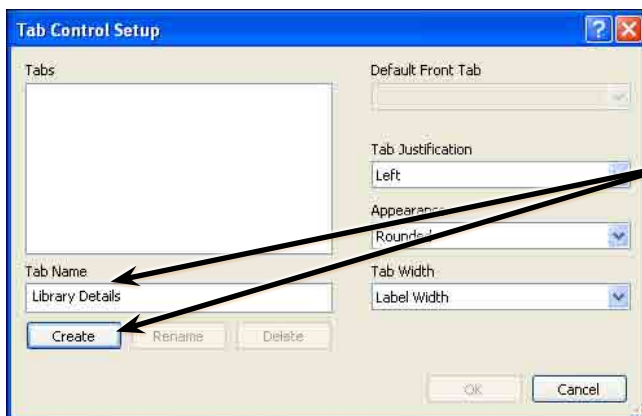
- 1 The screen should be set to the **LIBRARY ENTRY** layout.

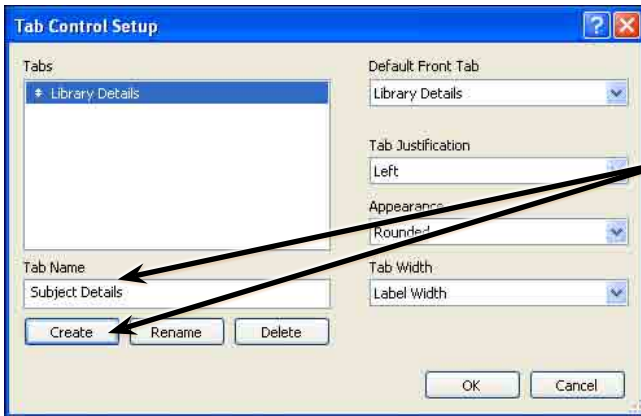




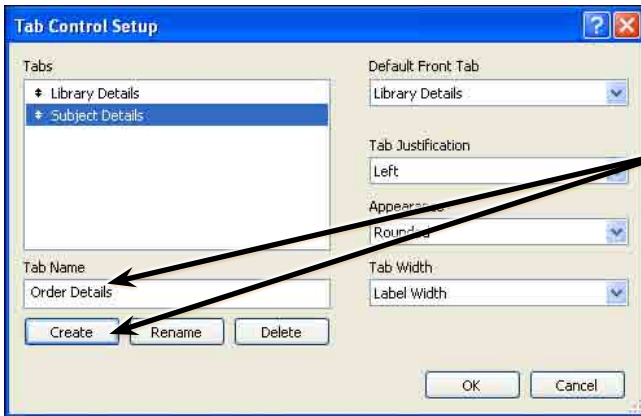
## Defining the Tab Sections

All the sections of the TABBED INTERFACE are entered in the TAB CONTROL SETUP dialogue box.

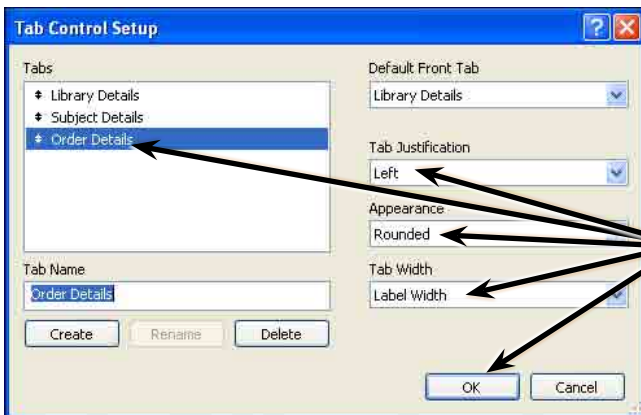




2 In the TAB NAME box enter:  
 Subject Details  
 and click on CREATE to create the second tab.



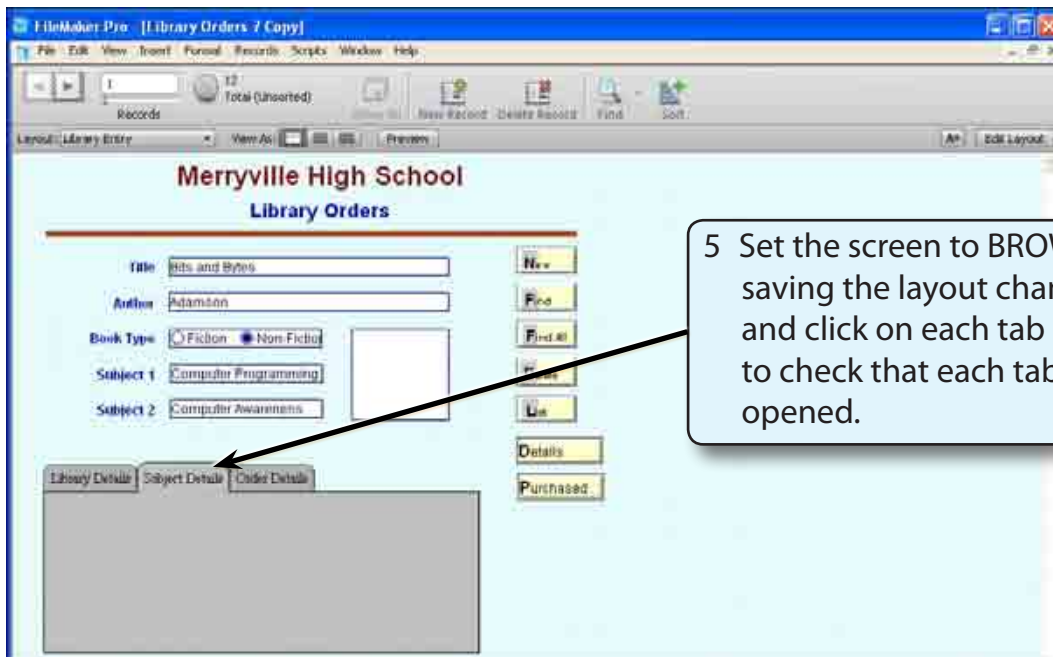
3 In the TAB NAME box enter:  
 Order Details  
 and click on CREATE to create the third tab.



4 The TAB labels are displayed in the TAB frame. Leave TAB JUSTIFICATION as LEFT, APPEARANCE as ROUNDED, the TAB WIDTH as LABEL WIDTH then select OK.

**NOTE:**

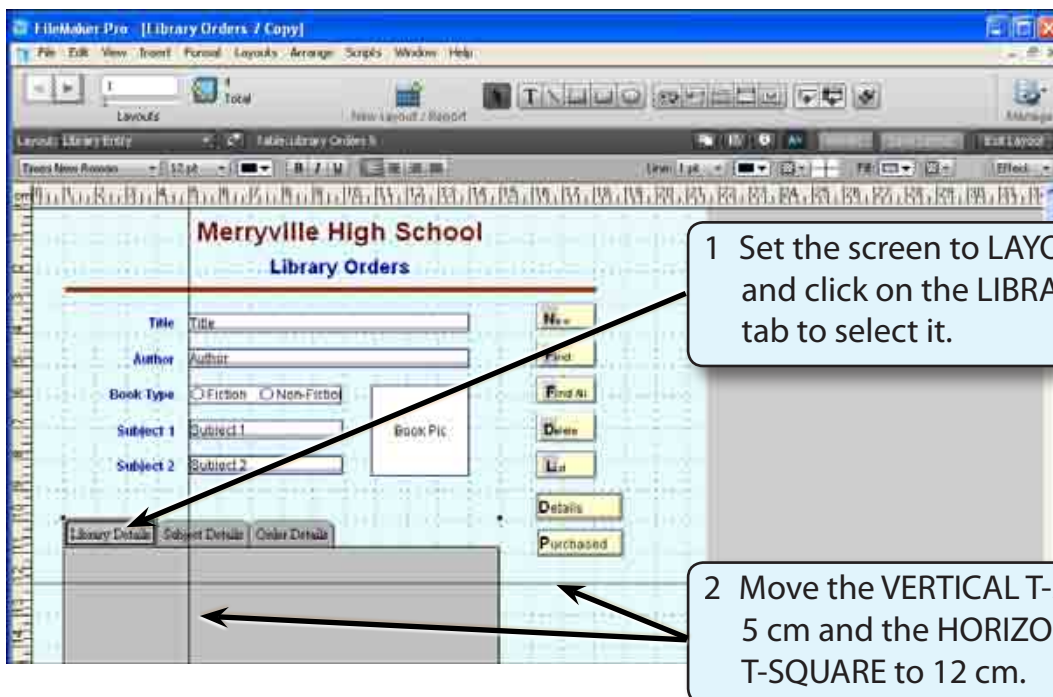
- i The TAB LABELS can be set to be centred, right or full justified.
- ii The appearance of the tabs can be set to rounded or straight.
- iii The arrows next to the tab labels in the TABS frame can be used to change the order of the tabs.



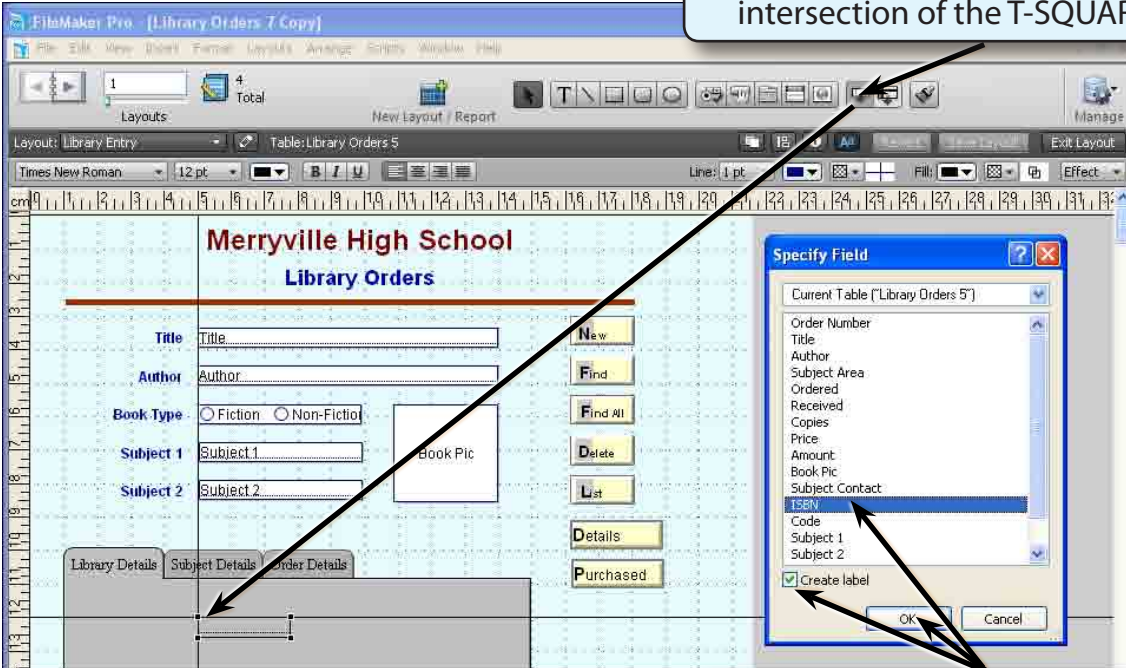
## Completing the Library Details Tab

### A Inserting the Fields

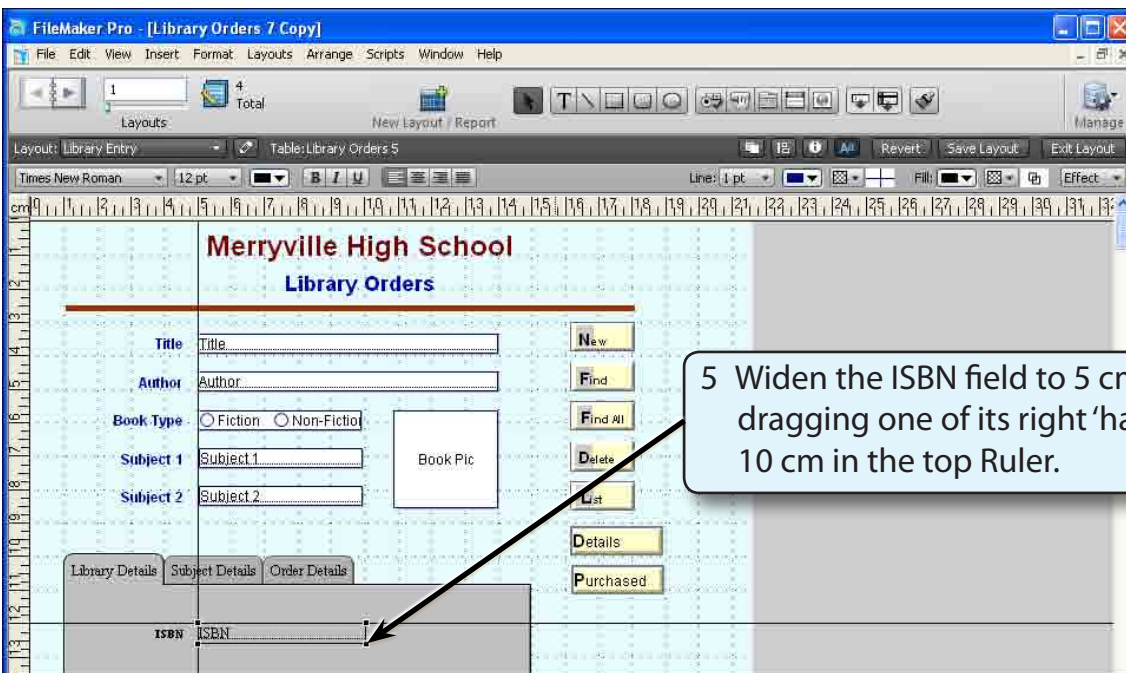
Fields will now be added to Library Details tab region.



3 Drag the FIELD TOOL to the intersection of the T-SQUARES.



4 Select the ISBN field, check that CREATE LABEL is selected and click on OK.



5 Widen the ISBN field to 5 cm by dragging one of its right 'handles' to 10 cm in the top Ruler.