

Calculation Fields

FileMaker Pro allows you to carry out detailed calculations on data. In this chapter you will look at a few different examples.

- 1 Load FileMaker Pro 10, click on OPEN DATABASE and select BROWSE FILES. Or close the current file and select OPEN from the FILE menu.
- 2 Access your FMP10 FILES folder and open:

Library Orders 7 Copy

- 3 Open the LIBRARY ENTRY layout.

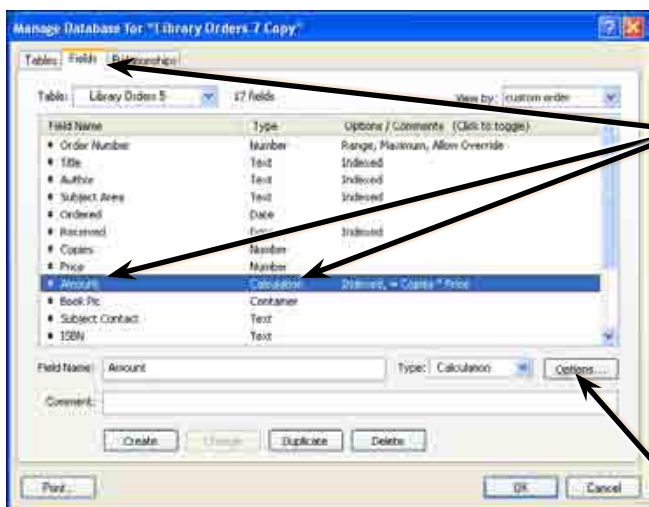
Mathematical Calculations

Mathematical calculations can be carried out on NUMBER fields. The AMOUNT field that is already present in the Library Orders 7 database multiplies the price of the book by the number of copies purchased. Let's see how the calculation was created.

A Opening the Specify Calculation Dialogue Box

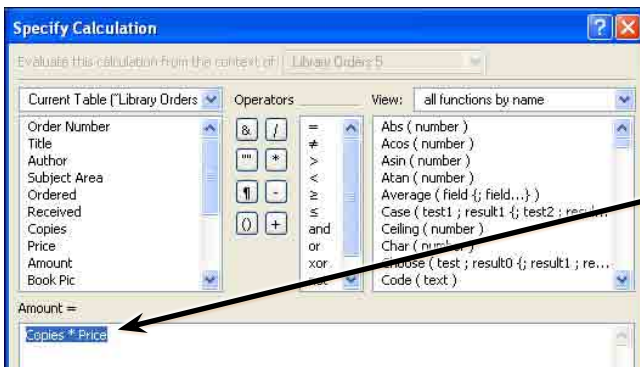
When fields are set to the CALCULATION type the SPECIFY CALCULATION dialogue box is opened. The calculations are entered in that dialogue box.

- 1 Display the FILE menu, highlight MANAGE and select DATABASE.



2 In the FIELDS tab click on the AMOUNT field and notice that its TYPE was set to CALCULATION.

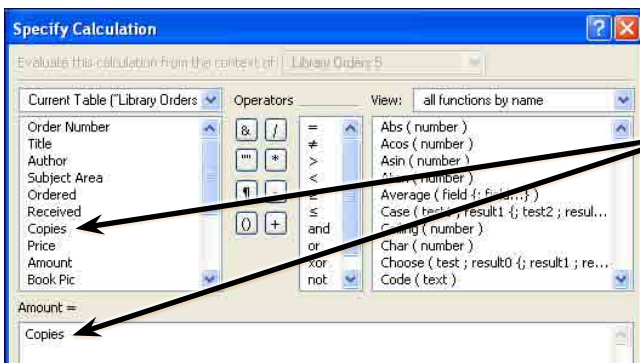
3 Click on the OPTIONS button to open the SPECIFY CALCULATION dialogue box.



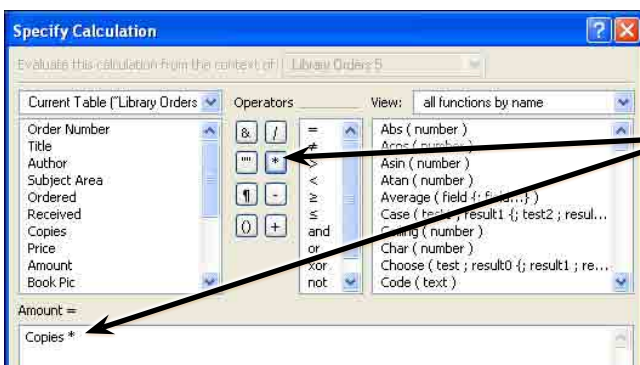
4 Highlight COPIES*PRICE in the AMOUNT= frame and press the BACKSPACE or DELETE key to remove the formula.

B Entering the Calculation Formula

To set the calculation formula you select fields from the top left frame and operators or functions from the top right frames. You can also type in items using the keyboard.

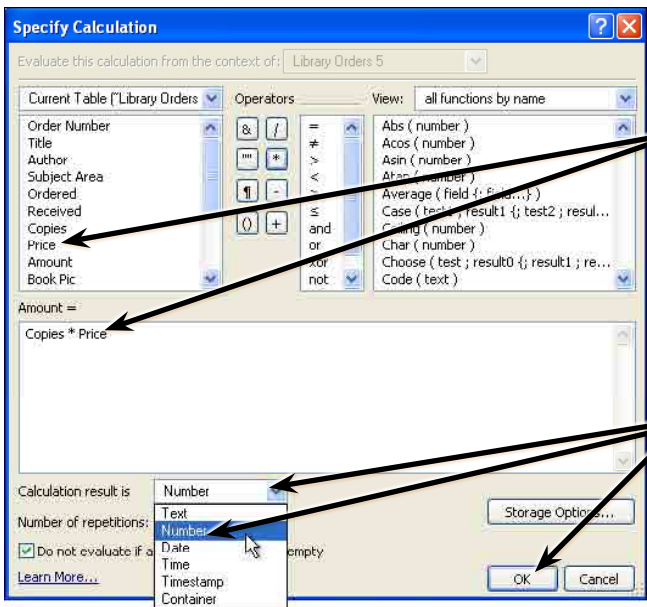


1 Double click on COPIES in the FIELDS frame and it will be added to the AMOUNT= frame.



2 Click on the * button in the OPERATORS section to insert the multiplication symbol.

NOTE: You can enter the * symbol using the keyboard, if you prefer.



3 Double click on the PRICE field to add it to the calculation.

4 Set the CALCULATION RESULT IS box to NUMBER and select OK.

5 Select OK in the MANAGE DATABASE dialogue box to return to the layout.

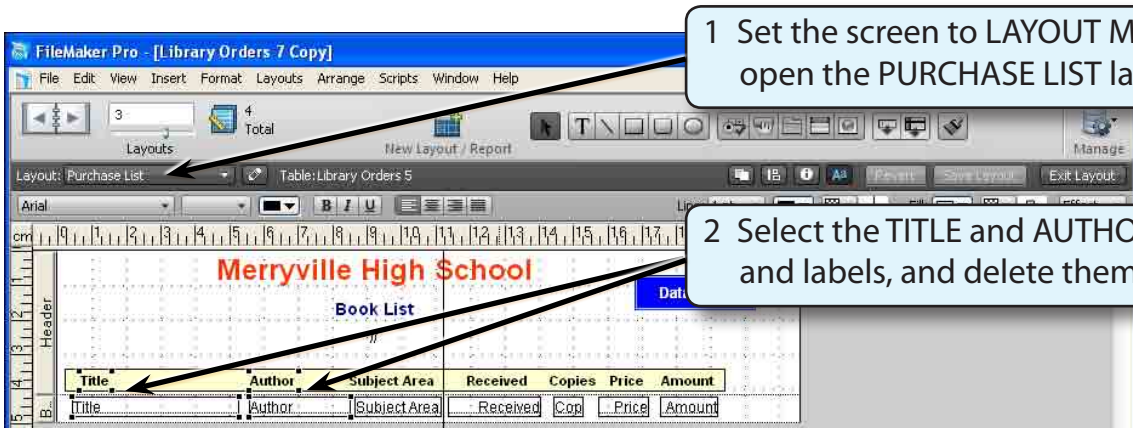
Combining Fields

Calculations can be used to combine the contents of fields. This can save space in reports. An example of where this can be used is combining names together.

Let's combine the book TITLE and AUTHOR fields together and include 'by' between their values.

A Selecting the Layout

The new field will be placed in the PURCHASE LIST layout.

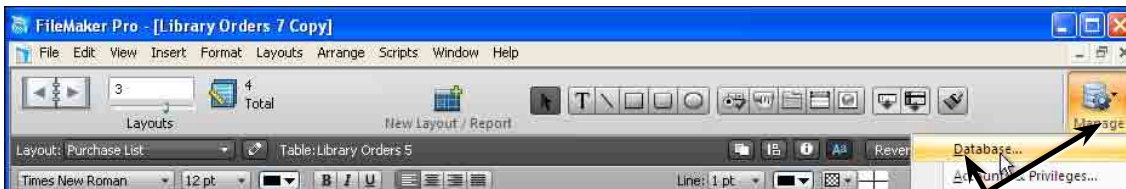


1 Set the screen to LAYOUT MODE and open the PURCHASE LIST layout.

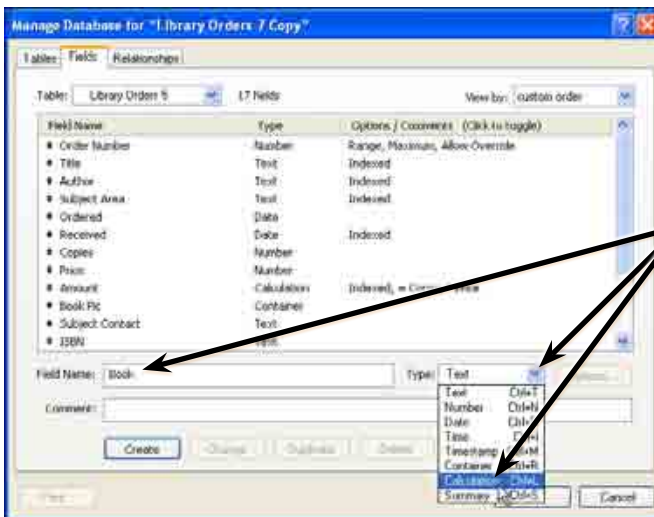
2 Select the TITLE and AUTHOR fields and labels, and delete them.

NOTE: The calculation field will be inserted in the position that the **TITLE** and **AUTHOR** fields and labels were.

B Defining the Calculation Field

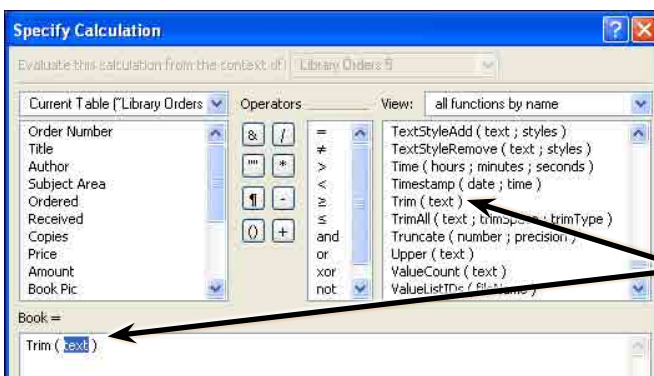


1 Click on the **MANAGE** button in the **STATUS TOOLBAR** and select **DATABASE**.



2 Enter the **FIELD NAME:**
Book
and set the **TYPE** to **CALCULATION**.

3 Click on **CREATE** to open the **SPECIFY CALCULATION** dialogue box.



4 Scroll down the **FUNCTIONS** frame and double click on:
TRIM (TEXT)
to add it to the calculation frame.