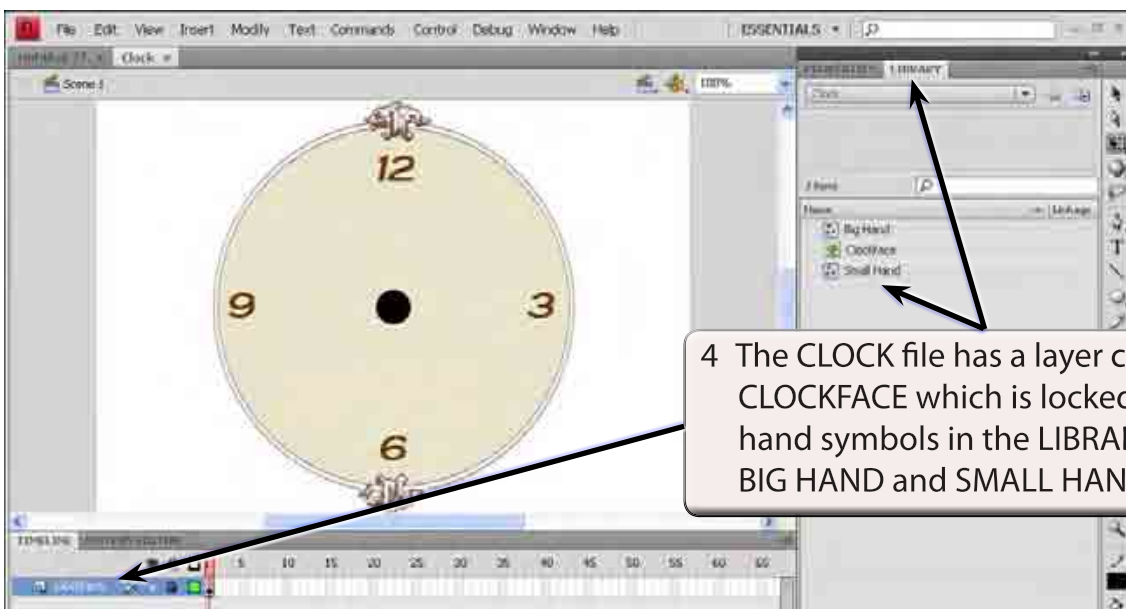


Fixed Point Animations

There are times when you want an object to stay fixed at one end and move around that point. Some examples of this are the hands of a clock, the dials on speedometers or fuel gauges, or levels in a computer game. In this chapter fixed point animations will be demonstrated by animating a clock that has been prepared for you. The hands will be animated to move from 3 o'clock to 4 o'clock.

Loading the Prepared File

- 1 Load Flash and click on the OPEN button or close the current file and click on the OPEN button.
- 2 Access the FLASHcs4 SUPPORT FILES, open the CHAPTER 8 folder and load the file:
Clock
- 3 Open the LIBRARY panel (or press CTRL+L or COMMAND+L to open it).

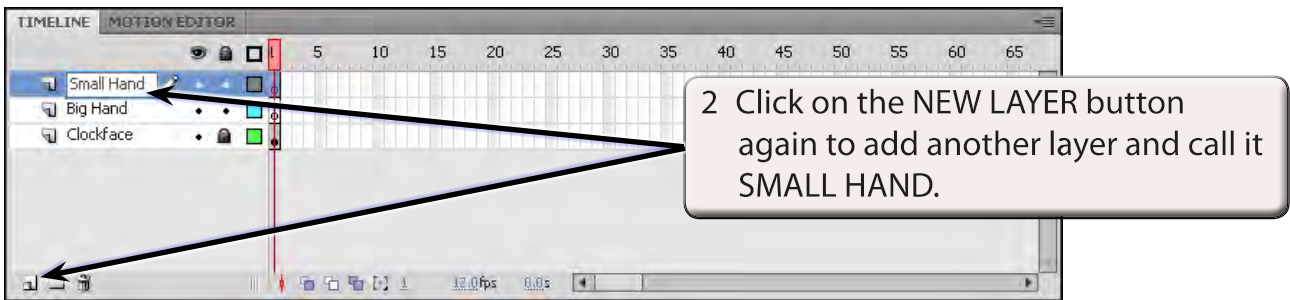
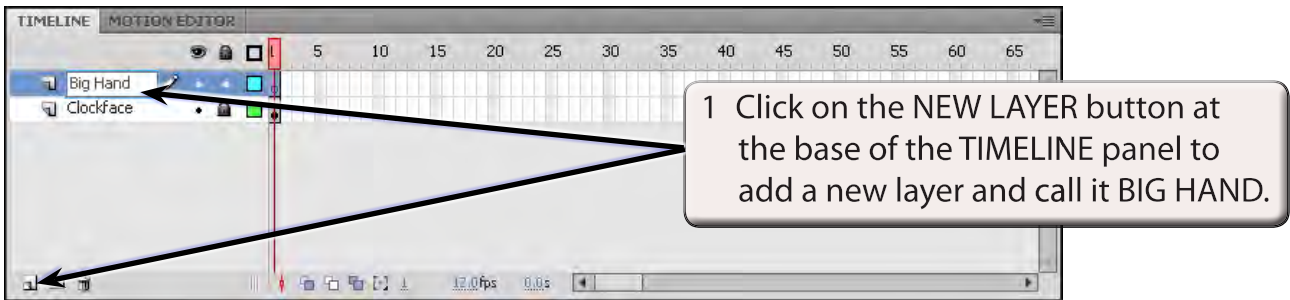


- 5 These resources will be used to complete the animation.
- 6 Use SAVE AS from the FILE menu to save the file in your STORAGE folder under the name:

Clock

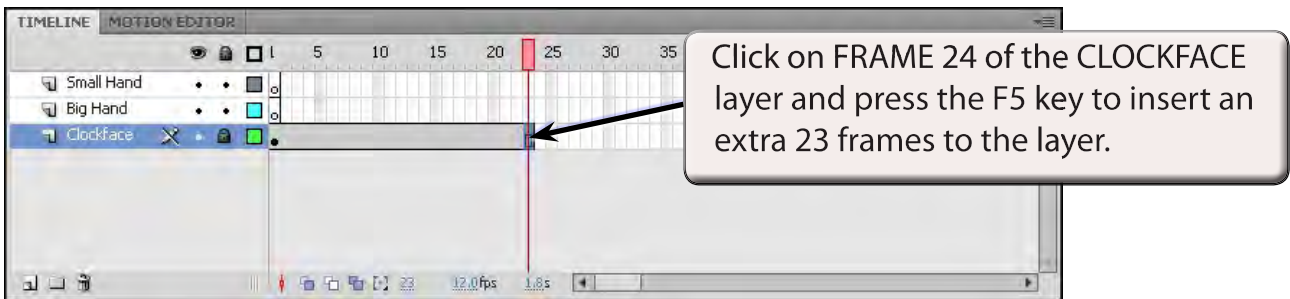
Adding Layers

Two extra layers will be needed, one for the BIG HAND and the other for the SMALL HAND.



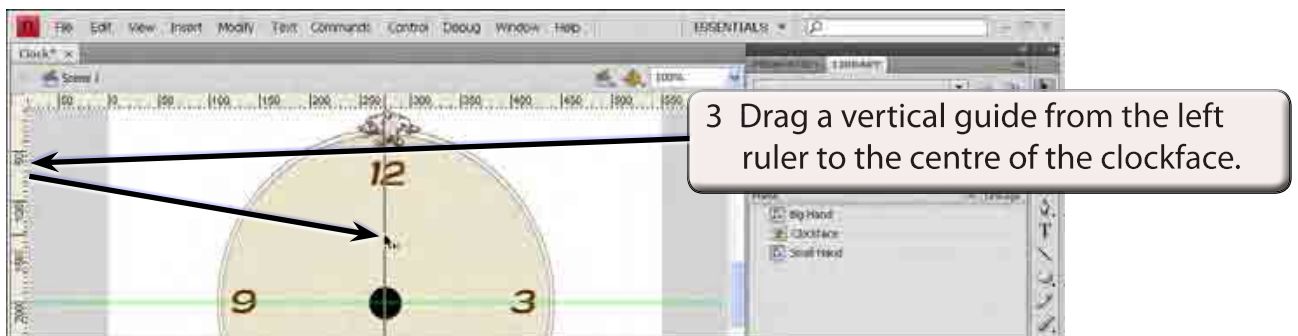
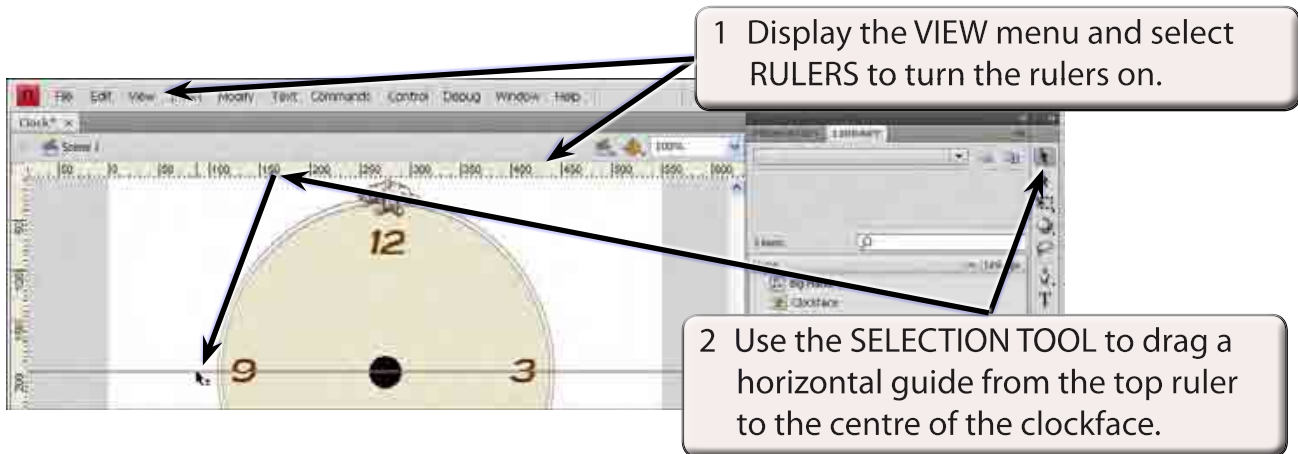
Inserting the Clockface Frames

We will make this a 1 second animation (24 frames). Frames will need to be added to the CLOCKFACE layer so that the clockface stays on the screen throughout the animation.



Adding Guides to the Screen

To assist with the placing of the clock hands on the screen GUIDES will be used to locate the centre of the clockface.

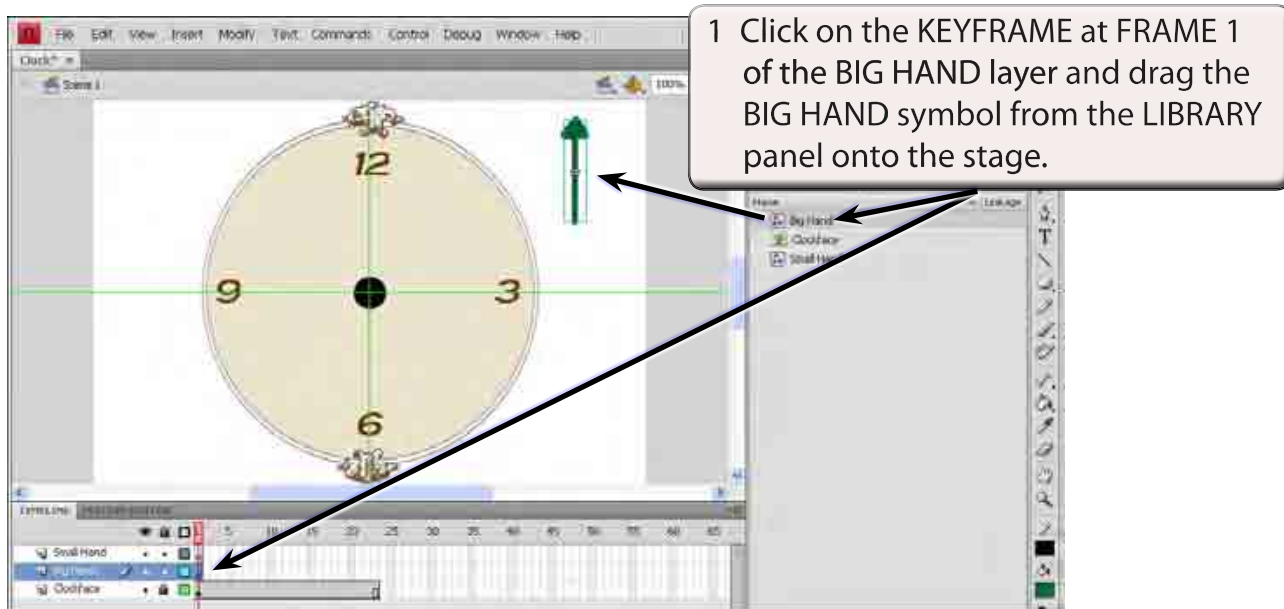


4 Use the VIEW menu to turn the RULERS off.

Animating the Big Hand

The big hand will need to rotate around the clockface once. This can be done using a MOTION TWEEN and a PROPERTY KEYFRAME.

A Adding the Symbol to the Animation



2 Notice that the REGISTRATION MARKER is at the centre of the symbol.

B Editing the Big Hand Symbol

In order to rotate the big hand at its base the REGISTRATION MARKER will need to be moved to the base of the hand. The REGISTRATION MARKER controls where the rotation occurs.

