

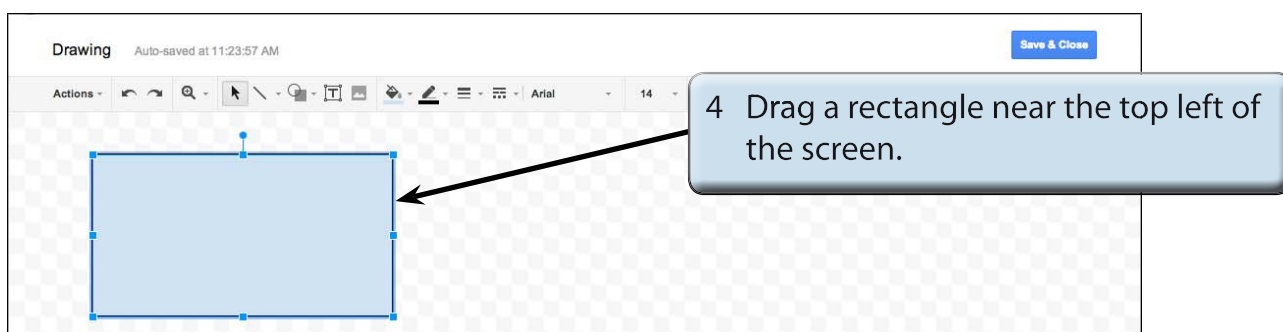
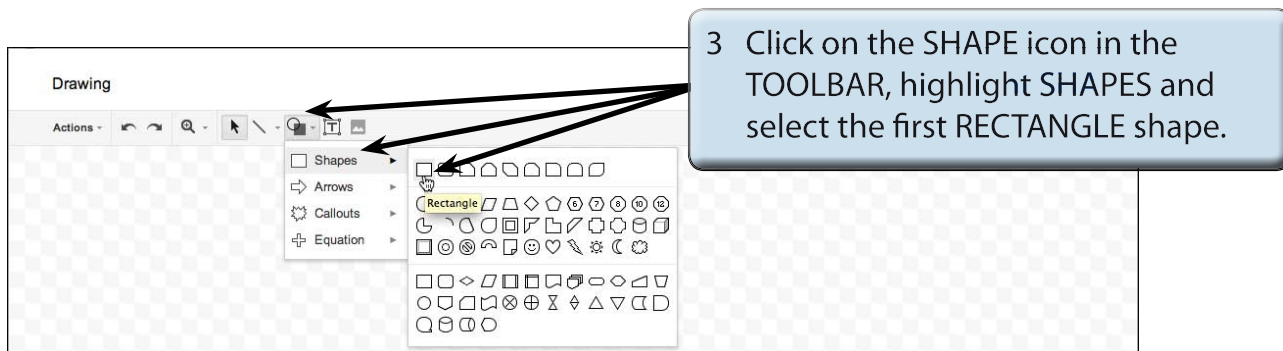
Drawing Tools

Google Docs provides extensive DRAWING TOOLS that allow you to enhance the appearance of your documents. You can use these tools to assist in the creation of detailed publications, newsletters, company logos, etc.

Drawing a Rectangle

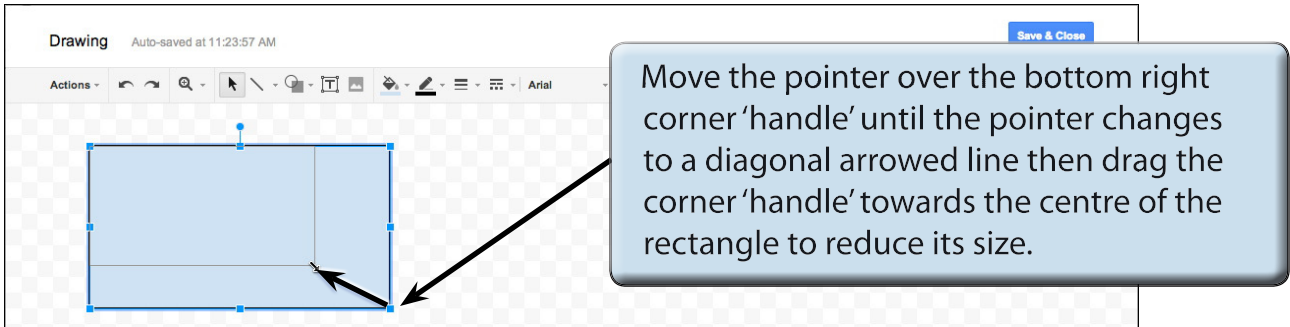
The DRAWING TOOLS are contained in the DRAWING option from the INSERT menu. Let's start by drawing a rectangle.

- 1 Load Google Docs or start a NEW DOCUMENT.
- 2 Display the INSERT menu and select DRAWING to open the DRAWING screen.



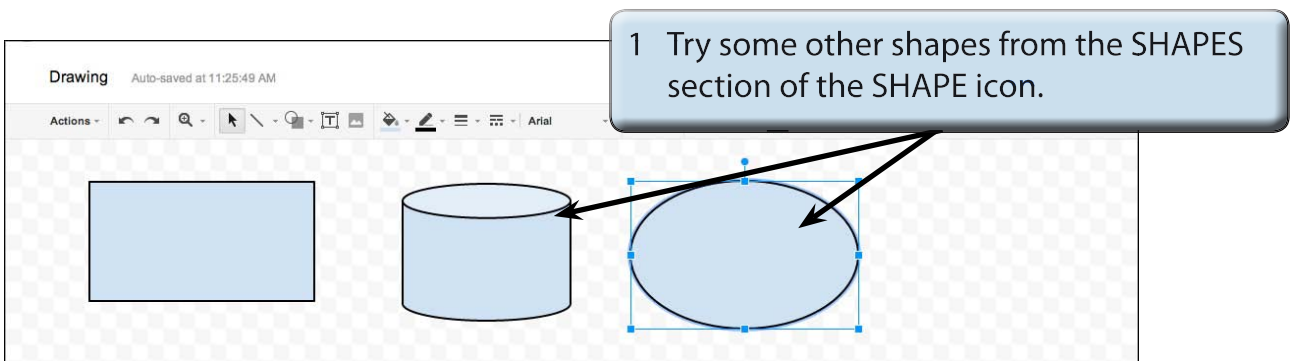
Resizing Shapes

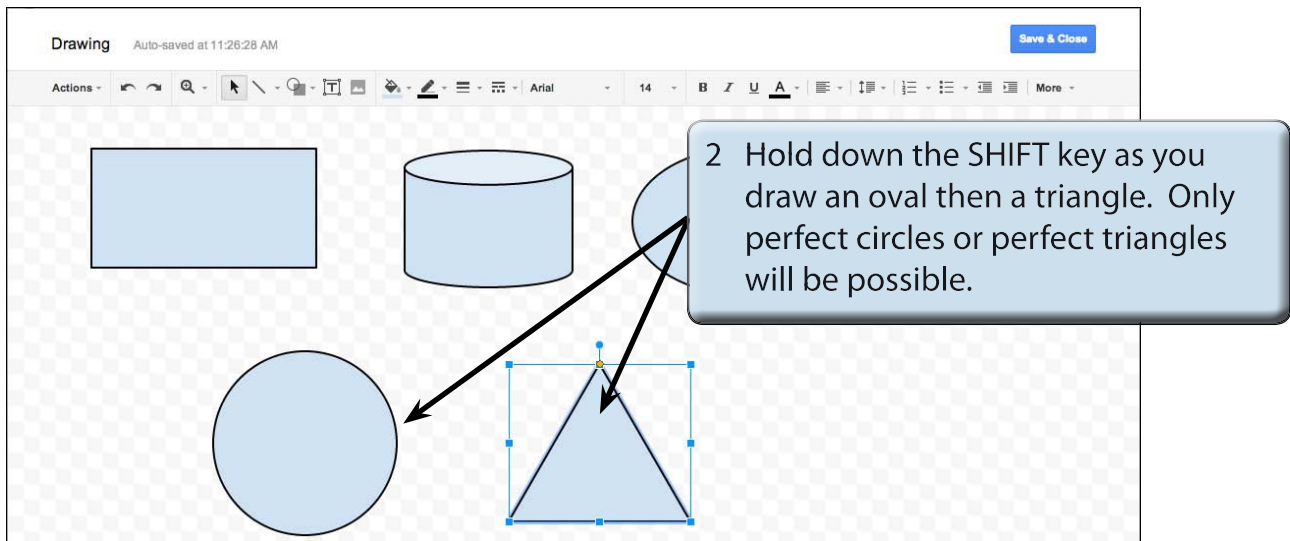
Notice that the rectangle has 'handles' (small shapes) around it. These allow the rectangle to be resized. The 'handles' at the corners allow for diagonal resizing. The 'handles' at the centre of the lines allow for either vertical or horizontal resizing. The circular 'handle' allows you to rotate the shape.



Drawing Other Shapes

You can select other shapes from the SHAPE icon in the TOOLBAR.





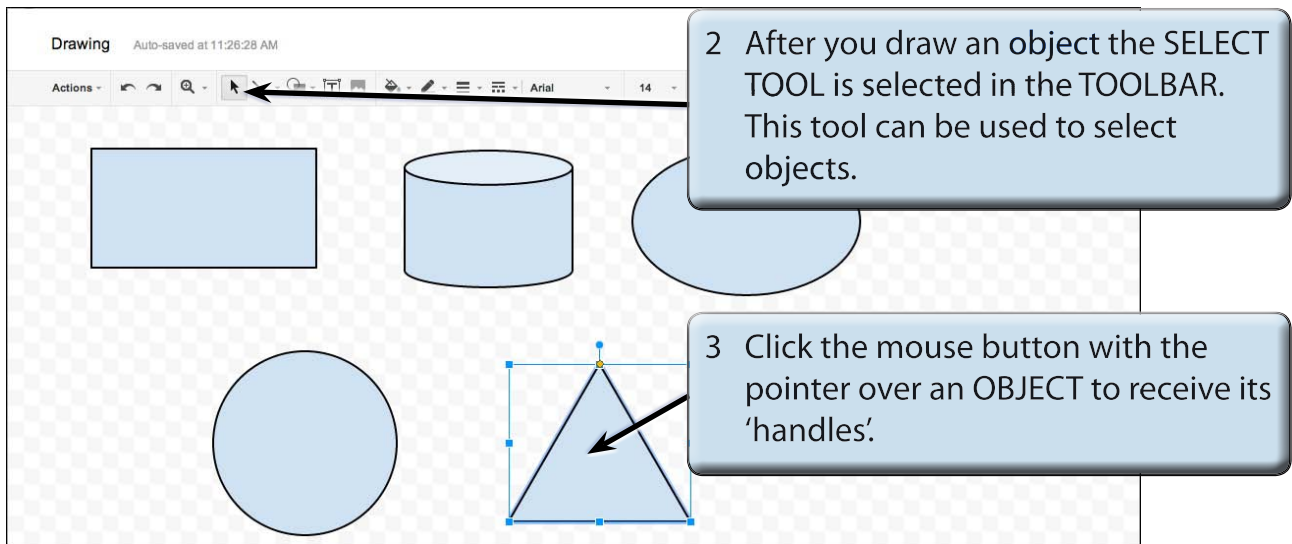
- NOTE:**
- i The **SHIFT** key causes all sides of an object to be the same size.
 - ii All objects created using the **DRAWING TOOLS** can be resized using their 'handles'.

Objects

Each shape drawn in Google Sheets is said to be an OBJECT or separate entity. You select an OBJECT by placing the pointer over the OBJECT and clicking the mouse button. 'Handles' around the OBJECT tell you that it has been selected. The OBJECT can then be deleted, resized, copied or moved. (You've just seen how to resize.)

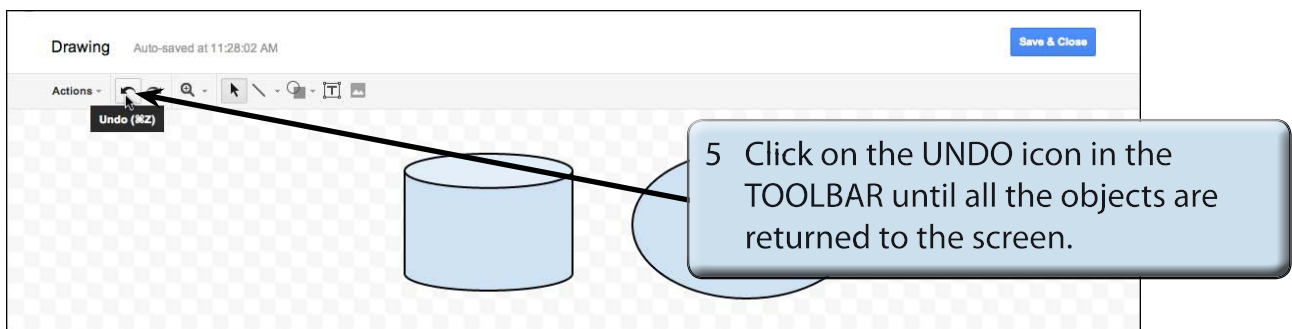
A Deleting Objects

- 1 You should have a number of OBJECTS on the screen at the moment.



NOTE: If an object is filled, you can click on the centre of the object to select it. If the object is not filled, you need to click on the border of the object away from a 'handle'.

4 Press the BACKSPACE or DELETE key and the OBJECT will be removed. Delete some other objects.



NOTE:

- i Pressing CTRL+Z or COMMAND+Z will also undo previous steps.
- ii The CUT option from the ACTIONS icon in the TOOLBAR can also be used to delete OBJECTS.