

Placing Text in Columns

When entering a page of text it is sometimes advantageous to place that text in columns. This can make the passage easier to read and make more efficient use of the space available on a page. Microsoft Word allows you to split the page into up to 11 columns, each having its own margins, indents, justifications and widths. Normally, however, 2 or 3 columns are used.

Loading a Prepared Article

An article about Japan has been entered for you. It will need to be converted into columns.

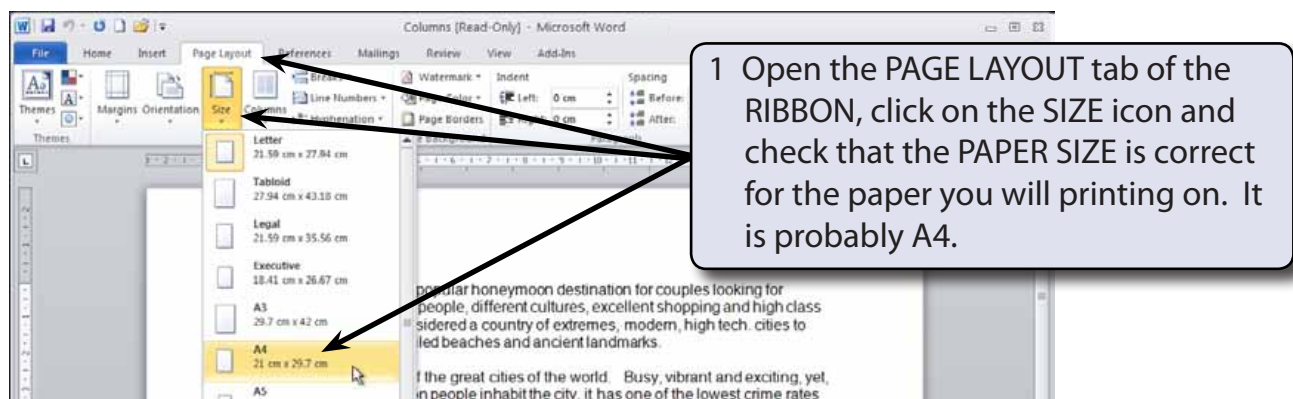
- 1 Load Microsoft Word or close the current file then click on the FILE tab and select OPEN.
- 2 Access the WORD 2010 SUPPORT FILES.
- 3 Double click on the CHAPTER 9 folder to open that folder, then double click on the COLUMNS file to load the file and select YES to the READ ONLY message.

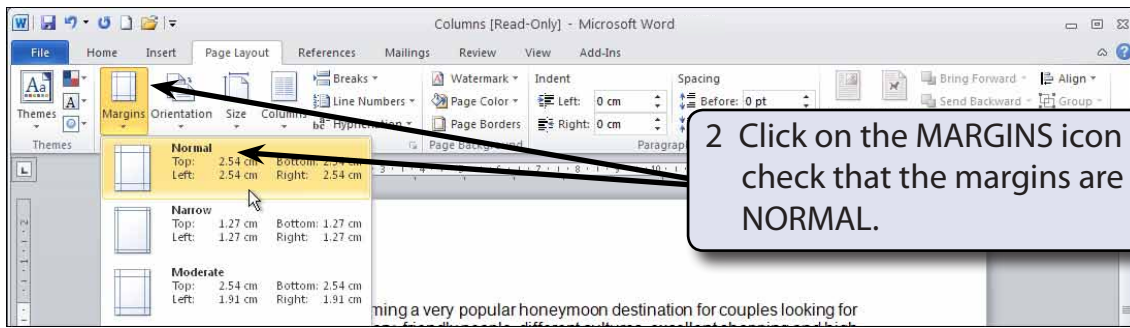
Setting Text into Two Columns

As it is at the moment, the text is a little boring to read. Placing it in two columns can make it much more interesting.

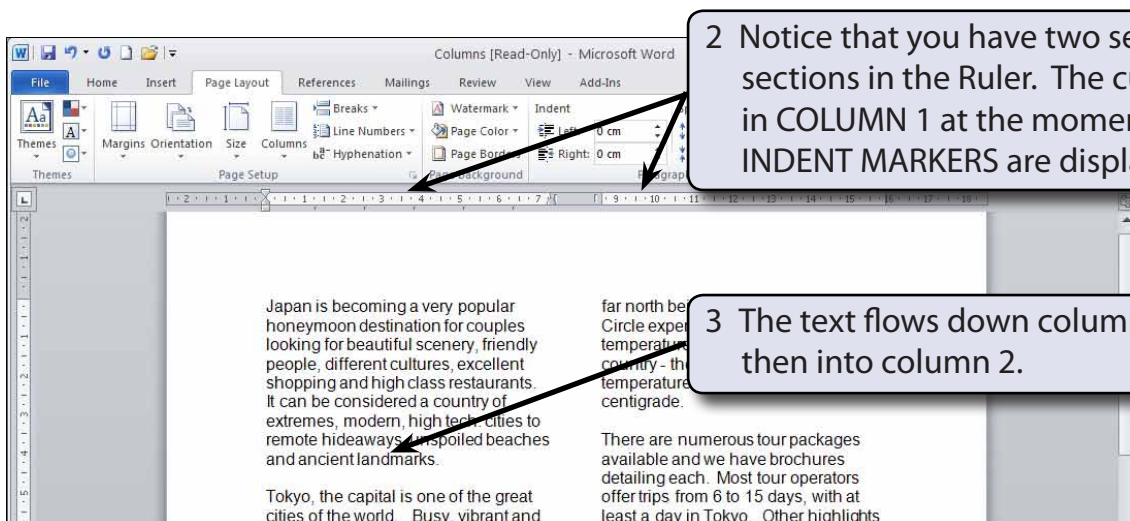
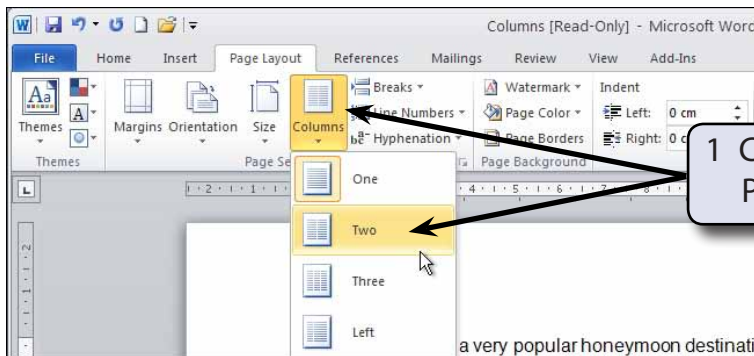
A Preliminary Settings

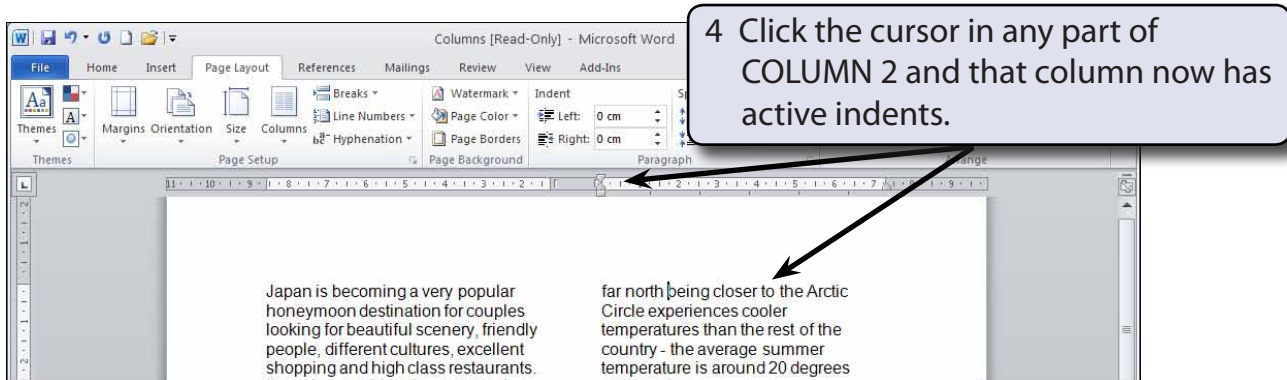
Before placing text in columns you should check that the PAGE SETUP is correct for your system.





B Setting the Columns





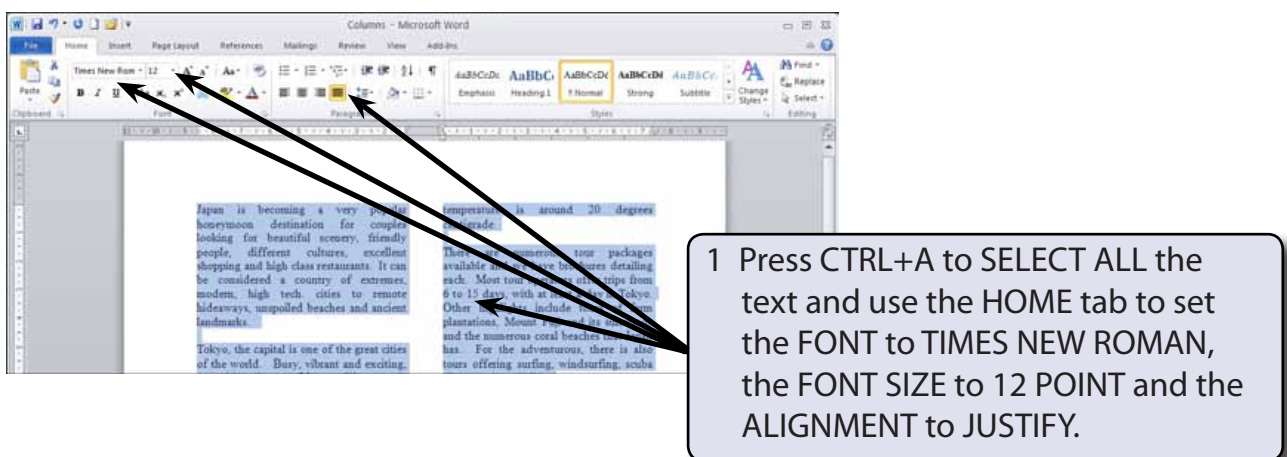
- 5 Save the file in your WORD DOCUMENTS folder under the file name:

Columns

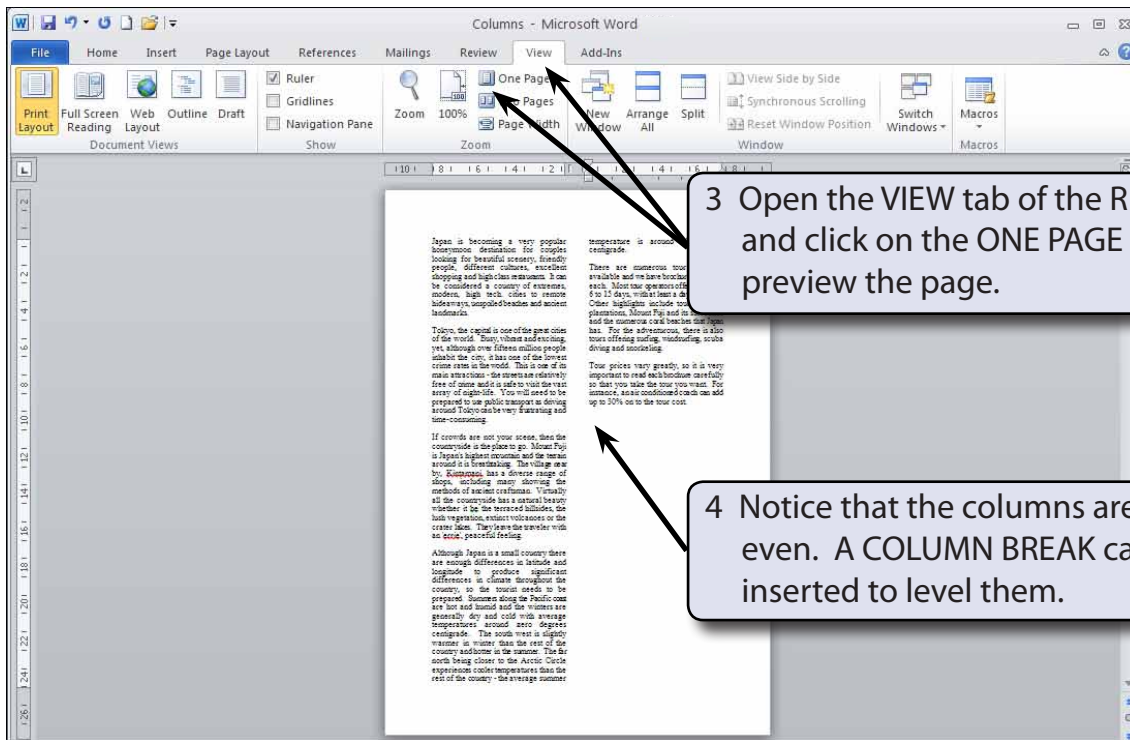
Remember to turn off READ ONLY RECOMMENDED.

C Justifying the Text

Text in columns usually looks better justified. That way all sides of the columns are straight.



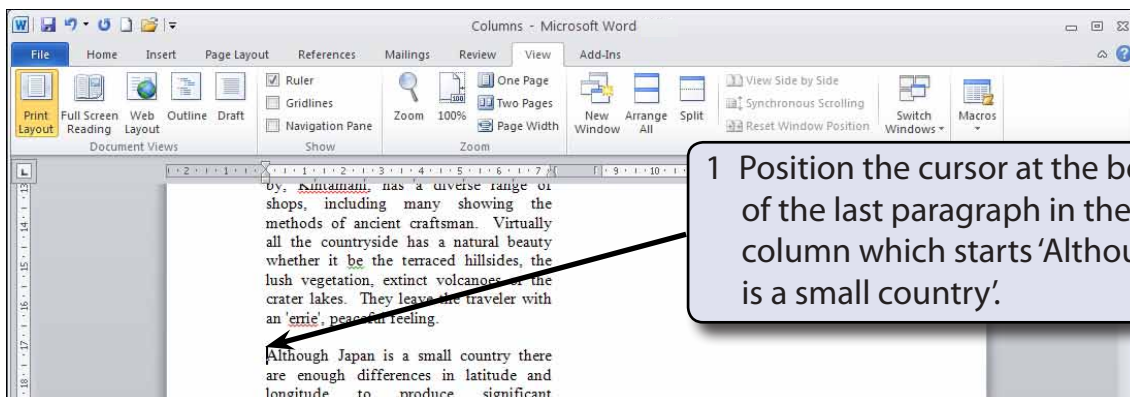
- 2 Remove the highlight by clicking the mouse button with the I-BEAM over the text.

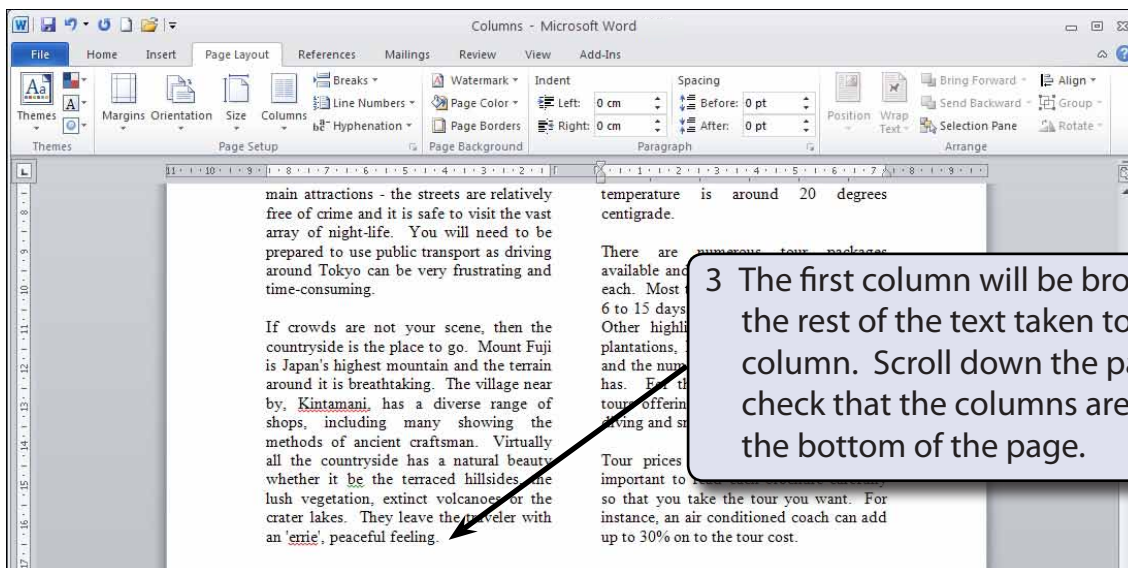
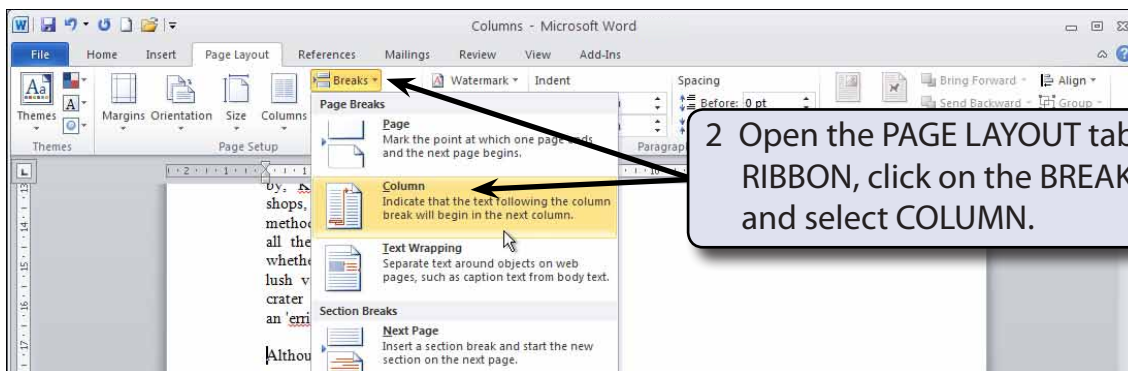


5 Return the ZOOM to 100%.

D Inserting a Column Break

A COLUMN BREAK takes the text to the top of the next column. It is a similar to inserting a PAGE BREAK.





- 4 Save your file by pressing CTRL+S or by clicking on the SAVE button in the QUICK ACCESS TOOLBAR.

NOTE: CTRL+SHIFT+<enter> is a keyboard shortcut for inserting a column break.