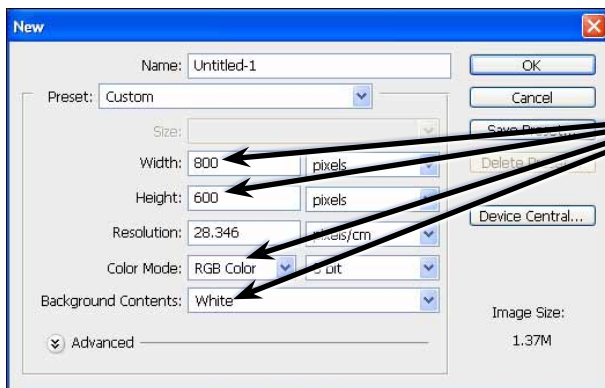


# Adding Text to Designs

Text can be added to photographs and manipulated. There are text effects available to curve letters, display them vertically, set text to follow a path and applying similar effects to those you added to shapes in the last chapter.

## Starting a New Document

- 1 Load Photoshop or close the current file and select NEW from the FILE menu.

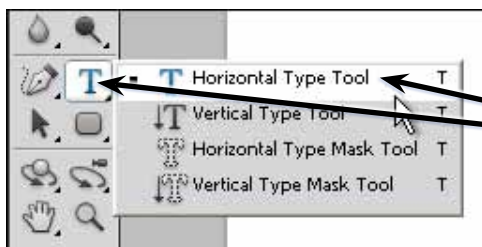


2 Set the WIDTH to 800 pixels, the HEIGHT to 600 pixels, the COLOUR MODE to RGB COLOUR and the BACKGROUND CONTENTS to WHITE.

- 3 Select OK to start the page.

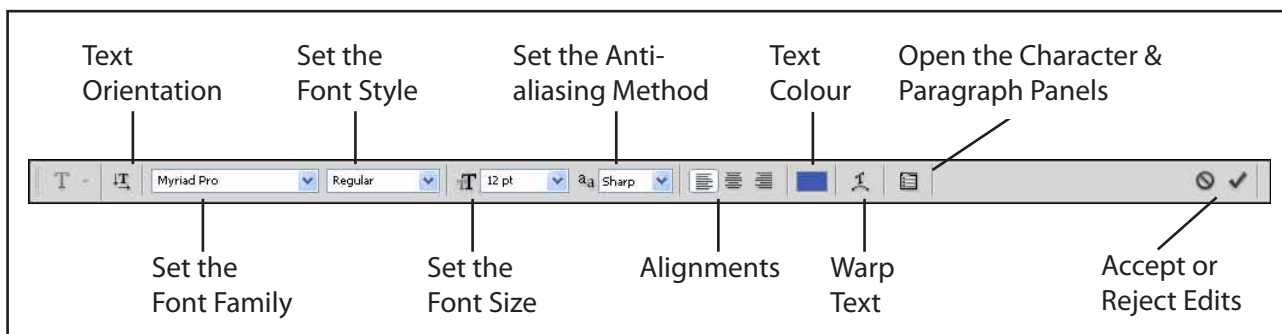
## Entering Text

The TEXT TOOLS are housed within the TYPE TOOL in the TOOLS panel.

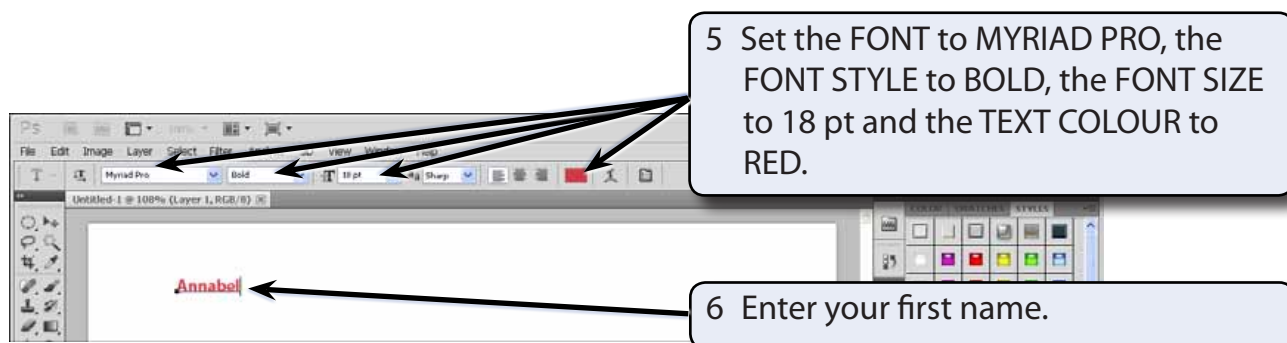


1 Click and hold down the mouse button on the TYPE TOOL and select the HORIZONTAL TYPE TOOL.

- 2 The OPTIONS BAR should display the text options which are labelled in the diagram at the top of the next page.



- 3 Set the VIEW to FIT ON SCREEN by pressing CTRL+0 on the Windows system or COMMAND+0 on the Macintosh system.
- 4 Click the cursor (which is now an I-Beam) near the top left of the canvas.

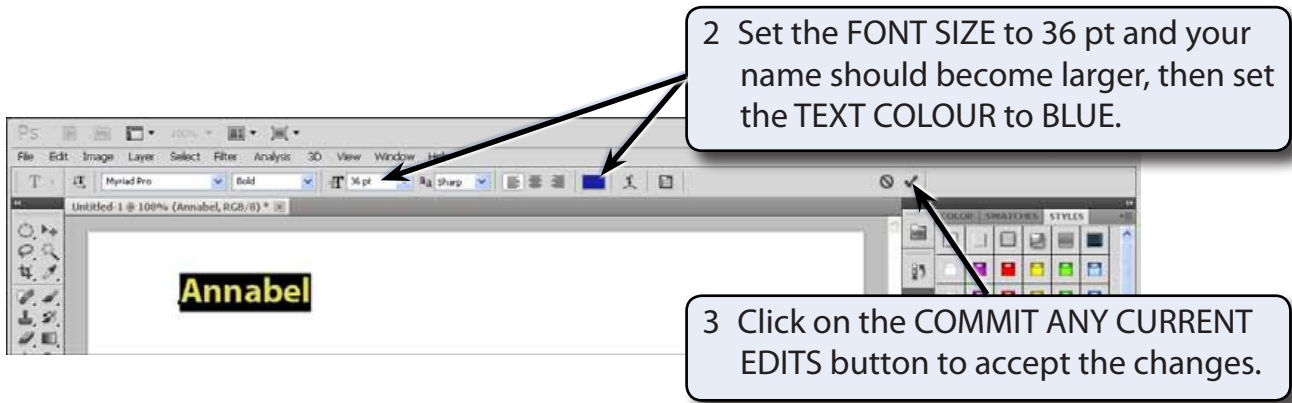


**NOTE:** A text layer is created in the LAYERS panel when you click the I-Beam on the canvas.

## Altering Text

You can alter text once it has been entered.

- 1 Highlight your name by dragging the I-Beam across the letters or by double clicking on the letters.

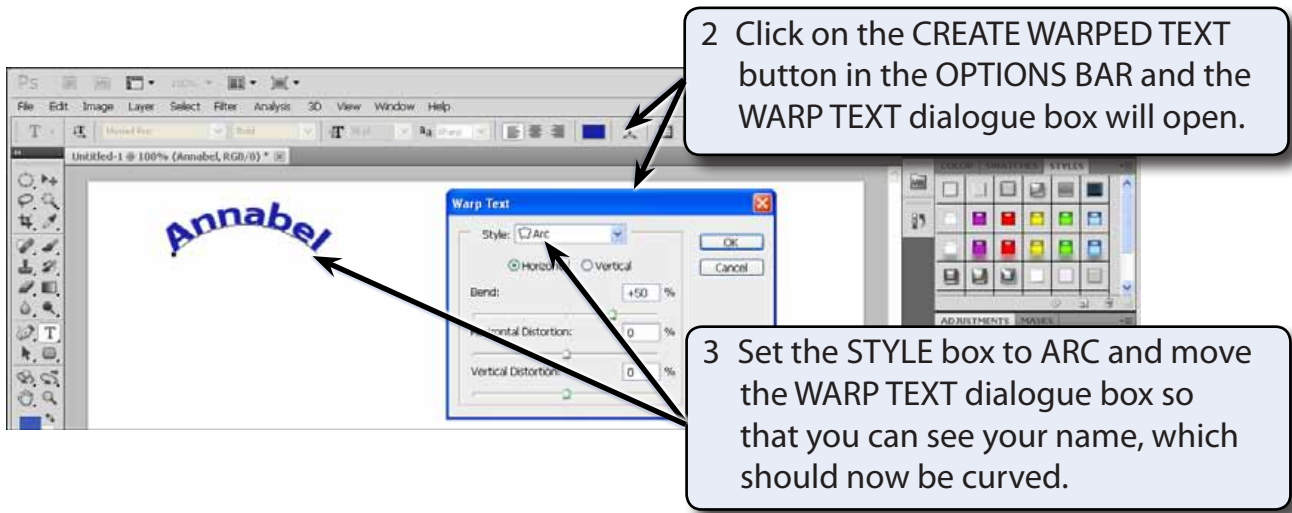


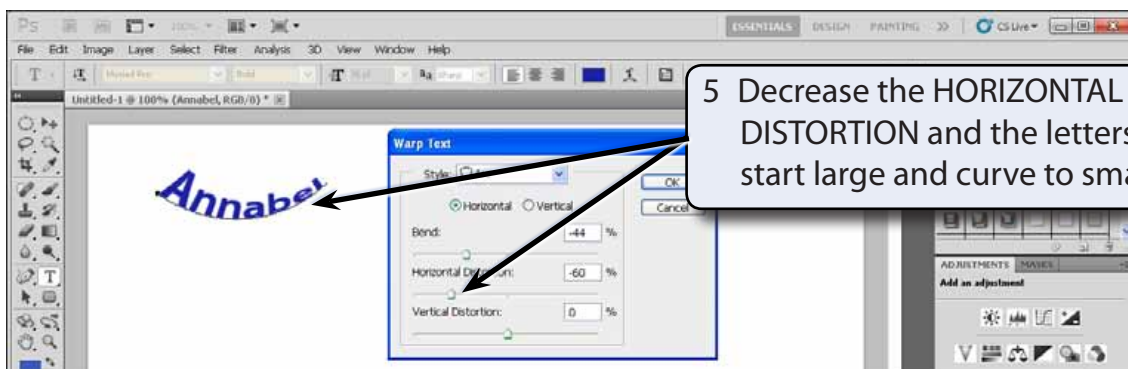
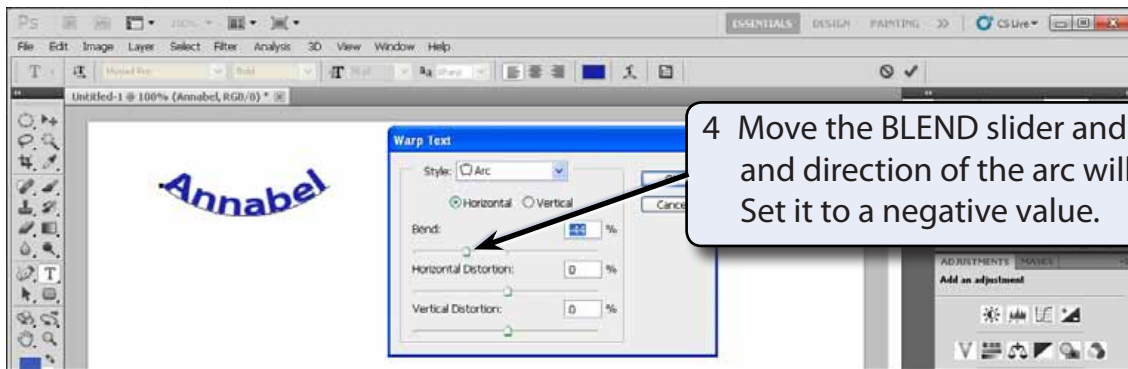
## Warping Text

There are a number of special curved effects that can be applied to the text. These are found in the WARP TEXT button in the OPTIONS BAR.

### A Single Arced Text

- 1 Click the I-Beam anywhere in your name.





**NOTE:** The reverse occurs if you increase the HORIZONTAL DISTORTION.

