

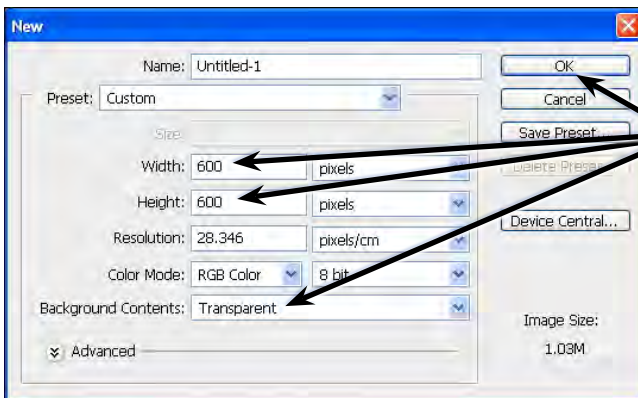
Creating Masks

Layers are one of the most fundamental aspects of Photoshop. They allow you to break a drawing up into small selections which makes detailed drawings much easier to manage. In this Chapter you will use layers to create masks. Masks are covers that you place over things. In Photoshop you can show parts of photos or images through a mask placed over the image. This technique is called creating CLIPPING GROUP LAYERS where one layer clips the contents of another.

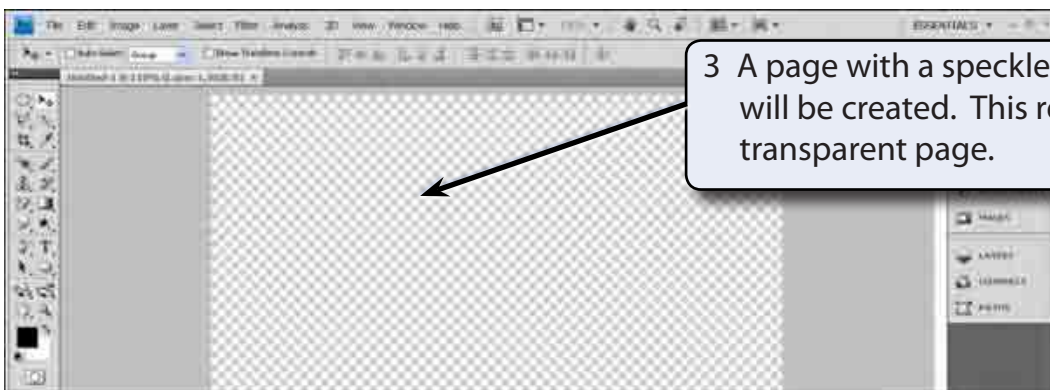
Creating a Transparent Layer

Layers can be set to have different filled backgrounds. One with a white background, one with a coloured background and another with a transparent (or clear) background. In this case a transparent layer will be used.

- 1 Load Photoshop or close the current files and select NEW from the FILE menu.



- 2 Set the WIDTH and HEIGHT to 600 pixels, the BACKGROUND CONTENTS to TRANSPARENT and select OK.

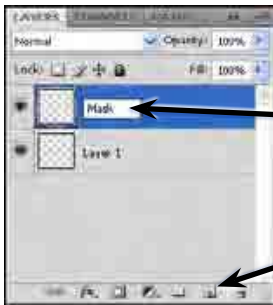


- 3 A page with a speckled background will be created. This represents a transparent page.

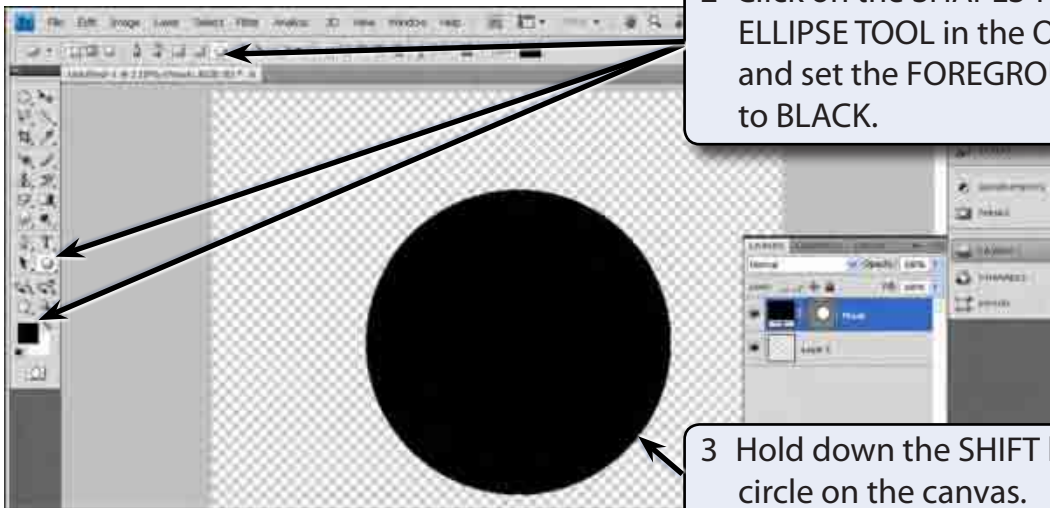
- 4 Press CTRL+0 or COMMAND+0 to set the view to FIT ON SCREEN.

Drawing the Mask Shape

The ELLIPSE TOOL will be used to draw a circle on the canvas. This will be filled and become a window (or mask) to view other pictures.



1 Expand the LAYERS panel, click on the CREATE NEW LAYER icon and call the new layer:
Mask



2 Click on the SHAPES TOOL, select the ELLIPSE TOOL in the OPTIONS BAR and set the FOREGROUND COLOUR to BLACK.

3 Hold down the SHIFT key and drag a circle on the canvas.

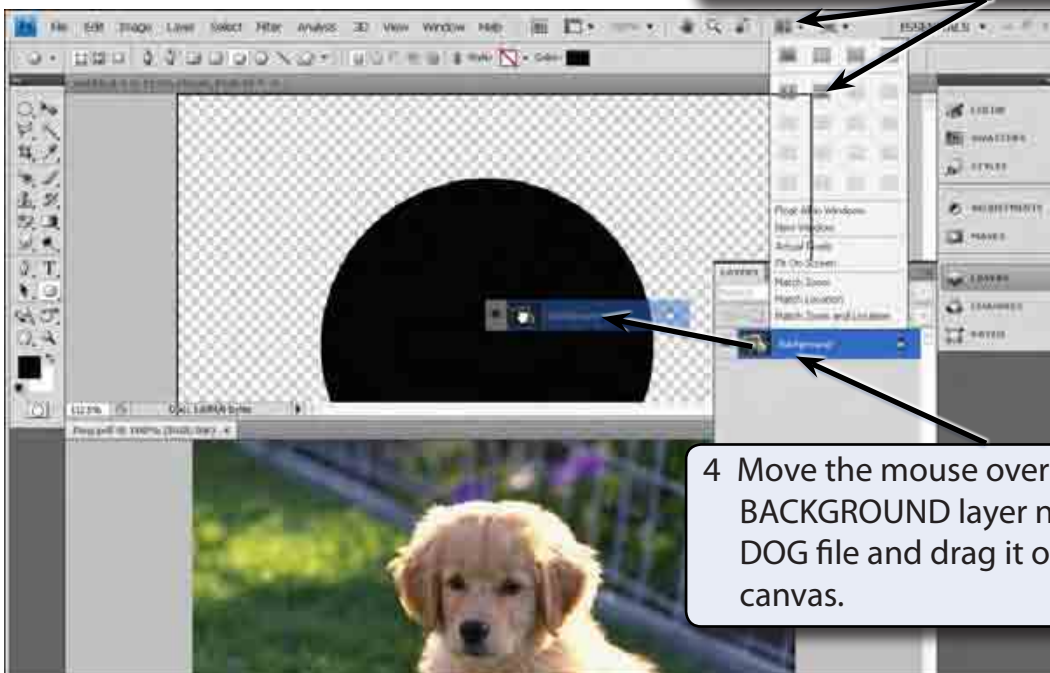
NOTE: If the circle has a style applied to it, click on the **STYLE** box in the **OPTIONS** panel then click on its **PANEL MENU** icon and select **NO STYLE**.

Adding a Background File

We will use a picture of a dog to act as the background image.

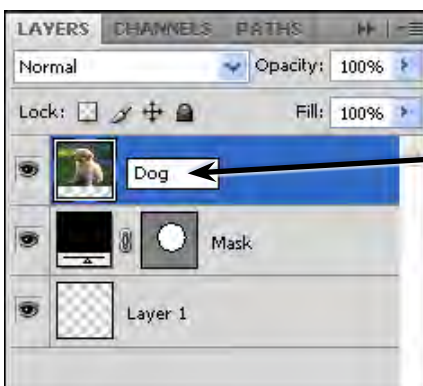
- 1 Display the FILE menu and select OPEN.
- 2 Access the PSCs4 SUPPORT FILES, open the CHAPTER 9 folder and open the DOG file.

3 In the APPLICATION BAR, click on the VIEW DOCUMENTS button and select 2 UP to see both files.



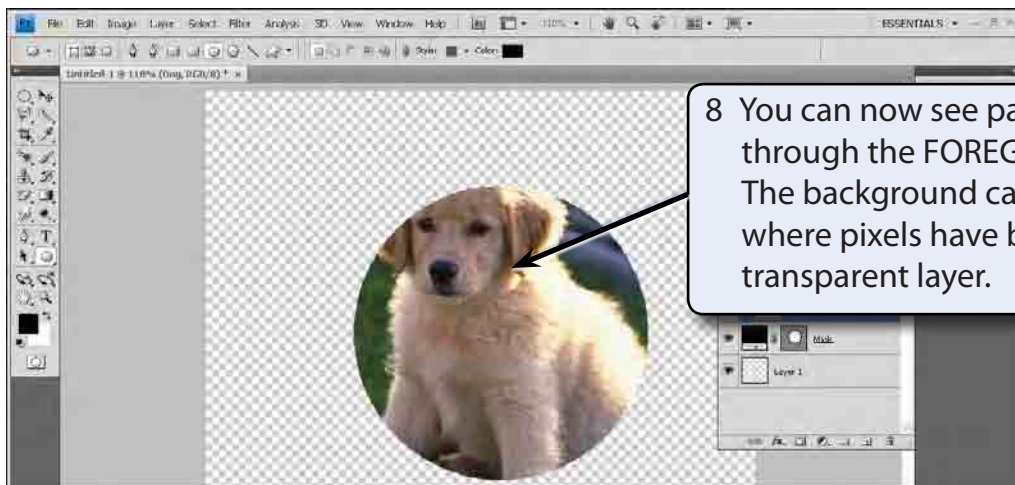
4 Move the mouse over the BACKGROUND layer name in the DOG file and drag it onto the circle's canvas.

- 5 Close the DOG file by clicking on its CLOSE BOX or by selecting CLOSE from the FILE menu.



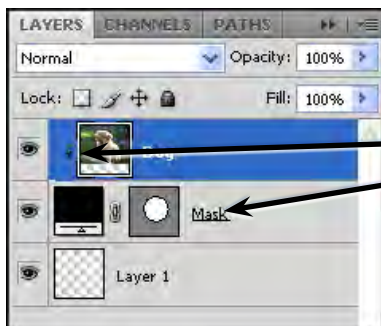
6 A layer should be added above the MASK layer. Name the new layer:
Dog
and press <enter> or <return>.

- 7 With the DOG layer selected in the LAYERS panel, display the LAYER menu and select CREATE CLIPPING MASK to combine the DOG layer with the MASK layer.

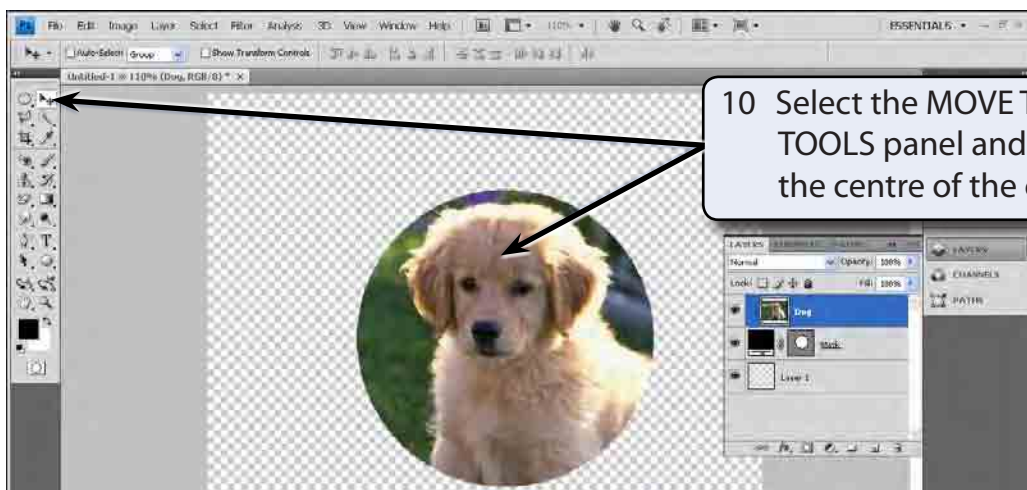


8 You can now see part of the dog through the FOREGROUND layer. The background can only be seen where pixels have been drawn in the transparent layer.

NOTE: You can also hold down the ALT or OPTION key and click on the border between the DOG and MASK layers to create the mask.



9 An arrow is added to the DOG layer and it is indented to indicate that it is combined with the MASK layer. The MASK layer is underlined to indicate that it is the host layer.



10 Select the MOVE TOOL from the TOOLS panel and drag the dog to the centre of the circle..