

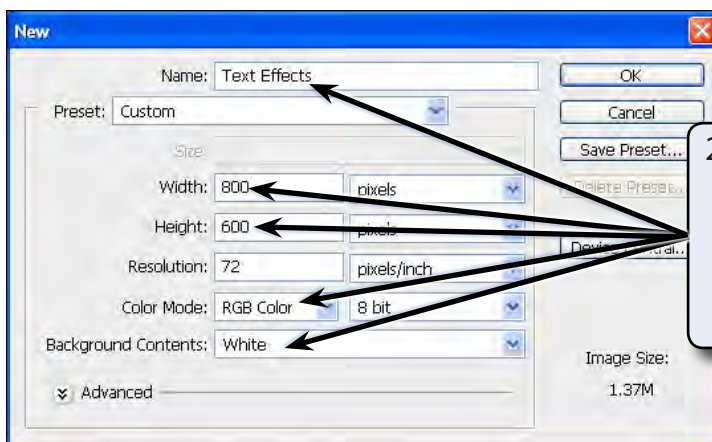
Creative Text Effects

You have already created some text effects in the graffiti exercises. Photoshop provides numerous other effects that can be applied to text to create logos, signs, displays, etc. In this exercise some three dimensional or gel effects will be applied to some text, a reflection added followed by some lighting effects to create the following slogan:



Starting a New Document

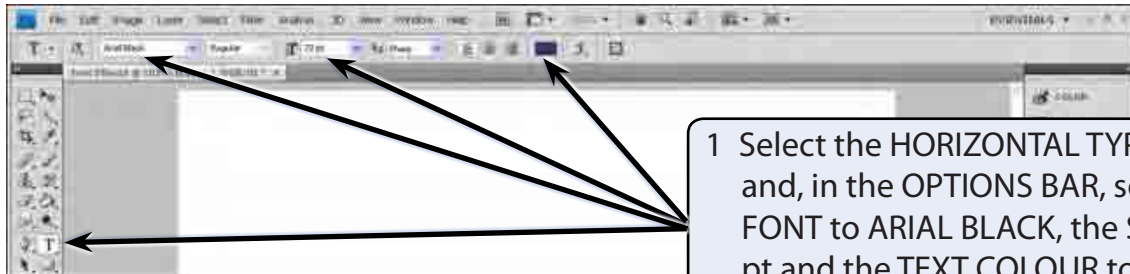
- 1 Load Photoshop or close the current files, then display the FILE menu and select NEW.



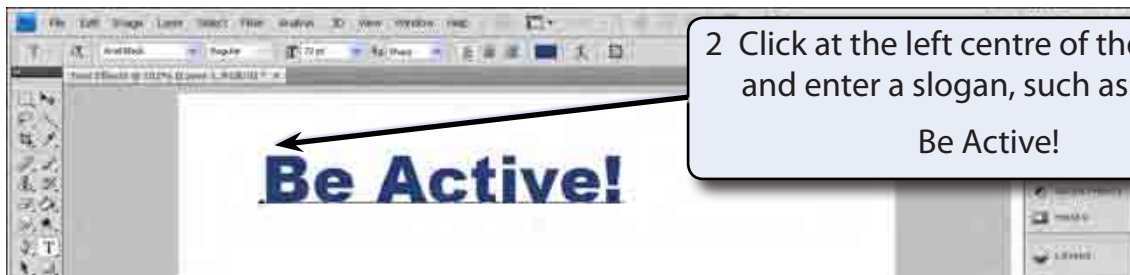
- 2 Call the document TEXT EFFECTS, set the WIDTH to 800 pixels, the HEIGHT to 600 pixels, the COLOUR MODE to RGB COLOUR, 8 BIT and the BACKGROUND COLOUR to WHITE.

- 3 Select OK to start the document.

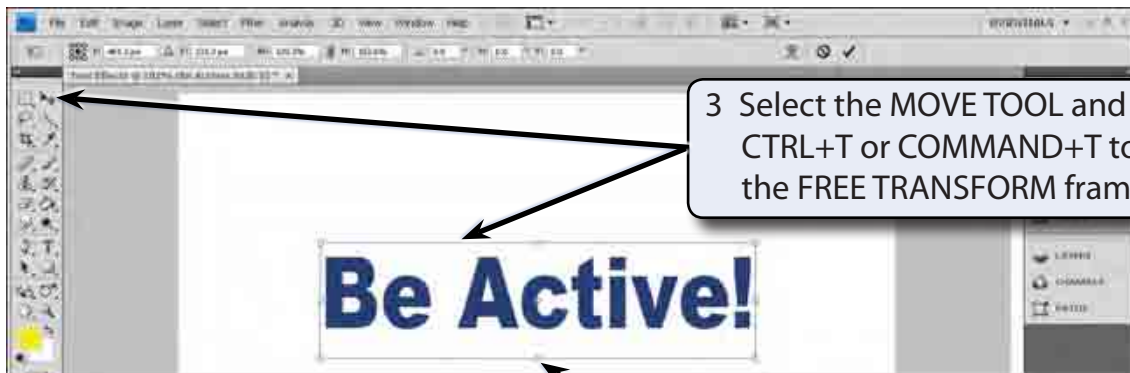
Entering the Text



1 Select the HORIZONTAL TYPE TOOL and, in the OPTIONS BAR, set the FONT to ARIAL BLACK, the SIZE to 72 pt and the TEXT COLOUR to DARK BLUE.



2 Click at the left centre of the canvas and enter a slogan, such as:
Be Active!



3 Select the MOVE TOOL and press CTRL+T or COMMAND+T to display the FREE TRANSFORM frame.

4 Resize the text so that the letters are thicker and move the text to the centre of the canvas.

5 Press <enter> or <return> to accept the transformation.

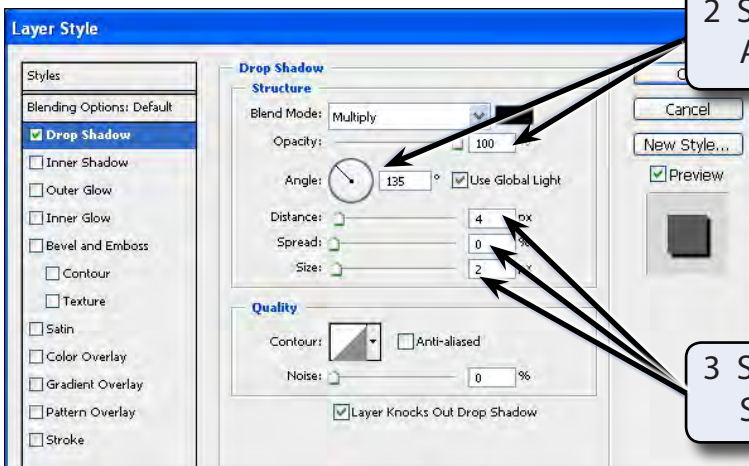
Adding a Three Dimensional Effect

The text will be given a three dimensional or gel effect.

A Adding a Drop Shadow



1 Click on the ADD A LAYER STYLE icon at the base of the LAYERS panel and select DROP SHADOW.

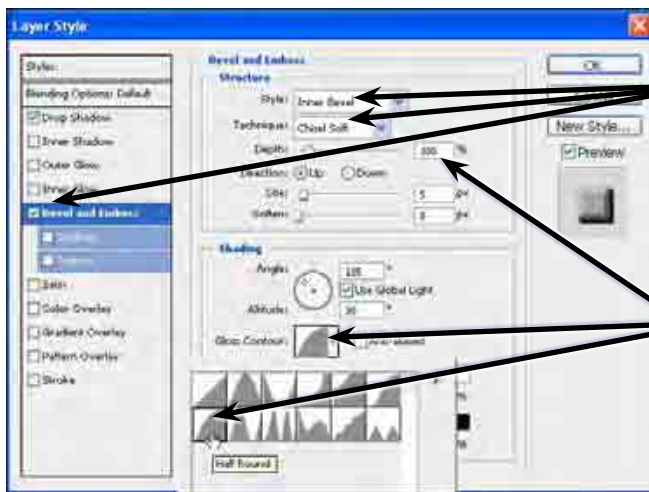


2 Set the OPACITY to 100% and the ANGLE to 135°.

3 Set the DISTANCE to 4 px, the SPREAD to 0 and the SIZE to 2 px.

NOTE: These settings will give the text a small, but sharp drop shadow.

B Adding a Bevel



1 Turn on BEVEL AND EMBOSS, leave INNER BEVEL selected and set the TECHNIQUE to CHISEL SOFT.

2 Leave the DEPTH at 100% and set the GLOSS CONTOUR to HALF ROUND.



3 Turn off USE GLOBAL LIGHT, set the ANGLE to 135°, the SIZE to 6 px, the SOFTEN to 3 px and select OK.

Creating a Reflection

The text can be given a realistic effect by adding a reflection to it.

A Copying the Text Layer



1 Collapse the styles in the text layer and duplicate the layer by dragging it over the CREATE A NEW LAYER icon.