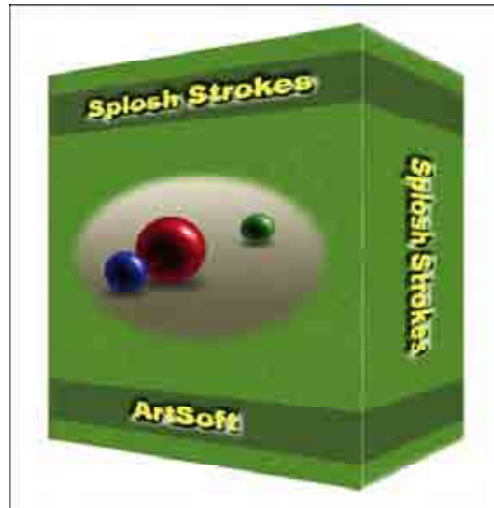


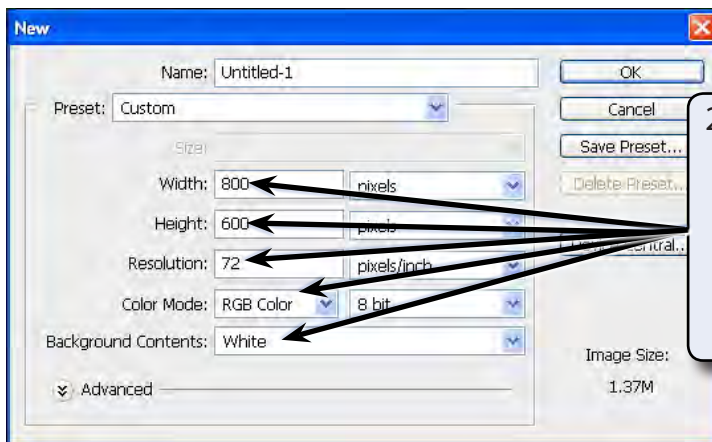
Creating Accurate Shapes

Photoshop provides the tools to create accurate shapes. Let's say that you have been contracted by the software producer, ArtSoft, to produce an image of the box for their recently released graphics program, Splosh Strokes, so that it can be placed on their web site. The following image will be produced:



Starting a New Document

- 1 Load Photoshop or close the current files then display the FILE menu and select NEW.



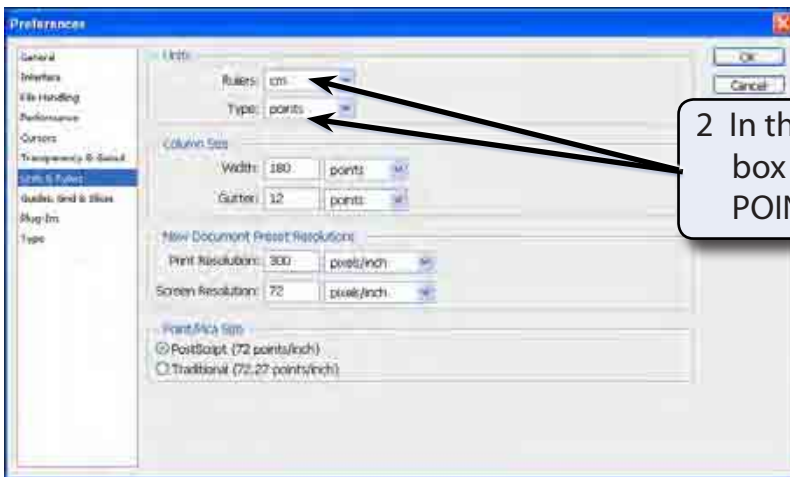
2 Set the WIDTH to 800 pixels, the HEIGHT to 600 pixels, the RESOLUTION to 72 pixels/inch, the COLOUR MODE to RGB COLOUR, 8 BIT and the BACKGROUND COLOUR to WHITE.

- 3 Select OK to start the document.

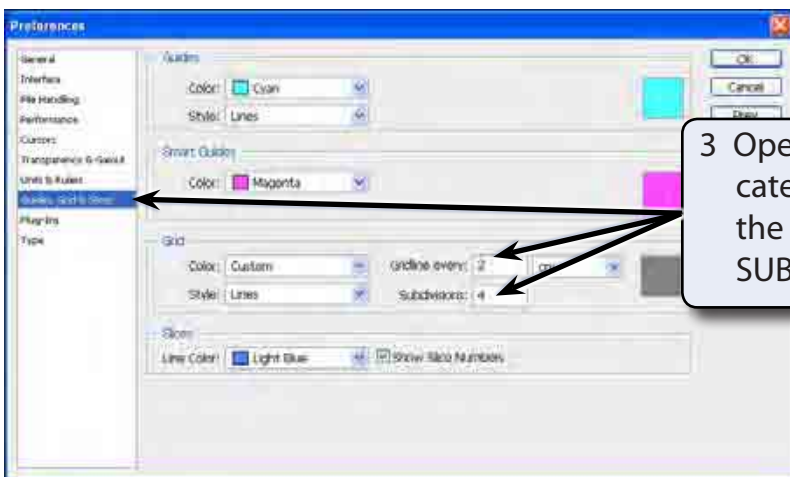
Setting the Ruler and Grid Units

You will be using RULERS and a GRID to accurately create the box, so the settings need to be checked.

- 1 On the Windows system display the EDIT menu, highlight PREFERENCES and select UNITS & RULERS. On the Macintosh system display the PHOTOSHOP menu, highlight PREFERENCES and select UNITS & RULERS.



2 In the UNITS frame set the RULERS box to CM and the TYPE box to POINTS.

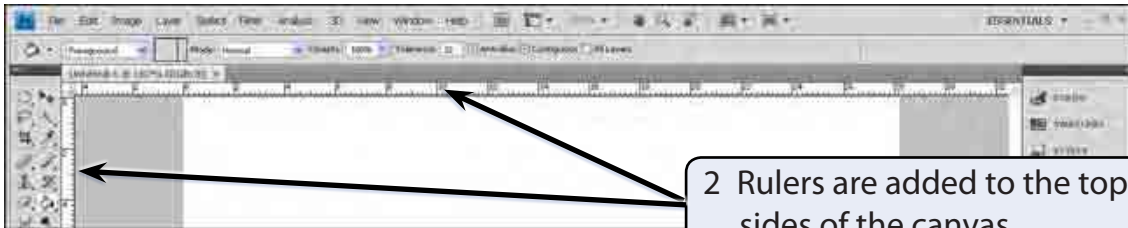


3 Open the GUIDES, GRID & SLICES category and, in the GRID frame, set the GRIDLINE EVERY box to 2 cm, the SUBDIVISIONS to 4 and select OK.

NOTE: You can also use the GUIDES, GRID & SLICES section to set the colour of the grid and guide lines.

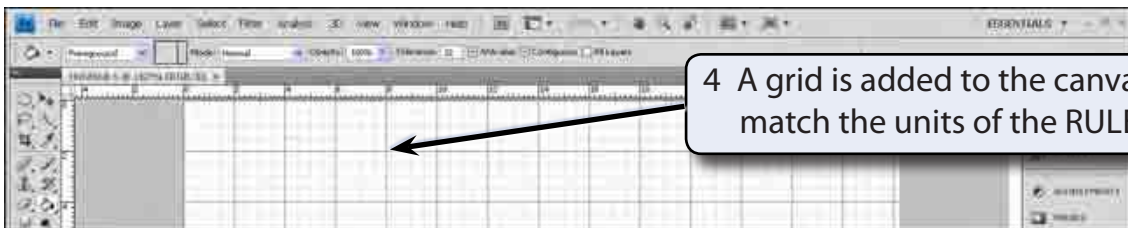
Turning on the Rulers and Grid

1 Display the VIEW menu and select RULERS.



2 Rulers are added to the top and left sides of the canvas.

3 Display the VIEW menu again, highlight SHOW and select GRID.

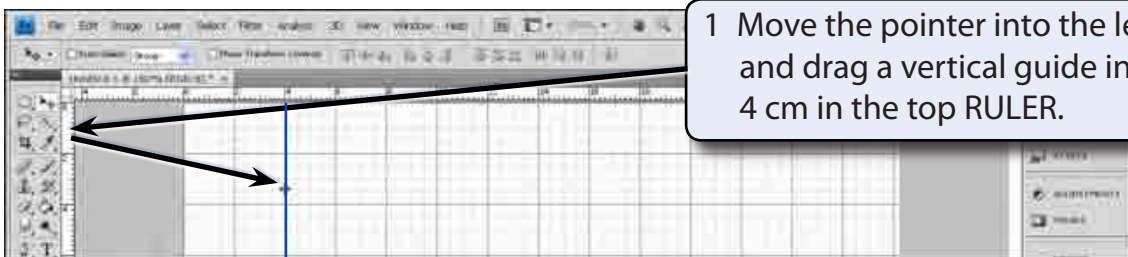


4 A grid is added to the canvas to match the units of the RULERS.

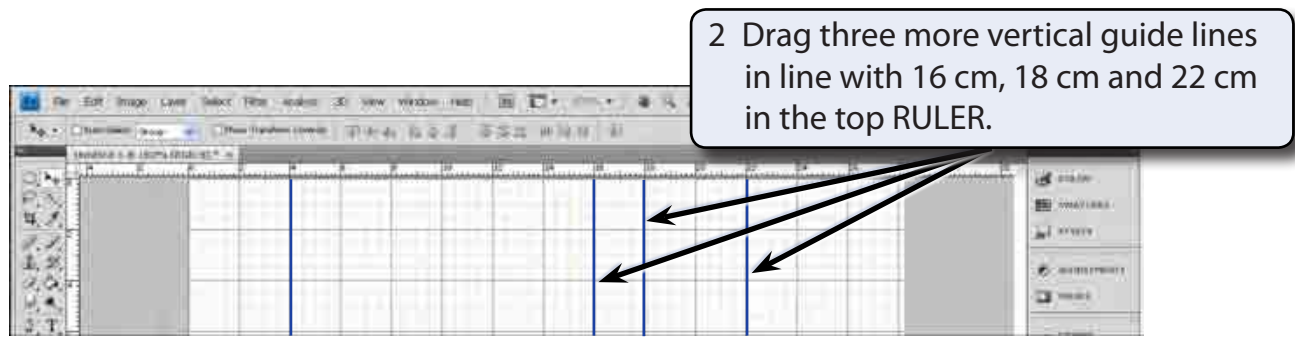
NOTE: You can **RIGHT+CLICK** or **CONTROL+CLICK** on the **RULERS** to quickly change their units

Setting Guide Lines

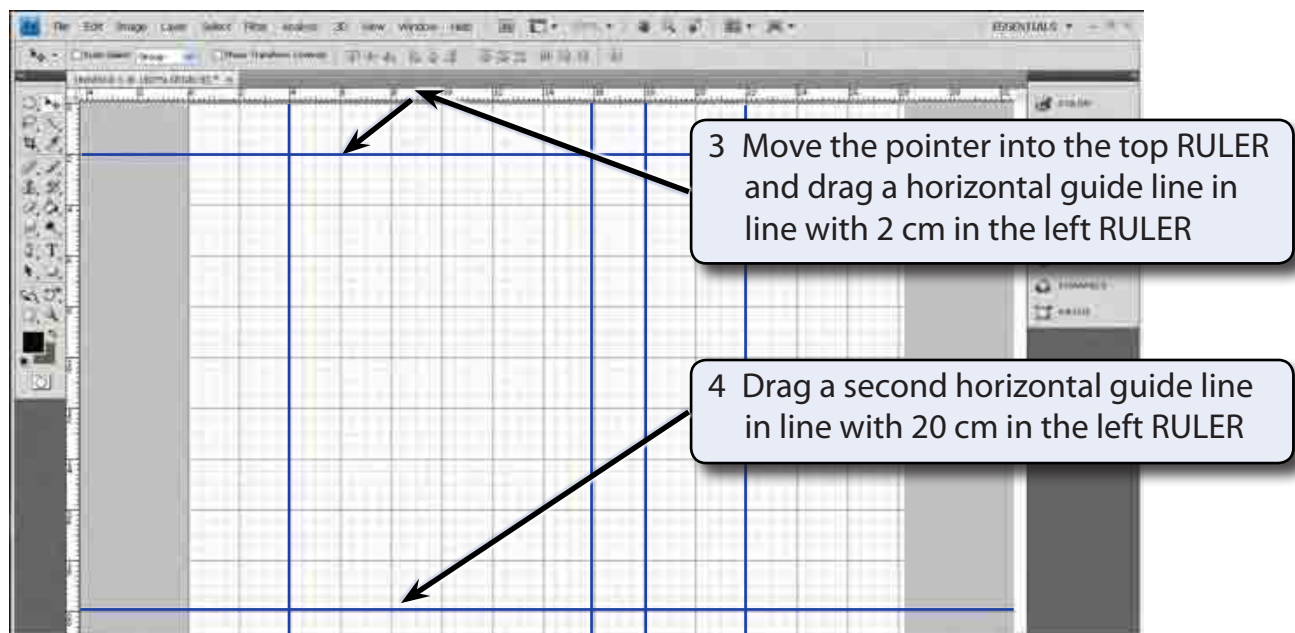
You can add guide lines to the canvas to help you layout a sketch. In this case guide lines will be needed for the front and side of the box.



1 Move the pointer into the left RULER and drag a vertical guide in line with 4 cm in the top RULER.



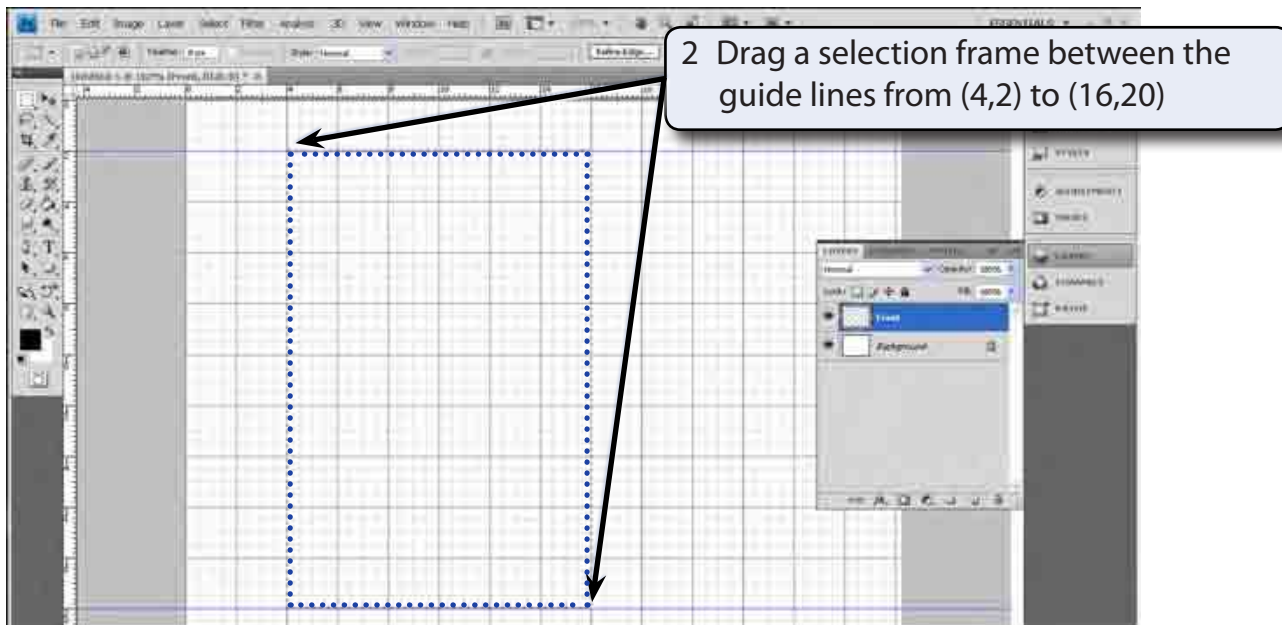
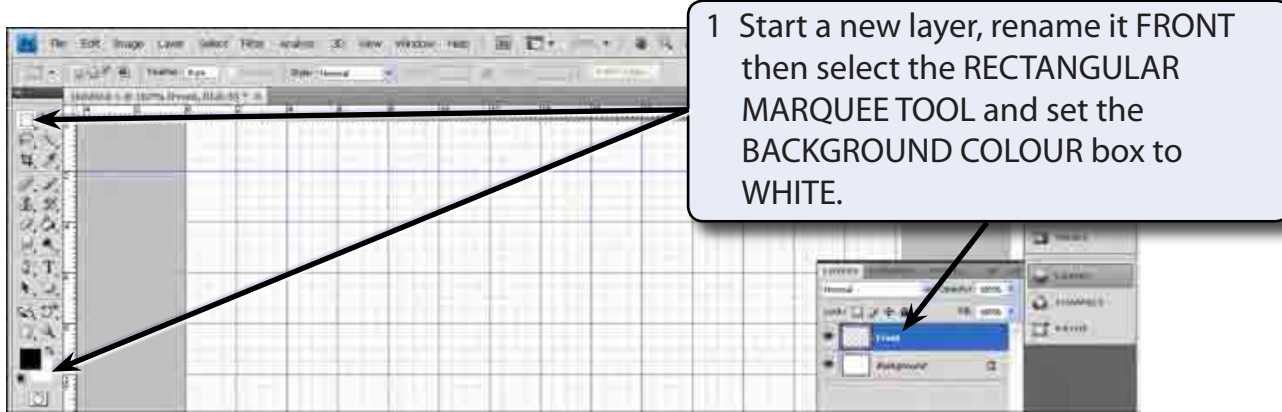
NOTE: You can move guide lines to new positions by selecting the **MOVE TOOL**, moving the pointer over the guide line until it changes to parallel lines with arrows and dragging the guide line to a new position. Dragging a guide line back to its **RULER** removes the guide line from the screen.



Creating the Front of the Box

A Setting a Green Rectangle

A rectangular selection frame will added to the canvas and filled with green so that it has no border.



3 Display the EDIT menu and select FILL.