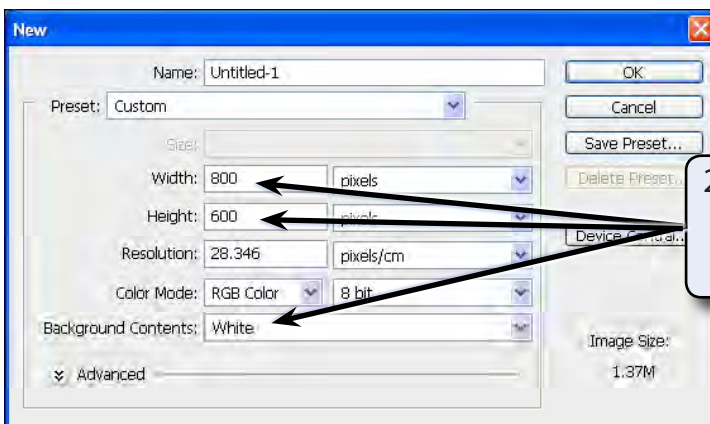


Creating 3D Shapes

Photoshop CS4 Extended provides extensive tools to create and edit 3D shapes. This chapter will introduce a few of these tools. If you are not using the extended version of Photoshop CS4, you will need to skip this chapter.

Starting a New Document

- 1 Load Photoshop or close the current file then display the FILE menu and select NEW.



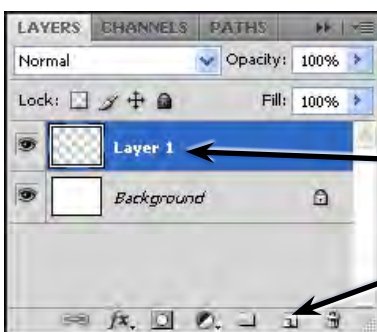
2 Set the WIDTH to 800 pixels, the HEIGHT to 600 pixels and the BACKGROUND COLOUR to WHITE.

- 3 Select OK to start the document.

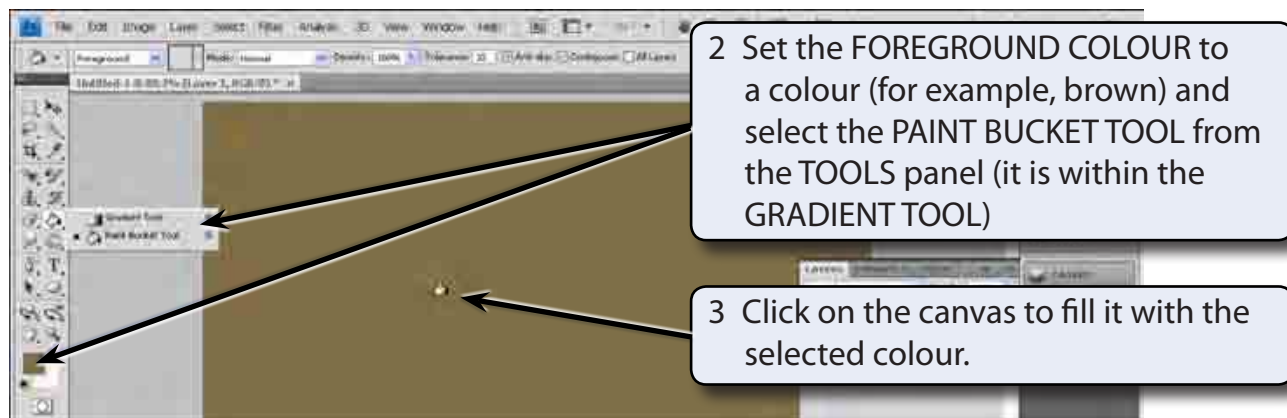
Creating Shapes

A Setting the Layer

3D shapes are created from layers so you need to setup the layer first.

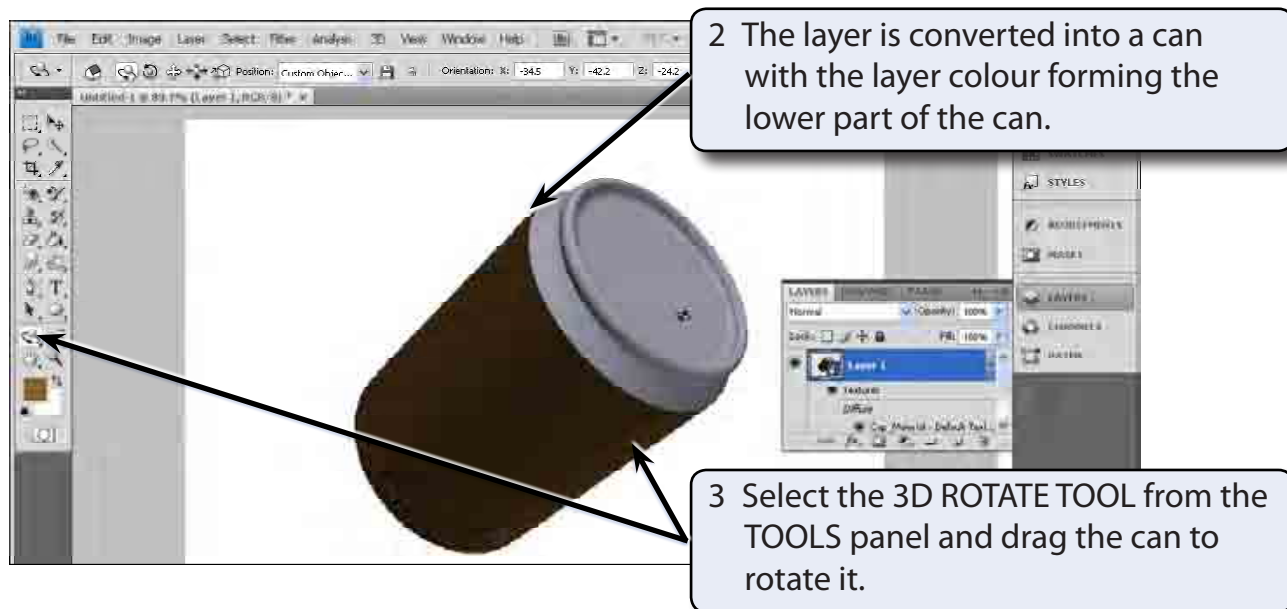


1 Expand the LAYERS panel and create a NEW LAYER.

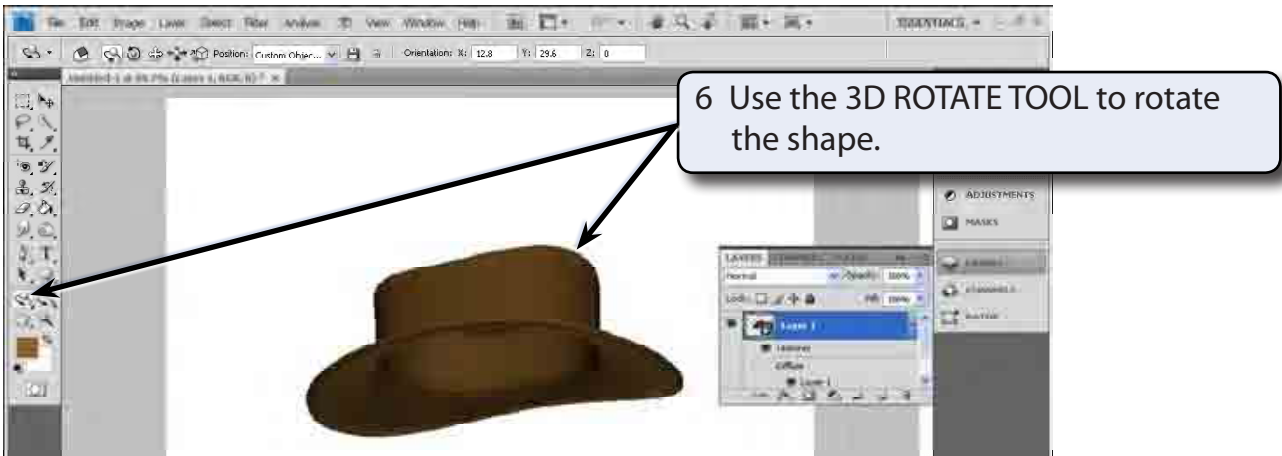


B Converting the Layer to a 3D Shape

- 1 Display the 3D menu, highlight NEW SHAPE FROM LAYER and select the SODA CAN.



- 4 Press STEP BACKWARDS (CTRL+ALT+Z or OPTION+COMMAND+Z) until the filled layer is returned to the screen.
- 5 Display the 3D menu, highlight NEW SHAPE FROM LAYER and select a different shape, such as HAT.



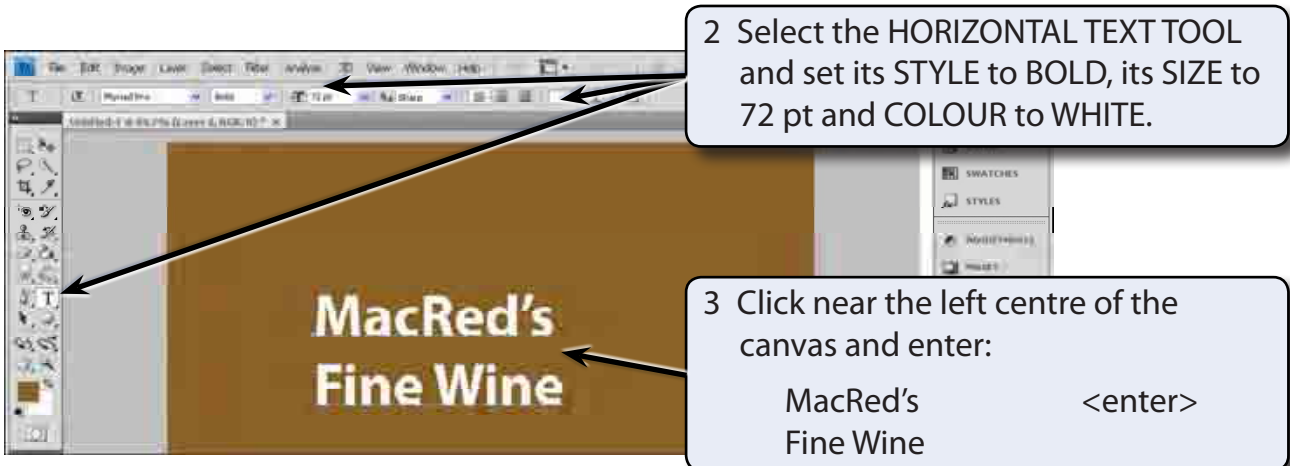
- 7 Press STEP BACKWARDS (CTRL+ALT+Z or OPTION+COMMAND+Z) until the filled layer is returned to the screen and try some of the other shapes.

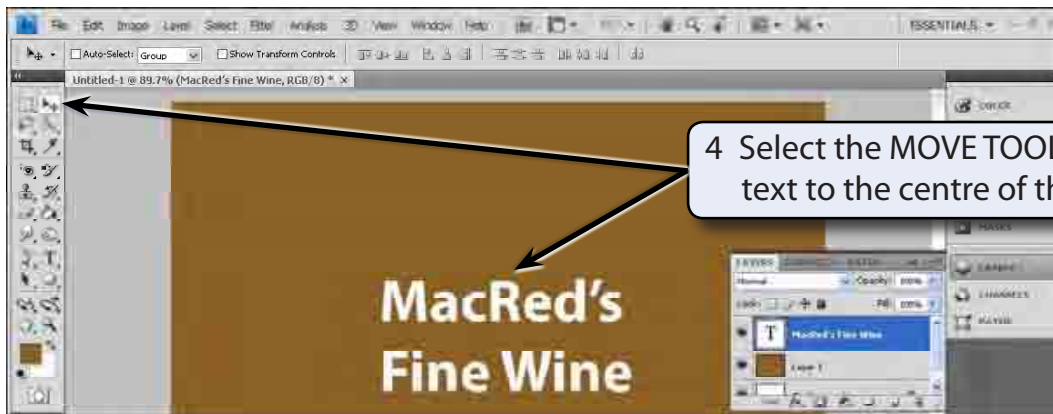
NOTE: Shapes such as the soda can and the hat can be created then used in other images.

Adding Text to 3D Shapes

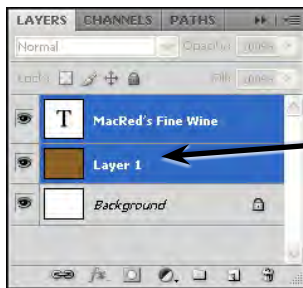
You can include text in a 3D Shape. To illustrate this a label will be added to a wine bottle.

- 1 Press STEP BACKWARDS (CTRL+ALT+Z or OPTION+COMMAND+Z) until the filled layer is returned to the screen.



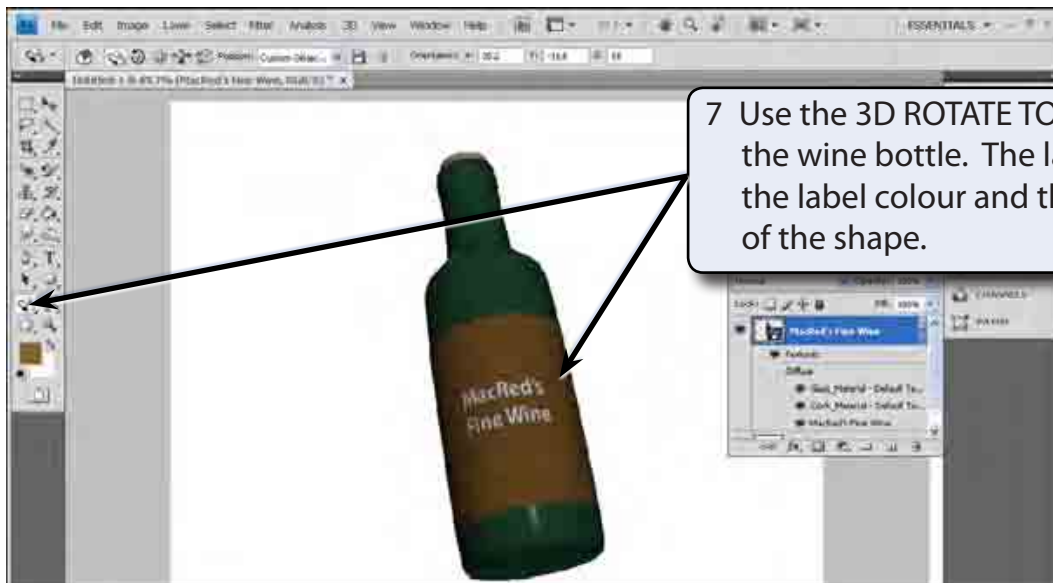


4 Select the MOVE TOOL and move the text to the centre of the canvas.



5 In the LAYERS panel SHIFT+CLICK on the LAYER 1 layer so that both it and the text layer are selected.

6 Display the 3D menu, highlight NEW SHAPE FROM LAYER and select WINE BOTTLE.



7 Use the 3D ROTATE TOOL to rotate the wine bottle. The layer colour is the label colour and the text is part of the shape.

8 Save the wine bottle if you wish.