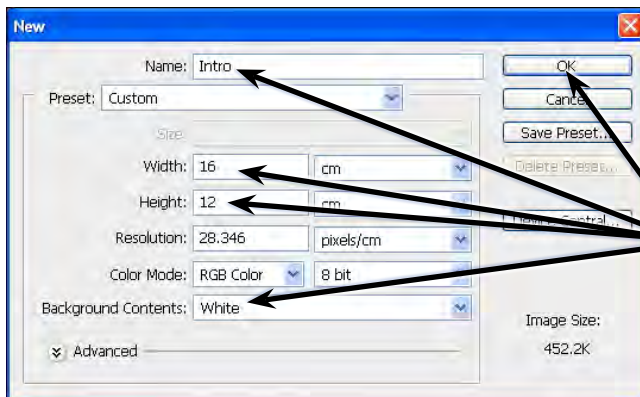


Introduction to Photoshop

Adobe Photoshop is an advanced photo editing and graphics program that allows you to create and edit photo quality images. In this Chapter you will be introduced to its screen and some of its basic features, such as Layers. Layers are the building blocks of using Photoshop and you need to develop an understanding of how to use them in order to use Photoshop effectively.

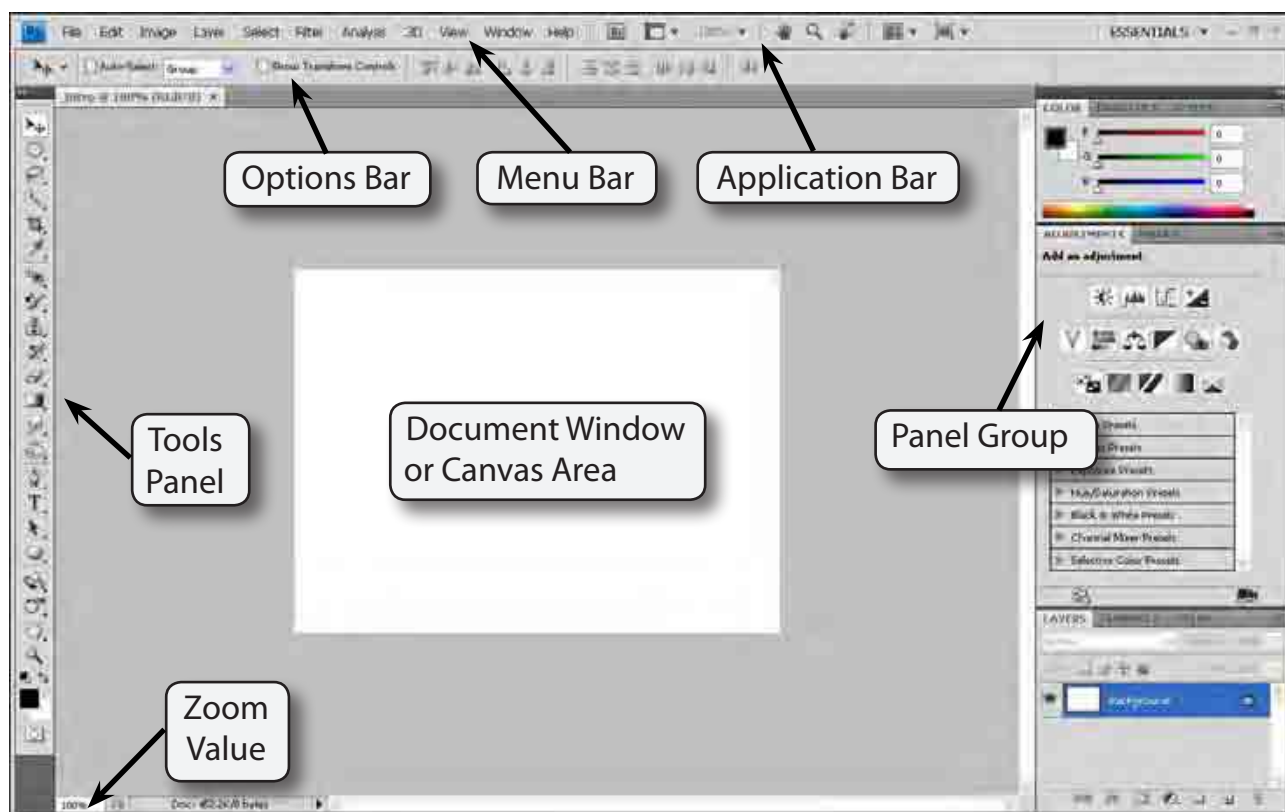
Loading Photoshop

- 1 Load Photoshop CS4 and you will receive the Photoshop screen.
- 2 Display the FILE menu and select NEW. You will be asked to enter the required settings for the page.



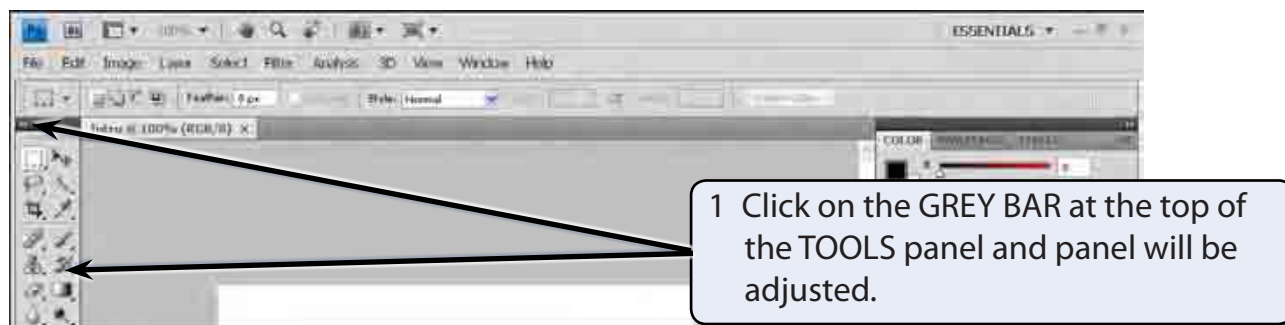
3 Enter the page name: Intro
Set the HEIGHT to 16 cm, the
WIDTH to 12 cm, the BACKGROUND
CONTENTS to WHITE and select OK.

- 4 A blank page should be created. The diagram at the top of the next page labels its sections.



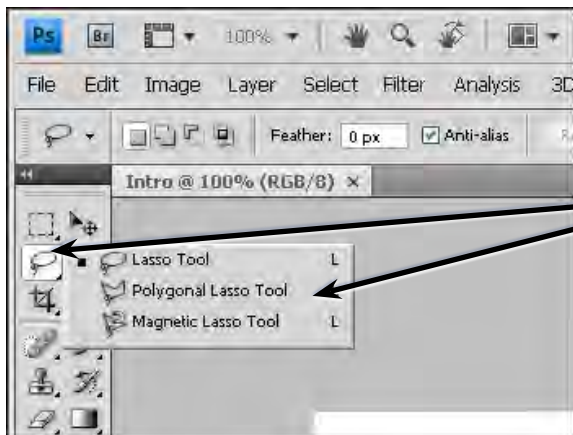
The Tools Panel

The TOOLS panel at the left of the screen provides general drawing and photo adjustment tools. The panel can be displayed as a single column or with the tools in two columns.



- 2 In these tutorials the TOOLS panel will be used as 2 columns, so click on the GREY BAR until the tools are displayed in 2 columns.

- 3 Tools that have a small arrow next to them have more tools within them.

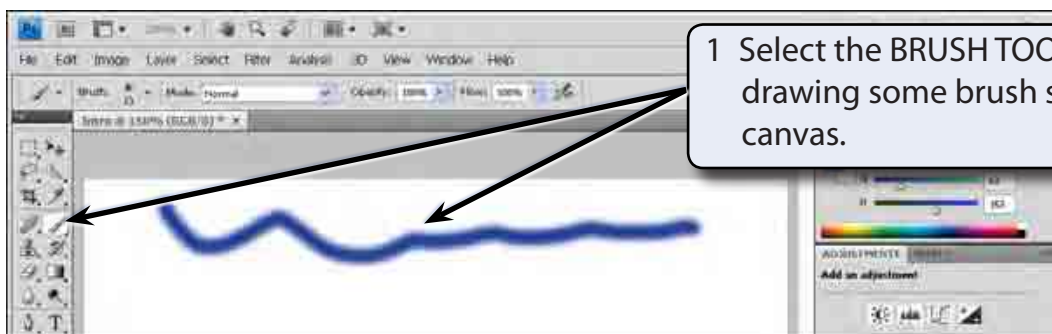


4 Click and hold on the LASSO tool the three lasso tool types will be displayed.

- 5 Click and hold on some of the other tools to see what extra tools they contain.
- 6 The letter displayed next to a tool when you click and hold on it is the keyboard shortcut to select that tool. Try pressing some letters and the tool corresponding to that letter should be selected.
- 7 Hold down the SHIFT key and press a letter. The tools within that tool group will be toggled.

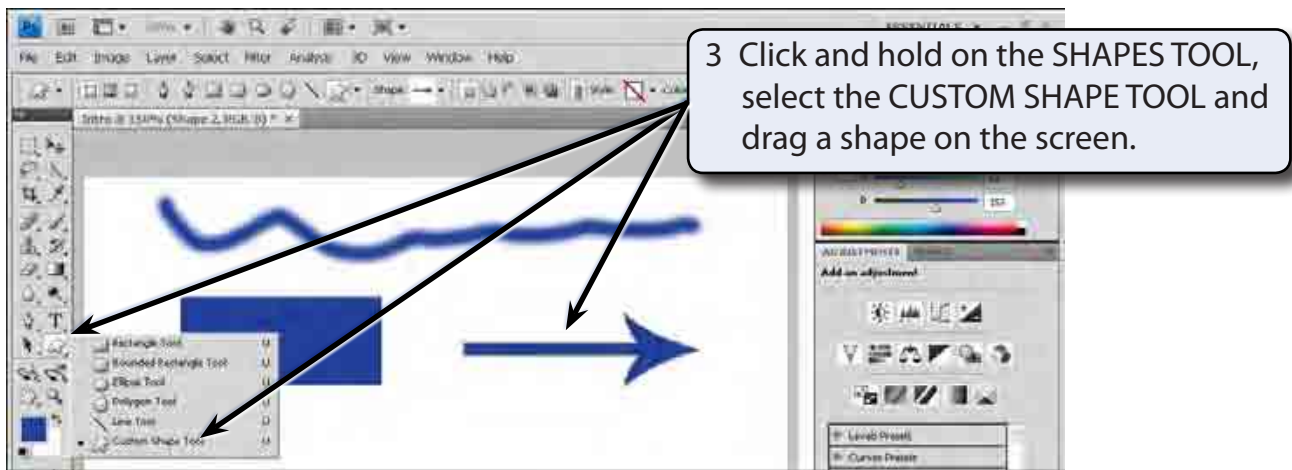
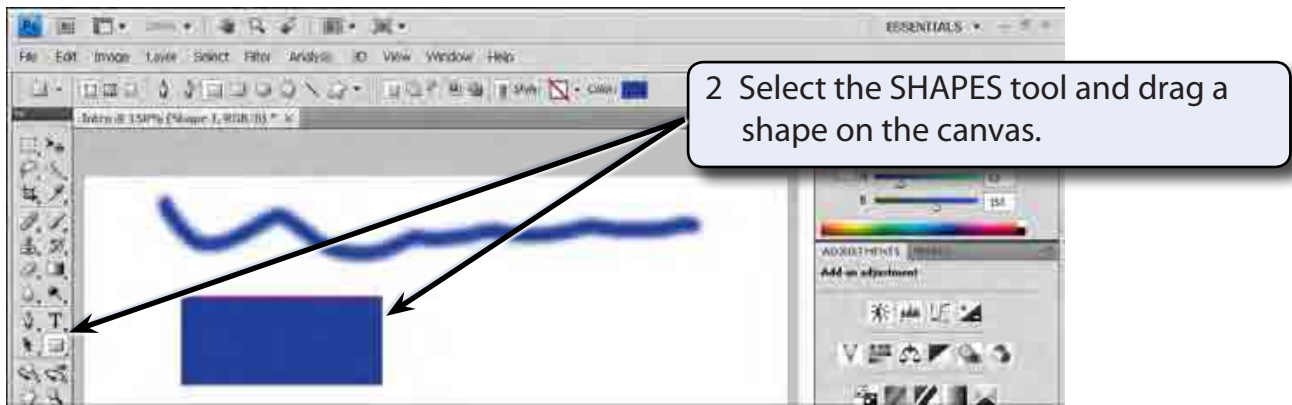
Using the Tools

We will have a quick look at some of Photoshop's basic drawing tools. You may need to click and hold on a tool to select it, depending on who has used to program before you.

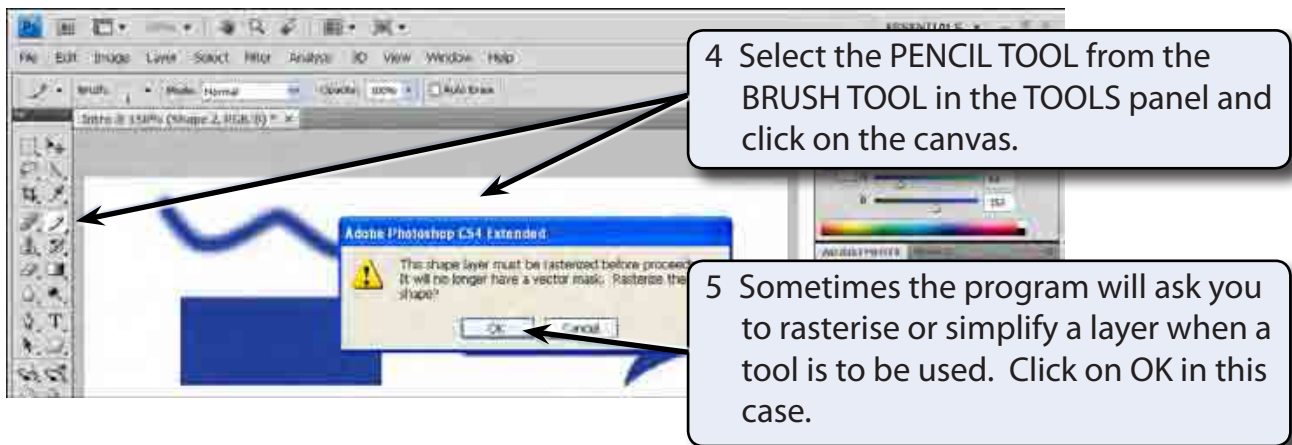


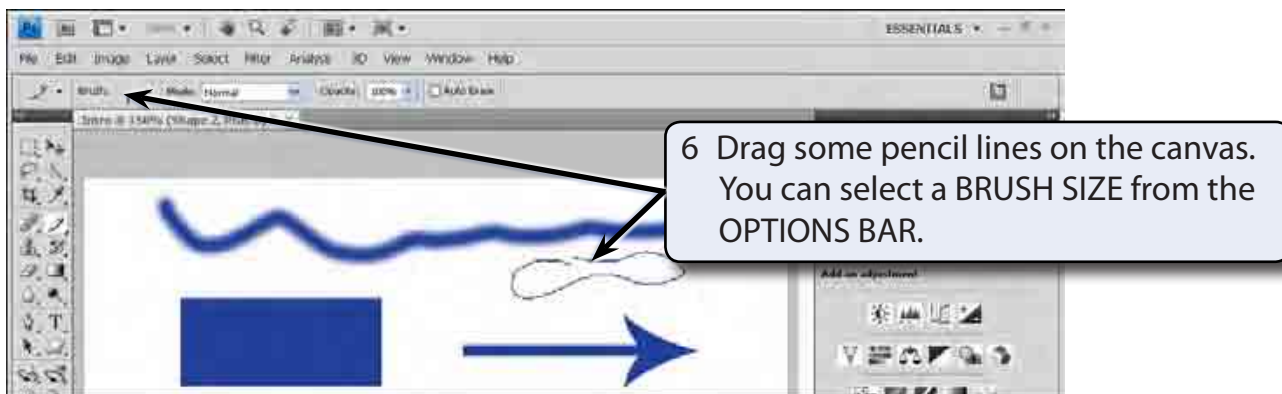
1 Select the BRUSH TOOL and try drawing some brush strokes on the canvas.

NOTE: You can use the ZOOM BOX at the bottom left of the screen to increase the screen view if you wish.



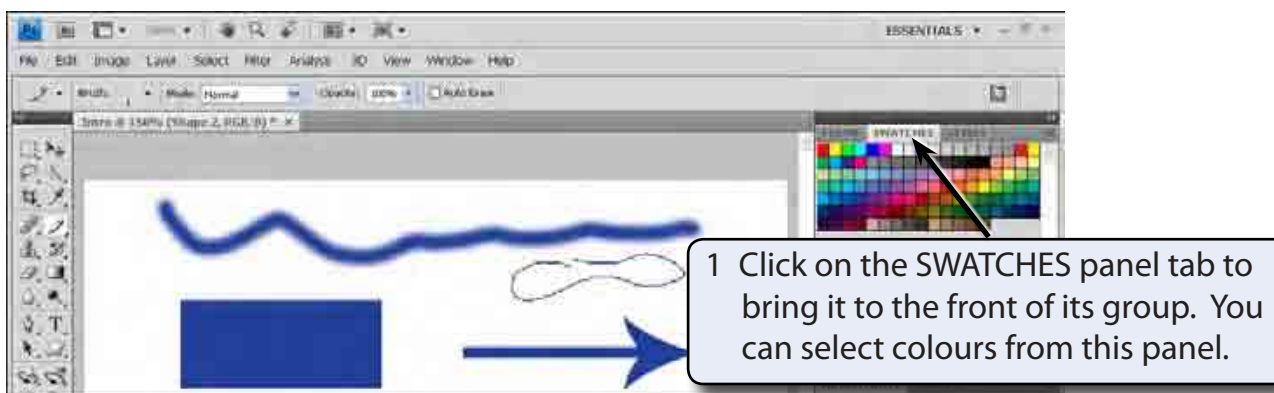
NOTE: Your shape will probably be different to the one displayed. The **SHAPE** box in the **OPTIONS BAR** at the top of the screen can be used to select different shapes.





The Panel Group

At the right of the screen are a series of panels that contain many of Photoshop's operating tools and features. Some of these panels are open, some behind the opened panels and some are collapsed. You simply open the required panel when you need to use a tool by clicking on its tab or its icon. You can also add or remove panels from the group.



- NOTE:**
- i If the **SWATCHES** panel is not in the **PANEL GROUP** you can display the **WINDOW** menu and select **SWATCHES** to open it.
 - ii If your screen is totally different to the one in the diagram, set the box at the right of the **APPLICATION BAR** to the **ESSENTIALS** workspace.