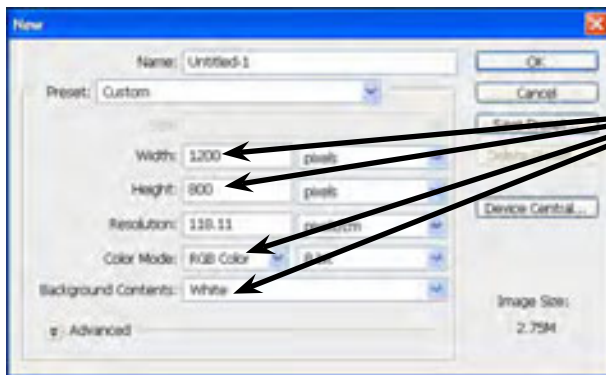


# Adding Text to Designs

Text can be added to photographs and manipulated. There are text effects available to curve letters, display them vertically, set text to follow a path and applying similar effects to those you added to shapes in the last chapter, etc.

## Starting a New Document

- 1 Load Photoshop or close the current file and select NEW from the FILE menu.

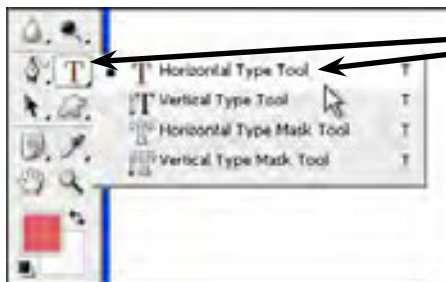


- 2 Set the WIDTH to 1200 pixels, the HEIGHT to 800 pixels, the COLOUR MODE to RGB COLOUR and the BACKGROUND CONTENTS to WHITE.

- 3 Select OK to start the page.

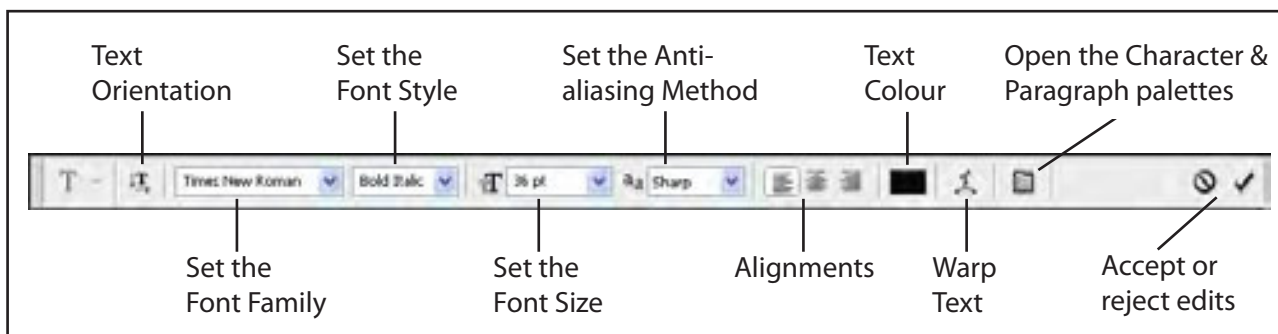
## Entering Text

The TEXT TOOLS are housed in the TYPE icon in the TOOLS palette.

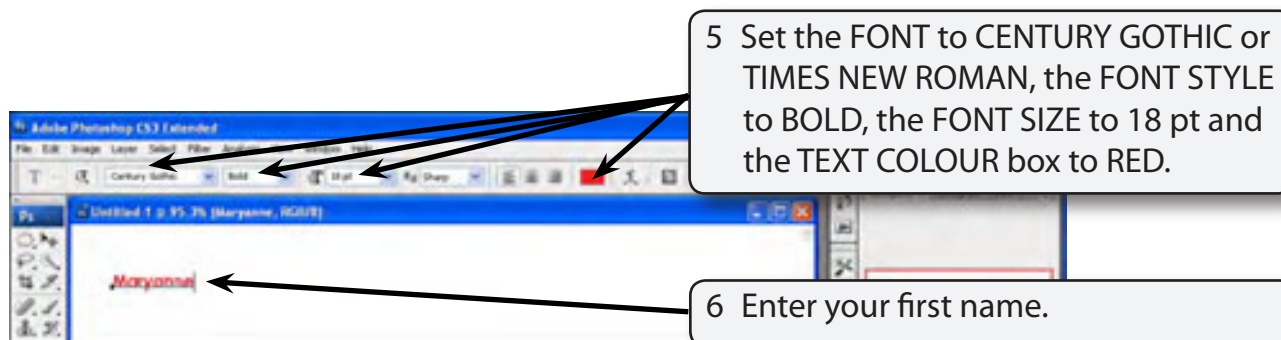


- 1 Click and hold down the mouse button on the TYPE TOOL and select the HORIZONTAL TYPE TOOL.

- 2 The OPTIONS BAR should display the text options which are labelled in the diagram at the top of the next page.



- 3 Set the VIEW to FIT ON SCREEN by pressing CTRL+0 on the Windows system or COMMAND+0 on the Macintosh system.
- 4 Click the cursor (which is now an I-Beam) near the top centre of the screen.

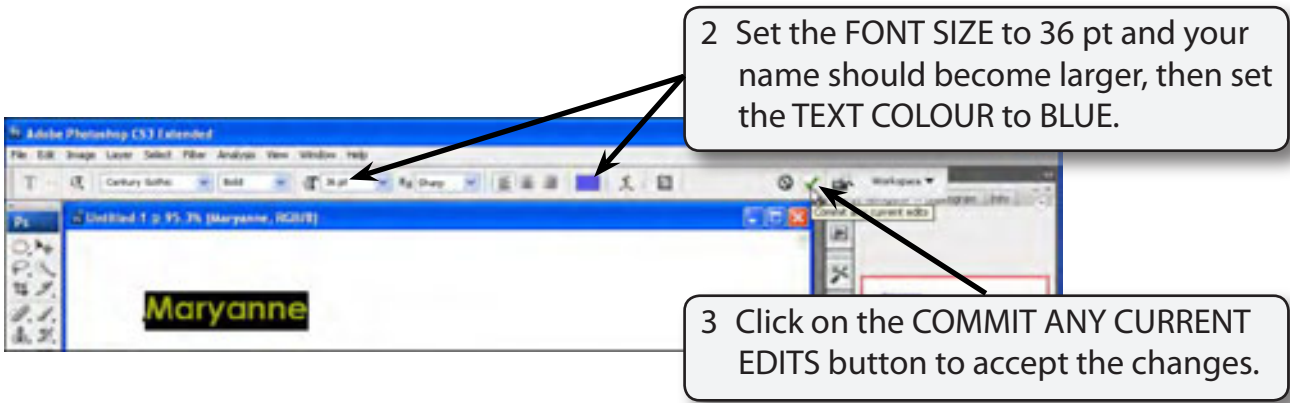


**NOTE:** A text layer is created when you click the I-Beam on the canvas.

## Altering Text

You can alter text once it has been entered.

- 1 Highlight your name by dragging the I-Beam across the letters or by double clicking on the letters.



2 Set the FONT SIZE to 36 pt and your name should become larger, then set the TEXT COLOUR to BLUE.

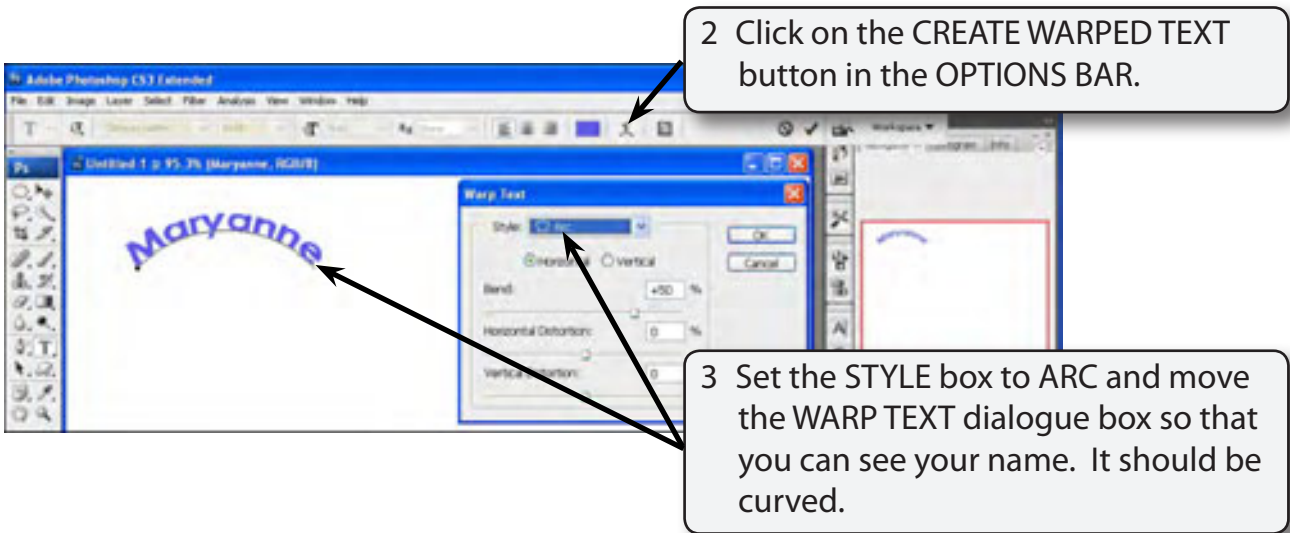
3 Click on the COMMIT ANY CURRENT EDITS button to accept the changes.

## Warping Text

There are a number of special curved effects that can be applied to the text. These are found in the WARP TEXT button in the OPTIONS BAR.

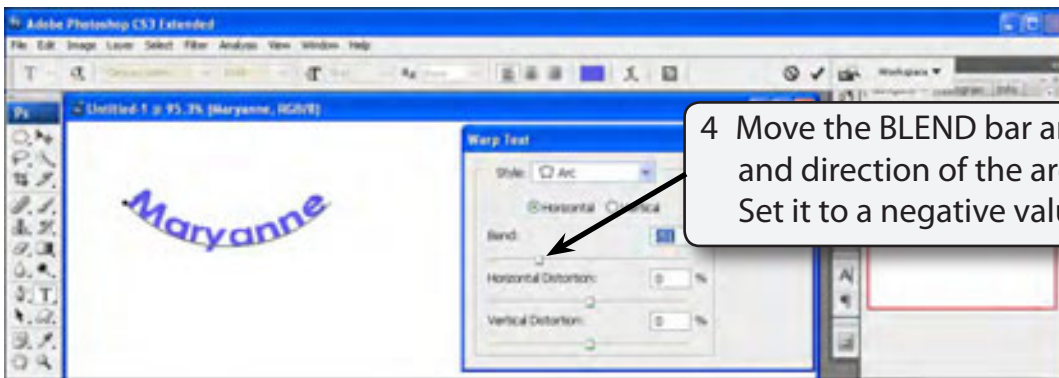
### A Single Arced Text

- 1 Click the I-Beam anywhere in your name.

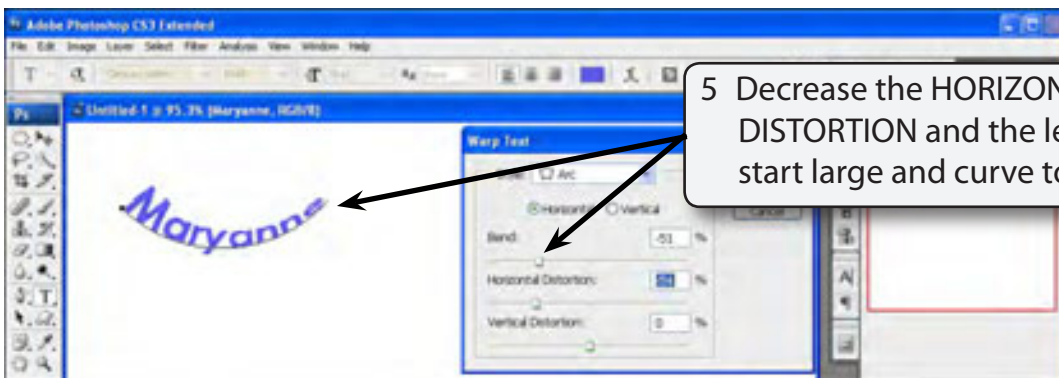


2 Click on the CREATE WARPED TEXT button in the OPTIONS BAR.

3 Set the STYLE box to ARC and move the WARP TEXT dialogue box so that you can see your name. It should be curved.

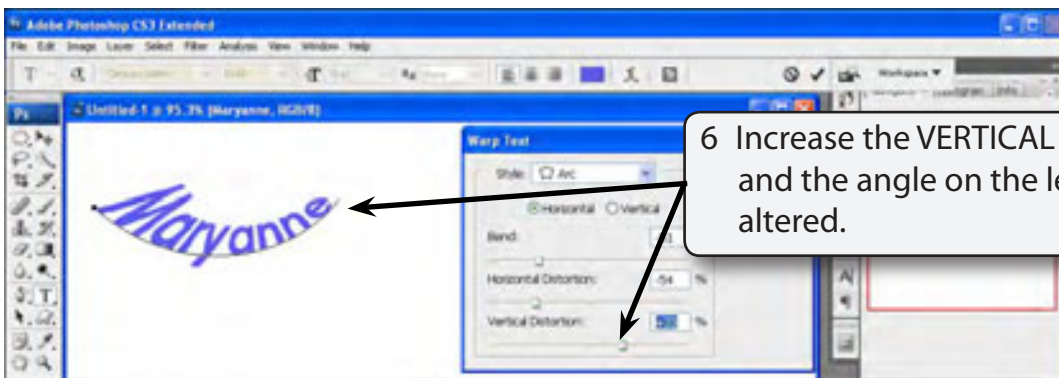


4 Move the BLEND bar and the size and direction of the arc will change. Set it to a negative value.

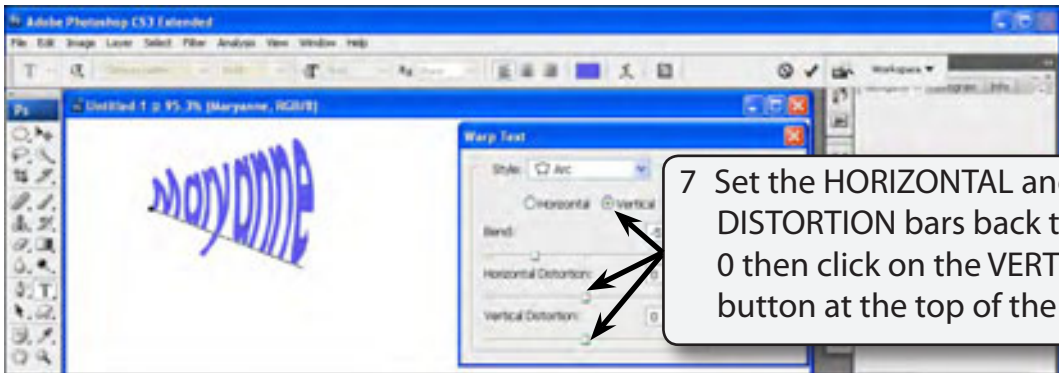


5 Decrease the HORIZONTAL DISTORTION and the letters should start large and curve to smaller.

**NOTE:** The reverse occurs if you increase the HORIZONTAL DISTORTION.

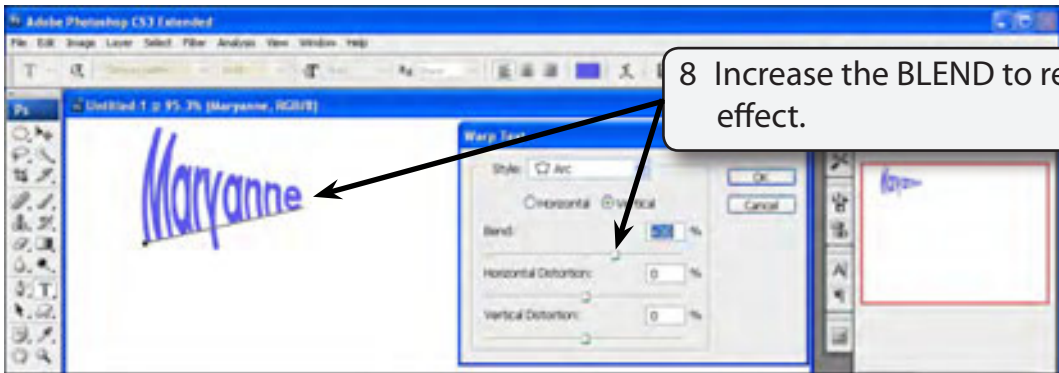


6 Increase the VERTICAL DISTORTION and the angle on the letters will be altered.

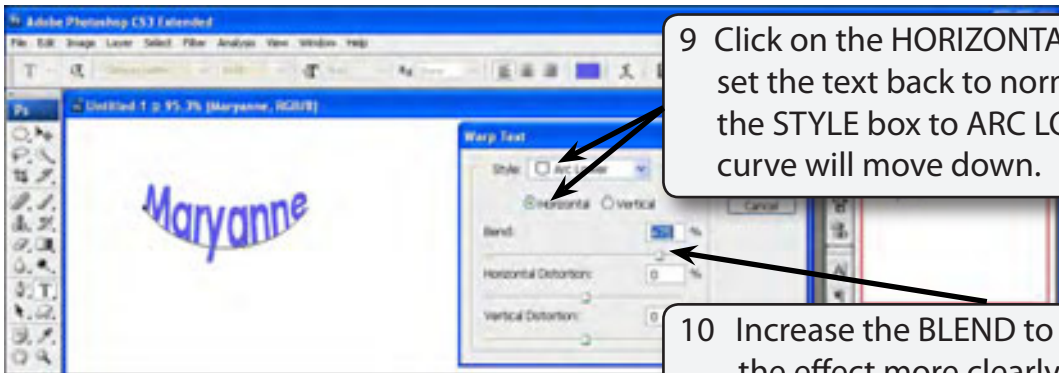


7 Set the HORIZONTAL and VERTICAL DISTORTION bars back to close to 0 then click on the VERTICAL radio button at the top of the dialogue box.

**NOTE:** The VERTICAL option gives text the illusion of the text moving out of the screen.



8 Increase the BLEND to reverse the effect.



9 Click on the HORIZONTAL button to set the text back to normal then set the STYLE box to ARC LOWER and the curve will move down.

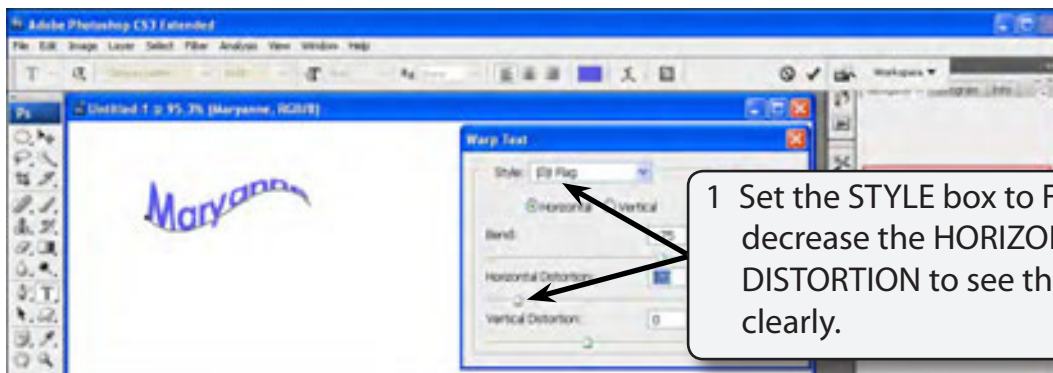
10 Increase the BLEND to +75% to see the effect more clearly.

**NOTE:** Setting the STYLE box to ARC UPPER will set the curve to a slightly different curve up to the normal ARC style.

- 11 Try setting the STYLE box to ARCH, BULGE, SHELL LOWER and SHELL UPPER to see the effect of these styles.

## B Multiple Arcs

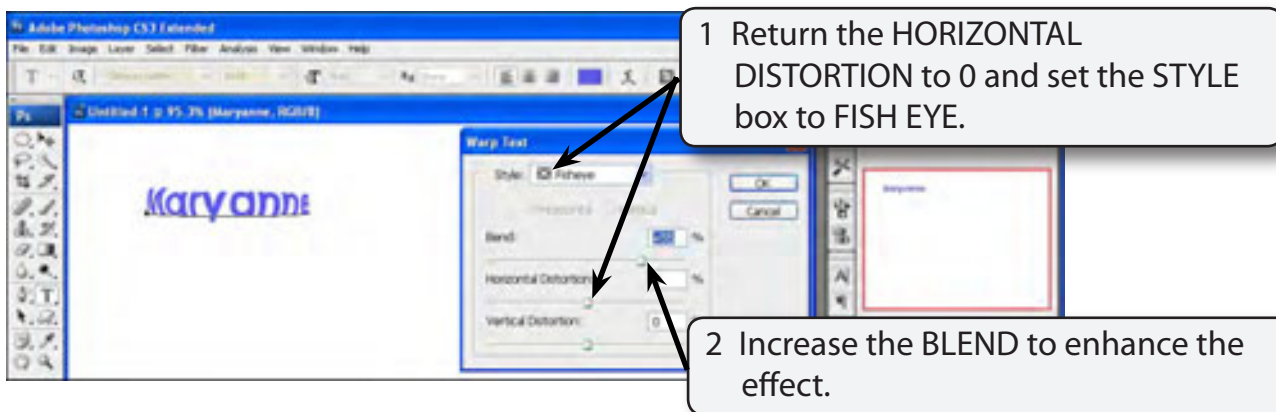
You can also set text to wave along a path. In other words, arc more than once.



- 2 Try setting the STYLE box to WAVE, FISH, and RISE to see the effect of these styles.

## C 3-Dimensional Effects

Warping can also be used to set 3-dimensional effects.



**NOTE:** As you read across your name the centre letters appear you come out of the screen.

- 3 Try setting the STYLE box to INFLATE, SQUEEZE and TWIST to see the effect of those styles.