

Repairing Images and Moving Content

As you have seen with removing backgrounds or selecting parts of images, Photoshop provides numerous tools to carry out steps. The same applies to repairing sections of images and quickly moving content. The PATCH TOOL and two HEALING BRUSH TOOLS can be used to repair blemishes in images, and the CONTENT AWARE MOVE TOOL can be used to quickly move part of an image to another section of the same image.

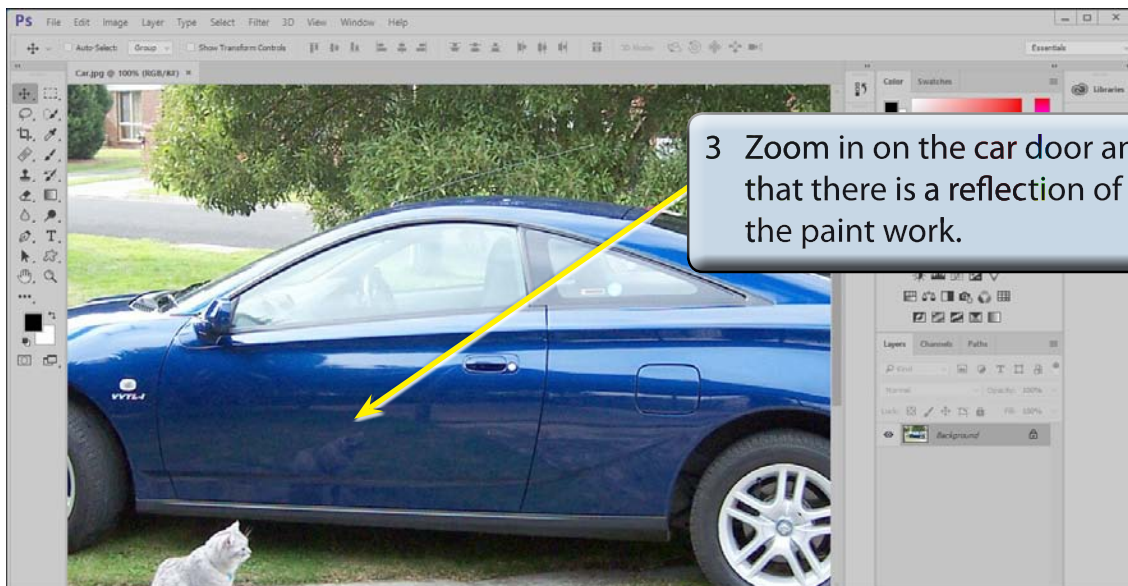
The Patch Tool

The PATCH TOOL allows you to replace areas of an image with pixels from another area. The PATCH TOOL tries to match the texture, lighting and shading of the sampled area with the area to be patched.

A Loading the Image

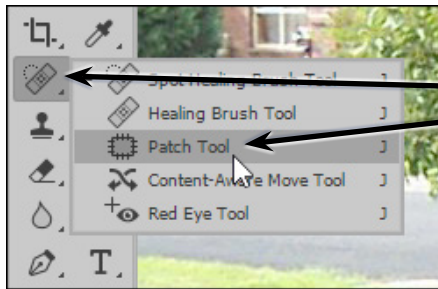
- 1 Load Photoshop or close the current file and click on the OPEN button in the WELCOME screen or select OPEN from the FILE menu.
- 2 Access the PScC SUPPORT FILES, open the CHAPTER 14 folder and open the file:

Car

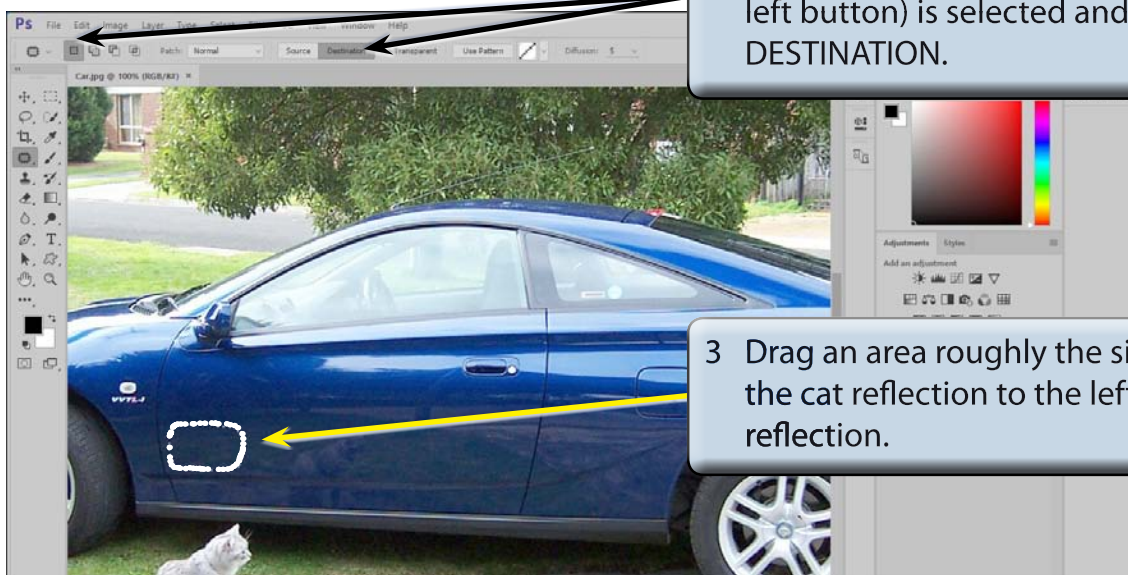


- 4 Let's remove the reflection from the paint work.

B Using the Patch Tool

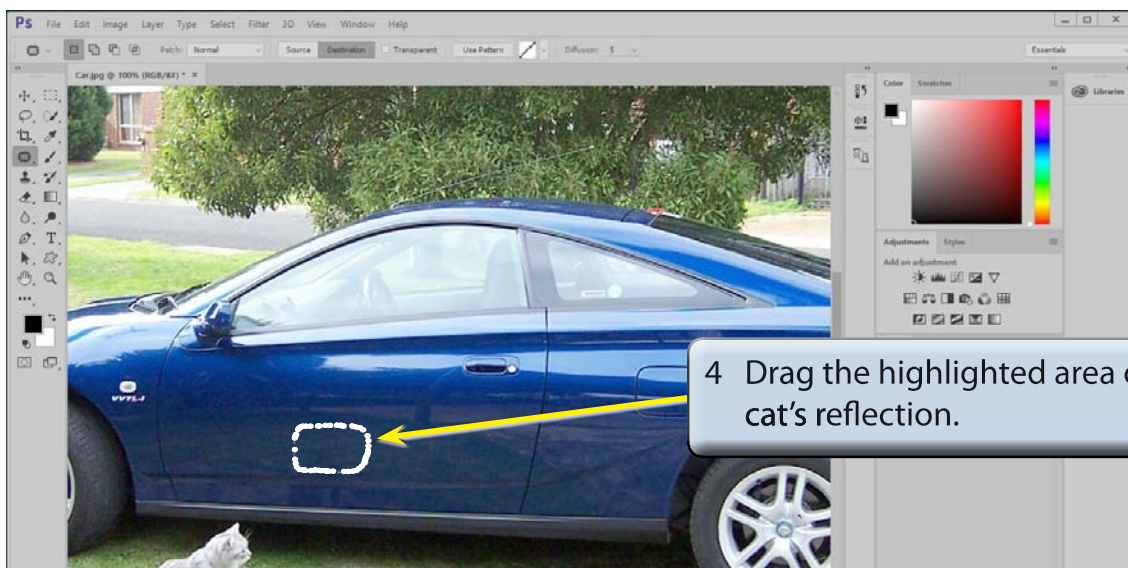


1 Click and hold on the tool below the CROP TOOL in the TOOLS panel and select the PATCH TOOL.

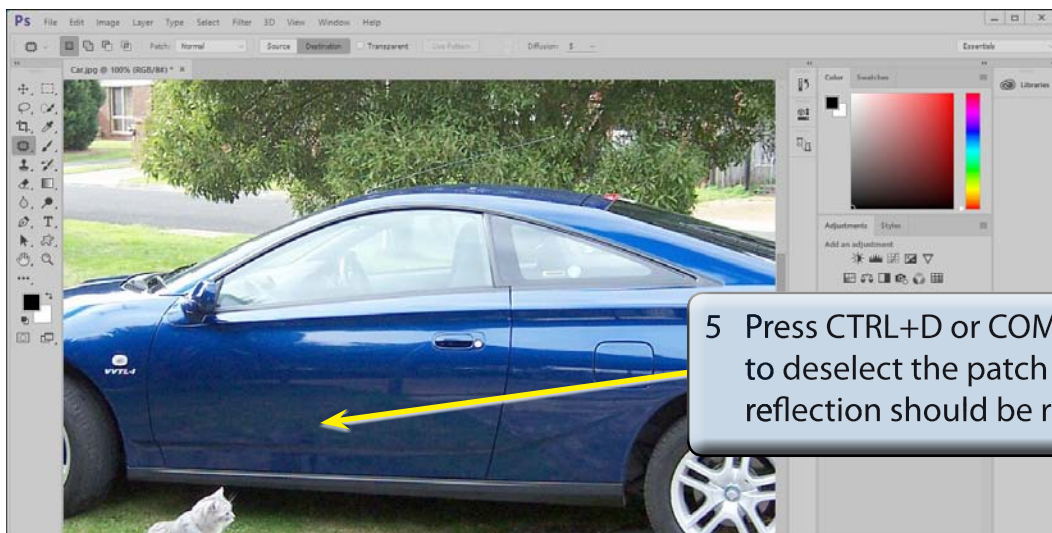


2 In the OPTIONS BAR ensure that the NEW SELECTION button (the left button) is selected and click on DESTINATION.

3 Drag an area roughly the size of the cat reflection to the left of the reflection.



4 Drag the highlighted area over the cat's reflection.



NOTE:

- i You can patch over any sections that are not fully removed.
- ii The PATCH TOOL works best when used with small areas.

- 6 Use SAVE AS from the FILE menu to save the file in your STORAGE folder as a PHOTOSHOP file under the name:

Patch Tool

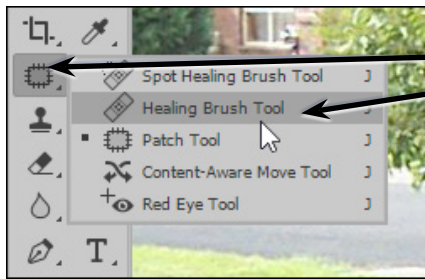
The Healing Brush Tools

There are two healing brush tools that can be used to repair sections of photos, the HEALING BRUSH TOOL and the SPOT HEALING BRUSH TOOL.

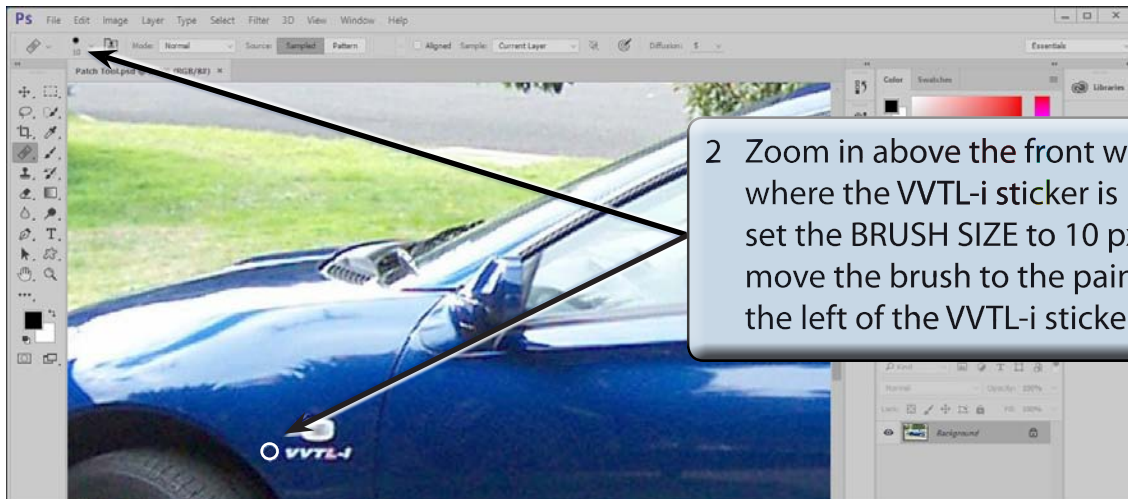
A The Healing Brush Tool

The HEALING BRUSH TOOL allows you select a sample area and apply those pixels to the problem area. It tries to match the texture, lighting, transparency and shading of the sampled area to blend the repaired area with the rest of the image.

Let's use the HEALING BRUSH TOOL to remove the VVTL-i sticker, which is starting to fade.



1 Click and hold on the PATCH TOOL and select the HEALING BRUSH TOOL.



2 Zoom in above the front wheel where the VVTL-i sticker is located, set the BRUSH SIZE to 10 px and move the brush to the paint work at the left of the VVTL-i sticker.

3 Hold down the ALT or OPTION key and click the mouse button to select that area of paint work then release the ALT or OPTION key.



4 Move the pointer next to the first V then hold down the mouse button and paint over the first V to remove it.