

## Creative Text Effects

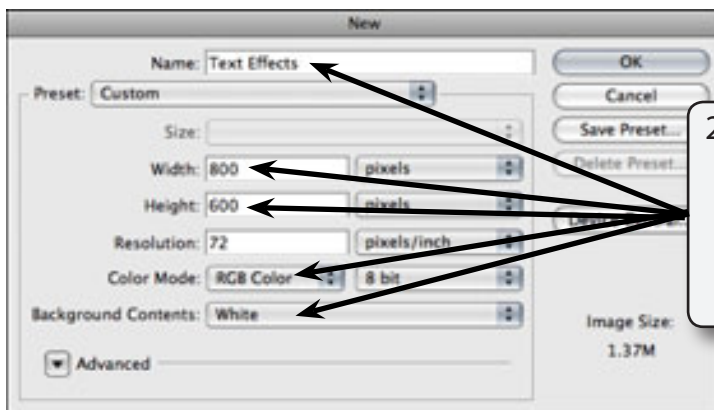
---

You have already created some text effects in the graffiti exercises. Photoshop provides numerous other effects that can be applied to text to create logos, signs, displays, etc. In this exercise some three dimensional or gel effects will be applied to some text, a reflection added followed by some lighting effects to create a display for a slogan.



## Starting a New Document

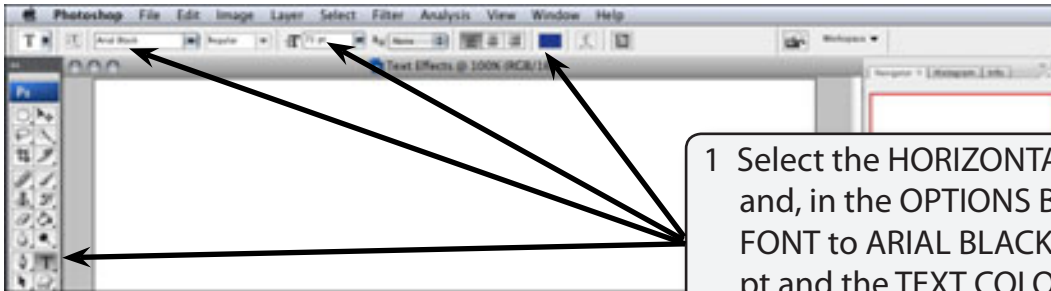
- 1 Load Photoshop, display the FILE menu and select NEW.



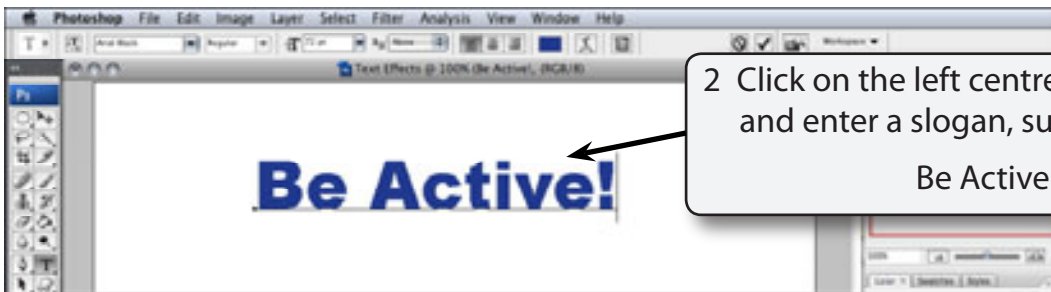
- 2 Call the document TEXT EFFECTS, set the WIDTH to 800 pixels, the HEIGHT to 600 pixels, the COLOUR MODE to RGB COLOUR, 8 BIT and the BACKGROUND COLOUR to WHITE.

- 3 Select OK to start the document.

## Entering the Text



1 Select the HORIZONTAL TEXT TOOL and, in the OPTIONS BAR, set the FONT to ARIAL BLACK, the SIZE to 72 pt and the TEXT COLOUR to DARK BLUE.



2 Click on the left centre of the canvas and enter a slogan, such as:  
Be Active!



3 Select the MOVE TOOL and press CTRL+T or COMMAND+T to display the FREE TRANSFORM frame.

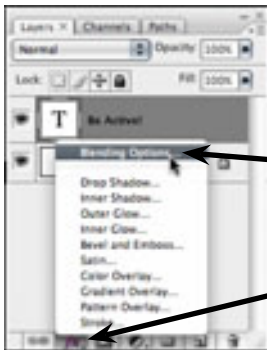
4 Resize the text so that the letters are thick and move the text to the centre of the canvas.

5 Press <enter> or <return> to accept the transformation.

## Adding a Three Dimensional Effect

The text will be given a three dimensional or gel effect.

### A Adding a Drop Shadow



1 Click on the ADD A LAYER STYLE icon at the base of the LAYERS palette and select BLENDING OPTIONS.

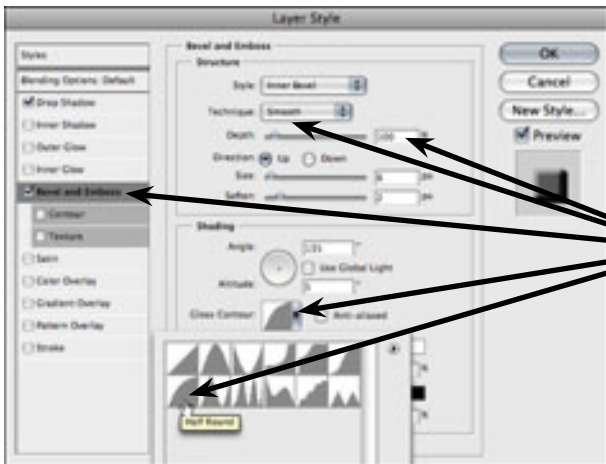


2 Turn on DROP SHADOW, set the OPACITY to 100%.

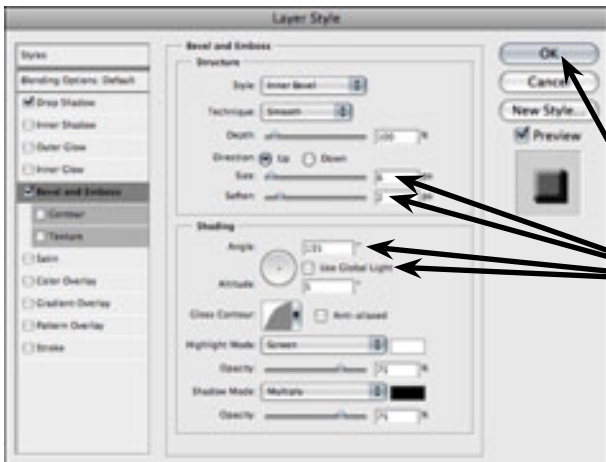
3 Set the ANGLE to 135°, the DISTANCE to 4 px, the SPREAD to 0 and the SIZE to 2 px.

**NOTE:** These settings will give the text a small, but sharp drop shadow.

## B Adding a Bevel



1 Leave INNER BEVEL selected, turn on BEVEL AND EMBOSS, set the TECHNIQUE to CHISEL SOFT, leave the DEPTH at 100% and set the GLOSS CONTOUR to HALF ROUND.

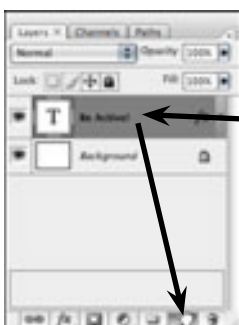


2 Turn off USE GLOBAL LIGHT, set the ANGLE to 135°, the SIZE to 6 px, the SMOOTH to 2 px and select OK.

## Creating a Reflection

The text can be give a realistic effect by adding a reflection to it.

### A Copying the Text Layer



1 Collapse the effects in the text layer and duplicate the layer by dragging it over the CREATE A NEW LAYER