

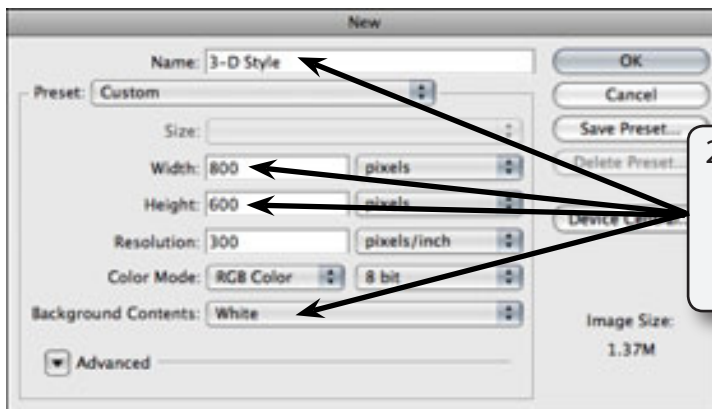
Creating 3-D Styles

You can set accurate 3 dimensional styles and effects on a object then save those effects as a STYLE so that they can be applied to other objects and text. In this case the following gold crown will be created and the styles associated with it saved.



Starting a New Document

- 1 Load Photoshop, display the FILE menu and select NEW.

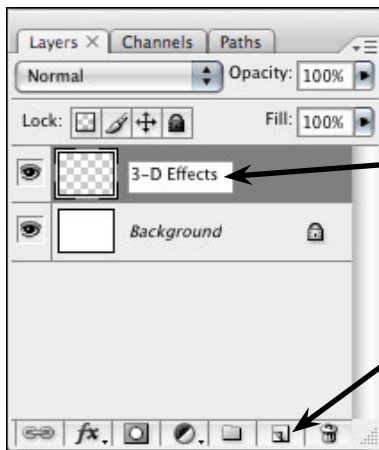


2 Set the NAME of the document to 3-D STYLE, the WIDTH to 800 pixels, the HEIGHT to 600 pixels and the BACKGROUND COLOUR to WHITE.

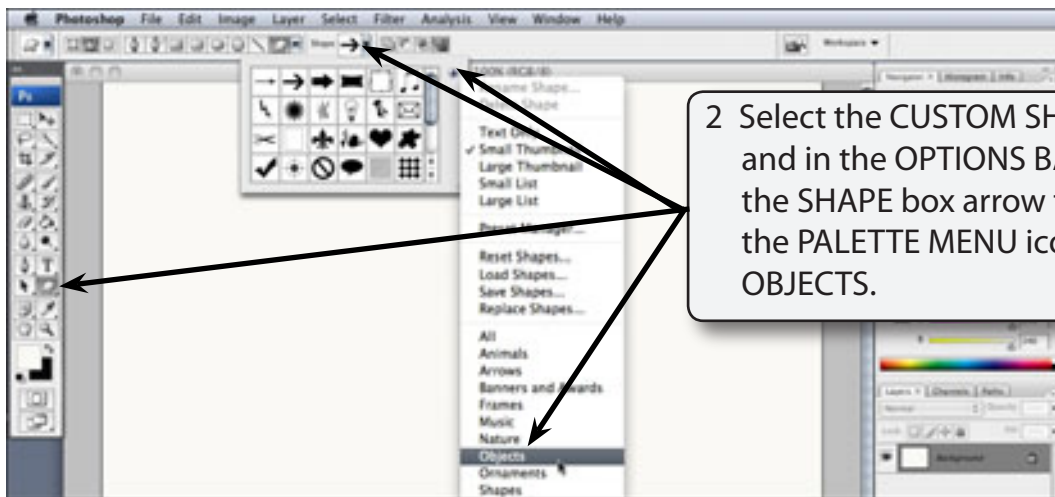
- 3 Select OK to start the document.

Drawing the Custom Shape

One of Photoshop's custom shapes will be used for the object, although you can use the FREEFORM PEN TOOL to create your own shape. It is best to use a shape with a few curves or circles so that you can more easily view the 3-D sections.



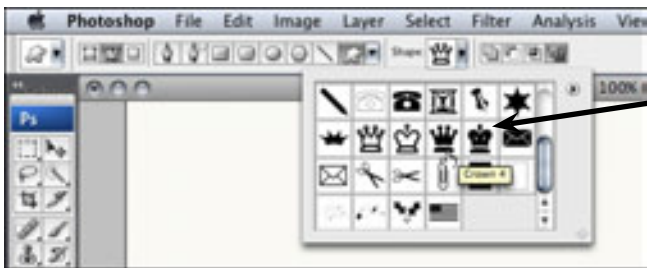
1 Create a NEW LAYER and call it:
3-D Effects



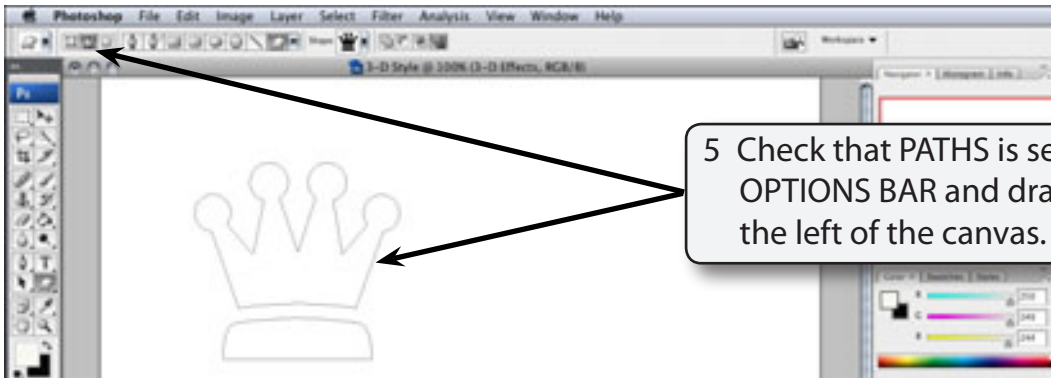
2 Select the CUSTOM SHAPES TOOL and in the OPTIONS BAR click on the SHAPE box arrow followed by the PALETTE MENU icon and select OBJECTS.



3 Select OK to replace the current shapes with the OBJECTS shapes.



4 Select the CROWN 4 shapes from the OBJECTS shapes.

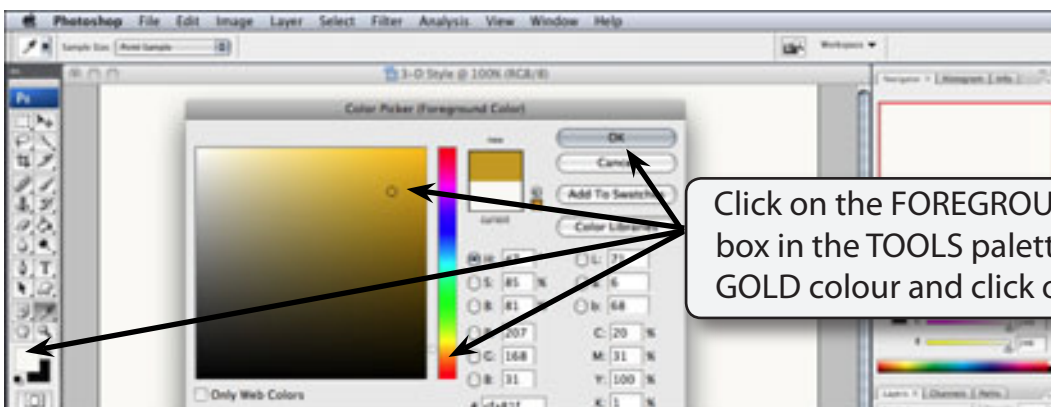


5 Check that PATHS is selected in the OPTIONS BAR and drag a crown at the left of the canvas.

NOTE: Paths needs to be selected in the OPTIONS BAR because just the outline of the shape is required, not a filled shape.

Selecting the Colour

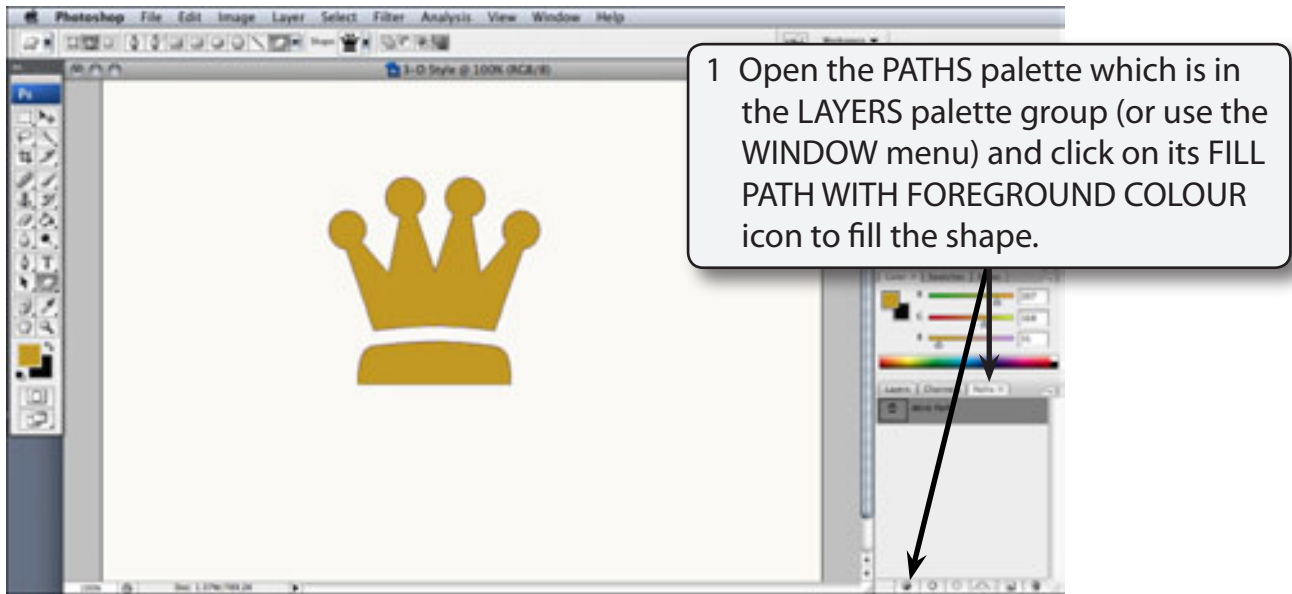
In this case a gold shade will be used to fill the crown then variations of the gold will be used to produce the three-dimensional effect.



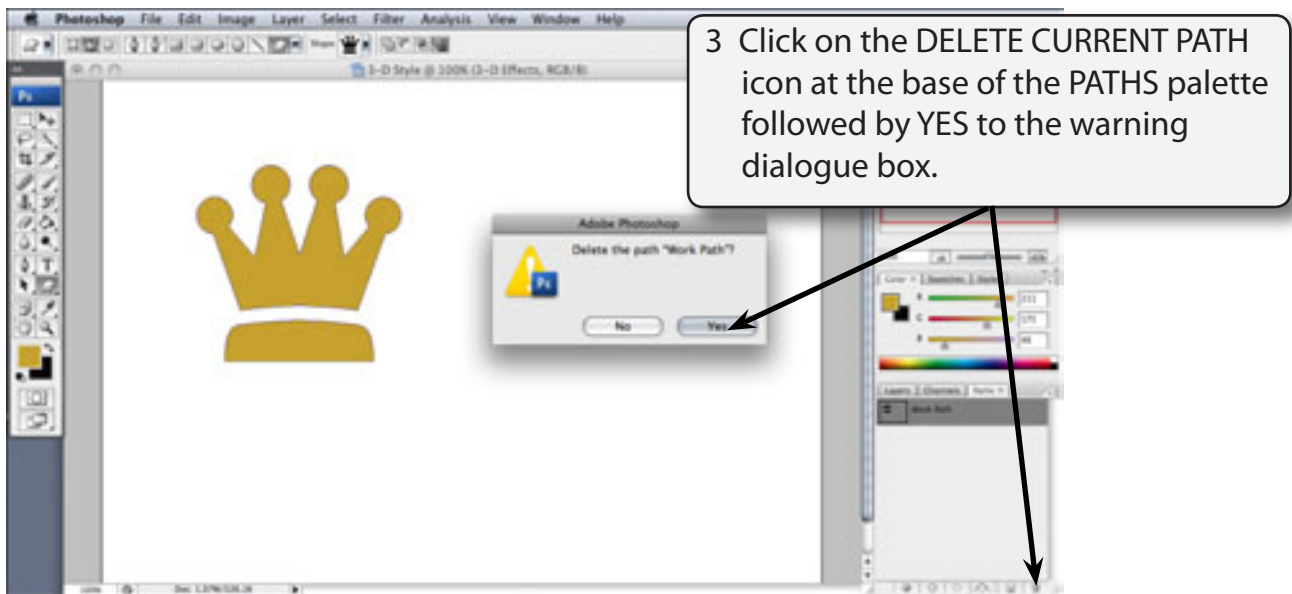
Click on the FOREGROUND COLOUR box in the TOOLS palette, select a GOLD colour and click on OK.

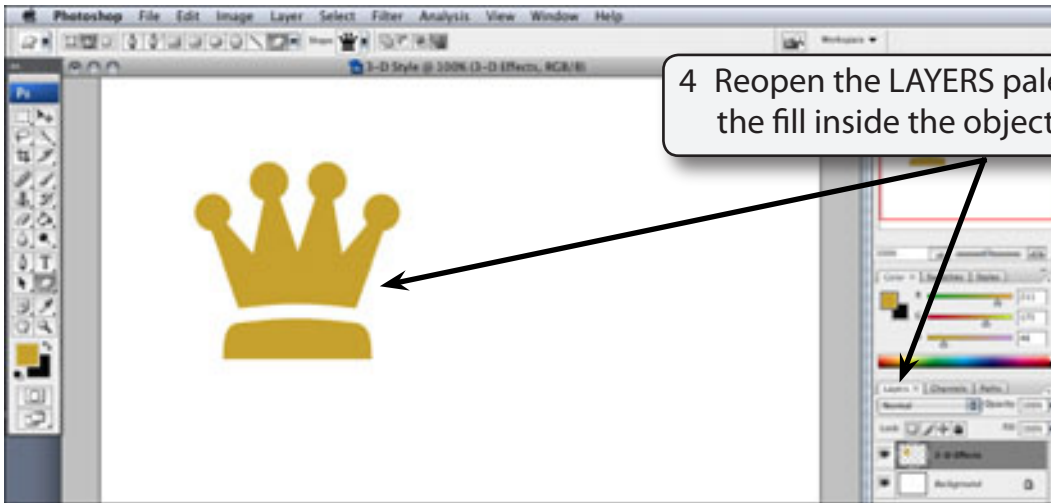
Filling the Object

A solid object needs to be produced so that there is no black outline included in the shape. To achieve this, just the path of the object can be selected, the path filled then the path deleted, leaving just the filled object.



2 The path can now be deleted so that the shape is just a solid object.

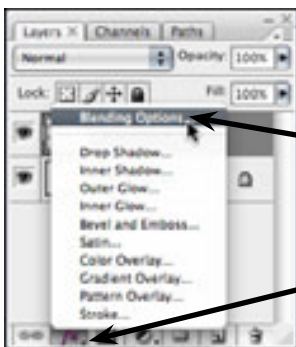




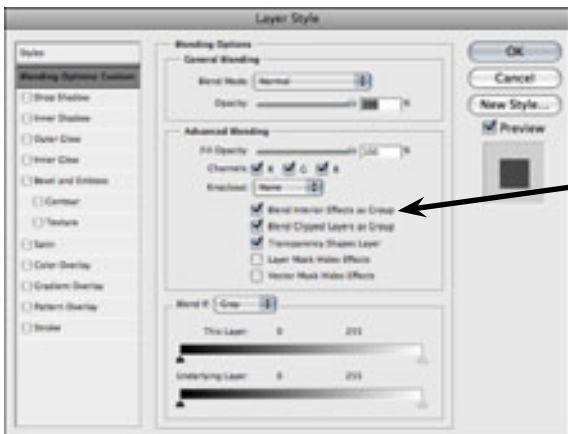
Creating the 3-D Effects

To create the 3-D effects the BLENDING OPTIONS are adjusted until the required effect is obtained, then the effects are saved as a style.

A Opening the Blending Options



1 Click on the ADD A LAYER STYLE icon at the base of the LAYERS palette and select BLENDING OPTIONS.



2 In the BLENDING OPTIONS DEFAULT section turn on the BLEND INTERIOR EFFECTS AS GROUP option so that the effects will be combined.