

# Text Formatting

PowerPoint offers an extensive array of text formatting tools that are very similar to those found in Microsoft Word. In this chapter you will look at ways to improve the appearance of text in your presentations. It will include adding sub-points, changing bullets, line spacing and spell checking tools.

## Loading the Presentation

- 1 If you are starting a new session, load Microsoft PowerPoint and click on the OPEN icon in the START screen.
- 2 If you are continuing from the last chapter, close the current presentation then display the FILE menu and select OPEN.
- 3 Browse to your STORAGE folder and open the WATTLE VALLEY AP file.

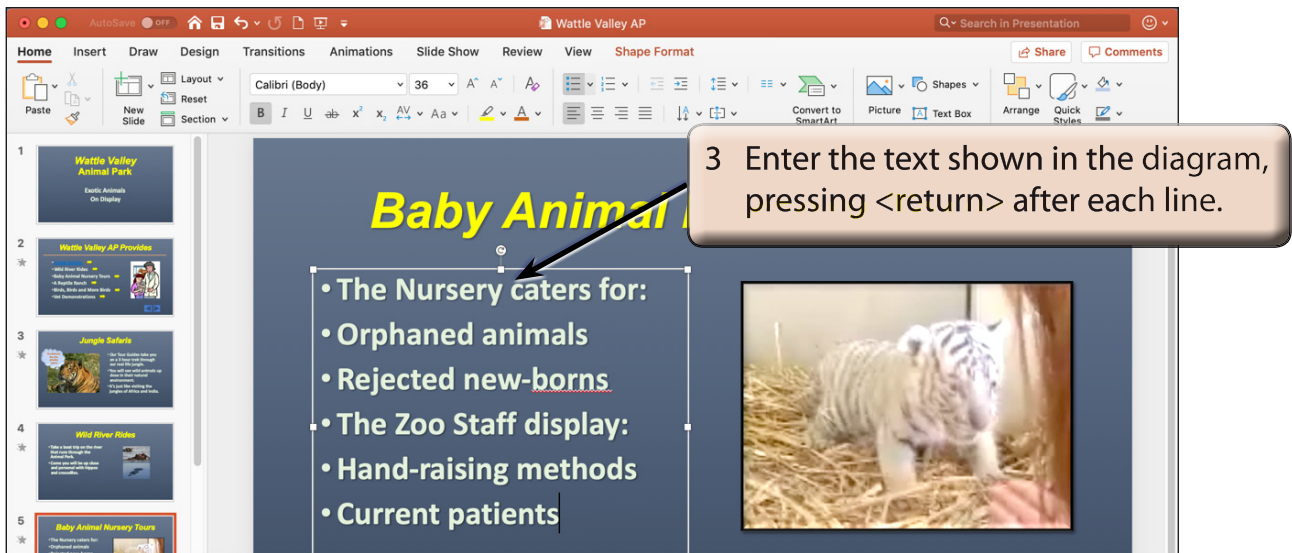
## Creating Sub-Points

So far you have entered single bullets. When you have a paragraph of text as a point it is usually better for the viewer of your presentation to have that paragraph split into sub-points with bullets highlighting those sub-points. To illustrate this let's change the text in the BABY ANIMAL NURSERY TOURS slide to have sub-points.

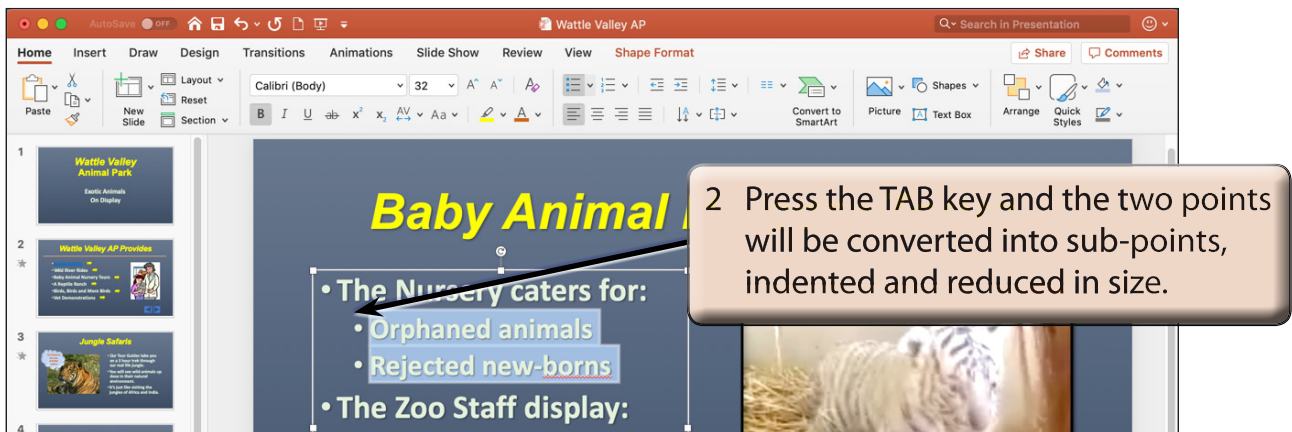
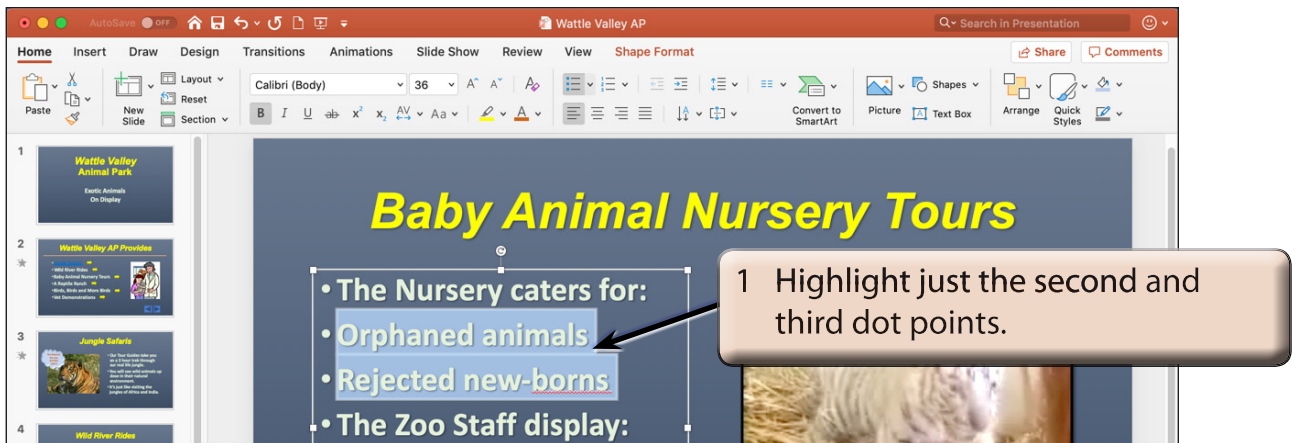
### A Entering the Text

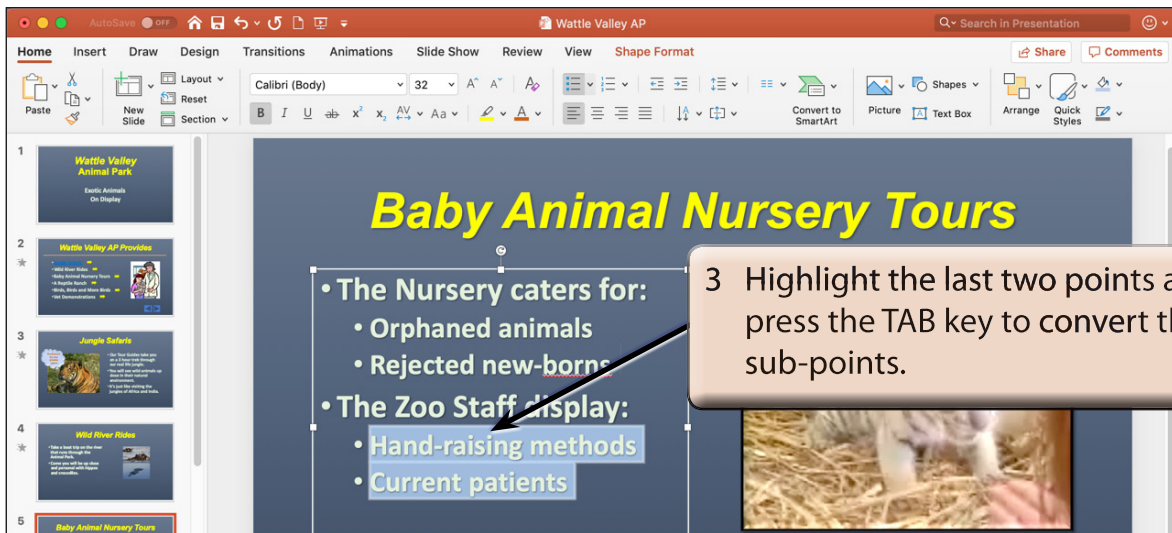
1 Set the screen to the BABY ANIMAL NURSERY TOURS slide (SLIDE 5).

2 Highlight all the text in the left placeholder.



## B Setting the Sub-Points

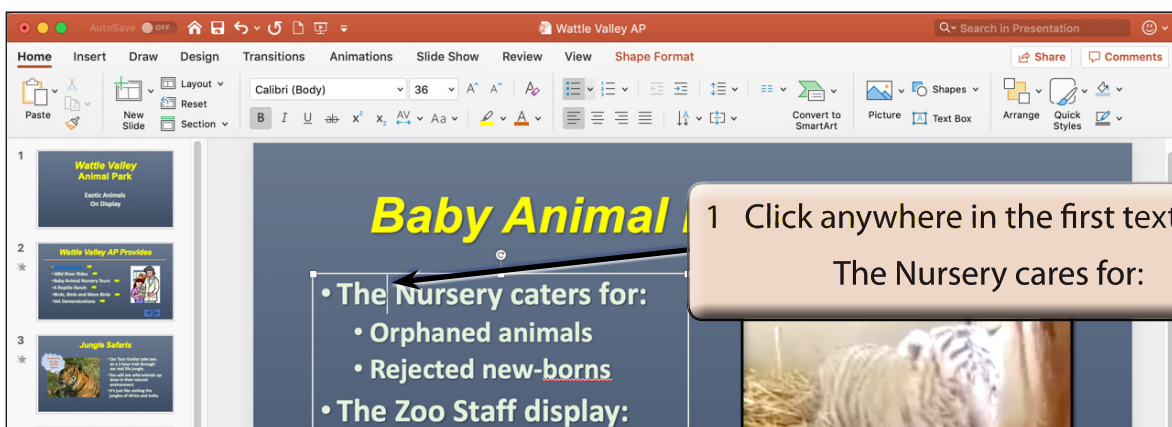


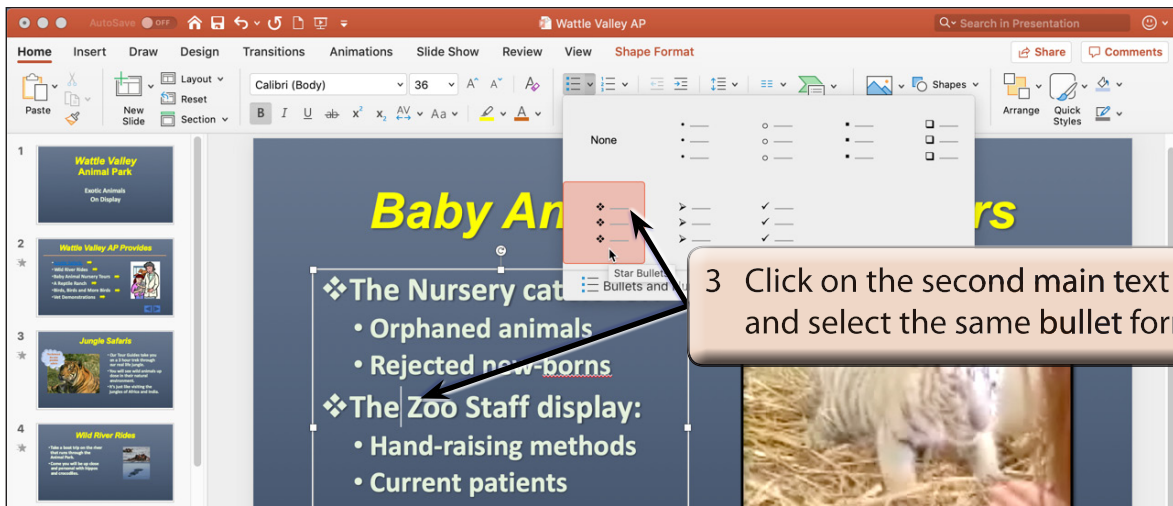
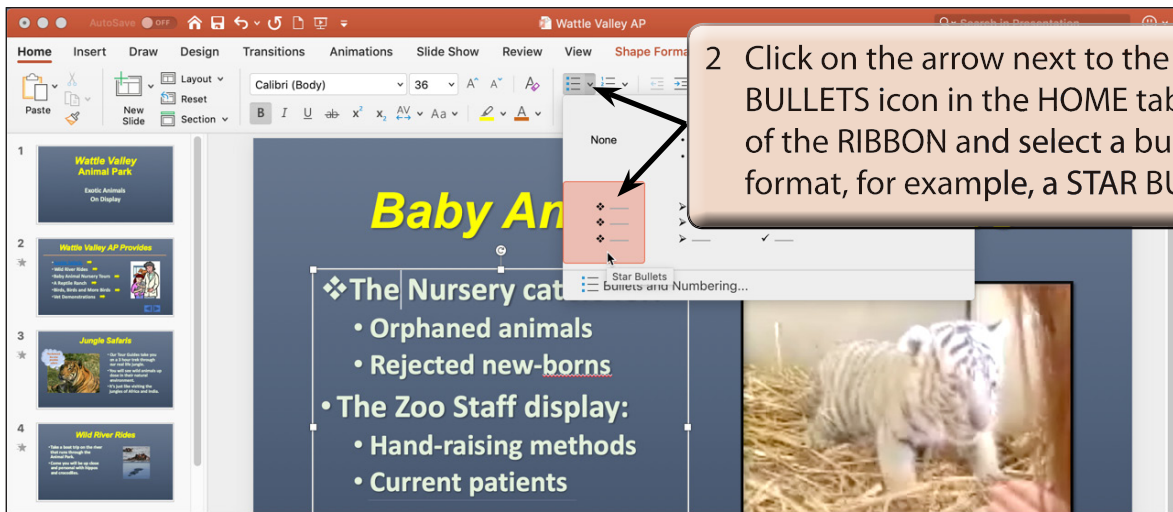


- NOTE:**
- i Pressing the TAB key again would set the points to a third level sub-point.
  - ii Sub-points can be returned to normal points by highlighting them and pressing SHIFT+TAB.

## Bullet Formats

By default, bullets are set to solid dots. You can change this.





**NOTE:** Once you have set a bullet format you can press **COMMAND+Y** as a shortcut to repeat the previous step.